

LIBRARY  
OF THE  
UNIVERSITY  
OF ILLINOIS

595.76

H77C

v.1

JAN 25 1950


NATURAL HISTORY BIOLOGY 1950

Return this book on or before the  
**Latest Date** stamped below.

University of Illinois Library

MAY 21 1962		
-------------	--	--

L161—H41



Digitized by the Internet Archive  
in 2011 with funding from  
University of Illinois Urbana-Champaign





THE LIBRARY  
OF THE  
UNIVERSITY OF ILLINOIS



GOLLATHUS PRINCEPS, Hope.

(Water and Oil)

Swamee.



THE

*Edward Newman*  
*Presented by the author*

COLEOPTERIST'S MANUAL,

CONTAINING THE

LAMELLICORN INSECTS

OF

LINNEUS AND FABRICIUS.

---

BY THE

REV. F. W. HOPE, F.R.S. F.L.S. F.Z.S.

ETC. ETC.

---

LONDON :

HENRY G. BOHN, YORK STREET, COVENT GARDEN.

MDCCCXXXVII.



H 77 c  
v. 1

Net 1/1

TO

THE REV. WILLIAM KIRBY, M.A.

Honorary President

OF THE

ENTOMOLOGICAL SOCIETY,

F.R.S. F.L.S. F.G.S. ETC.

---

MY DEAR SIR,

IN an humble attempt to facilitate the acquirement of a knowledge of that interesting and important science which your philosophical and practical researches have so much tended to illustrate and dignify, not less to the glory of God, than to the benefit of man; I assure myself I shall at least secure your sympathy in my efforts, whatever opinion you may entertain of their possible success.

Trusting that many years may yet be vouchsafed to you, in further prolongation of so long and useful a life,

Believe me to be,

Your's, very sincerely,

F. W. HOPE.

Entomology 23 Nov 31 Herman #315

759295

*Shortly will be published,*

THE  
FIRST FASCICULUS OF THE COLEOPTEROUS  
FAUNA OF NEW HOLLAND.

BY THE  
REV. F. W. HOPE, F.R.S. F.L.S. F.Z.S. &c. &c.

## P R E F A C E.

---

THE origin of this attempt at a Classification of the Lamellicorns, may probably be traced to my interleaved copies of the *Systema Naturæ* of Linneus, and the *Systema Eleutheratorum* of Fabricius, in which for some years past I have been in the habit of noting down any remarks which occurred to me, while grouping and arranging my collection. The suggestion of a friend, accompanied by a letter urging the request, induces me to give to the Public the results of these observations, and I trust that, however imperfect or even faulty this Manual may appear, it yet may be the means of enabling the Student to name the Linnean and Fabrician species of his collection with more facility and accuracy than can be derived from any Entomological work hitherto published. Entomology in Europe at the present day is making rapid progress, and it must be a source of regret to the real lover of science,

that few of the Elementary books already published are sufficiently simple and satisfactory; perhaps the best that has appeared is the *Entomologia Edinensis*, published by that elegant writer, James Wilson, of Edinburgh; throughout the work pedantry is avoided, while orismology is attended to, and what is of more consequence, the philosophy of science is steadily kept in view. It is, however, but a local Fauna, and therefore cannot be of general utility. The glowing pages of a Kirby and a Spence have no doubt induced many individuals to prosecute with ardour the study of Insects.—Alas! like the grammar of a language, the elements of science (particularly that of Entomology) have presented at the outset not only a stumbling block, but a very formidable barrier, nearly insuperable to human assiduity. To clear away these impediments, to render the tyro's first attempts at systematic Entomology more engaging than at present, is one object of the present Manual; a second is, that the writings of Linneus and Fabricius may no longer be as a sealed book or dead letter; a third is, to exhibit the state of Entomological science at the present day, and thereby enable others to direct attention to those points which have been most neglected. Let us enquire how it happens that the writings of the

above authors are nearly useless to the tyro in Entomology. The student having lately acquired the rudiments of science, naturally applies to the *Systema Naturæ* of Linneus for further information. He is surprised at the extreme brevity of the generic characters, and can depend little on the sections or sub-divisions of the genera described generally in a few words. He next has recourse to the *Entomologica Systematica* of Fabricius, where he is at once overwhelmed by the barbarous terms of the latter writer, and sighs for the classic elegance of the former. After much study and loss of time both are abandoned in despair, and if he still continues a desire to prosecute the study of Insects, he is compelled to seek information in the more voluminous writers of Sweden, Germany, and France. Should the student be a Linguist all is well; if not, further pursuit is altogether hopeless; consequently, the study of some of the most beautiful and varied forms of the Creation becomes abandoned, and the science of Entomology is deprived of the assistance of many who might have contributed to its renown. With the scientific the united works of Linneus and Fabricius must ever be considered as essential to the study of Entomology, and I know of no better means of rendering their labours acceptable to the young

beginner than by examining in detail the various Orders, Families, Genera and Species into which different authors have sub-divided the class Insecta. I commence this Manual with the Order of the Coleoptera, placing in a tabular arrangement the Lamellicorns described by Linneus. The first column will give the Linnean species—the second the country they inhabit, which in the *Systema Naturæ* is exceedingly faulty, as the Geographical distribution of Insects in those days was little attended to—the third column will contain an arrangement of the species under the several genera which modern Entomologists have adopted. Next to the Linnean Lamellicorns, will appear a tabular arrangement of those of Fabricius, divided into four columns. The first containing his genera, the second his recorded species, the third the countries they inhabit (often as faulty as the former), and the last will present a generic arrangement of authors similar to the preceding, and exhibiting as far as possible the state of modern science. It may be necessary here to give my reasons why I have in several cases changed the generic names, such as are in common use on the Continent. My friend, Mr. William Sharpe MacLeay, has very properly restricted the name *Scarabæus* to the genus of Beetles denomi-



nated *Ateuchus* by Illiger, some of the species being esteemed sacred by the antients. The celebrated Latreille unfortunately applies the same term *Scarabæus* to those insects allied to *Dynastes Hercules*, M. L.; and here I cannot help stating, I consider it rather remarkable, that these giants of the New World should receive from the Prince of Entomologists an appellation derived from the Old World, when the typical Lamellicorns of the Western hemisphere differ materially in form and appearance from any species yet discovered in the Eastern.

Merely mentioning this, which may be regarded as a slight inadvertency, I pass onwards to the examination of other generic names in use among authors. Fabricius, it appears, has applied the term *Geotrupes* to what Latreille has denominated *Scarabæus*. Now as both authors, according to my views, are in error, particularly the former, the derivation of the word *Geotrupes*, or Earth-borer, being given to a group of Tree-borers, I suggest the adoption of a new one, which will better express the habits of the Latreillean *Scarabæus*, namely *Xylotrupes*, or Wood-borer, from *Ξυλον* lignum, and *τρυπαω* perforo—this simple alteration will not be thought, I trust, inapplicable. Among the remaining genera few will be changed, and nowhere will any alteration be attempted where

the name is significant, or has not already been used by a prior writer. I have always been averse to changing generic names, as it creates confusion. Synonymy is at all times a perplexing study, and the enormous increase of new terms tends greatly to impede the progress of science. I am aware that there are Naturalists who revel with delight while disentangling Synonyms. I give them great credit for perseverance, and can fully appreciate their labours; but let me ask what is the reward of many anxious hours passed in endeavouring to clear up a difficulty? anything indeed but what is satisfactory. The soundest views and opinions are often disputed, mistaken, or misrepresented. A paper war ensues to the utter detriment of science; and to amity, too often succeeds the unrelenting hatred of the conflicting parties. It may here be asked, perhaps, why I have not given the various Synonyms of the species alluded to in Linneus and Fabricius; my answer is, because it has already been admirably executed by the illustrious Schönherr, whose work is, or ought to be, in the hand of every person who calls himself an Entomologist. Next to the tabular arrangement above mentioned, the present Manual will contain the character of several new unpublished genera, illustrated by outline drawings, the

major part of them described and originally rudely sketched with a pen by Mr. Kirby's own hand. Mr. Westwood has carefully inspected the outlines, and with some few necessary additions they are now submitted to the public. Here I cannot resist expressing the pleasure I feel in acknowledging Mr. Kirby's extreme liberality in offering to me the use of his manuscripts and sketches relating to the Lamellicorns of his collection, a group which doubtless he esteemed not only as one of the most numerous in genera and species among the families of Insects, but also, I imagine, of first rate importance, whether we regard the havoc they occasion in reducing to mere powder the mightiest monarchs of the forest, as well as in checking the over luxuriance of tropical vegetation, or whether we contemplate the fertility occasioned by the burrowing of the Copridæ in the earth, which drill the soil for depositing their ova, and carry with them to the roots of vegetation the richest of manures.

Mr. Kirby appears, from the manuscripts before me, to have bestowed much time and attention on the Scarabæidæ. He is too well known as a writer of eminence to require anything like praise from any individual for his profound entomological views. Considering it a great gain to science if his manu-

scripts could be published, I solicited his consent ; and feel happy in being enabled to mingle his materials with mine. The remaining part of this Brochure will contain some observations on the Linnean and Fabrician genera cited in the above Tables, and occasional remarks relating to the more remarkable species. The Writer will not presume to say that many faults and inaccuracies will not be discovered ; particularly as he has been obliged to depend sometimes merely on a concise Latin description taken from the above quoted authors. Any Entomologist indifferently acquainted with their writings, has reason to regret the brevity of their descriptions ; which in some cases will apply to many species of a genus. There is a chance, however, of rectifying in future any material mistakes which may appear ; an extensive correspondence with the leading Scavans of Europe will enable him to correct his errors. Having visited many of the Continental collections, he can speak decidedly on most of the Fabrician species ; where he is in doubt, he hopes that satisfactory information will yet be gleaned from the authentic cabinets of Copenhagen and Kiel ; and at a future time he will have no objection to reprint the present publication should it be thought necessary.

In concluding these observations the Writer adds his opinion, that in case the present attempt be successful in rendering the Linnean and Fabrician writings better known and more practically useful, an important end will be gained. Should those individuals who are capable of forming an opinion of the want of such a work sanction it with their approbation, and think it worthy even of the term of Manual, or indeed in any way useful to the Student, the author's chief object will be realised, namely, the furtherance of science. And if such should eventually prove the result, hereafter he may be induced to illustrate the remaining pages of Linneus and Fabricius which are devoted by them to the Coleoptera, and probably also the remaining orders of insects.

F. W. H.





# THE LAMELLICORN BEETLES,

DESCRIBED BY LINNEUS.

## GENUS. SCARABÆUS of LINNEUS.

PETALOCERA of *MacLeay*.

LAMELLICORNS of *Latreille*.

<i>Linnean Species.</i>	<i>Country.</i>	<i>Arrangement of Authors.</i>
1. Hercules	S. America	Dynastes, <i>Mac Leay</i> .
2. Gideon	E. Indies	Xylotrupes, <i>Hope</i> .
3. Actæon	S. America	Megasoma, <i>Kirby</i> .
4. Simson	S. America	Megasoma, <i>Kirby</i> .
5. Tityus	N. America	Dynastes, <i>Mac Leay</i> .
6. Atlas	E. Indies	Chalcosoma, <i>Hope</i> .
7. Alcæus	N. and S. America	Strategus, <i>Kirby</i> .
8. Molossus	China	Catharsius, <i>Hope</i> .
9. Typhæus	Europe	Typhæus, <i>Leach</i> .
10. Lunaris	England	Copris, <i>Fabricius</i> .
11. Cylindricus	England	Sinodendron, <i>Fabricius</i> .
12. Bilobus	S. America	Xylotrupes, <i>Hope</i> ?
13. Lancifer	S. America	Phanæus, <i>Mac Leay</i> .
14. Rhinoceros	Asia	Oryctes, <i>Illiger</i> .
15. Nasicornis	Europe	Oryctes, <i>Illiger</i> .
76. Carolinus	N. America	Copris, <i>Fabricius</i> .
17. Mimas	S. America	Phanæus, <i>Mac Leay</i> .
18. Sacer	Europe and Africa	Scarabæus, <i>Mac Leay</i> .
19. Didymus	S. America	Phileurus, <i>Latreille</i> .
20. Valgus	N. America	Phileurus, <i>Latreille</i> .
21. Hispanus	Spain	Copris, <i>Fabricius</i> .
22. Carnifex	N. America	Phanæus, <i>Mac Leay</i> .
23. Granarius	Europe	Aphodius, <i>Fabricius</i> .
24. Nuchicornis	England	Onthophagus, <i>Latreille</i> .
25. Vacca	England	Onthophagus, <i>Latreille</i> .
26. Taurus	Europe	Onthophagus, <i>Latreille</i> .
27. Bison	Italy	Bubas, <i>Megerle</i> .
28. Subterraneus	England	Aphodius, <i>Fabricius</i> .
29. Erraticus	Europe	
30. Maurus	Mauritania	Glaphyrus, <i>Latreille</i> .
31. Fossor	England	Aphodius, <i>Fabricius</i> .
32. Fimetarius	Scotland	

<i>Linnean Species.</i>	<i>Country.</i>	<i>Arrangement of Authors.</i>
33. Hæmorrhoidales	Germany	Aphodius, <i>Fabricius.</i>
34. Conspurecatus	France	-----
35. Marianus	Carolina	Dynastes ♀, <i>Mac Leay.</i>
36. Gigas	Egypt	Helicocpris, <i>Hope.</i>
37. Scaber	N. America	Dynastes, <i>Mac Leay.</i>
38. Laticollis	S. Europe	Scarabæus, <i>Mac Leay.</i>
39. Longimanus	Asia	Eucheirus, <i>Kirby.</i>
40. Pilularius	Europe	Gymnopleurus, <i>Illiger.</i>
41. Schæfferi	Germany	Sisyphus, <i>Latreille.</i>
42. Stercorarius	England	Geotrupes, <i>Latreille,</i>
43. Vernalis	Austria	-----
44. Calcaratus	Egypt	Dichelus? <i>Serville.</i>
45. Schreberi	Germany	Onthophagus, <i>Latreille.</i>
46. Ovatus	England	-----
47. Amazonus	Surinam	Cyclocephala, <i>Latreille.</i>
48. Sabulosus	Europe	Trox, <i>Fabricius.</i>
49. Chrysis	S. America	Macraspis, <i>Mac Leay.</i>
50. Surinamus	Surinam	Rutela, <i>Latreille.</i>
51. Nitidus	Carolina	Gymnetis, <i>Mac Leay.</i>
52. Festivus	N. America	Phanæus, <i>Mac Leay.</i>
53. Lineola	S. America	Rutela, <i>Latreille.</i>
54. Sticticus	Barbary	Cetonia, <i>Fabricius.</i>
55. Sepicola	E. Indies?	Anisoplia ?
56. Syriacus	E. Indies	Anisoplia ?
57. Fullo	England	Melolontha, <i>Fabricius.</i>
58. Agricola	France	Anisoplia, <i>Megerle.</i>
59. Horticola	England	-----
60. Melolontha	France	Melolontha, <i>F. sp. vulgaris.</i>
61. Solstitialis	England	Zantheunnia, <i>Leach.</i>
62. Occidentalis	Carolina	Rhisotrogus, <i>Latreille.</i>
63. Hemipterus	France	Valgus <i>Scriba.</i>
64. Farinosus	Europe	Hoplia, <i>Illiger.</i>
65. Aulicus	Africa	Hoplia ?
66. Longipes	P. B. S.	Monocheilus? <i>Illiger.</i>
67. Lanigerus	N. America	Areoda, <i>Leach.</i>
68. Squalidus	Germany	Cetonia, <i>Fabricius.</i>
69. Hirtellus	France	-----
70. Fasciatus	England	Trichius, <i>Fabricius.</i>
71. Indus	N. America	Cetonia, <i>Fabricius.</i>
72. Brunnus	Europe	Serica, <i>Mac Leay, sp. brunnea</i>
73. Capensis	P. B. S.	Cetonia, <i>Fabricius.</i>
74. Eremita	Europe	Osmoderma, <i>Encyclopedie.</i>



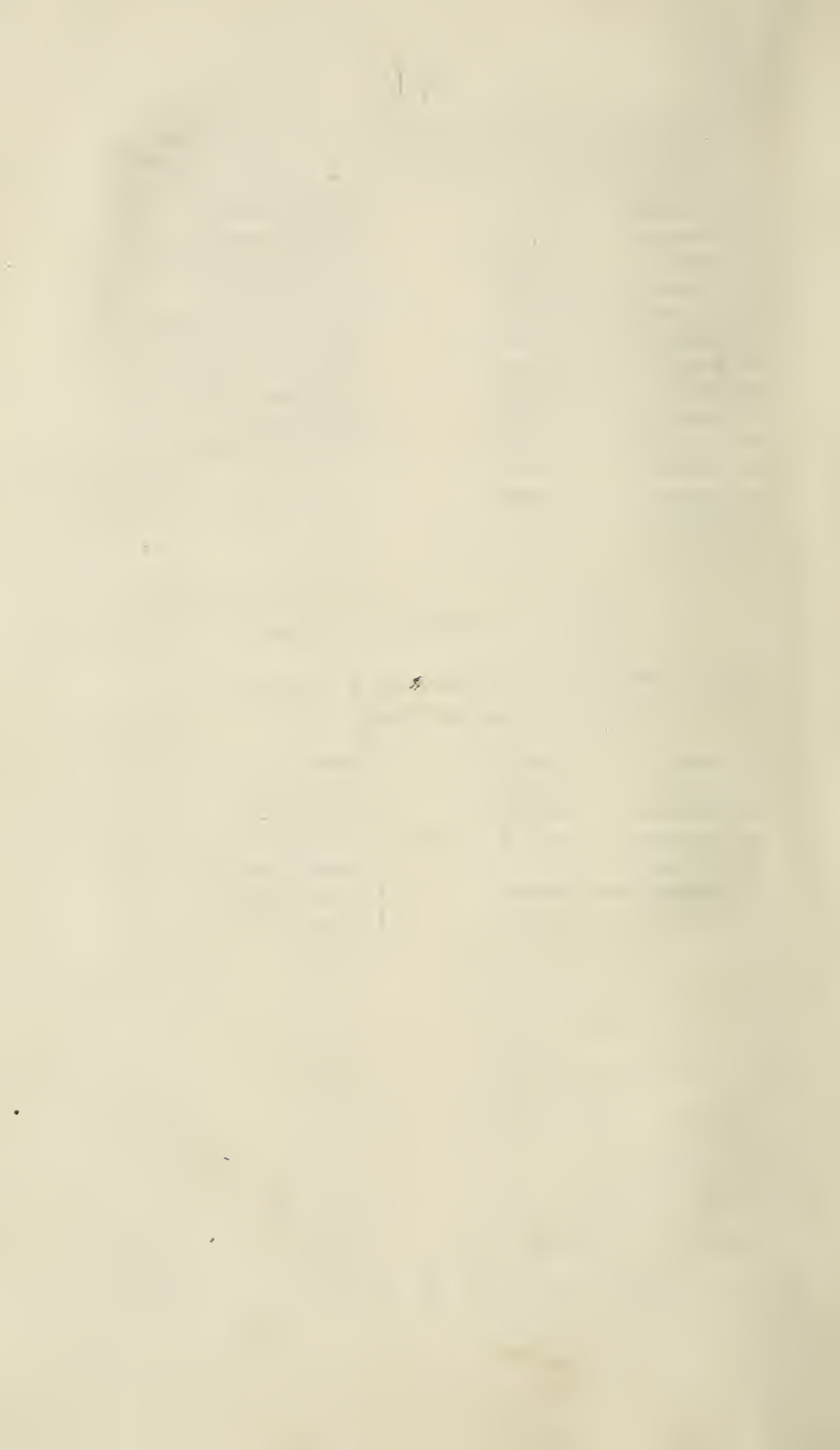
<i>Linnean Species.</i>	<i>Country.</i>	<i>Arrangement of Authors.</i>
75. Fascicularis	P. B. S.	Cetonia, <i>Fabricius.</i>
76. Punctatus	Carolina	Pelidnota, <i>Mac Leay.</i>
77. Lanius	N. America	Gymnetis, <i>Mac Leay.</i>
78. Auratus	Europe	Cetonia, <i>Fabricius.</i>
79. Variabilis	England	Gnorimus, <i>Encyclopedie.</i>
80. Cæruginosa	S. America	Pelidnota, <i>Mac Leay.</i>
81. Nobilis	England	Gnorimus, <i>Serville.</i>
82. Æneus	Unknown	Serica, <i>Mac Leay?</i>
83. Quisquilius	England	Cereyon, <i>Leach.</i>
84. 4-maculatus	England	Aphodius, <i>Fabricius.</i>
85. Plagiatus	Upsal	—————
86. Rufipes	England	—————
87. Ceratoniæ	Egypt	Genus doubtful.

GENUS. LUCANUS OF LINNEUS.

THALEROPHAGOUS RECTOCERA of *Mac Leay.*

LAMELLICORNS of *Latreille.*

1. Cervus	Europe	Lucanus, <i>Linneus.</i>
2. Capreolus	N. America	—————
3. Tridentatus	Ælandia	—————
4. Interruptus	N. & S. America	Passalus, <i>Fabricius.</i>
5. Carinatus	Indies	Lucanus, <i>Linneus.</i>
6. Parallelipipedus	England	Dorcus, <i>Megerle.</i>
7. Caraboides	Europe	Platycerus, <i>Latreille.</i>



REMARKS AND ANNOTATIONS  
 ON THE  
 LINNEAN LAMELLICORNS.

---

SPECIES 1. *Scarabæus Hercules*, (Linn.)—This is the type of the genus *Dynastes*, MacLeay; associated with it are the following species: viz. Alcides, Perseus, and Tityus of Fabricius, and Neptunus of Schönherr. By some writers Alcides and Perseus are considered only as varieties of Hercules. Sc. Marianus, Linn. is only the female of Tityus. Sc. Glaucus, Jablonsky, is also a synonym of Sc. Marianus. The generic characters of *Dynastes*, MacLeay, are given at length in the 14th volume of the Linnean Transactions by Mr. Kirby, *vide* part 3, p. 567.

SP. 2. *Gideon*. — Now a *Xylotrupes*. In the Preface the reader will find my reasons stated for substituting the above term for *Geotrupes* of Fabricius. This latter name is applied in England and France at the present day to those species of Lamellicorns which are allied to *Sc. Stercorarius*, Linn.

With respect to Gideon, and the following species denominated Oromedon, it is probable they are but varieties of the same insect. In my cabinet are various intermediate specimens connecting them.

SP. 3. *Actæon*.—To the genus *Megasoma* K. also belong *G. Simson*, *Elephas*, *Typhon* of Fabricius, and also *Scarabæus Hector* of Gory, lately published in the *Annals of the Entomological Society of France*. The details of the genus *Megasoma* Kirby, will be found in the 14th volume of the *Linnean Transactions*, part 3, p. 566.

SP. 6. *Atlas*.—Of the genus *Chalcosoma* Hope. By a communication received from my friend De Haan of Leyden, I am informed that *S. Chiron*, Oliv. is considered as the female of *Atlas*. If such is the case, both sexes have the thorax cornuted. The species which I described under the names of *Dynastes Hardwickii*, *Childrenii* & *Kirbii*, form then a subgenus, as the females have the thorax smooth and rounded. To the genus *Chalcosoma* belong *G. Caucasus*, Fab., *Dyn. Hesperus*, Erichson, and I have little doubt that there are in the English and Continental collections three if not four undescribed species.

SP. 8. *Molossus*.—I am here inclined to form a new genus, comprehending those *Copridæ* which are

allied to *Copris Molossus*, Fab. The following short characters may probably be deemed sufficient, as the type is well known. “Clypeus integer, seu submarginatus, cornutus, thorace retuso dentato punctatissimo, fovea laterali magna lævi nec punctata, elytrisque minutissime rugulosis.” I suggest the adoption of the term *Catharsius*, *καθαρισιος*, “purgandi vim habens,” or purifier, for this subgenus, which well expresses the benefit derived from these scavengers of warm and tropical regions. To it belong *Copris Ursus* of Fabricius, *Achates* of Olivier, *Sagax* of Schönherr and *Cop. Olivieri*, and *Asrael* of Kirby.

SP. 9. *Typhæus*.—Dr. Leach in the Edinburgh Encyclopædia (1812) gave to this section of *Copridæ* the term *Typhæus* as a generic name, and to the species the name of *Vulgaris*. Dr. Fischer more recently published it under the name of *Ceratophyus*. *G. dispar* and *Momus* of Fabricius, as well as *Monoceros* of Dahl, *inermis* of Marsham, and *subarmatus* of De Jean, belong to this genus. The latter species is probably only a variety of *inermis*.

SP. 12. *Bilobus*.—In the Continental cabinets two species closely allied to *Bilobus* are not unfrequently met with.

SP. 17. *Mimas*.—This splendid insect belongs to Mr. W. Sharpe MacLeay's genus *Phanæus*. In the *Horæ Entomologicae* will be found about twenty species described, several of them are apparently unknown to the French writers, as the Baron De Jean only mentions two species to which Mr. MacLeay's names are attached.

SP. 18. *Sacer*.—Now the type of Mr. MacLeay's genus *Scarabæus*, and subgenus *Heliocantharus*. It is singular that the same remark which has been made respecting the species of *Phanæus* may also be applied to those of *Scarabæus*, two of Mr. MacLeay's names only being cited, and these being sunk down into synonyms. Whence arises this omission? purposely or not? does it proceed from a national jealousy? I trust not. Does it arise from a want of individual exertion and industry? if so, it is to be hoped that some Entomologist will yet arise and undertake an interesting monograph, embodying in it Mr. MacLeay's observations, and inform the Continent what has been done since that writer quitted England, now a period of nine years.

SP. 24. *Nuchicornis*.—Now of the genus *Onthophagus*, which requires however to be divided into several subgenera. I am acquainted with more than three hundred species, the major part of



which are in my possession. The species received from New Holland appear to differ from any of those which inhabit the New or Old World. The reason I do not here attempt a new arrangement is, that the forms are varied, and require a very careful and minute investigation.

SP. 35. *Marianus*.—This is only the female of *Dynastes Tityus*; the former name must therefore be considered only as a synonym.

SP. 36. *Gigas*.—Now an *Heliocopris*. This gigantic insect is closely allied to *Copris Isidis* of Savigny, and may justly be ranked among those beetles which antiquity esteemed as sacred. It frequently occurs engraved on the obelisks of Egypt, and on the tombs of the kings, and is met with in collections sculptured of various sizes. As it very commonly occurs engraved at the temples of Osiris or the Sun, I suggest the adoption of the term *Heliocopris* to include all those species of *Copris* allied to *C. Gigas*, Linn. The following insects range with it: viz. *C. Midas*, *Bucephalus*, *Antenor*, *Isidis*; and to these may be added from my own collection those which are mentioned in Mr. Pettigrew's work on Egyptian Antiquities, namely, *C. Osiris*, *Apis*, *Memnon*, *Sesostris*, *Mœris*,

and Shishack, and to these may probably be attached also *C. Tmolus* of Fischer.

SP. 37. *Scaber*.—On reference to the insects of the Museum of Queen Ulrica of Sweden, described by Linneus, this species would by Entomologists generally be ranked as an *Oryctes*. The *Synonymia Insectorum* of Schönherr gives it as the female of *Dynastes Hercules*.

SP. 39. *Longimanus*.—Messrs. Kirby and Spence, in their invaluable Introduction to Entomology, some years back, gave the name of *Eucheirus* as a generic appellation to the above insect. The Baron De Jean, in his last Catalogue, also applied the same term to a Brazilian Lamellicorn; the latter insect is a pigmy compared with the above species, and scarcely deserves the appellation. I retain, therefore, Mr. Kirby's name, particularly as no doubt could exist as to the species intended. In the *Entomological Magazine* a genus denominated *Propomacrus* by Mr. Newman has been published, which closely resembles *Eucheirus*, and of which the typical species (*Arbaces* Newm.) has been long figured by Pallas under the name of *Scarabæus bimucronatus*.

SP. 44. *Calcaratus*.—No ticketed specimen of the



above insect is visible at present in the Linnean cabinet. It is probable it might belong to the genus *Dichelus* of Serville, as there are some unlabelled specimens in the collection belonging to that genus.

SP. 47. *Amazonus*.—This insect appears to be only a variety of *Cyclocephala signata*, Fab. vid. Schon. Syn. Insect, p. 1. page 188, 122<sup>a</sup>.

SP. 55. *Sepicola*.—I conclude that this insect is an *Anisoplia*, merely from Linneus's short description, "habitus Sc. horticolæ sed triplo minor." It is not to be found in his cabinet.

SP. 56. *Syriacus*.—This species, like the former, is described from the Queen of Sweden's collection; it is probably an *Anisoplia*.

SP. 57. *Solstitialis*.—Dr. Leach some years back gave the name of *Zantheumia* to those species of *Melolonthidæ* allied to *M. Solstitialis*, Linn. *Rhisotrogus* of Latreille is the name now commonly adopted on the Continent; the name *Amphimalla* (still retained by Stephens) having been expunged by Latreille himself. (*Règne An.* 4. p. 561.)

SP. 66. *Longipes*.—In the account of the museum of the Queen of Sweden the description of this insect will be found (vide page 20). Tulbagh gives the Cape of Good Hope as its true locality.

In magnitude he describes this species as approaching that of *Sc. horticola*, now an *Anisoplia* of Megerle. From the detailed description it appears to be a *Monochelus*, or *Lepitrix*.

SP. 69. *Hirtellus*.—It seems probable that this species can only be considered as a variety of *Cetonia Squalida* of Fabricius.

SP. 72. *Brunnus*.—Probably a misprint for *Brunneus*. This is now the type of Mr. MacLeay's genus *Serica*. The specific name must be changed to *Brunnea* to accord with the generic one.

SP. 78. *Auratus*.—This insect I consider the type of *Cetonia* Fab. Perhaps no family of insects evinces the rapid growth of Entomology more than the *Cetoniadæ*. Messrs. Gory and Perchéron in their late Monograph mention more than four hundred species; more than seventy species, which have fallen under my inspection, are not noticed in it; Mr. W. Sharpe MacLeay is also acquainted at least with two hundred species which are not designated, making in the whole six hundred species; and it is not saying too much that the above amount is probably far short of what will yet be discovered.

SP. 82. *Æneus*.—I am at a loss to decide with what genus this Linnean insect is to be ranged; in size it approaches *Serica brunnea*, MacLeay; and

from the general description it appears that it may belong to it. There is no specimen of it remaining at present in the Linnean cabinet.

SP. 87. *Ceratonix*.—The reference in the *Systema Naturæ* of Linneus is to Hasselquist's *Iter Palæstinum*, 409, n. 99, where it is called a *Scarabæus*, and compared to a small *Coccinella*. Longitudo, lin.  $1\frac{1}{2}$ . On turning to the work entitled *Museum Ludovicæ Ulricæ Reginae*, published in 1764 by Linnè, the following remarks are made on this species: "Corporis habitus, magnitudo et structura *Dermestidis typographi*." It would therefore be rashness to decide to which genus this insect belongs at present.

In concluding my observations upon the Linnean Lamellicorns, it may here be noted that whenever the collection of Queen Ulrica is mentioned and referred to in the *Systema Naturæ*, there is seldom any specimen of those species preserved in the Linnean cabinet. At different times various insects have been presented to the Linnean cabinet by various individuals, yet, as a collection, it is not extensive and not arranged as it ought to be; and it is solely with a view to the increase of the Linnean Society's collection that I now state that it will, in all probability, receive considerable additions

by the liberality of its members, if its arrangement be undertaken, being aware of several persons who are willing to contribute to it, and most gladly would I give a quantity of duplicates, should increased attention be bestowed on the Entomological department of that Society.

# THE LAMELLICORN BEETLES,

DESCRIBED BY FABRICIUS.

<i>Fabrician Genera.</i>	<i>Fabrician Species.</i>	<i>The Countries they inhabit.</i>	<i>Modern Arrangement of Authors.</i>
1. LETHRUS.	1. Cephalotes	S. Europe	Lethrus, <i>Fabricius.</i>
	2. Æneus	N. Holland	Lamprima, <i>Latreille.</i>
2. GEOTRUPES.	1. Hercules	S. America	Dynastes, <i>MacLeay.</i>
	2. Alcides	S. America	Dynastes, <i>MacLeay.</i>
	3. Gideon	E. Indies	Xylotrupes, <i>Hope.</i>
	4. Oromedon	E. Indies	Xylotrupes, <i>Hope.</i>
	5. Centaurus	Africa	Xylotrupes, <i>Hope.</i>
	6. Ganymedes	Guinea	Xylotrupes, <i>Hope.</i>
	7. Jephtha	Guinea	Xylotrupes, <i>Hope.</i>
	8. Ægeon	S. America	Golopha, <i>Hope.</i>
	9. Chorinæus	Brazils	Megaceras, <i>Kirby.</i>
	10. Dichotomus	Japan	Xylotrupes, <i>Hope.</i>
	11. Claviger.	S. America	Golopha, <i>Hope.</i>
	12. Hastatus	S. America	Golopha, <i>Hope.</i>
	13. Enema	Brazils	Enema, <i>Kirby</i> , Type
	14. Pan	Brazils	Enema, <i>Kirby.</i>
	15. Bilobus	Cayenne	Xylotrupes, <i>Hope.</i>
	16. Cræsus	Java	Xylotrupes?
	17. Dædalus	S. America	Xylotrupes?
	18. Truncatus	New Holland	Cheiroplatys, <i>Kirby.</i>
	19. Zoilus	Cayenne	Xylotrupes, <i>Hope.</i>
	20. Actæon	S. America	Megasoma, <i>Kirby.</i>
	21. Simson	S. America	Megasoma, <i>Kirby.</i>
	22. Elephas	S. America	Megasoma, <i>Kirby.</i>
	23. Boas	P. B. S:	Oryctes, <i>Illiger.</i>
	24. Janus	Guinea	Xylotrupes, <i>Hope.</i>
	25. Bicornis	S. America	Xylotrupes, <i>Hope?</i>
	26. Orion	Senegal	Oryctes, <i>Illiger.</i>
	27. Bicolor	E. Indies	Orphnus, <i>MacLeay.</i>
	28. Tityus	N. & S. America	Dynastes, <i>MacLeay.</i>
	29. Atlas	E. Indies	Chalcosoma, <i>Hope.</i>
	30. Caucasus	E. Indies	Chalcosoma, <i>Hope.</i>
	31. Geryon	E. Indies	Xylotrupes, <i>Hope.</i>
	32. Alæus	Cayenne	Strategus, <i>Kirby.</i>
	33. Typhon	Bahia	Megasoma, <i>Kirby.</i>
	34. Vulcanus	Guadaloupe	Xylotrupes, <i>Hope?</i>

<i>Fabrician Genera.</i>	<i>Fabrician Species.</i>	<i>The Countries they inhabit.</i>	<i>Modern Arrangement of Authors.</i>
2. GEOTRUPES.	35. Semiramis	S. America	Strategus, <i>Kirby.</i>
	36. Antæus	S. America	Strategus, <i>Kirby.</i>
	37. Syphax	American Isles	Strategus, <i>Kirby.</i>
	38. Maimon	America	Strategus, <i>Kirby.</i>
	39. Titanus	S. America	Strategus, <i>Kirby.</i>
	40. Ænobarbus	Cuba	Strategus, <i>Kirby.</i>
	41. Nasicornis	Europe	Oryctes, <i>Illiger.</i>
	42. Sylvanus	Brazils	Cœlosis, <i>Kirby.</i>
	43. 4-spinosus	Brazils	Enema, <i>Kirby.</i>
	44. Milon	Brazils	Magaceras, <i>Kirby?</i>
	45. Ajax	Java	Oryctes, <i>Illiger?</i>
	46. Rhinoceros	Asia	Oryctes, <i>Illiger.</i>
	47. Barbarossa	New Holland	Oryctes, <i>Illiger.</i>
	48. Stentor	Mauritius	Oryctes, <i>Illiger.</i>
	49. Satyrus	N. America	Xyloryctes, <i>Hope.</i>
	50. Jamaciensis	Jamaica	Xyloryctes, <i>Hope.</i>
	51. Silenus	Europe	Oryctes, <i>Illiger.</i>
	52. Syrictus	P. B. S.	Syrictus, <i>Kirby</i> , (Type.)
	53. Hylax	P. B. S.	Monochclus, <i>Illiger?</i>
	54. Aries	P. B. S.	Syrictus, <i>Kirby.</i>
	55. Monodon	Europe	Xylotrupes, <i>Hope.</i>
	56. Coronatus	Java	Temnorhynchus, <i>Hope.</i>
	57. Dionysius	E. Indies	Oryctes, <i>Illiger?</i>
	58. Melibœus	N. America	Bolboceras, <i>Kirby.</i>
	59. Didymus	Cayenne	Phileurus, <i>Latreille.</i>
	60. Valgus	S. America	—————
	61. Depressus	S. America	—————
	62. Hircus	E. Indies	Oryctes, <i>Illiger.</i>
	63. Punctatus	Europe	Pentodon, <i>Kirby.</i>
	64. Fartus	Pennsylvania	Bolboceras, <i>Kirby.</i>
	65. Retusus	P. B. S.	Temnorhynchus, <i>Hope.</i>
	66. Piceus	E. Indies	Syrictus, <i>Kirby.</i>
	67. Excavatus	Naples	Pachypus, <i>Latreille.</i>
	68. Dentatus	Sumatra	Xylotrupes, <i>Hope.</i>
	69. Talpa	West India Isles	Xylotrupes, <i>Hope?</i>
	70. Cuniculus	American Isles	Bothynus, <i>Kirby.</i>
	71. Juvencus	N. America	Xylotrupes, <i>Hope.</i>
	72. Veter	E. Indies	Xylotrupes, <i>Hope?</i>
	73. Laborator	Brazils	Chalepus, <i>MacLeay.</i>
	74. Morator	E. Indies	Syrictus, <i>Kirby.</i>
	75. Arator	P. B. S.	Hybosorus, <i>MacLeay.</i>
	76. Globator	P. B. S.	Melolontha, <i>Fabricius.</i>



<i>Fabrician Genera.</i>	<i>Fabrician Species.</i>	<i>The Countries they inhabit.</i>	<i>Modern Arrangement of Authors.</i>
3. SCARABÆUS..	1. Dispar	Russia	Typhæus, <i>Leach.</i>
	2. Coryphæus	P. B. S.	Bolboceras, <i>Kirby.</i>
	3. Typhæus	Europe	Typhæus, <i>Leach.</i>
	4. Momus	Sicily	Typhæus, <i>Leach.</i>
	5. Lazarus	N. America	Bolboceras, <i>Kirby.</i>
	6. Quadridens	E. Indies	—————
	7. Mobilicornis	England	—————
	8. Cyclops	America ?	—————
	9. Longimanus	E. Indies	Eucheirus, <i>Kirby.</i>
	10. Stercorarius	England	Geotrupes, <i>Latreille.</i>
	11. Sylvaticus	Germany	—————
	12. Vernalis	England	—————
	13. Lævigatus	Tangier	—————
	14. Cordatus	Guadaloupe	Geotrupes ??
	15. Splendidus	N. America	Geotrupes, <i>Latreille.</i>
	16. Blackburnii	Pennsylvania	—————
4. ONITIS.	17. Testaceus	England	Bolboceras, <i>Kirby.</i>
	1. Inuus	S. Leone	Onitis, <i>Fabricius.</i>
	2. Aygulus	P. B. S.	—————
	3. Lophus	Barbary	—————
	4. Clinias	Hungary	—————
	5. Vandelli	Portugal	—————
	6. Apelles	P. B. S.	—————
	7. Bison	Spain	Bubas, <i>Megerle.</i>
	8. Jasius	S. America	Phanæus, <i>MacLeay.</i>
	9. Sphinx	E. Indies	Onitis, <i>Fabricius.</i>
	10. Belial	P. B. S.	Anachalcos, <i>Hope.</i>
5. COPRIS.	11. Unguiculatus	Senegal	Onitis, <i>Fabricius.</i>
	12. Nicanor	America	Copris, <i>Fabricius.</i>
	13. Menalcas	S. Russia	Onitis, <i>Fabricius.</i>
	14. Philemon	East Indies	—————
	1. Œdipus	P. B. S.	Copris, <i>Fabricius.</i>
	2. Rhadamistus	Calcutta	Oniticellus, <i>Ziegler.</i>
	3. Nemestrinus	P. B. S.	Copris, <i>Fabricius.</i>
	4. Jacchus	P. B. S.	—————
	5. Hastator	N. America	Onthophagus ?
	6. Sabæus	Coromandel	Copris, <i>Fabricius.</i>
	7. Nanus	Tranquebar	—————
8. Splendidulus	S. America	Phanæus, <i>MacLeay.</i>	
9. Conspicillatus	Brazils	Sternaspis, <i>Hope.</i>	
10. Festivus.	Cayenne	Sternaspis, <i>Hope.</i>	
11. Harpax	Guinea	Onthophagus, <i>Latreille.</i>	

<i>Fabrician Genera.</i>	<i>Fabrician Species.</i>	<i>The Countries they inhabit.</i>	<i>Modern Arrangement of Authors.</i>
5. COPRIS.	12. Pactolus	Bengal	Onthophagus, <i>Latreille.</i>
	13. Aurata	Guinea	_____
	14. Pithecius	Asia and Africa	Copris, <i>Fabricius.</i>
	15. Seniculus	Madras	Onthophagus, <i>Latreille.</i>
	16. Javana	Java	Onthophagus, <i>Latreille.</i>
	17. Metallica	E. Indies	_____
	18. Guineensis	Guinea	_____
	19. Canadensis	Canada	_____
	20. Latebrosus	N. America	_____
	21. Pygmæa	Tranquebar	_____
	22. Pardalis	E. Indies	_____
	23. Catta	Coromandel	_____
	24. Rosalius	America	Onthophagus?
	25. Ammon	N. America	Copris, <i>Fabricius.</i>
	26. Eryx	Guinea	Copris?
	27. Midas	Calcutta	Heliocopris, <i>Hope.</i>
	28. Hamadryas	P. B. S.	_____
	29. Lunaris	England	Copris, <i>Fabricius.</i>
	30. Emarginatus	France	_____
	31. Cœlata	P. B. S.	_____
	32. Belzebug	N. America	Phanæus, <i>Mac Leay.</i>
	33. Bifasciata	Coromandel	Onthophagus, <i>Latreille.</i>
	34. Dromedarius	East Indies	Onthophagus?
	35. Sinon	Goree	Copris, <i>Fabricius.</i>
	36. Faunus	Cayenne	Phanæus, <i>Mac Leay.</i>
	37. Pirmal	E. Indies	Copris, <i>Fabricius?</i>
	38. Tarandus	E. Indies	Onthophagus, <i>Latreille.</i>
	39. Capucinus	E. Indies	Copris, <i>Fabricius.</i>
	40. Carmelita	Guinea	_____
	41. Lucida	Europe	Onthophagus, <i>Latreille.</i>
	42. Lemur	Germany	_____
	43. Camelus	Austria	_____
	44. Vertagus	China	_____
	45. Melitæus	Tangier	Onthophagus?
	46. Unifasciatus	Tranquebar	Onthophagus?
	47. Æson	E. Indies	Athyreus, <i>Mac Leay.</i>
	48. Antenor	Senegal	Heliocopris, <i>Hope.</i>
	49. Bonasus	E. Indies	Onthophagus, <i>Latreille.</i>
	50. Sagittarius	China	_____
	51. Nimrod	Guinea	Onthophagus?
	52. Venator	Java	Onthophagus?
	53. Vulcanus	Tranquebar	Onthophagus, <i>Latreille.</i>



<i>Fabrician Genera.</i>	<i>Fabrician Species.</i>	<i>The Countries they inhabit.</i>	<i>Modern Arrangement of Authors.</i>
5. COPRIS.	54. Bucephalus	China	Heliocopris, <i>Hope.</i>
	55. Gigas	Africa	Heliocopris, <i>Hope.</i>
	56. Molossus	China	Copris, <i>Fabricius.</i>
	57. Ursus	Bengal	-----
	58. Lancifer	S. America	Phanæus, <i>MacLeay.</i>
	59. Paniscus	Barbary	Copris, <i>Fabricius.</i>
	60. Carolina	N. America	-----
	61. Nisus	Cayenne?	Copris, <i>Fabricius.</i>
	62. Meleager	Cayenne	Copris, <i>Fabricius.</i>
	63. Orientalis	E. Indies	Copris, <i>Fabricius.</i>
	64. Dorcas	Mauritania	Onthophagus?
	65. Tullius	E. Indies	Copris, <i>Fabricius.</i>
	66. Plutus	E. Indies	Copris, <i>Fabricius.</i>
	67. Fricator	E. Indies	Copris, <i>Fabricius.</i>
	68. Mimas	S. America	Phanæus, <i>Mac Leay.</i>
	69. Taurus	England	Onthophagus, <i>Latreille.</i>
	70. Vacca	England	-----
	71. Medea	Austria	-----
	72. Capra	Saxony	-----
	73. Cervus	E. Indies	-----
	74. Ibex	E. Indies	-----
	75. Alces	Hungary	-----
	76. Gazella	E. Indies?	-----
	77. Femorata	Sumatra	Oniticellus, <i>Zeigler.</i>
	78. Oryx	China	Onthophagus, <i>Latreille.</i>
	79. Nuchidens	Tranquebar	-----
	80. Tragus	China	Onthophagus?
	81. Antilope	East Indies	-----
	82. Dama	E. Indies	-----
83. Vitulus	E. Indies	-----	
84. Carnifex	N. America	Phanæus, <i>MacLeay.</i>	
85. Tridens	Africa?	Phanæus, <i>MacLeay.</i>	
86. Hispanus	Spain	Copris, <i>Fabricius.</i>	
87. Mopsus	E. Indies	Onthophagus, <i>Latreille.</i>	
88. Spinifex	Coromandel	-----	
89. Cœnobita	Europe	-----	
90. Nuchicornis	England	-----	
91. Fracticornis	Germany	-----	
92. Xiphias	England	-----	
93. Nutans	England	-----	
94. Ciconia	Guinea	Onthophagus?	
95. Ænea	Tranquebar	Onthophagus, <i>Latreille.</i>	

<i>Fabrician Genera.</i>	<i>Fabrician Species.</i>	<i>The Countries they inhabit.</i>	<i>Modern Arrangement of Authors.</i>
5. COPRIS.	96. Hyæna	P. B. S.	Onthophagus, <i>Latreille.</i>
	97. Thoracicus	Senegal	————
	98. Centricornis	E. Indies	————
	99. Unicornis	E. Indies	————
	100. Scabrosa	Surinam	Onitis, <i>Fabricius.</i>
	101. Furcula	E. Indies	Onthophagus ?
	102. Furcatus	France	Onthophagus, <i>Latreille.</i>
	103. Verticicornis	England	Onticellus, <i>Ziegler.</i>
	104. Sulcator	Cayenne	Copris, <i>Fabricius.</i>
	105. 4-pustulatus	N. Holland	Onthophagus, <i>Latreille.</i>
	106. Reflexus	China	Copris, <i>Fabricius.</i>
107. Hybneri	Germany	Onthophagus, <i>Latreille.</i>	
108. Quadricornis	Tranquebar	Onthophagus ?	
109. 4-dentatus	E. Indies	Bolboceras, <i>Kirby.</i>	
110. Cristatus	Egypt	Scarabæus, <i>MacLeay.</i>	
6. ATEUCHUS.	1. Sacer	Europe	Scarabæus, <i>MacLeay.</i>
	2. Laticollis	Gallia	————
	3. Semipunctatus	Barbary	————
	4. Variolosus	S. Europe	————
	5. Miliaris	E. Indies	Gymnopleurus, <i>Illiger.</i>
	6. Sanctus	Bengal	Scarabæus, <i>MacLeay.</i>
	7. Morbillosus	Guinea	————
	8. Intricatus	P. B. S.	————
	9. Profanus	Guinea	Gymnopleurus, <i>Illiger.</i>
	10. Cyaneus	Bombay	————
	11. Minutus	E. Indies	Sisyphus, <i>Latreille.</i>
	12. Bacchus	P. B. S.	Cercellium, <i>Latreille.</i>
	13. Gibbosus	N. America	Hyboma, <i>Serville.</i>
	14. Azureus	Guinea	Gymnopleurus, <i>Illiger.</i>
	15. Hollandiæ	N. Holland	Anisodon, <i>Hope.</i>
	16. Leei	E. Indies	Gymnopleurus, <i>Illiger.</i>
	17. Smaragdulus	S. America	Coprobius, <i>Latreille.</i>
	18. Muricatus	Africa ?	Sisyphus, <i>Latreille.</i>
	19. Kœnigii	Madras	Gymnopleurus, <i>Illiger.</i>
	20. Granulatus	Tranquebar	————
	21. Cupreus	Africa	Anachalcos, <i>Hope.</i>
	22. Flagellatus	Barbary	Gymnopleurus, <i>Illiger.</i>
	23. Scabratus	P. B. S.	Epirinus, <i>D. J.</i>
	24. Schæfferi	Germany	Sisyphus, <i>Latreille.</i>
	25. Helwigii	Tranquebar	Gymnopleurus ?
	26. Volvens	N. America	Coprobius, <i>Latreille.</i>
	27. Pillularius	S. Europe	Gymnopleurus, <i>Illiger.</i>

<i>Fabrician Genera.</i>	<i>Fabrician Species.</i>	<i>The Countries they inhabit.</i>	<i>Modern Arrangement of Authors.</i>	
6. ATEUCHUS.	28. Sinuatus	China	Gymnopleurus, <i>Illiger.</i>	
	29. Obliquus	Senegal	Onthophagus, <i>Lat.</i>	
	30. Squalidus	Brazils	Coprobium, <i>Hope?</i>	
	31. Planus	Java	Onthophagus?	
	32. Schreberi	Germany	Onthophagus, <i>Lat.</i>	
	33. Bidens	S. America	Coprobium?	
	34. Glabratus	Barbary	Scarabæus, <i>MacLeay.</i>	
	35. Lævigatus	E. Indies	Onthophagus, <i>Lat.</i>	
	36. Capistratus	Carolina	Chæridium, <i>Serville.</i>	
	37. 2-pustulatus	N. Holland	Onthophagus, <i>Hope?</i>	
	38. Pallipes	Coromandel	Oniticellus, <i>Ziegler.</i>	
	39. Flavipes	Germany	_____	
	40. Pallens	Morocco	_____	
	41. Cinctus	China	_____	
	42. 3-angularis	Surinam	Coprobium, <i>Lat.</i>	
	43. Affinis	S. America	_____	
	44. Melanocephalus	American Isles	Chæridium, <i>Serville.</i>	
	45. Maculatus	Guinea	Gymnopleurus.	
	46. Politus	Tranquebar	Onthophagus?	
	47. 6-punctatus	Cayenne	Coprobium, <i>Lat.</i>	
	48. Violaceus	St. Domingo	_____	
	49. 2-tuberculatus	S. America	Onthophagus, <i>Lat.</i>	
	50. Discoideus	Africa	Onthophagus.	
	51. Aterrimus	E. Indies	Onthophagus.	
	52. Ovatus	Europe	Onthophagus, <i>Lat.</i>	
	53. Chrysis	S. America	Onthophagus?	
	54. Pusillus	E. Indies	Onthophagus.	
	55. Variiegatus	E. Indies	_____	
	56. Parvulus	E. Indies	_____	
	57. Fuscopunctatus	E. Indies	_____	
	58. Femoratus	S. America	_____	
	7. *APHODIUS.	48. Marginellus	Coromandel	Oxyomus, <i>Eschscholtz.</i>
		56. Sabuleti	Switzerland	{ Oxyomus, <i>Eschscholtz.</i> { Psammodius, <i>Gyllenhall.</i>
57. Porcatus		Saxony	Psammodius, <i>Gyllenhall.</i>	
58. Stercorator		S. America	Oxyomus, <i>Eschscholtz.</i>	
61. Asper		Paris	Psammodius, <i>Gyllenhall.</i>	
65. Cæsus		Germany	_____	

\* The Fabrician species of Aphodius are for the most part still retained under that generic name, although the genus must at some future time be divided into various subgenera; I have, therefore, only stated those which have already been separated from it.

<i>Fabrician Genera.</i>	<i>Fabrician Species.</i>	<i>The Countries they inhabit.</i>	<i>Modern Arrangement of Authors.</i>
8. HEXODON.	1. Reticulatum	Madagascar	Hexodon, <i>Fab.</i>
	2. Unicolor	Madagascar	_____
9. TRICHIUS.	1. Eremita	Europe	Osmoderma, <i>Serville.</i>
	2. Nobilis	England	Gnorimus, <i>Serville.</i>
	3. 8-punctatus	England	Gnorimus, <i>Serville.</i>
	4. Fasciatus	Europe	Trichius, <i>Fab.</i>
	5. Succinctus	England	Trichius, <i>Fab.</i>
	6. Indus	N. America	Cetonia, <i>Gory.</i>
	7. 2-punctatus	P. B. S.	Popillia, <i>Leach.</i>
	8. Bidens	N. America	Trichius, <i>Fab.</i>
	9. Hemipterus	France	Valgus, <i>Scriba.</i>
	10. Canaliculatus	N. America	Valgus, <i>Scriba.</i>
	11. Lunulatus	Carolina	Trichius, <i>Fab.</i>
	12. Viridulus	N. America	_____
	13. Piger	Maryland	_____
	14. Delta	N. America	_____
	15. Lineatus	P. B. S.	Lepitrix, <i>Serville.</i>
	16. Retusus	S. America	Cnemida, <i>Kirby</i>
	17. Nigripes	P. B. S.	Lepitrix, <i>Serville.</i>
	18. Maculatus	P. B. S.	Monocheilus, <i>Illiger.</i>
	19. Hirtus	P. B. S.	Trichius ?
	20. Pilosus	P. B. S.	Monocheilus ?
	21. Minutus	S. America	Trichius ?
10. CETONIA.	1. Goliata	Africa	Goliathus, <i>Lamarch.</i>
	2. Cacicus	Guinea	Goliathus, <i>Lamarch.</i>
	3. Bifrons	S. America	Ynca, <i>Serville.</i>
	4. Polyphemus	Africa	Mecynorhina, <i>Hope.</i>
	5. Ynca	Peru	Ynca, <i>Serville, Type.</i>
	6. Micans	Africa	Mecynorhina, <i>Hope.</i>
	7. Chinensis	China	Agestrata, <i>Eschscholtz.</i>
	8. Nigrita	Ceylon	Agestrata, <i>Eschscholtz.</i>
	9. Aurata	England	Cetonia, <i>Fab.</i>
	10. Fastuosa	Austria	_____
	11. Marmorata	Europe	_____
	12. Viridis	Italy	_____
	13. Recurva	Guinea	Cetonia ?
	14. Metallica	Italy	Cetonia, <i>Fab.</i>
	15. Pubescens	P. B. S.	_____
	16. Opaca	Africa	_____
	17. Morio	Europe	_____
	18. Cuspidata	P. B. S.	Ichnestoma, <i>Gory.</i>
	19. Cordata	P. B. S.	Cetonia, <i>Fab.</i>

<i>Fabrician Genera.</i>	<i>Fabrician Species.</i>	<i>The Countries they inhabit.</i>	<i>Modern Arrangement of Authors.</i>
10. CETONIA.	20. 4-punctata	Italy	Cetonia, <i>Fabricius.</i>
	21. Rufipes	E. Indies	Popillia, <i>Leach.</i>
	22. Holosericea	Surinam	Gymnetis, <i>MacLeay.</i>
	23. Strigosa	S. America	—————
	24. Nitida	N. America	—————
	25. Lobata	S. America	—————
	26. Carmelita	Africa	Cetonia, <i>Fab.</i>
	27. Sulcata	Madagascar	—————
	28. Chrysis	S. America	Macraspis, <i>MacLeay.</i>
	29. Virens	S. America	—————
	30. Splendida	S. America	Macraspis, <i>MacLeay.</i>
	31. Lucida	Guadaloupe	—————
	32. Francisca	E. Indies ?	Rutela ?
	33. Capucina	E. Indies ?	Macraspis ?
	34. Lanius	S. America	Gymnetis, <i>MacLeay.</i>
	35. Bajula	S. America	—————
	36. Flaveola	S. America	—————
	37. Graculus	America	—————
	38. Litrata	S. America	—————
	39. Carnifex	S. America	Diplognatha, <i>Gory.</i>
	40. Glabrata	E. Indies ?	Rutela, <i>Hope ?</i>
	41. Rauca	P. B. S.	Cetonia ?
	42. Cornuta	P. B. S.	Novum Genus.
	43. Tristis	S. America	Gymnetis, <i>MacLeay.</i>
	44. Smaragdula	America	Macraspis, <i>MacLeay.</i>
	45. Fascicularis	Africa	Cetonia, <i>Fab.</i>
	46. Aulica	P. B. S.	—————
	47. Purpurascens	Senegal	—————
	48. Capensis	P. B. S.	—————
	49. Signata	P. B. S.	—————
	50. Marginata	Guinea	—————
	51. Ornata	Guinea	—————
	52. Marginella	S. Leone	—————
	53. Lineola	S. America	Rutela, <i>Latreille.</i>
	54. Scutellata	Guinea	Macroma, <i>Gory.</i>
	55. Striata	Guadaloupe	Rutela ?
	56. Flavomaculata	P. B. S.	Gnathocera, <i>Kirby.</i>
	57. Sinuata	P. B. S.	Cetonia, <i>Fab.</i>
	58. Fasciata	Alexandria	Cetonia ?
	59. Olivacea	S. Leone	Cetonia, <i>Fab.</i>
	60. Interrupta	Senegal	—————
	61. Picta	E. Indies	Macronata ? <i>Hoffmansegg.</i>

<i>Fabrician Genera.</i>	<i>Fabrician Specis.</i>	<i>The Countries they inhabit.</i>	<i>Modern Arrangement of Authors.</i>
10. CETONIA.	62. 3-lineata	P. B. S.	Macronata? <i>Hoffmansegg.</i>
	63. Elata	Guinea	Amphistoros, <i>Gory.</i>
	64. Semipunctata	P. B. S.	Cetonia, <i>Fab.</i>
	65. 5-lineata	E. Indies	Macronata, <i>Hoffmansegg.</i>
	66. Atromaculata	Poona	Cetonia, <i>Fab.</i>
	67. Limbata	Egypt	Agenius, <i>Serville.</i>
	68. Trigona	S. America	Chasmodia, <i>MacLeay.</i>
	69. Elegans	Madras	Gnathocera, <i>Kirby.</i>
	70. 4-maculata	Africa	Mecynorhina, <i>Hope?</i>
	71. 6-maculata	Sumatra	Gnathocera, <i>Kirby.</i>
	72. Cuprea	Surinam	Cetonia, <i>Fab.?</i>
	73. Africana	S. Leone	Gnathocera, <i>Kirby.</i>
	74. Læta	E. Indies	—————
	75. Suturalis	Senegal	—————
	76. Vittata	Africa	Trichius, <i>Fab.</i>
	77. Fulgida	Pennsylvania	Cetonia, <i>Fab.</i>
	78. Iris	Surinam	Cetonia?
	79. Gagates	S. Leone	Diplognatha, <i>Gory.</i>
	80. Tetradactyla	S. America	Macraspis, <i>MacLeay.</i>
	81. Clavata	S. America	—————
	82. Fucata	S. America	—————
	83. Lurida	Brazils	Cetonia, <i>Fab.</i>
	84. Mixta	Sumatra	—————
	85. Lunulata	S. America?	Rutela? <i>Hope?</i>
	86. Aurichalcea	Surat	Cetonia, <i>Fab.</i>
	87. Nitidula	Africa	—————
	88. Philippensis	China	—————
	89. Stolata	Senegal	—————
	90. Atomaria	China	—————
	91. Festiva	Tranquebar	—————
	92. Abbreviata	Senegal	Cetonia?
	93. Maculata	Coromandel	Cetonia, <i>Fab.</i>
	94. Difformis	Madras	—————
	95. Acuminata	P. B. S.	—————
	96. Marmorata	Sumatra	—————
	97. Hæmorrhoidalis	P. B. S.	—————
	98. Adspersa	P. B. S.	—————
	99. Areata	Virginia	—————
	100. Hirta	Spain	—————
	101. Funesta	Italy	—————
	102. Stictica	France	—————
	103. Albopunctata	E. Indies	—————



<i>Fabrician Genera.</i>	<i>Fabrician Species.</i>	<i>The Countries they inhabit.</i>	<i>Modern Arrangement of Authors.</i>
10. CETONIA.	104. Cinerascens	P. B. S.	Cetonia, <i>Fab.</i>
	105. Irrorata	P. B. S.	Cetonia, <i>Fab.</i>
	106. Furvata	P. B. S.	————
	107. Sepulchralis	Carolina	————
	108. Punctulata	Senegal	————
	109. Floralis	Africa	Cetonia ?
	110. 14-maculata	E. Indies	Gymnetis, <i>MacLeay.</i>
	111. Versicolor	Egypt	Cetonia, <i>Fab.</i>
	112. Variegata	Tranquebar	————
	113. Torquata	Africa ?	————
	114. Æquinoctialis	Senegal	————
	115. Sanguinolenta	Senegal	————
	116. Discoidea	Caffraria	————
	117. Lugubris	P. B. S.	————
	118. Histrio	Egypt	————
	119. Modesta	Tranquebar	————
	120. Gloriosa	St. Domingo	Rutela, <i>Latreille.</i>
	121. Maura	Guinea	Cremastocheilus, <i>Gory.</i>
	122. Hottentottus	P. B. S.	Genuchus, <i>MacLeay.</i>
	123. Regia	Sumatra	Macronata, <i>Hoffmansegg.</i>
124. Cruenta	P. B. S.	Genuchus, <i>MacLeay.</i>	
11. MELOLONTHA.	1. Stigma	Java	Lepidiota, <i>Kirby.</i>
	2. Alba	Sumatra	————
	3. Fullo	England	Melolontha, <i>Type.</i>
	4. Rorida	Sumatra	Lepidiota, <i>Kirby.</i>
	5. Serrata	E. Indies	Holotrichia, <i>Kirby.</i>
	6. Vulgaris	England	Melolontha, <i>Fab.</i>
	7. Hippocastani	Italy	————
	8. Villosa	Austria	————
	9. Pilosa	Hungary	————
	10. Occidentalis	Austria	————
	11. Fervida	N. America	Holotrichia, <i>Kirby?</i>
	12. Transversa	Austria	Aplidia, <i>Kirby.</i>
	13. Reflexa	P. B. S. ?	Holotrichia, <i>Kirby?</i>
	14. Alopex	P. B. S.	Cephalotrichia, <i>Kirby.</i>
	15. Tomentosa	E. Indies	Lepidiota, <i>Kirby.</i>
	16. Solstitialis	England	Rhisotrogus, <i>Lat.</i>
	17. Bidens	Carolina	Holotrichia, <i>Kirby.</i>
	18. Candida	E. Indies	Lepidiota, <i>Kirby.</i>
	19. Atra	S. Europe	Rhisotrogus, <i>Lat.</i>
	20. Æquinoctialis	Hungary	Microdonta, <i>Kirby.</i>
	21. Pini	Barbary	Microdonta, <i>Kirby.</i>

<i>Fabrician Genera.</i>	<i>Fabrician Species.</i>	<i>The Countries they inhabit.</i>	<i>Modern Arrangement of Authors.</i>
11. MELOLONTHA.	22. 2-maculata	China	Cyclocephala ?
	23. Atriplicis	Barbary	Hoplopus, <i>Laporte.</i>
	24. Oblonga	Bavaria	Anomala, <i>Megerle.</i>
	25. Ruficornis	Germany	Rhisotrogus, <i>Lat.</i>
	26. Lanigera	N. America	Areoda, <i>Leach.</i>
	27. Longicornis	P. B. S.	Macrophyllus, <i>Hope.</i>
	28. Punctata	N. America	Pelidnota, <i>MacLeay.</i>
	29. Viridis	China	Euchlora, <i>MacLeay.</i>
	30. Ænea	N. Holland	Repsimus, <i>Leach.</i>
	31. Saturalis	N. Zealand	Stethaspis, <i>Hope.</i>
	32. Bicolor	Madras	Euchlora, <i>MacLeay.</i>
	33. Geminata	S. America	Chalepus, <i>MacLeay.</i>
	34. Barbata	W. Indies	—————
	35. Morio	E. Indies	Chalepus ?
	36. Castanea	S. America	Cyclocephala, <i>Lat.</i>
	37. Rufipennis	S. America	Cyclocephala ?
	38. Elata	Tranquebar	Anomala, <i>Megerle.</i>
	39. Dorsalis	Tranquebar	—————
	40. Glacialis	Terra del Fuego	Macrosoma, <i>Hope.</i>
	41. Lurida	Unknown	Unknown.
	42. Striata	Terra del Fuego	Macrosoma, <i>Hope.</i>
	43. Tristis	N. America	Unknown.
	44. Testacea	Terra del Fuego	Macrosoma, <i>Hope.</i>
	45. Hirticollis	Africa	Unknown.
	46. Pallida	P. B. S.	Anomala, <i>Megerle.</i>
	47. Ruficollis	Coromandel	Schizonycha, <i>D. J.</i>
	48. Quadridens	E. Indies	Melolontha ?
	49. Variolosa	P. B. S.	Schizonycha, <i>D. J.</i>
	50. Lanata	Mauritius	Adoretus, <i>Eschsch.</i>
	51. Signata	Jamaica	Cyclocephala, <i>Lat.</i>
	52. Marginata	S. America	Cyclocephala ?
	53. Cyanocephala	Europe ?	Anomala ?
	54. Brunnea	England	Serica, <i>MacLeay.</i>
	55. Melanocephala	Brazils	Cyclocephala, <i>Lat.</i>
	56. Ferruginea	Cayenne	—————
	57. Pallens	Cayenne	—————
	58. Erythrocephala	Coromandel	Apogonia, <i>Kirby.</i>
	59. Tridentata	Guadaloupe	Cyclocephala ?
	60. Mixta	Guinea ?	Anomala, <i>Megerle.</i>
	61. Obscura	Æquin. Africa	Adoretus, <i>Eschscholtz.</i>
	62. Rufa	P. B. S.	Novum Genus.
	63. Festiva	N. Zealand	Calonota, <i>Hope.</i>



<i>Fabrician Genera.</i>	<i>Fabrician Species.</i>	<i>The Countries they inhabit.</i>	<i>Modern Arrangement of Authors.</i>
11. MELOLONTHA.	64. <i>Loeta</i>	N. Zealand	<i>Calonota, Hope.</i>
	65. <i>Holosericea</i>	S. Russia	<i>Rhombonyx, Kirby.</i>
	66. <i>Julii</i>	France	<i>Anomala, Megerle.</i>
	67. <i>Nigrita</i>	America	<i>Anomala?</i>
	68. <i>Frischii</i>	Germany	<i>Anomala, Megerle.</i>
	69. <i>Vitis</i>	France	—————
	70. <i>Aurata</i>	Carniola	—————
	71. <i>Cardui</i>	Africa	<i>Glaphyrus, Lat.</i>
	72. <i>Serratulæ</i>	Barbary	<i>Glaphyrus?</i>
	73. <i>Fastuosa</i>	East Indies	<i>Mimela, Kirby.</i>
	74. <i>Errans</i>	N. America	<i>Anomala, Megerle.</i>
	75. <i>Varians</i>	S. America	—————
	76. <i>Umbrosa</i>	Guinea	<i>Serica, MacLeay.</i>
	77. <i>Rupicola</i>	P. B. S.	<i>Lepisia, Serville.</i>
	78. <i>Innuba</i>	Rio Janeiro	<i>Anomala, Megerle.</i>
	79. <i>Elongata</i>	N. America	<i>Philochlænia, D. J.</i>
	80. <i>Rauca</i>	Coromandel	<i>Apogonia, Kirby.</i>
	81. <i>Ferruginea</i>	Bombay	—————
	82. <i>Mærens</i>	N. America	Unknown.
	83. <i>Splendida</i>	P. B. S.	<i>Serica, MacLeay?</i>
	84. <i>Aulicola</i>	Equin. Africa	Novum Genus.
	85. <i>Lucicola</i>	N. America	<i>Anomala, Megerle.</i>
	86. <i>Atrata</i>	N. America	—————
	87. <i>Arboricola</i>	America	<i>Anisoplia?</i>
	88. <i>Horticola</i>	England	<i>Anisoplia, Megerle.</i>
89. <i>Nitidula</i>	N. America	<i>Anisoplia?</i>	
90. <i>Abdominalis</i>	Italy	<i>Anthipna, Eschsch.</i>	
91. <i>Floricola</i>	Austria	<i>Anisoplia, Megerle.</i>	
92. <i>Arvicola</i>	S. Russia	—————	
93. <i>Praticola</i>	Siberia	<i>Hoplia, Illiger.</i>	
94. <i>Fruticola</i>	Italy	<i>Anisoplia, Megerle.</i>	
95. <i>Agricola</i>	Germany	—————	
96. <i>Lineata</i>	Africa	<i>Lepitrix, Serville.</i>	
97. <i>Ruricola</i>	Saxony	<i>Serica, MacLeay.</i>	
98. <i>Atomaria</i>	P. B. S.	<i>Gymnoloma, D. J.</i>	
99. <i>Farinosa</i>	France	<i>Hoplia, Illiger.</i>	
100. <i>Squamosa</i>	Switzerland	—————	
101. <i>Bilineata</i>	Tangiers	<i>Hoplia, Illiger.</i>	
102. <i>Regia</i>	Algiers	—————	
103. <i>Glabrata</i>	S. America	<i>Hoplia?</i>	
104. <i>Ridens</i>	N. America?	<i>Hoplia?</i>	
105. <i>Argentea</i>	England	<i>Hoplia, Illiger.</i>	

<i>Fabrician Genera.</i>	<i>Fabrician Species.</i>	<i>The Countries they inhabit.</i>	<i>Modern Arrangement of Authors.</i>
11. MELOLONTHA.	106. Graminicola	Germany	Hoplia, <i>Illiger.</i>
	107. Pygmæa	Carolina	Anisoplia, <i>Megerle.</i>
	108. Chrysomelina	Austria	Ochodæus, <i>Megerle.</i>
	109. Capicola	P. B. S.	Lepitrix, <i>Serville.</i>
	110. Cincta	Guadaloupe	Anisoplia, <i>Megerle.</i>
	111. Proboscidea	E. Indies	Anisoplia ?
	112. Spinipes	P. B. S.	Dichelus, <i>Serville.</i>
	113. Dentipes	P. B. S.	_____
	114. Podagrica	P. B. S.	Monocheilus, <i>Illiger.</i>
	115. Arthritica	P. B. S.	_____
	116. Gonagra	P. B. S.	Monocheilus ?
	117. Crassipes	P. B. S.	Monocheilus, <i>Illiger.</i>
	118. Calcarata	P. B. S.	Dichelus ?
	119. Cancroides	P. B. S.	Pachycnema, <i>Serville.</i>
	120. Marginella	P. B. S.	Pachycnema ?
	121. Pulverulenta	Germany	Hoplia, <i>Illiger.</i>
	122. Morio	Barbary	Anisoplia ?
	123. Sylvicola	N. Holland	Liparetra, <i>Kirby.</i>
	124. Subspinosa	W. Indian Isles	Macroactylus, <i>Latreille.</i>
	125. Longipes	P. B. S.	Dichelus, <i>Serville.</i>
	126. Abbreviata	P. B. S.	Lepitrix, <i>Serville.</i>
	127. Minuta	P. B. S.	Dichelus, <i>Serville.</i>
	128. Mutabilis	Tranquebar	Serica, <i>MacLeay.</i>
	129. Variabilis	Germany	_____
	130. Versicolor	Sierra Leone	_____
	131. Splendidula	Sumatra	_____
	132. Micans	Amboyna	Serica ?
133. Picea	P. B. S.	Trochalus, <i>Laporte.</i>	
134. Discoidea	Guinea	Trochalus ?	
135. Araneoides	P. B. S.	Lepitrix ?	
136. 4-lineata	Sierra Leone	Trochalus, <i>Laporte.</i>	
137. Gibba	P. B. S.	_____	
138. Monticola	N. Holland	Liparetra, <i>Kirby.</i>	
139. Humeralis	England	Serica, <i>MacLeay.</i>	
140. Ursus	P. B. S.	Anisonyx, <i>Latreille.</i>	
141. Bombyliformis	Siberia	Amphicoma, <i>Latreille.</i>	
142. Lynx	P. B. S.	Anisonyx, <i>Latreille.</i>	
143. Crinita	P. B. S.	_____	
144. Cyanipennis	Tangiers	Amphicoma, <i>Latreille.</i>	
145. Hirta	Siberia	_____	
146. Vulpes	Siberia	_____	
147. Meles	Barbary	_____	

<i>Fabrician Genera.</i>	<i>Fabrician Species.</i>	<i>The Countries they inhabit.</i>	<i>Modern Arrangement of Authors.</i>
11. MELOLONTHA.	148. Bombylius	Africa	Amphicoma, <i>Latreille.</i>
	149. Vittata	Persia	Glaphyrus, <i>Latreille.</i>
12. LUCANUS.	1. Alces	East Indies	Lucanus, <i>Linnè.</i>
	2. Giraffa	East Indies	-----
	3. Cervus	England	-----
	4. Elaphus	Virginia	-----
	5. Capreolus	Germany	-----
	6. Dama	Virginia	-----
	7. Femoratus	Cayenne	-----
	8. Bison	S. America	-----
	9. Gazella	Siam	-----
	10. Lama	East Indies	-----
	11. Suturalis	Japan ?	-----
	12. Saiga	S. America	-----
	13. Taurus	Sumatra	-----
	14. Acuminatus	Java	<i>Ægus, MacLeay.</i>
	15. Barbarossa	Tangiers	<i>Dorcus, MacLeay ?</i>
	16. Parallelipipedus	England	<i>Dorcus, MacLeay.</i>
	17. Inermis	Sumatra	<i>Ægus, MacLeay.</i>
	18. Cancroides	N. Holland	-----
	19. Lunatus	Sumatra	-----
	20. Piceus	America	<i>Ceruchus, MacLeay.</i>
	21. Tenebrioides	N. Europe	<i>Ceruchus, (Type.)</i>
	22. Striatus	E. Indies	<i>Figulus, MacLeay.</i>
	23. Caraboides	England	<i>Platycerus, Lat.</i>
	24. Rufipes	Switzerland	-----
	25. Punctatus	Sumatra	<i>Figulus, MacLeay.</i>
13. ÆSALUS.	1. Scarabæoides	Austria	<i>Æsalus, Fab.</i>
14. PASSALUS.*	1. Interruptus	S. America	<i>Passalus, Fabricius.</i>

\* In the Systema Eleutheratorum of Fabricius, seven species of Passalus are mentioned; as none of them have been separated from that genus by later writers, there is no necessity of adding them to the present Tables.



## REMARKS AND OBSERVATIONS

ON THE

## LAMELLICORNS OF FABRICIUS.

---

### 1. LETHRUS.

SPECIES 2. *Æneus*, now the type of Latreille's genus *Lamprima*. The student who wishes for information respecting the several species forming this Genus must consult the *Horæ Entomologicæ* of Mr. MacLeay, and for the true *Lethrus*, the *Entomographie de la Russie*, par Gotthelf Fischer, tome 1. p. 133. I have lately received two new species of *Lamprima* which apparently are not described, one from Melville Island, and the other from the new settlement at the Swan River in New Holland.

### 2. GEOTRUPES.

SP. 5, 6, 7.—It is probable that these three species of *Xylotrupes* may be formed at a future time into a sub-genus; they are of rare occurrence, and

I am not inclined to dissect the only specimens I possess.

SP. 8. *Ægeon*.—The details of the new genus *Golofa*, will be found in a paper in the second volume of the Transactions of the Entomological Society of London, where all the species are enumerated which have fallen under my inspection.

SP. 17. *Dædalus*.—It has been asserted that the female of *Dædalus* is the *Melolontha diadema* Olivier. I confess I can scarcely believe it. There seems a doubt respecting the country where it was taken, according to Sehestedt it is from the East Indies, and in various collections of the Continent it is labelled from South America; probably two distinct species are included under the above name.

SP. 20. *Actæon*.—The characters of the Genus *Megasoma*, Kirby, are amply detailed in the fourteenth volume of the Linnean Transactions, to which the reader is referred. *Sc. Hector*, Gory, undoubtedly belongs to it.

SP. 27. *Bicolor*.—This insect is the type of Mr. W. Sharpe MacLeay's genus *Orphnus*; it occurs in the East Indies, where there are several species, and, according to De Jean, also inhabits Africa. *Oryctes* and *Orphnus* are evidently closely allied.

SP. 33. *Typhon*.—The locality of this species is not recorded by Fabricius. I have received it from Bahia. It occurs also in other parts of South America. Most of these gigantic Beetles are figured in the old writers on Entomology. This species is subject to vary considerably. *Laniger* of Olivier, *Goliathus* of Voet, and *Esau* of Jablonsky, are only varieties of the same species.

SP. 44. *Milon*.—This insect ought to form the type of a distinct genus, at present I range it with *Megaceras* of Kirby, which it evidently approaches; a second specimen from the island of Java will be found in the Kirbyan collection so generously presented by that individual to the Entomological Society of London.

SP. 47. *Barbarossa*.—This insect diverges from the type of *Oryctes*; apparently there are two other insects confounded in various collections with it, one from the new settlement at Swan River, and the other from Melville Island.

SP. 65. *Retusus*.—The Baron De Jean has given the generic name of *Coptorhinus* to this species, a name which was published by me some years since in the Zoological Transactions, it must therefore be changed; as it is significant of the genus, I substitute for it the term *Temnorhynchus*.



SP. 75. *Arator*.—The type of the genus *Hybosorus*, MacLeay. The generic characters were first published by the celebrated author of the *Horæ Entomologicæ*; the opinion therein expressed of the wide range of this insect appears to be substantiated; from late discoveries it seems to inhabit the New as well as the Old World.

SP. 76. *Globator Fab.*—This insect, with several others closely allied to it, appears to form a distinct genus. The Baron de Jean has thrown together several species under the term *Schizonycha*. Now, as that generic name is applicable to many of the *Melolonthidæ* I merely range *globator* under *Melolontha*, till such time as the generic characters are detailed. Generic names without published characters, and specifying a type, ought not at the present day to be admitted by any person calling himself an Entomologist.

### 3. SCARABÆUS.

SP. 2. *Coryphæus*.—Now of the genus *Bolbo-ceras* Kirby. The singular forms of these Insects are well worthy of attention. It is to be hoped that some individual will undertake a Monograph of them. I am acquainted with more than 30 species,

the major part are from New Holland and the East Indies.

SP. 10. *Stercorarius*.—Latreille has asserted that the genus *Geotrupes*, to which this species belongs, is not found in the East Indies. I have received a singular and beautiful species from Madras; a second is found on the Himalaya, and the most magnificent of all the species inhabits Japan. If I am not mistaken there are two, if not three species in the Leyden cabinet from the latter locality.

SP. 14. *Cordatus*.—I have ranged this insect for the present as a *Geotrupes*—it has never fallen under my inspection. It is not unlikely that as Guadaloupe is the extreme range to which *Geotrupes* extends, *Cordatus* will be found to diverge from the type of the Genus.

#### 4. ONITIS.

SP. 6. *Apelles*.—This Insect appears to recede from the true type of *Onitis*. The female of this species has the anterior tibiæ provided with tarsi; the tibiæ of the male are armed internally with a spine, and between the spine and the apex there are denticulations.

SP. 8. *Jasius*.—According to Mr. MacLeay the insects denominated *Jasius*, by Olivier and Fabri-

cius, are distinct; the former retains the original name, while that of Dardanus has been given to the Fabrician species. The species of Phanæus are liable to vary considerably.

SP. 10. *Belial*.—This insect appears to be the same as *Ateuchus Cupreus* of Fabricius and Olivier. I have in my MSS. given the name of *Anachalcos*, from *ανα*, *ανα* supra, and *χαλκος* æneus, for a generic name to this insect. The following characters may probably be considered sufficiently comprehensive to denote an insect which is tolerably well known. “*Corpus supra valde convexum, clypeo emarginato thoraco gibboso subangulato. Femoribus anterioribus valde dilatatis compressis, pedibus mediis longioribus, posticis longissimis, tibiis subarcuatis seu incurvis.*” A second species allied to the above is in my collection, received from Sierra Leone; a third also has fallen under my inspection. Fabricius gives Cayenne as its native country, which is an error, from confounding a species of *Hyboma* of South America with this insect, which is typical only of an African locality.

## 5. COPRIS.

SP. 1 & 4. *Ædipus* & *Iacchus*.—These two species of Copris appear to belong to a sub-genus. Copris Syphax of Kirby may also be united with them.

SP. 2. *Rhadamisthus*.—This insect cannot be considered as a true Oniticellus with which the Baron De Jean has ranged it, as both sexes appear to possess anterior tarsi. Several, indeed, of the subscutellated Onitidæ (with the exception of Onitis Apelles) have the males only provided with them. I propose the term Scaptodera, from *σκαπτω* fodeo et *δερη* collum, as a generic term, to include this insect and its allied species. The following are the details:—"Genus forsitan inter Onitim et Oniticellum ponendum. Exscutellatum. Clypeus rotundatus, capite inermi, Thorax late foveolatus antice cornutus. Tibiæ anteriores in utroque sexu tarsis instructæ. In reliquis Oniticello convenit." A second species of Scaptodera I have received from Captain Smee, from near Salsette, and by my journal I find a third is in the Leyden collection; all are from the East Indies.

SP. 9. *Conspicillatus*.—Mr. MacLeay, in his *Horæ Entomologicæ* gives five types of form belonging to Phanæus; the fourth affords a sufficient

character for forming it into a new genus, which I propose to call *Sternaspis* from the sternum being produced into a strong spine. To this sub-genus belong *Ph. Festivus*, *hilaris*, *lautus*, and several others ; the details are given by the above author.

SP. 26. *Eryx*.—From the Fabrician description (as it is compared with *Cop. Hamadryas* in stature and magnitude) I was inclined to think this insect an *Heliocopris*, but from the clypeus being divided in the middle, and from the locality of Guinea being mentioned, I am in doubt where to place it, and leave it for the present as a *Copris*.

SP. 31. *Cælata*.—From a reference to Voet's figure, plate 23, fig. 6. this insect is a true *Copris*.

SP. 37. *Pirmal*.—This species was described from the cabinets of Daldorff and Sehestedt ; in the Copenhagen collection we may still find it deposited, and ascertain if it be really a *Copris*.

SP. 45. *Melitæus*.—Mentioned as in the collections of D. Schousboe and Sehestedt. I cannot give any information respecting this species.

SP. 47. *Æson*.—According to Mr. MacLeay this insect probably belongs to his genus *Athyreus* ; it has never fallen under my inspection, nor can I state in what collection on the Continent it is deposited, unless it is in the Copenhagen collection.

SP. 60. *Carolina*.—This species of *Copris* approaches *Phanæus*, and appears to form an intermediate sub-genus connecting them; it is remarkable for its robust and gibbous form; another peculiarity seems to be the deeply excavated character of the striæ of the elytra. To it are nearly allied *Cop. Monacha*, Fab. *Cop. Eridanus*, Olivier, and also several undescribed species.

SP. 66. *Plutus*.—The specimens of this insect in my collection were named by Fabricius, and were purchased by me at Lee's sale: the labels state them to have been received from the East Indies. The Baron De Jean gives (in his Catalogue) the Cape of Good Hope as its true locality. I am yet inclined, however, to adopt the statement of Fabricius, that it was received from the East.

SP. 85. *Tridens*.—This insect is evidently allied to *Phanæus*. Olivier gives the East Indies and Cape of Good Hope as its true locality, in the former case he is probably wrong, and if right in the latter, *Tridens* should be the type of another genus. *Ph. Tridens* De Jean from Mexico is certainly another insect.

SP. 100. *Scabrosa*.—It is with some doubt that I place this insect as an *Onitis*, but if it belong to that genus, there is evidently some mistake respect-



ing the country: it has never fallen under my notice. The reader is referred to Illiger's Magazine for his remarks on this species.

SP. 104. *Sulcator*.—Schönherr in the *Synonymia Insectorum*, gives the name of *Sulcata* instead of the former. Is this *Sulcata* the other sex of *Copris Nisus* Fab.? if so, both the above names must be abandoned.

SP. 106. *Reflexus*.—This *Copris* appears to be originally from China, although some Entomologists believe it to be a Brazilian insect. It will probably form the type of a sub-genus. There are several species allied to it in the London cabinets, from North as well as South America. It resembles an *Aphodius* in form, but evidently belongs to the *Copridæ*. *C. Nitidula* Klug, and various other South American species may be classed together.

SP. 110. *Cristatus*.—From the description of Fabricius I am inclined to regard this insect as a species of *Scarabæus* MacLeay; it has never fallen under my notice, and probably was unknown to the author of the *Horæ Entomologicæ*, as no mention is made of it.



## 6. ATEUCHUS.

SP. 6. *Sanctus*.—This insect is liable to vary considerably in colour; the green and blue varieties are abundant in various parts of India; the copper coloured variety may be considered rare. It is a question well worth inquiry what is the real cause of the above variations of colours.

SP. 12. *Bacchus*.—This is the type of *Cercellium*, according to Latreille. Mr. MacLeay, however, informs me that *Bacchus* was considered by Illiger as the true type of *Canthon*; a second species allied to it has been figured from my collection, and published under the name of *Cercellium Lyæus*, by Mr. Westwood, it was received from Sierra Leone.

SP. 15. *Hollandiæ*.—The insect which is met with in the French cabinets bearing the above name, is not the same as that in the Fabrician cabinet; there are three or four undescribed species in different collections, and as it appears to offer characters sufficient to form a sub-genus, I suggest the adoption of the term *Tesserodon*, expressing the dentation of the Clypeus, which differs from all the other *Scarabæidæ*.

SP. 21. *Cupreus*.—This appears to be the same insect as the *Onitis Belial*, Fab. which in a former

page I have given as the type of the genus *Anachalcos*.

SP. 24. *Schæfferi*.—The reader is referred to Monsieur Gory's excellent Monograph on *Sisyphus*, where all the species are admirably figured.

SP. 25. *Helwigii*.—I think there can be little doubt that this insect may be considered as a *Gymnopleurus*. The name is omitted by Mr. MacLeay in his Synoptical Table of the Species of *Scarabæidæ*, probably he considered it as a variety only of one of those described in the *Synonymia Insectorum* of Schönherr where it is recorded as an *Ateuchus*.

SP. 30. *Squalidus*.—There must be some mistake respecting this insect, as none of the *Scarabæi* of the Old World have yet been discovered in the New. I am unacquainted with the insect, and range it with *Coprobius* for the present. The genus *Megathopa* of Eschscholtz represents in America the *Scarabæus* of the Old Continent, and is the nearest approximation to it in form. In my cabinet I have three species, and three other additional nondescripts I find noted in my journal as occurring in the German and French collections.

SP. 37. *Bipustulatus*.—It is possible that this insect may belong to the genus *Onthophagus*; but, as the specimen in the Banksian cabinet is not in a

very good state, I defer speaking decidedly till others fall under my notice.

SP. 55, 6, 7, & 8. With none of these insects am I acquainted; the three former are probably Onthophagi, the latter may be a Chæridium.

#### 8. HEXODON.

SP. 1. *Reticulatum*.—I lately purchased a box of insects from the Island of Mauritius, containing two specimens of this anomalous genus; as it appears an undescribed species, I name it in honour of the venerable patriarch of Entomology, the Rev. William Kirby, of Barham, and add the description.

*Hexodon Kirbii*.—Long. lin. 10 lat. lin.  $6\frac{1}{2}$ . Obscurum, thorace nigricanti, elytris cinereis lineis tuberculisque quatuor variegatis.

Caput nigrum, antennis piceis articulo primo piloso, reliquis glabris. Thorax niger opacus utrinque tuberculo lævi variegatus. Elytra cinerea, lineis subelevatis postice reticulatis, fuscis, tuberculisque quatuor lævibus insignita. Corpus infra nigro-piceum nitidum, femoribus concoloribus tibiis tarsisque castaneis. Hæc species celeberrimo Domino Kirby, acutissimo observatori Naturæ dicatur.

## 9. TRICHIUS.

SP. *2-punctatus*.—This insect is the type of Dr. Leach's genus *Popillia*.—I am acquainted with more than forty species belonging to it; apparently those of the New World will form a sub-genus. I strongly recommend these beautiful insects to the attention of Entomologists, as likely to form an elegant and interesting Monograph.

SP. 8. *Bidens*.—In some writers it is called *Bibens*, which is an error of the press.

SP. 16. *Retusus*.—This is the type of Mr. Kirby's genus *Cnemida*. (vide *Zool. Journal*, No. 10, p. 145). The Baron De Jean is probably unacquainted with the other species described and figured in that work by the above author, as mention is scarcely made of them in his various Catalogues.

SP. 19. *Hirtus*.—Probably a *Trichius*? A Monograph ought to contain a notice of all the described species of authors up to the time of its publication. The Monograph of Messrs. Perchéron and Gory however good in some points, is exceedingly deficient in this respect. With regard to Synonyms they occasionally mention the most common. The omission of several Fabrician species renders their work anything but perfect and satisfactory. It is

generally expected that a Supplement to it will shortly make its appearance, when, in all probability, these objections will be remedied.

#### 10. CETONIA.

SP. 1. *Goliata*.—The type of the genus *Goliathus* De Lamarck. Mr. Kirby has applied the specific name of *giganteus* to it, which has been retained by Mr. Westwood in the new edition of Drury's Illustrations. I think the *Goliathidæ* will bear dividing into two groups, the former including those genera which have the anterior and posterior angles of the thorax rounded, and the latter where the thorax is of a trapezoidal form; at the close of the Fabrician Lamellicorns I shall add some additional remarks on *Goliathidæ*, and therefore only allude at present to an insect which Professor Klug of Berlin has named *Goliathus Regius*; I lately received a specimen allied to the last named species from Guinea, and was convinced that it was a female, and I think probably it is the female of *Goliathus giganteus* K.; that it was a female I am enabled to speak positively, as on dissecting it many ova were discovered in the abdomen.

SP. 2. *Cacicus*.—A specimen of this insect is in my possession, it was received from the same loca-



lity as *Gol. regius* of Klug.—Vid. *Reise um die Erde*, by Adolph Erman, published at Berlin in 1835, plate 15, fig. 7,

SP. 3. *Bifrons*.—This insect belongs to Monsieur Serville's genus *Inca*, and seems confined to the New World; there are several recorded species known.

SP. 4. *Polyphemus*.—This insect for many years was considered unique, and was the chief ornament of the Banksian cabinet: it has been stolen from thence by some individual unworthy of the name of naturalist. I regret to state also that a box containing some rare and singular insects (from Sierra Leone and New Holland) has disappeared from my own collection; should a similar occurrence take place I shall be forced to close my cabinet, which it has ever been my wish to render easy of access to the Entomologist. As the insect here above alluded to belongs to a section which has the thorax trapezoidal, I suggest the adoption of the generic term *Mecynorhina* from the Greek words *μηκυνω* and *ρην*, from the clypeus being prolonged into a horn. The following characters will designate the type of form. *Mecynorhina* Hope: “Corpus ovatum, thorax trapezoidal, caput tricorne, medio mergaformi porrecto, bifido, lateralibus minoribus subarcuatis, apice acutis.

Pedes anteriores quatuor posticis longiores, tibiis dentibus armatis, sternoque obtuso producto." To this genus apparently the following species belong, viz. *G. Micans*, Fab. & *G. Daphnis & Grallii*, both of them in the collection of Monsieur Buquet at Paris. The second genus belonging to this section has for its type *Goliathus Hœpfneri* of De Jean, and represents in the New World the group having *Polyphemus* as its type in the Old. I have little hesitation in suggesting this insect as the type of a new genus, and it is to be hoped that the Baron de Jean will shortly publish the characters and name generically, one of the most interesting insects figured in the Monograph above alluded to. The remaining species of *Goliathus*, which have been described by Messieurs Perchéron and Gory as such, belong, according to my views, to *Cetonia*, and approach *Gnathocera* of Kirby, I allude to those which are named *G. Heros*, *Mellii*, and *Opalinus*. The third insect which belongs to this section is the type of a new genus, named *Jumnos Ruckeri*, Saunders, it will appear figured in the next part of the Entomological Transactions. We have then three distinct genera; viz. *Goliathus*, *Dicronocephalus*, and *Inca*, the respective representatives of Africa, Asia, and America, forming the first section, and three others, viz. *Mecynorhina Polyphemus*, *Jumnos Ruckeri*, and *Golia-*



thus Hœpfneri, forming the second section, each of them forming the characteristic type of the quarter of the globe to which they belong.

SP. 6. *Micans*.—I formerly gave the name of *Trigonophorus* to this and some other species of *Cetoniadæ* from General Hardwicke's collection, which appeared to me to afford sufficient characters for a sub-genus; and I still think that *Micans* may be the type of another genus, as the anterior tibiæ of the male are only internally serrated, but in *Mécynorhina* in both sexes they are internally serrated.

SP. 8. *Nigrita*.—By many Entomologists this insect has been regarded only as a variety of *Cet. Chinensis* Fab.; having received it lately from Dar-pouillie, and examined it thoroughly, I give it as a distinct species. The species of *Agestrata* named *Splendens* by Messrs. Perchéron and Gory, has long been in the Linnean cabinet, where it is unnamed. Ten species belonging to this genus have fallen under my inspection. Three undescribed are in the possession of Colonel Whithill.

SP. 13. *Recurva*.—This species is omitted in the Monograph of *Cetoniadæ*; it was originally described from Lund's cabinet.

SP. 22. *Holosericea*, now a *Gymnetis*. The Oriental species of *Gymnetidæ* apparently belong to a sub-genus, they are few in number compared with

those found in the New World. Only eight out of seventy-five described by Monsieur Gory inhabit the Old World; this number may be doubled; five were lately brought to this country by the indefatigable Colonel Whithill above mentioned, whose collection of Coleoptera, as far as relates to the insects of Bombay, the Concan and Ceylon, is certainly unrivalled.

SP. 32 & 33.—These insects probably belong to the Rutelidæ, and perhaps to the genus *Macraspis*, if so the locality of the East Indies must be changed to that of South America.

SP. 40. *Glabrata*.—This insect I have ranged at present as a *Rutela*; it was named by Fabricius from Lee's cabinet: I believe it to be unique, and have some doubts if Oriental India is its true locality.

SP. 42. *Cornuta*.—This singular insect ought to have been made the type of a new genus by Messrs. Gory and Perchéron, it unites apparently the *Cetoniadæ* and the genus *Syrichtus* of Kirby. A second species, closely allied to *Cet. Cornuta* Fab., and considerably larger, I lately received from China.

SP. 54. *Scutellata*.—In the monograph of *Cetoniadæ* repeatedly alluded to, this Fabrician species is made the type of *Macroma*. My friend, Mr.

Kirby, originally gave this name to two species of *Cetonia* from New Holland, allied to *Schizorhina*, the name of one was *Scutellare*, and the similarity of the signification of *Scutellatum* probably led to the mistake.

SP. 58. *Fasciata*.—This insect is certainly a *Cetonia*, and is the same species as *Sc. Alexandrinus* Linn.

SP. 61. *Picta*.—Now a *Macronata* of Hoffmannsegg. It is generally supposed that Wiedemann founded this genus, but erroneously so, as Count Hoffmannsegg first published it in the *Zoologisches Magazin* of Wiedemann, and hence the cause of the error; among the recorded species of *Macronata* two, namely, *Rhinophyllus* and *Inscripta*, appear to afford sufficient characters to allow of being formed into sub-genera.

SP. 70. *4-maculata*.—If *Mecynorhina* is adopted as a sub-genus of *Goliathidæ*, there can be little doubt that *Gnathocera 4-maculata* Oliv. belongs to the same genus, and must therefore be detached from *Gnathocera*, as some other species ought to be.

SP. 72. *Cuprea*.—No mention is made of this species, and indeed, I may add, of several other Fabrician insects in the *Monograph* of *Cetoniadæ*

by Messieurs Perchéron and Gory; it has not yet fallen under my inspection, and I therefore range it with a doubt as a *Cetonia*. Gmelin gives *Sc. venereus* of Linneus as a Synonym.

SP. 80. *Tetradactyla*.—The organs of manducation belonging to this insect are accurately described by Mr. Kirby in his invaluable *Century of Insects*, published in the 12th volume of the *Linnean Transactions*. Vid. tab. 21, fig. 10, a, b, c, d. By some mistake (Mr. Kirby informed me,) the generic characters which properly belong to *Macraspis tetradactyla* were attributed to *Rutela pulchella*. The various species of this genus belong exclusively to the New World. Thirty-five species have fallen under my notice.

SP. 85. *Lunulata*.—This insect has all the appearance of a *Rutela*, and if so, is certainly not a native of Sumatra, but of South America. I am only acquainted with Olivier's figure, (vid. *Cetonia*, 6, 12, 112,) never having seen a specimen in any collection.

SP. 88. *Philippensis*.—This insect is as abundant in China, as *C. aurata* is in Europe; other Asiatic species closely resemble our northern specimens. An interesting example of this occurs in *Cetonia*

marmorata from Japan, sent to me lately by M. De Haan of Leyden; after a rigid examination I feel convinced it is a distinct species; I propose, therefore, to name it in honor of the celebrated Siebold, a very able Naturalist, through whose exertions much light has been thrown on the insects of that country. His Fauna Japonica, now in the course of publication, merits a conspicuous place in the libraries of all Zoologists.

SP. 89. *Stolata*.—By Fabricius this insect is described erroneously as inhabiting New Holland. I believe it to be a native of Africa. My valued friend, Mr. Burchell the traveller, possesses some specimens from Africa (probably from Caffraria) collected by himself.

SP. 92. *Abbreviata*.—This insect is probably a *Cetonia*; no mention is made of it by Monsieur Gory, although it is described by Fabricius from the cabinet of Monsieur Geoffroy of Paris.

SP. 96. *Marmorata*.—According to Illiger this insect is only a variety of *C. mandarina*, in which opinion I concur. *Cetonia marmorata* of Europe is a distinct species, and has been described by various other names.

SP. 99. *Areata*.—In Olivier's work *discoïdo* is placed before the Latin term *areata*, hence it has



been confounded with *C. discoidea* of Fabricius, quite a different species.

SP. 103. *Albopunctata*.—This species occurs in Africa as well as India.

SP. 110. *14-maculata*.—This is *Cetonia cœrulea* Oliv. and *Gymnetis cœrulea* Gory. It is no uncommon occurrence to find the same insect described by Fabricius and Olivier, under different names. Few individuals are perhaps aware of the cause; the former, in his various visits to this country, had access to the Banksian cabinet, and described all the new species which were found in that collection. He next took up his abode with Mr. Lee, of Hammersmith, and also described the novelties of his cabinet. To every insect labels were attached by Fabricius, frequently in his own hand-writing; which was not always the case in the Banksian collection. Olivier on his arrival in London directed his attention to the drawers containing the last arrivals of insects, and figured and described for his grand work many which had previously been designated by Fabricius. It is singular that this insect which came into my possession at Mr. Lee's sale, has the specific name of *C. 14-maculata* attached to it, while a variety of it with the thorax blue, is denominated *C. cœrulea*. The locality of the former

is Eastern India, and of the latter the island of Mauritius, from whence I have received it. Another species from Travancore is closely allied to the above, and in the collections of the Continent other allied species appear confounded under the same name.

SP. 120. *Gloriosa*.—This insect is another example of a species described by Olivier as well as Fabricius; the latter writer has given it the name of *Melolontha Dorcyi*.

SP. 121. *Maura*.—Now a *Cremastocheilus* according to Messrs. Gory and Perchéron. The true type of that genus is *C. Castaneæ* Knoch, an American insect. Perhaps of all the genera of the *Cetoniadæ*, less attention has been paid to this genus by the above writers, than might have been expected. Mr. MacLeay some years back gave the name of *Genuchus* to an African insect described by Fabricius as *Cetonia cruenta*, and Mr. Kirby, in the 14th volume of the *Linnean Transactions*, sometime afterwards detailed the characters. *Genuchus*, as a genus, is closely allied to *Cremastocheilus*, but is evidently distinct; it represents in Africa the *Cremastocheili* of North America. There is also a very marked form which connects in my opinion *Cetonia* and *Genuchus*; I allude to two species



published by M. Gory, viz. *Crem. Maculatus* and *Brahma*, both from the East Indies. Mr. Kirby published in 1826 his remarks on the *C. Castaneæ* of Knoch, and added a new species named *Variolosus*. In 1828 were added also in the *Zoological Journal*, two more species, viz. *Crem. canaliculatus* and *Harrisii*, all four belonging exclusively to North America; it is probable that eventually in South America there will yet be discovered a sub-genus allied to *Cremastocheilus*; at present, however, there appear but three sub-generic forms known, which may be regarded as representing the genus in the different parts of the globe, viz. *Crem. Castaneæ* of North America, *Genuchus cruentus* of Africa, and *Crem. maculatus* of the East Indies. To the future investigator of these most interesting insects I leave the nomination of the sub-genera.

SP. 124. *Cruenta*.—The type of the genus *Genuchus*, M. L. Vid. the generic details in the *Linnean Transactions*, Vol. 14, page 569.

## 11. MELOLONTHA.

SP. 4. *Rorida*—This appears to be the same insect which Olivier has denominated *Mel. Comersonii*.

Sp. 5. *Serrata*.—Now an Holotrichia of Mr. Kirby's manuscripts. There are in the Banksian cabinet two insects labelled with this name; one has the thorax serrated, the other not. Is it a sexual distinction?

Sp. 14. *Alopex*.—This insect is the type of Mr. Kirby's genus *Cephalotrichia*; I am acquainted with two other species from the Cape of Good Hope, *Ceph. vicina mihi*, and *amplexa Klug*.

Sp. 23. *Atriplicis*.—The Baron De Jean in his last Catalogue ranges it under the term *Anisonchus*. In Guerin's *Magasin de Zoologie*, pl. 20, however, it is described and figured under the name of *Hoplopus Laporte*, from *οπλος* and *πους*; as the characters are detailed, I consequently retain the latter name.

Sp. 26. *Lanigera*.—This insect belongs to the genus *Areoda* Leach; there are about twelve species in the different Continental collections with which I am acquainted.

Sp. 27. *Longicornis*.—This species will form the type of a new genus allied to Mr. Kirby's *Cephalotrichia*. In my collection there are four species, which I have named, *Robusta*, *Boei*, and *Klugii*; there are others in the collection of Mr. Burchell, all of which inhabit Africa.

SP. 28. *Punctata*.—Belonging to Mr. W. Sharpe MacLeay's genus *Pelidnota*. About ten species are mentioned in De Jean's Catalogue, but double that number will be found in different collections. The genus *Chrysina* Kirby, published in the *Zoological Journal* appears to unite *Pelidnota* with *Scarabæus Macropus* Francillon.

SP. 29. *Viridis*.—The type of *Euchlora* MacLeay. In my collection there are twenty species. The French writers seem to confound *Mimela* Kirby with *Euchlora* M.L. *Chrysea* of Kollar, which is mentioned by De Jean, belongs to the former genus.

SP. 30. *Æneus*.—Type of Dr. Leach's genus *Repsimus*; there are four species known.

SP. 31. *Suturalis*.—Now the type of a new genus, which I have named *Stethaspis*.

SP. 32. *Bicolor*.—The native country of this insect is stated by Fabricius to be the Cape of Good Hope; this is erroneous, as it is only met with in the East Indies. The species of *Euchlora* are more numerous than in the allied genus *Mimela*.

SP. 35. *Morio*.—I have added a mark of interrogation to this species, being doubtful if it really belongs to the genus *Chalepus*; according to Illiger, *Melolontha Hottentotta* is the same insect.

SP. 37. *Rufipennis*.—This insect is unknown to

me; I have ranged it as a *Cyclocephala*, merely from the description.

SP. 40. *Glacialis*.—This species I propose as the type of the genus *Macrosoma*; to it belong most probably *Mel. lurida* in the Tunstall cabinet, as well as *M. striata* and *testacea* of Fabricius. Mr. Tunstall's collection at his death went into the possession of Mr. Allan, and was the nucleus of the Entomological Cabinet of the present Newcastle museum.

SP. 43. *Tristis*.—This insect was received from North America, and described from Mr. Blackburn's cabinet at Warrington. I have not been able to ascertain in what state of preservation that collection is at present. It has not yet been dispersed; and as it is an authentic cabinet, and was named in early days, it may be the means of making us acquainted with several unknown Fabrician insects.

SP. 45. *Hirticollis*.—This insect is unknown to me, although described from Vahl's cabinet. The Gmelin edition of the *Systema* of Linneus, page 1569, sp. 300, merely adds, that in size it approaches *Sc. fuscus*.

SP. 47. *Ruficollis*.—There are two species in the Banksian collection ticketed with this name. Schönherr in a note attached to this species, seems

in doubt to what family of Melolontha to refer it ; of course to attempt to assign the right genus would on my part be presumption.

SP. 48. *Quadridens*.—This insect was described from Hybner's cabinet ; no notice is made of it in Illiger's Magazine.

SP. 49. *Variolosa*.—This insect is in my collection, and was purchased at Lee's sale. It appears to belong to the Baron De Jean's magazine genus Schizonycha, which comprehends under it various forms of Melolonthidæ. The characters are not yet published, and the name will therefore not stand. Schiz. Brasiliana appears to be the type of the genus Rhinaspis of Spix and Martius. Vide Delect. Anim. Art. Bras. pl. 10, fig. 1, Rhinaspis Schrankii.

SP. 54. *Brunnea*.—The type of Mr. MacLeay's genus Serica ; as there are several subgenera belonging to this genus, I consider the Sericidæ a distinct family. Monsieur Laporte, in Guérin's Magasin de Zoologie, has detached various species from Serica, and formed from them a new genus, denominated Trochalus. He possesses four species, all from Senegal. In my collection there are nine, and many others will be found in our metropolitan cabinets. They appear to belong exclusively to

Africa and its adjacent islands ; some few species are met within Madagascar. *Mel. gibba*, *lineata*, and *picea* described by Fabricius belong to this genus *Trochalus*.

SP. 58 *Erythrocephala*.—Belonging to the genus *Apogonia*, Kirby. The founder of this well characterized genus doubts the country to which the type belongs. I give my opinion that it inhabits the East Indies, as there are several species allied to it in my collection from Madras and Singapore. Three were described by me from General Hardwicke's collection, viz. *Apogonia nigricans*, *ænes-cens*, and *brunnea*. Vide page 23, of the Zoological Miscellany.

SP. 62. *Rufa*.—This singular insect appears to be a form well worthy of being made the type of a new genus. It is in the Banksian cabinet.

SP. 63 & 64. *Festiva*.—Mr. MacLeay in the Appendix to Captain King's Narrative of a Survey of the Coasts of Australia, justly considers this insect as the type of a new genus allied to *Serica*. I suggest the adoption of the term *Calonota*, to include all the Hydrobiiform Sericidæ. They seem to be peculiar to New Holland. Vide the details of the genus in the concluding part of this Fasciculus among the new genera.



SP. 65. *Holosericea*.—Type of the genus *Rhombonyx* Kirby, a second species allied to the above I have lately received from Macao in China.

SP. 69. *Vitis*.—Fabricius seems to think that in America this species is the same as that which is found on the European vine. It is scarcely possible that the larvæ could have been transported thither in the cuttings or plants imported into that country. A question then arises as to the identity of species; some Entomologists of the present day assert that all American insects differ from those of Europe. My observations lead me to think that this is not always the case; leaving the question still open for future discussion, I merely remark that it matters little in which way the question is eventually determined. In both cases we shall have to look to a higher and more interesting subject of enquiry, viz. the functions committed to the several types of form by an allwise and provident Creator. In both instances, whether we consider these insects as distinct or the reverse, that is, as species or varieties of species, we must still regard them as the representatives of their respective countries.

SP. 71. *Cardui*.—Now of the genus *Glaphyrus* Lat. which has very properly been formed into a



family by Mr. MacLeay: the genera composing it require a thorough investigation.

SP. 73. *Fastuosa*.—Now of the genus *Mimela* Kirby; for the species of this genus the reader is referred to a Monograph in the first volume of the Entomological Transactions, page 116, where fourteen are enumerated. I have lately received from the Nilgherry mountains an undescribed species, which I have named *Mimela Xanthorhina*. Vide the description at the end of the newly indicated genera.

SP. 82. *Mærens*.—This insect was described from the cabinet of Dom. Rohr, which, if I am not mistaken, along with Sehestedt's and Lund's, are added to the Royal Copenhagen collection. I am unable to give any information respecting this species.

SP. 84. *Aulicola*.—This singular insect will probably form the type of a new genus. The clypeus is remarkable, and differs from any of the published genera of my acquaintance.

SP. 37. *Arboricola*.—Probably an *Anisoplia*. *Melolontha nitidula* Oliv. appears to be the same species as the above. It is questionable, however, if *M. nitidula* Fab. is the same as *M. nitidula* of Olivier.

SP. 98. *Atomaria*.—Now the type of the genus

Gymnoloma De Jean. I am not aware of its characters being published; it appears to afford sufficient grounds for the establishment of a new genus.

SP. 98. *Chrysomelina*.—Now the type of Megerle's genus Ochodæus.

SP. 110. *Cincta*.—*Melolontha marginata* of Olivier is apparently the same as that insect described as *Cincta* by Fabricius.

SP. 122. *Morio*.—It is with doubt that I add the generic name of *Anisoplia* to this species. Can this insect be *Anisoplia atra* of Count Jenisson's Cabinet?

SP. 129. *Variabilis*.—Probably under this name more than one species is confounded. The *Sericidæ* of North America are certainly different from our European species, although they greatly resemble them.

SP. 147. *Meles*.—The specific name is usually printed *Melis*, probably a typographical error.

## 12. LUCANUS.

SP. 7. *Femoratus*.—Several species allied to *Lucanus femoratus* from South America are remarkable for their form, the head being large and nearly square, with the sides straight. The body is much depressed, having the base of the elytra considerably wider than at the apex. This form

appears to be peculiar to the New World. The clava of the antennæ has only three lamellæ.

SP. 14. *Acuminatus*.—Now an *Ægus* of Mr. MacLeay. The reader is referred to the *Horæ Entomologicæ* for the generic characters of this group, the species belonging to it are numerous. It is singular that the Baron de Jean still considers this insect as a *Dorcas*, although he has adopted other genera from the above writer. He appears to have omitted noting this well defined form; all the species known at present belong to Asia or New Holland.

SP. 18. *Cancroides*.—Now a *Dorcas*, according to Megerle; this singular insect will, however, at some future time, be the type of a distinct genus.

SP. 19. *Lunatus*.—From the description given by Fabricius, I rank this species as an *Ægus*. It has never fallen under my inspection.

SP. 20. *Piceus*.—Now a *Ceruchus* MacLeay; Megerle gave the Plinyan name of *Tarandus*, as a generic one, to include the European species named *Tenebrioides* and *Silesiacus*. I prefer, however, that of *Ceruchus* M.L., as the former is only a catalogue name, and the details of the genus having also been first published by Mr. MacLeay, is the reason I retain it. *Lucanus Quercus* Knoch apparently belongs to this genus.

SP. 22. *Striatus*.—This insect forms the type of Mr. W. Sharpe MacLeay's genus *Figulus*; he states that it occurs\* in the East Indies and in the Island of Bourbon. It may here be remarked, that Madagascar and the Islands of Mauritius and Bourbon (which, geographically, may be considered as connected more intimately with Africa than Asia) appear in the entomological character of their genera to unite the insects of the two continents. They possess, however, types of form, which seem (as far as I have yet had an opportunity of judging) peculiar to these islands. I am exceedingly anxious to ascertain, if any traces of deviation from typical forms of the insects of the African continent have been observed in the smaller islands on the coast of the Red Sea. It is probable that a slight deviation in these localities may be observed. To this genus belong *Fig. ebenus* of Klug from Madagascar, *F. Ovis* D. J. from Senegal, and also *F. regularis* of Westwood from New Holland. The genus appears to be confined in its range to Africa, Asia, and Australia.

SP. 23. *Caraboides*.—The type of the genus *Platycerus* of Latreille, *Lucanus rufipes* Fab. is perhaps only a variety of *Pl. caraboides*. I possess a second species from North America, which belongs

to the same genus, and appears to agree with the description of *Lucanus virescens* Fab., a species omitted in the later works of Fabricius, being first described in the Appendix to the *Systema Entomologica*, p. 817. From a manuscript reference made by Dr. Latham to Francillon's drawings, I was led to infer this, as he states the size of the insect as nearly three-quarters of an inch.

SP. 25. *Punctatus*.—Now a *Figulus* MacLeay. The Baron De Jean includes under this term *Lucanus cylindricus* of De Haan, which insect is the type of Mr. Westwood's genus *Cardanus*.

### 13. *ÆSALUS*.

SP. 1. *Scarabæoides*.—The only species known of the genus. The remarkable insect named *Codocera* by Eschscholtz (which is the same as *Stomphax* of Fischer) seems to connect *Æsalus* with *Ceruchus* and *Sinodendron*. For a better acquaintance with the genera of *Lucanidæ*, the student is referred to Mr. Westwood's *Synoptical Tables of the Lucanidæ*, published in the *Annales des Sciences Nat.* 2 series, Zool. tome 1, pl. 7, as well as Mr. MacLeay's observations on this magnificent family in the *Horæ Entomologica*.

## 14. PASSALUS.

SP. 7. *Minutus*.—Monsieur Perchéron in his valuable Monograph has apparently omitted to notice *Passalus minutus* of Fabricius. A dissertation on the genus *Passalus* will also be found in the Mem. de la Soc. Imp. des Nat. de Moscou, t. 7, ou Nouv. Mem. t. 1, p. 13—18, by the celebrated Eschscholtz.



FAMILY. DYNASTIDÆ, *MacLeay*.

GENUS. MEGACERAS, *Kirby*.

*Type of the Genus.* GEOTRUPES CHORINÆUS, *Fab.*

*Caput* in mare unicorne, cornu simplici, apice bifido, antice convexo, postice canaliculato.

*Mandibulæ* validæ apice bilobæ, basi dilatatæ intus subciliatæ.

*Maxillæ* unguulatæ, interne inermes.

*Palpi maxillares* 4-articulati articulo 1<sup>mo</sup> brevi, 2<sup>do</sup> longiori suboblongo, 3<sup>tio</sup> obconico, extimo elongato-ovato subtruncato.

*Mentum*\* subtrigonum apice truncato basi paullo angustiori.

*Labium* obsoletum vel internum.

*Palpi labiales* 3-articulati articulis duobus primis obconicis, ultimo longiori apice attenuato.

*Antennæ* 10-articulatæ, articulo 1<sup>mo</sup> basi angusto, apice crassiori, sequentibus sex fere moniliformibus, clava subovata trilamellata.

*Corpus* oblongum.

*Thorax* postice abdominis latitudine, e basi antice

---

\* Labium, Kirby, in Linnean Transactions.



valde elevatus, apice late emarginato, seu in cornua bina porrecta producto. Fœmina adhuc latet.

To this genus also belongs an undescribed species, which Mr. Kirby has named Meg. Chori-nellus. It will be found in the cabinet of the Entomological Society of London.

GENUS. ENEMA, *Kirby*.

*Type of the Genus.* GEOTRUPES ENEMA, *Fab.*

*Caput* in utroque sexu unicolore, apice bifido seu simplici, cornu antrorsum et retrorsum convexo.

*Mandibulæ* bilobæ basi dilatatæ, apice fortiter bifido.

*Maxillæ* apice 3-unguiculatæ dente extimo longiori.

*Palpi maxillares* 4-articulati 1<sup>mo</sup> articulo trigono 2<sup>do</sup> fere triplo longiori 3<sup>to</sup> cylindrico, ultimo duobus præcedentibus vix longitudine æquali, elongato-ovato, apice attenuato ovato et truncato.

*Mentum* subtrigonum vel conicum apice simplici.

*Palpi labiales* 3-articulati articulis duobus primis obconicis, tertio longiori ovato.

*Antennæ* fere ut in *Megacerate*, *Kirby*.

*Thorax* in utroque sexu unicornis, aut bifidus,

cornu e medio disci surgente, curvato et apice deflexo.

*Corpus* oblongum, elytris in medio thorace parum latioribus.

Mr. Kirby takes the Fabrician specific name of *Enema* as a generic one, and applies to the type of the genus that of *Infundibulum*. To *Enema* belong the following species, viz. *Geot. Pan* and *Quadri-spinosus* of Fabricius, *Sc. Æneas* of Kirby, and an insect which in my collection has attached to it the manuscript name of *Monachus*, D. J. ? According to Monsieur Lacordaire both sexes of this genus have the thorax armed with horns.

GENUS. CHEIROPLATYS,\* *Kirby*.

*Type of the Genus.* GEOTRUPES TRUNCATUS, *Fab.*

*Caput* triangulare clypeo antice truncato reflexo.

*Mandibulæ* robustæ antice conicæ, hirsutæ.

*Maxillæ* apice 3-dentatæ, dente extimo truncato.†

*Palpi Maxillares* 4-articulati articulo 1<sup>mo</sup> angusto

---

\* From *χειρ*, manus, and *πλατυς*, latus.

† In some specimens dissected the external tooth was as large as the two others, and of similar form.

minuto, 2<sup>do</sup> suboblongo, 3<sup>uo</sup> obconico, ultimo scalpiformi.

*Mentum* elongato-conicum apice rotundatum.

*Palpi labiales* articulo ultimo majori scalpiformi.

*Corpus* fere oblongum elytris thorace parum latioribus.

*Thorax* maris retusus, cornutus, cornu breve in ipso margine antico, feminae convexus, inermis.

*Pedes* breves validissimi, tibiis anticis ♂ externe bidentatis, quatuor posticis femoribus incrassatis, tibiis fere ut in *Temnorhyncho* Hope, binis foliaceis uncis instructis.

This remarkable form seems peculiar to New Holland, where it appears to be the representative of the African genus *Temnorhynchus*. It is worthy of remark, that the males have only two calcaria on the tibiae, while the females have three. *Cheiroplatys* De Jeanii, and *Gibbosus* of Hope, and *Ch. Juvencus* of Mr. Kirby's cabinet, belong to this genus. They are all from New Holland. The figures of the *Trophi* of this genus were made from Mr. Kirby's dissection of a specimen of *Ch. Juvencus* in the collection of the Entomological Society.

GENUS. CHALCOSOMA, *Hope.*

*Type of the Genus.* GEOTRUPES ATLAS, *Fab.*

*Caput* unicolorne cornu reflexo postice dentato clypeo bifido.

*Mendibulæ* basi dilatatæ apice falcatae acutæ.

*Maxillæ* elongatæ lobo tenui subacuto, valde hirsutæ.

*Palpi maxillares* 4-articulati, 1<sup>mo</sup> brevi minimo, 2<sup>do</sup> crassiori oblongo 3<sup>io</sup> obconico ultimo ovato producto, duobus præcedentibus longiori.

*Mentum* elongatum sensim attenuatum apice paullo angulariter dilatatum et subemarginatum.

*Palpi labiales* 3-articulati duobus primis articulis obconicis, extimo elongato ovato apice subtruncato.

*Corpus* crassissimum, abdomine thorace latiori.

*Thorax* tricornis cornu medio brevissimo, cornibus lateralibus elongatis porrectis.

*Femora* antica unidentata.

I am inclined to think from the examination of many specimens that both sexes may have the thorax cornuted; the species therefore which I described from the collection of General Hardwicke, form a subgenus closely allied to *Chalcosoma*; the femora of the latter are without the prominent tooth so

conspicuous in Atlas, Hesperus, Caucasus and Chiron.

GENUS. STRATEGUS, *Kirby*.

*Type of the Genus.* GEOTRUPES ALÆUS, *Fab.*

*Caput* fere trigonum apice truncatum vix emarginatum fronte antice tuberculis seu dentibus armato.

*Mandibulæ* validissimæ, apice truncatæ 2-dentatæ dente interno minori, externo obtuso.

*Maxillæ* ♀ apice 8-spinosæ et ♂ 5-spinosæ subtus hirsutæ.

*Palpi maxillares* 4-articulati, 1<sup>mo</sup> oblongo, 2<sup>do</sup> fere triplo longiori, 3<sup>tio</sup> obconico, 4<sup>to</sup> tribus præcedentibus æquali, elongato, apice truncato.

*Mentum* subtrigonum antice dilatatum apice rotundatum.

*Palpi labiales* 3-articulati, articulo 1<sup>mo</sup> sequenti longiore, 2<sup>do</sup> minori obconico, ultimo elongato-ovato apice attenuato.

*Corpus* crassum.

*Thorax* tricornis, cornu intermedio longiori, lateralibus compressis.

Strategus differs from the genus Megaceras, which has both sexes cornuted, there is however an

approximation to the latter in several species of *Strategus*, which are armed with a short horn or tooth on the anterior part of the thorax, as well as with lateral tubercles. Both sexes have the front of the forehead bituberculate. There are several species belonging to this genus, viz. *Sc. Semiramis* of Palisot Beauvois, and probably also *Sc. 4-foveatus* and *oblongus* of the same author. *Sc. Recticornis* Kirby, may be added, as well as *Geot. Antæus* Fab. *Geot. Ænobarbus*, *Syphax* and *Titanus* of Fabricius, *Massinissa* of Kirby, and *Ajax* of Olivier, belong to the same genus; they have the intermediate thoracic horn furcate and deeply emarginate at the apex. In two remarkable insects in my collection, which I have named *Montesuma* and *Pizarro*, closely approaching *Strategus*, the lateral horns are furcate, the intermediate one is nearly evanescent, it is probable that the former belongs to a subgenus as the mouth is different, and the anterior tarsi quite anomalous.

GENUS. *CÆLOSIS*, Kirby.

*Type of the Genus.* *GEOTRUPES SYLVANUS*, Fab.

*Caput* triangulare, cornu recurvo clypeo emarginato.



*Mandibulæ* in utroque sexu validissimæ, quadratæ apice 3-dentatæ, dentibus subæqualibus.

*Maxillæ* graciles apice acutæ dentibus duobus minutis sub apice armatæ, margine externo versus basin tuberculo conico, (in mare majori) instructæ.

*Palpi maxillares* 4-articulati, articulo 1<sup>mo</sup> minuto breve, duobus proximis brevibus obconicis, extimo valde elongato-ovato apice truncato.

*Mentum* conicum apice truncatum vix emarginatum.

*Palpi labiales* 3-articulati et fere ut in *Stratego* Kirby.

*Corpus* oblongum, elytris thorace parum latioribus.

*Thorax* retusus prominentia variabili insignitus.

*Pedes* mediocres calcaribus acutis.

To this genus belong *Geot. bilobus* Fab. and *C. Vesputius* Hope. Monsieur Serville seems to attach much importance to the sutural striæ as marking some of the genera of *Dynastidæ*; the striation in the above genus is certainly remarkable. As a generic distinction, however, much weight cannot be given to it.

GENUS. XYLORYCTES, *Hope*.

*Type of the Genus.* GEOTRUPES SATYRUS, *Fab.* ♂

*Caput* unicorne, cornu simplici recurvo, clypeo dentibus acutis armato.

*Mandibulæ* apice oblique truncatæ, seu margine interno obliquo, membrana setosa interne instructæ.

*Maxillæ* 3-unguiculatæ dentibus internis minoribus, apicali acuto.

*Palpi maxillares* 4-articulati articulo primo cylindrico, 2<sup>do</sup> crassiori suboblongo, 3<sup>tio</sup> obconico, ultimo elongato truncato.

*Mentum* subtrigonum basi angustiori lateribus rotundatis, apice truncatum.

*Palpi labiales* brevissimi 3-articulati duobus primis subtrigonis, tertio longiori ovato.

*Corpus* oblongum crassum.

*Thorax* inermis truncatus et declivis.

Femina thorace antice convexo, capite postice corniculo armato.

This genus is closely allied to *Oryctes* of Illiger. An insect sent to me from the United States, by Monsieur Leconte, under the name of *Satyrus*, differs from the species in the Fabrician Cabinet. I propose, therefore, to give to this second species the

name of that indefatigable and zealous entomologist. *Geot. Jamaciensis* Fab. belongs to the same genus, and there are several others from South America and the West India Isles, which might be added, the greater part of which are undescribed. Mr. Kirby in his manuscripts proposed the name of *Orycter* to include the above species, but as the name is very similar to that of *Oryctes*, I have substituted that of *Xyloryctes*, from *Ξυλον* lignum et *ορυσσω* fodio.

GENUS. *SYRICHTUS*, *Kirby*.

*Type of the Genus.* *GEOTRUPES SYRICHTUS*, *Fab.*

*Trophi* fere ut in genere *Phileuro*, palporum articulo extimo minus cylindrico.

*Caput* unicorne, cornu simplici recurvo, clypeo retuso.

*Mandibulæ* validæ extus in lobum rotundatum productæ apice subtruncato margine interno sub apice inciso, subtus lanuginoso.

*Maxillæ* elongatæ, lobo apicali dentibus tribus magnis acutis subæqualibus armato, dente infimo plano 3-denticulato.

*Palpi maxillares* elongati articulo basali minimo, tertio obconico. 2<sup>do</sup> et 4<sup>to</sup> longitudine fere æqualibus.

*Mentum* suboblongum lateribus convexis apice valde emarginato.

*Palpi labiales* minuti articulis duobus basalibus brevissimis, 3<sup>to</sup> longiore.

*Corpus* oblongum subtus pilosissimum.

*Thorax* fere semicircularis, inermis.

*Tibiæ* quatuor posticæ pectinatæ.

*Tarsi* quatuor postici haud articulo 1<sup>mo</sup> producto.

*Pedes* anteriores unguibus inæqualibus.

Mr. Kirby has given the term *Syrichtus* as a generic name, to include those insects allied to this very remarkable form. The genus *Heteronychus*, De Jean, (of which I possess a species named *Het. Licas*, from Professor Klug of Berlin) in its general appearance seems evidently distinct.

To this genus the following species may be added, viz. *G. Aries*, Fab. as well as a new undescribed species from the island of Mauritius, which may, therefore, be named from that locality *Mauritianus*.

GENUS. PENTODON, *Kirby*.

*Type of the Genus.* GEOTRUPES PUNCTATUS, *Fab.*

*Caput* trigonum tuberculatum.

*Mandibulæ* validæ 3-lobatæ, lobis latis obtusorotundatis, externe hirsutæ, interne lanuginosæ.

*Maxillæ* apice quinque-dentatæ, dente medio minori.

*Mentum* 3-angulare apud palpos constrictum, apice truncatum antrorsum subconvexum.

*Palpi maxillares* 4-articulati, articulo 1<sup>mo</sup> brevi, 2<sup>do</sup> fere oblongo, 3<sup>tio</sup> obconico, extimo elongato ovato.

*Palpi labiales* fere ut in Syrichto, Kirby.

*Corpus* crassum valde convexum elytris thorace latioribus.

*Thorax* in utroque sexu muticus.

*Pedes* antici 6-denticulati, dentibus ternis prominentibus ternisque aliis minoribus obtusis.

This genus seems confined to Europe, as far as I am able to ascertain at present; Geot. Monodon, Fab. pertains to it. Scarabæus Monodon of De Haan from the island of Java evidently belongs to another genus, although in external appearance it closely resembles the Fabrician species.

GENUS. TEMNORHYNCHUS, *Hope*.

*Type of the Genus.* GEOTRUPES RETUSUS, *Fab.*

*Caput* retusum antice elevatum apice subemarginatum facie recte truncata.

*Mandibulæ* subtrigonæ apice conicæ edentatæ.

*Maxillæ* 2-dentatæ dente exteriori subobtusio  
interiori bifido subtus hirsutæ.

*Palpi maxillares* 4-articulati articulo 1<sup>mo</sup> brevis-  
simo, 2<sup>do</sup> triplo longiori cylindrico, 3<sup>io</sup> obconico,  
extimo elongato ovato.

*Mentum* suboblongum antice paullo angustius  
emarginatum.

*Palpi labiales* 3-articulati duobus primis articulis  
subtrigonis, 3<sup>io</sup> ovato apice conico.

*Corpus* crassum.

*Thorax* muticus antice parum retusus.

*Femora* bina antica complanata, posteriora qua-  
tuor multo incrassata inflata.

*Tibiæ* posticæ latæ 2-carinatæ, apice calcaribus  
duobus foliaceis instructæ.

*Tarsi* breves hirsuti, 1<sup>mo</sup>. articulo reliquis latiori.

This singular insect was originally named *G. re-  
tus* by Fabricius; it was re-described by Palisot  
Beauvois under the name of *Scarabæus Diana*, from  
the kingdom of Oware in Africa. He appears to  
have confounded it with *Geotrupes Coronatus* Fab.  
which occurs in Java, and is a distinct species,  
although belonging to the same genus. *Callicnemis*  
*Latreillii* of Laporte seems to be distantly related  
to *Temnorhynchus*. I am enabled to add two un-



described species to the above remarkable type— one, viz. *Temnorhynchus Isidis* Hope, from the Cape of Good Hope, and *Tem. Ritchii*, collected in the Soudan, and sent to this country by the unfortunate traveller. Ritchie. Mr. Kirby in his MSS. gave it the generic name of *Pachypus*, and the Baron de Jean in his Catalogue adopts the term *Coptorhinus*; both names however must be changed, as they are previously used by other writers, for other genera of Lamellicorn beetles.

GENUS. *BOTHYNUS*, Kirby.

*Type of the Genus.* *GEOTRUPES CUNICULUS*, Fab.

*Caput* mediocre, inerme clypeo triangulari apice bifido.

*Mandibulæ* subquadratae dentibus tribus validissimis acutis armatae, intermedio majori dorso rotundatae, intus ciliatae.

*Maxillæ* elongatae apice edentulo, setigero, *palpi maxillares* mediocres, articulo 1<sup>mo</sup> brevi basi angusto, 2<sup>do</sup> crassiori et paullo longiori, 3<sup>tio</sup> minori conico, 4<sup>to</sup> reliquis fere longiori subcylindrico.

*Mentum* subtrigono-conicum basi angustius.

*Palpi labiales* brevissimi 3-articulati articulis duobus basalibus obconicis, 3<sup>tio</sup> ovato.

*Corpus* oblongum subconvexum, thorace elytris vix augustiori.

*Thorax* transversus lateribus rotundatis, disco antice valde impresso, denteque tuberculiformi in medio marginis antici armatus.

*Elytra* striato-punctata striis e sutura 3, 4, et 5, 6, approximatis ad apicem elytrorum haud extensis.

*Pedes* breves, incrassati, *tibiæ anticæ* extus 3-dentatæ. *Tarsi* antici ungue interno majori angulato bifido.

To this genus belongs also *Bothynus Ascanius* Kirby, from Brazil, which appears to be related to *Geotrupes Zoilus* Fabr.

GENUS. ISODON, Hope.

*Type of the Genus.* G. AUSTRALASIÆ, Kirby.

*Corpus* ovatum convexum elytris præsertim pone medium thorace latoribus.

*Caput* parvum, transversum, inerme clypeo acuminato acumine truncato subreflexo.

*Mandibulæ* triquetro-trigonæ incurvæ intus dente parvo obtuso armatæ.

*Maxillæ* breves apice oblique truncatæ dentibus

4 acutis armatæ; *palpi maxillares* articulo extimo ovato precedentibus duobus longitudine subæquali.

*Mentum* subacuminatum basi angustius valde setosum.

*Palpi labiales* brevissimi articulo ultimo maximo inflato-ovato.

*Thorax* inermis elytris angustior, postice latior.

*Elytra* brevia valde convexa, punctato-striata.

*Pedes* mediocres. *Tarsi* postici graciles.

*Tibiæ anticæ* tridentatæ dente extimo longiori.

ISODON AUSTRALASIÆ. Piceo-niger, nitidus, thorace punctatus, elytris piceo-castaneis, rugoso punctato-striatis, corpore subtus pilis fulvis obsito pedibusque castaneis. Long. corp. lin. 7. Habitat in Australasia, In Mus. Soc. Ent. London. (olim Kirbii.)

FAMILY. MELOLONTHIDÆ, *MacLeay*.

GENUS. LEPIDIOTA, *Kirby*.

*Type of the Genus.* MELOLONTHA STIGMA, *Fab.*

*Caput* cum oculis transversum, clypeo rotundato submarginato reflexo.

*Antennæ* 10-articulatæ, articulo primo crasso, barbato, reliquis articulis sicut in *Eucirro*, 7.<sup>mo</sup> pateræformi.

*Palpi maxillares* 4-articulati, articulo extimo semiovato.

*Mentum* in medio excavatum utrinque gibbum.

*Prosternum* verticale trigonum intus ad basin pedum anticorum extensum.

*Mesosternum* inter pedes intermedios prominens.

*Unguiculi* medio dente armati.

*Corpus* oblongo-ovatum cinereo squamosum.

*Cubitus* 2-dentatus dente externo elongato.

This genus appears to differ from *Eucirrus* chiefly in the following points: In the number of the teeth of the interior tibiæ, in the shortness of the maxillary palpi, in being entirely covered with a squamous clothing, which is absent in the former, and in other minor points. The species are numerous, and seem confined to Asia and Africa, with their adjacent Isles. *Mel. Rorida* and *Tomentosa* of *Fabricius*, and *Mel. Calanus* and *Rafflesii* of *Hope*, all from the East Indies, belong to this sub-genus.

HOLOTRICHIA, *Kirby*.

*Type of the Genus.* MELOLONTHA SERRATA, *Fab.*

*Caput* transverso-oblongum, postice prominens, clypeo apice elevato emarginato.

*Antennæ* 10-articulatæ capitulo triphyllo articulis intermediis subarcuatis, 6 et 7 pateræ-formibus.

*Palpi maxillares* articulo externo oblongo.

*Cubitus* 3-dentatus.

*Calcaria* dilatata arcuata vel falciformia.

*Corpus* postice dilatatum supra molliter villosum subtus villosissimum.

*Thorax* (in uno sexu?) lateribus crenulatus.

*Pedes* villosi.

To the above type belong various oriental species, viz. *Mel. Polysticta* and *Obtusa* of De Haan, *Mel. Serricollis*, *Picicollis* and *Coriacea* of Hope, as well as *Pruinosa* of Wiedemann, and at least a dozen other nondescripts in my collection. In the Bankian Cabinet there are two specimens named *Mel. Serrata*; one with the thorax serrated, the other not; and as in other respects the insects perfectly resemble each other, probably it is only a sexual distinction.

LACHNOSTERNA, *Hope*.

*Type of the Genus.* MELOLONTHA FERVIDA, *Fab.*

*Caput* antice rotundatum clypeo emarginato reflexo.

*Antennæ* 10-articulatæ, articulo 1<sup>mo</sup> clavato 2<sup>do</sup> oblongo, tribus sequentibus subturbinatis 6<sup>to</sup> et 7<sup>mo</sup> subpateræ-formibus, clava 3-phylla.

*Labrum* transversum carinatum, carina arcuata.

*Mandibulæ* triangulares supra concavæ latæ.

*Palpi maxillares* 4-articulati articulo externo semiovato.

*Prosternum* breve elevatum utrinque subcornutum.

*Corpus* elongato-ovatum, elytris a basi ad apicem sensim magnitudine crescentibus.

*Abdomen* infra et supra glabrum, pectus villosum.

*Cubitus* 3-dentatus.

*Ungues* profunde bifidi laciniis divergentibus.

To the above genus belong *Mel. Quercina*, *Quercicola* and *hirticula* of Knoch. *M. pilosicollis*, however, of the same author, belongs to a different subgenus.



## GENUS. APLIDIA, Kirby.

*Type of the Genus.* MELOLONTHA TRANSVERSA, Fab.

*Corpus* cylindricum.

*Clypeus* supra reflexus submarginatus.

*Labrum* 2-lobum vel medio excavatum.

*Antennæ* 10-articulatæ, 7<sup>mo</sup> pateræformi.

*Palpi maxillares* articulo extimo lanceolato supra excavato.

*Cubitus* subtridentatus dente superiori fere obsoleto.

*Tarsi* filiformes, unguiculis longuisculis apice fissis.

If *Melolontha Solstitialis* Fab. is considered as the type of *Rhisotrogus*, it is evident at one glance that *Mel. transversa* differs from it materially in form, as in various other minor points. The species seem peculiar to the South of Europe and Asia Minor.

GENUS. CEPHALOTRICHIA, *Kirby*.

*Type of the Genus.* MELOLONTHA ALOPEX, *Fab.*

*Caput* clypeo reflexo emarginato.

*Antennæ* 10-articulatæ caule 4-articulato, clava hexaphylla.

*Palpi maxillares* articulo extimo lanceolato-ovato supra excavato.

*Labrum* sinu profundo excavatum.

*Occiput* hirsutum.

*Caput, thorax et corpus* infra pilis densissimis hirta.

*Elytra* glabra.

*Cubitus* 3-dentatus.

*Unguiculi* dentati.

This singular insect inhabits the Cape of Good Hope ; other species allied to it are spread over the warmer parts of those regions. It might naturally be supposed that insects in warm climates would have less clothing than those of northern ones. It will be found, however, on examination, that this is very far from being a general rule, as many genera sufficiently attest. *Mel. Crnicollis*, Hope, and *2-fasciata*, Hope, belong to this genus.

GENUS. MACROPHYLLA, *Hope*.

*Type of the Genus.* MELOLONTHA LONGICORNIS,  
*Hope*.

*Caput* rotundatum clypeo reflexo haud emarginato.

*Antennæ* 10-articulatæ caule 5-articulato, articulo 5<sup>to</sup> clavæ dimidii longitudine, clava pentaphylla elongata.

*Palpi maxillares* articulo extimo lanceolato, seu elongato-ovato apice acuto, supra excavato.

*Labrum* 2-lobum seu medio fortiter excavatum.

*Corpus* subcylindricum ovatum.

*Thorax* subtus pilosus.

*Abdomen* glabrum pectore hirsutissimo.

*Cubitus* 3-dentatus.

*Tarsorum Ungues* denticulo basali.

To this genus belongs *Melolontha robusta* of Klug.

GENUS. STETHASPIS, *Hope*.

*Type of the Genus.* MELOLONTHA SUTURALIS, *Fab.*

*Caput* clypeo integro reflexo.

*Antennæ* caule quinque-articulato clavâque pentaphylla.

*Palpi maxillares* articulo ultimo longissimo subtruncato.

*Corpus* fere oblongo-ovatum elytris a basi thoracis ad apicem magnitudine increscentibus.

*Thorax* postice obtuse angulatus.

*Pectus* sterno porrecto acuto armatum, et pilosum.

*Pedes* anteriores cubitis unidentatis dente fere obsoleto.

This Fabrician species differing in its form from any group that I am acquainted with, I have thought proper to consider as the type of a new genus. A second species will be found in my collection from the same country as the type, viz. New Holland.

GENUS. MICRODONTA, *Kirby*.

*Type of the Genus.* MELOLONTHA PINI, *Fab.*

*Antennæ* 9-articulatæ articulis intermediis filiformibus, 5 et 6 pateræformibus, clava oblonga trilamellata.

*Palpi maxillares* articulo externo semiovato.

*Cubitus* 3-dentatus.

*Nasus* rotundatus emarginatus reflexus. Unguiculi basi obsolete dentati.

The above insect affords sufficient characters for separating it from Monsieur Latreille's genus *Rhisotrogus*, under which name (according to the Baron De Jean's Catalogues) various species are thrown together which require further subdivision. To this genus belong *Mel. æstiva*, *aprilina* and *rufescens* with many others.

## GENUS. RHOMBONYX, Kirby.

*Type of the Genus.* MELOLONTHA HOLOSERICA,  
*Fab.*

*Nasus* apice truncatus reflexus.

*Labium* inflexum.

*Antennæ* 9-articulatæ.

*Palpi maxillares* articulo extimo ovato.

*Cubitus* subbidentatus.

*Unguiculi* inæquales, simplices, altero longiore majori, anteriori rhombiformi.

*Corpus* ovatum.

*Thorax* abdomine angustior.

*Elytra* e basi ad apicem sensim increscentia abdomine breviora, lineisque elevatis insignita.

*Podex* magnus triangularis deflexus.

Mr. Kirby has very properly separated this genus from *Anomala*, from which it differs in many respects. It is allied to *Euchlora* of Mr. MacLeay. All the species of *Rhombonyx* are glabrous and rarely if ever have the elytra with elevated lines. This form seems peculiar to Siberia, Japan, and China.



FAMILY. SERICIDÆ, *Hope*.

GENUS. CALONOTA, *Hope*.

*Type of the Genus.* MELOLONTHA FESTIVA, *Fab.*

*Corpus* hydrobiiforme.

*Clypeus* rotundatus submarginatus parum reflexus.

*Antennæ* clava trilamellata.

*Cubitus* 3-dentatus dente interno fere obsoleto.

*Palpi maxillares* ultimo articulo ovato-conico.

*Mesosternum* inter pedes anticos porrectum subcornutum. Quatuor *pedes antici* æquales femoribus compressis, *postici* femoribus incrassatis.

I am unable at present to give the full details of this genus, as the single specimen of the type in my possession (originally in Mr. Lee's cabinet) is in too mutilated a state to describe. It, however, affords ample characters for generic distinction. I am inclined to think that the antennæ of the sexes differ, and that the club in one sex has five lamellæ, while in the other only three. To this genus belong *Mel. læta*, *Fab.*, and other species all from New Holland. The name *Calonota* is derived from *καλος*, pulcher, and *νοτος*, tergum. Some insects are remarkable for their pearly and silky lustre; others again for

the delicate bloom, like that which ornaments the plum, to which Mr. Kirby has appropriately given the term pruinosis. The insects belonging to *Calonota* resemble the opalescence of minerals, at one time imitating the fire-stone or Lumachelli marble, at another the beauty of the Labrador Feldspars. It is an object well worthy of enquiry what causes these variations of colour, a subject scarcely investigated and little understood.

GENUS. *LIPARETRA*, Kirby.

*Type of the Genus.* *MELOLONTHA SYLVICOLA*, Fab.

*Nasus* apice truncatus.

*Antennæ* 9-articulatæ.

*Palpi* articulo extimo obovato.

*Corpus* crassum podice magno.

*Elytra* abdomine breviora.

*Unguiculi* simplices.

*Cubitus* 3-dentatus dentibus obtusis.

To this genus may be added *Melolontha Monticola*, Fab., and about twenty undescribed species in my collection. It is possible that the *Clypeus* varies in the sexes of the species belonging to this genus; should such be the case, the characters can be changed when the point is ascertained.

GENUS. *MACROSOMA*, *Hope*.

*Type of the Genus.* *MELOLONTHA GLACIALIS*, *Fab.*

*Labrum* rotundatum subemarginatum.

*Antennæ* clavâ elongato-ovata.

*Thorax* antice angustus postice parum latior.

*Corpus* elongatum, elytris thorace quadruplo longioribus.

*Cubitus* 3-dentatus.

To this genus may be added *Mel. lurida striata* and *testacea* of Fabricius. Two of the species described by him have the posterior margin of the thorax sinuated, particularly opposite the scutellum. *Mel. Areata* differs slightly from the other species in this respect. My zealous entomological friend, Mr. Charles Darwin, of Shrewsbury, (among various Zoological treasures obtained during his interesting voyage, now on the eve of publication) has brought with him from Terra del Fuego, a valuable collection of insects, among which are some species of *Macrosoma*, and I hope, at a future time, to detail the generic characters more fully than I have been able to do from the specimens in the Banksian collection, which probably reached this country in a mutilated state.



## A P P E N D I X.

---

### LAMELLICORN BEETLES OF LINNEUS.

Linneus, in the *Mantissa Plantarum*, (published in 1771) has, in an appendix to that work, noticed, among various other insects, four species of Lamellicorns, viz. *Scarabæus Dichotomus*, *Claviger*, *Goliathus*, and *Tetradactylus*. As they are all incorporated in the *Systema Eleutheratorum* of Fabricius, I did not think it necessary to attach them to the list of Linnean species, although they were originally described by him.

SP. 44. *Calcaratus*.—In a note relating to this insect I expressed an opinion that it might probably be a *Dichelus*. In a letter lately received from Monsieur Guérin, of Paris, he states his belief that it is a *Sisyphus* or an *Onitis*, leaving the question still undecided.

SP. 47. *Amazonus*.—Monsieur Guérin feels confident that this insect is a *Coprobius*, I am yet inclined to attach it to the genus *Cyclocephala*. The *Scarabæus Amazonus* ? of Drury is given by

Mr. Westwood in the new edition of the work of that author as the *Cyclocephala signata*, Fabr.

SP. 55. *Sepicola*.—A note from M. Guérin seems to confirm my opinion of *Sepicola* being an *Anisoplia*. The mark of interrogation attached to this species therefore may be omitted.

SP. 56. *Syriacus*.—Monsieur Guérin asserts that this species is not an *Anisoplia* but an *Amphicoma*, in which opinion he is probably correct.

SP. 82. *Æneus*.—The French Entomologists think that this species is probably a *Dichelus* from the Cape of Good Hope, more satisfactory intelligence may yet be expected concerning it from the Swedish writers.

#### LAMELLICORN BEETLES OF FABRICIUS.

SP. 20. *Latebrosus*.—The reader is referred to Mr. Kirby's late work, *The Fauna Boreali-Americana*, for various interesting remarks on the Lamellicorns contained therein, and as it will render the student some important service, by combining the latest published account of the species mentioned by Linneus and Fabricius, I shall briefly state the more important points alluded to in that publication, taking them in the order in which they are mentioned.



*Type of the Genus.* PELIDNOTA, MacLeay.

SP. 76. *Punctata*.—Mr. Kirby remarks, in a note respecting the Rutelidæ, to which the above insect belongs, “That the Rutelidæ exhibit the vertical præsternum of the Dynastidæ, which is wanting in the Anoplognathidæ.” He therefore considers them, with Latreille, as more immediately connected with the former family, and has placed them accordingly. (Vid. Linnean Tables, Sp. 76.)

SP. 72. *Brunnea*.—Now of the family Sericidæ. The establishment of the family Sericidæ is quite in accordance with my views. The description of a new genus belonging to it named *Camptorhina* by Mr. Kirby, is published with its details, to which also some valuable remarks on *Serica* M. L. are appended at page 128. (Vid. Linnean Tables, Sp. 72.)

SP. 77. *Fulgida*.—Mr. Kirby has given a full and ample description of this insect in English, and it is to be hoped that other entomologists, will adopt the plan of publishing English descriptions, taking care also to give a concise Latin one, that foreigners, as well as ourselves, may be able to derive benefit from what is published in this country. (Vide Fabrician Tables, Sp. 77.)

SP. 13. *Trichius piger*, *Fab.*—Mr. Kirby, some time since, in the Zoological Journal, published his remarks on the Trichiidæ, and made *piger*, *Fab.* the type of a subgenus. The name of *Trichinus* too closely resembles *Trichius*. The reader is referred to the North American Fauna, page 136, for an account of several new species, and copious observations respecting this interesting family. In the last mentioned work a new family of the Lamellicorns named *Diplo-taxidæ* has been instituted by Mr. Kirby, and a new genus, bearing the name of *Dichelonycha* has been separated from *Macro-dactylus*, from which it is distinguished by having its maxillæ armed only with two teeth, the last joint of its palpi of a different shape, and its labium approaching to a square form; whereas in the latter genus the maxillæ are more conspicuous, and armed with three teeth, the last joint of the palpi is subovate, and the labium is oblong and channelled. The species seem confined to the northern parts of the New World. Three are described, the type being *Melolontha linearis*, *Herbst.*

## LUCANUS 12.

SP. 20. *Piceus*.—Mr. Kirby has given the generic name of *Platycerus* to the above insect, not aware, perhaps, that Mr. William Sharpe MacLeay has published it under the title of *Ceruchus*.

## PASSALUS 14.

SP. 1. *Interruptus*.—This species, I am inclined to think, belongs peculiarly to South America, and never enters the United States, apparently the *Interruptus* of Linneus and Fabricius are distinct insects. On turning to Monsieur Perchéron's monograph of *Passalus*, his remarks relating to the country it inhabits are as follows: This species is common to Cayenne and intertropical America. I have observed in the collections which I have examined, some small individuals under the name of *P. Ambegicus*, it is impossible, however, to discover any specific difference in them. They are all from Colombia. He adds, "Je crois que cette espèce fait partie de la masse déjà trop nombreuse de celles qui ne doivent leur existence qu'au désir de multiplier les espèces nouvelles, pour augmenter ses moyens d'échange, et dont on doit faire prompt et brève justice." (Vid. Perchéron's *Monographie des Passales*, p. 45.)

---

With respect to the Goliathidæ, I shall now attempt to draw up a few observations upon this interesting family, which I was precluded from doing when the former sheets were going through the press, as I was absent from the metropolis, and unable to have access to my cabinet.

## GOLIATHIDÆ.

<i>Thoracæ rotundato.</i>	<i>Country.</i>	<i>Thoracæ trapezoidali.</i>
Goliathus	Africa	{ Mecynorhina.
————— ?	Asia	{ Dicronorhina
Dicronocephalus	East India	Rhomborhina.
Lucas	Brazil	Jumnos
		N. G. (Hæfneri Dej.)

SECT. 1.—“Thorax antice et postice angulis rotundatis.”

GENUS. Goliathus.—Tibiæ anticæ ♂ inermes, ♀ extus tridentatæ, 4-posticæ ♂ inermes, ♀ dente medio armatæ maxillæ lobo apicali corneo dentato.

The following species belong to this genus :

- 1 Goliathus giganteus, *Kirby.*
- 2 ————— Drurii, *Westwood.*
- 3 ————— Cacicus, *Olivier.*
- 4 ————— Regius, *Klug.*
- 5 ————— Princeps, *Hope.*

GOLIATHUS PRINCEPS, *Hope.*

Long. Unc. 3. Lat. elytr. Unc. 1. lin. 7.

Nigro-piceus capite 2-maculato, thorace vittato, scutello lateribus subalbidis, clytris late nigropiceis lateribus et apicibus albis, tuberculis apicalibus nigris.

Habitat in Guinea. In museo nostro.

Caput antice subsinuatam, supra planum marginibus reflexis, nigrum punctatissimum maculis duabus fere mediis fulvis.

*Antennæ* nigræ articulo basali rufo-hirto.

*Mandibulæ* subquadratae angulo antico externo indentem parvum planum productum, lobo interno hirsuto.

*Maxillæ* corneæ, lobo apicali corneo curvato acuto, extus pilosissimo, dentibus duobus internis armatae.

*Palpi* maxillares breves articulis 2 et 3 æqualibus 4<sup>to</sup> longiori apice subacuto.

*Mentum* magnum ad basin angustius antice valde emarginatum, lobo singulo valde transverse impresso.

*Palpi labiales* brevissimi, articulo extimo longiori foveis menti anticis recepti.

*Thorax* piceo-niger punctatissimus punctis positivis majoribus sensim distantibus; margine antico,

in medio tuberculo acuto armatus, disco ante medium sub excavato, nitidus, vittis 7 albido-ochraceis, media abbreviata.

*Scutellum* læve lateribus albidis.

*Elytra* nigro-picea subrugosa, irregulariter subpunctata, lateribus apiceque lato iridescenti-margaritaceis, tuberculo in singulo fere apicali nigro.

*Corpus* infra et pedes nigro-picea.

*Tibiæ* anticæ extus 3-dentatæ, 4 posticæ in medio unidentatæ, externe fulvo plosæ.

I have given the name of Goliathus Princeps to the above species, as it differs in many points from *G. Regius* figured by Professor Klug in Erman's Voyage. In the present state of our knowledge it is difficult to decide with certainty whether the above described insect be the female of any of the already described, or of a still unknown, species. It is better therefore to give it a provisional name, although the insect is evidently a female, than let it remain undescribed. At a future time it can be changed when more accurate information is obtained. It is almost impossible to convey, in Latin, an idea of the iridescent colour of some of these Goliath Beetles, the appearance of mother-of-pearl exactly corresponds with the pale portion of the elytra of the insect above described. The nature and causes of the colouring



matter with which so many of these insects are adorned, would form a very interesting subject of inquiry.

SECT. 2.—Thorax trapezoidalis.

MECYNORHINA, *Hope*.

♂ Tibiæ anticæ dentibus utrinque armatæ.

Tibiæ intermediæ dente parvo medio armatæ.

*Type of the Genus.* GOL. POLYPHEMUS, *Fab.*

A second species of this genus is in the possession of Mr. Joseph Hooker, of Glasgow. At present it is undescribed.

DICRONORHINA, *Hope*.

♂ Tibiæ anticæ interne dentibus armatæ, 4-positicæ inermes.

♀ Tibiæ anticæ externe dentibus tribus, 4-positicæ unico medio armatæ.

*Type of the Genus.* CETONIA MICANS, *Fab.*

To this genus belong also *Cet. 4-maculata*, Oliv. (which is evidently the same as *Gol. Daphnis* Buquet,) and also *Goliathus Grallii* of the same author.

RHOMBORHINA, *Hope*.

♂ Tibiæ anticæ inermes, quatuor posticæ dente minutissimo medio.

♀ Tibiæ anticæ 2-dentatæ, 4-posticæ dente majori unico, medio, armatæ.

*Type of the Genus.* GOLIATHUS HEROS, *Latreille*.

To this genus belong the following species, namely, 2. Gol. Mellii (Melly Gory) 3. Gol. Opalina, *Hope*, which seems to be the same as *Cet. Japonica*, *Siebold*; 4. Gol. *Hardwickii*, *Hope*; 5. Gol. *Roylii*, *Hope*; 6. *Cetonia Cincta* of the *Zoological Journal*.

---

 MIMELA XANTHORHINA, *Hope*

(Vide page 76.)

*M. viridis*, nitida capite antice, thoracis elytrorumque lateribus luteo-tinctis, corpore subtus cum pedibus fusco-testaceis.

Long. Corp. lin. 7.

Habitat in montibus Indiæ Neilgherry dictis. Madras. In mus. nostr.

Species parva, magnitudine Mem. Blumei æqualis. Supra viridis nitida, capite thoraceque sub lente punctatissimis, elytris punctis majoribus irregulariter dispositis, et in singulo elytro lineas 9 punctorum longitudinales, per paria digestas (1<sup>mo</sup> saturali.) Clypeus et margines thoracis et elytrorum luteo-tincti. Antennæ, palpi, pedes et corpus subtus totum, fusco-lutea, femoribus basi pallidioribus. Podex viridis apice luteo.

---

*Postscript.*—It was not until after the preceding observations upon the Goliathidæ were printed that I obtained a knowledge of the genus Narycius of Dupont, published in one of the recent numbers of Guérin's *Magasin de Zoologie*, which is the cause of its omission.

FINIS.





THE HISTORY  
OF THE  
UNIVERSITY OF BIRMINGHAM

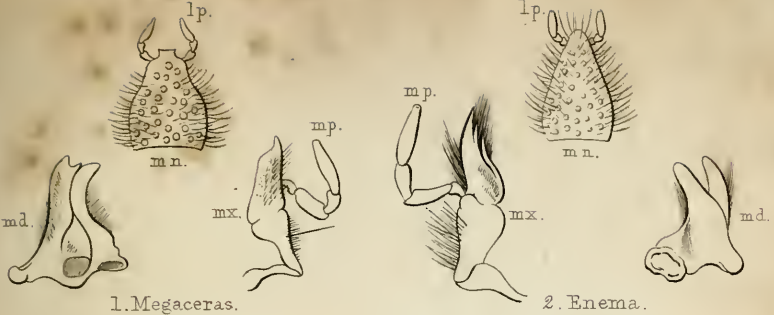
ERRATA.

---

- Page 16. Hæmorrhoidales, *read* Hæmorrhoidalis.  
,, 33. (71) Medea, *read* Media.  
,, 34. Anisodon, *read* Tassarodon.  
,, 57. (line 14) after cinereis add a comma.  
,, 66. Discoïdo, *read* discöide.  
,, 74. Within, *read* with in.  
,, 74. Hydrobiiform, *read* Hydrobiform.  
,, 106. Rhombonyx, *read* Euchlora.  
,, 121. (line 1) Mem. Blumei, *read* Mim. Blumei.  
Plate 3. Tassarodon, *read* Tesserodon.

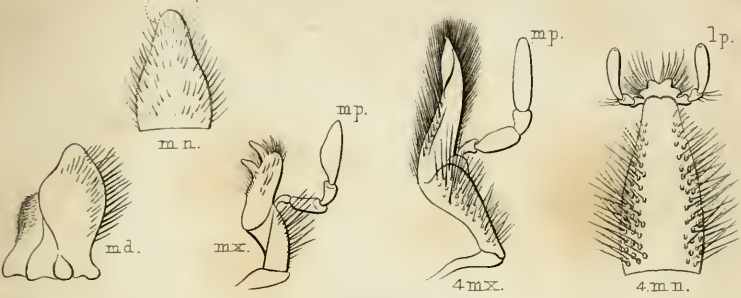




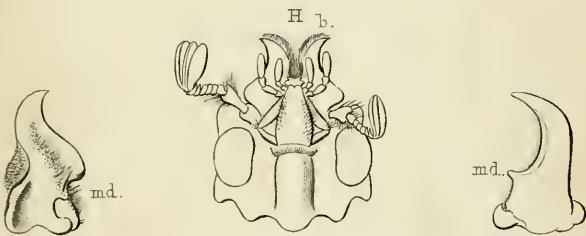


1. Megaceras.

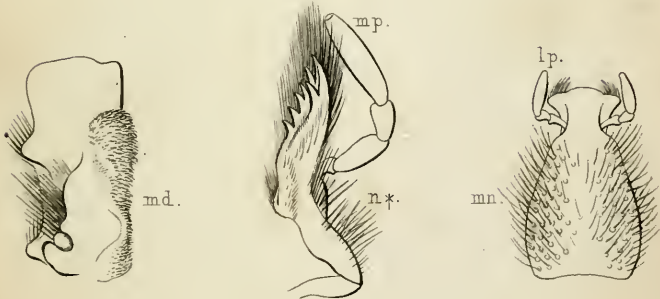
2. Enema.



3. Cheiropatys.



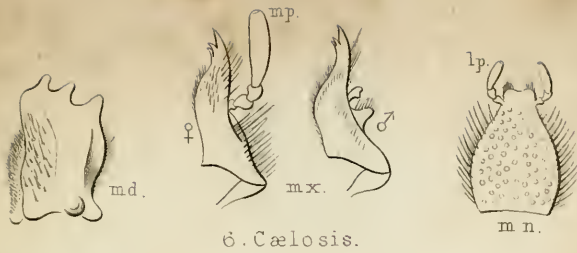
4. Chalcosoma.



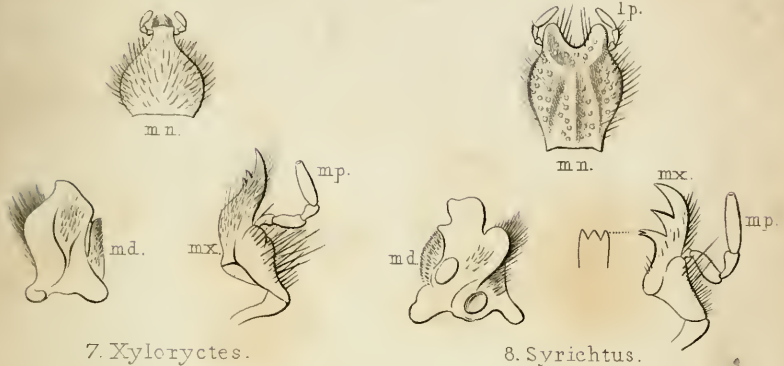
5. Strategus.



THE LIBRARY  
OF THE  
UNIVERSITY OF MICHIGAN

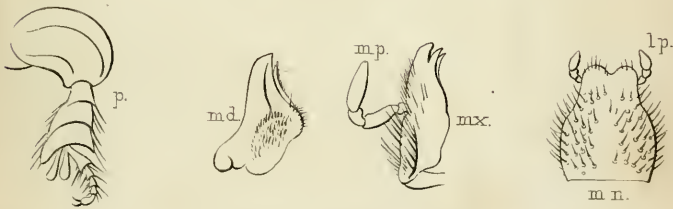


♂. Caelosis.

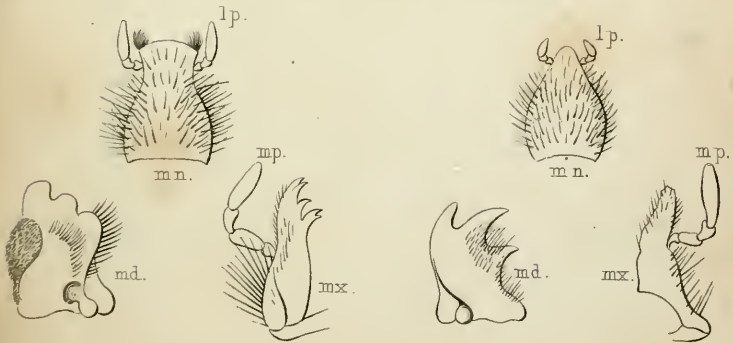


7. Xyloryctes.

8. Syrichtus.



10. Temnorhynchus.



9. Pentodon.

11. Bothynus.

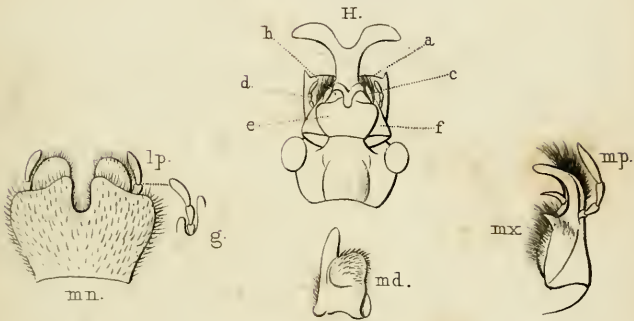




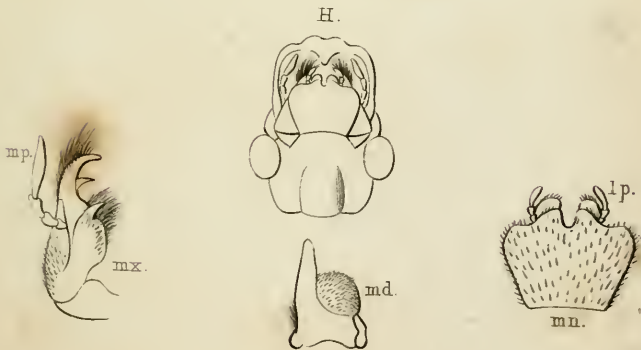
15. Tefserodon Novae Hollandiae.



12. Isodon.



13. Goliathus Cacicus ♂.



14. Goliathus Princeps ♂.

THE LIBRARY  
OF THE  
UNIVERSITY OF ILLINOIS













UNIVERSITY OF ILLINOIS-URBANA

595.76H77C

C001 V001

THE COLEOPTERIST'S MANUAL\$LOND



3 0112 010055058