

NOV 16 1928

THE LIZARDS

OF

AUSTRALIA AND NEW ZEALAND

IN THE

COLLECTION OF THE BRITISH MUSEUM.

(WITH 18 PLATES OF THE NEW SPECIES, BY MR. FORD.)

BY

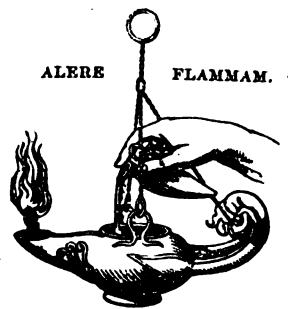
JOHN EDWARD GRAY, PH.D., F.R.S., V.P.Z.S., F.L.S., ETC

KEEPER OF THE ZOOLOGICAL COLLECTIONS IN THE BRITISH MUSEUM.

LONDON:

BERNARD QUARITCH, PICCADILLY.

MDCCLXVII.



PRINTED BY TAYLOR AND FRANCIS,
RED LION COURT, FLEET STREET.

5731
23-19

LIZARDS

OF

AUSTRALIA AND NEW ZEALAND.

Suborder LEPTOGLOSSA.

Tribe I. CYCLOSAURÆ.

Family I. MONITORIDÆ, *Gray, Cat. Lizards B. M.* 6.

1. *Odatria punctata* (T. 1.), *Gray, Cat. Lizards B. M.*
7. *Monitor tristis*, *Schlegel. Hab. Western Australia.*
Var. *timorensis. Hab. North Australia.*
2. *Odatria ocellata* (T. 2.), *Gray, l. c.* 8; *Zool. E. & T.*
t. 3. *Hab. North-west coast of Australia.*
3. *Monitor Gouldii* (T. 3), *Gray, l. c.* 12. *Hydrosaurus*
Gouldii, *Gray, Grey's Travels*, ii. 422. *Hab. West Aus-*
tralia.

4. *Hydrosaurus varius*, *Gray, l. c.* 12. *Lacerta varia*,
Shaw; White, Tour N. S. W. t. 3. f. 2. *Hab. New Holland.*

†5. *Hydrosaurus Bellii*, *Gray, l. c.* 13. *Uranus*
Bellii, *Dum. & Bibr. E. G.* iii. t. 35. f. 1. *Hab. Australia.*

6. *Hydrosaurus giganteus* (T. 4), *Gray, l. c.* 13; *Zool.*
E. & T. t. 4. *Hab. North coast of Australia.*

Family II. LACERTINIDÆ, *Gray, l. c.* 26.

7. *Zootoca Derbiana*, *Gray, l. c.* 29. *Hab. Australia,*
Earl of Derby.

Tribe II. GEISSOSAURÆ, *Gray, l. c.* 62.

Family II*. GYMNOPHTHALMIDÆ.

8. *Cryptoblepharus Burtonii*, *Gray, l. c.* 64. *C.*
Peronii, *Coct. Mag. Zool.* t. . *Ablepharus pœcilopleurus*,
Wieg. N. A. N. Cur. xv. 138, t. 8. f. 1. *Tiliqua Bucha-*
nani, *Gray, Ann. N. H.* ii. 291. *Hab. Western Australia.*

9. *Cryptoblepharus lineo-ocellatus*, *Gray, l. c.* 65;
Gray's Travels, ii. 427. *Hab. Swan River.*

10. *Morethia anomala*, *Gray, l. c.* 65. *Hab. Western*
Australia.

11. *Menetia Greyii*, *Gray, l. c.* 66. *Hab. Western*
Australia.

12. *Miculia elegans*, *Gray, l. c.* 66. *Hab. Western*
Australia.

†13. *Lerista lineata*, *Gray, l. c.* 66; *Bell, Zool. Journ.*
v. 393, t. 26. f. 2. *Hab. Australia, Bell.*

Family III. PYGOPIDÆ, *Gray, l. c.* 67.

14. *Pypopus lepidopodus*, *Gray, l. c.* 67. *Bipes lepi-*
dopodus, *Lacép. Ann. Mus.* v. t. 55. f. 1. *Hab. Australia.*
Var.—. *Hab. Swan River.*

15. *Pygopus squamiceps* (T. 8. f. 3), *Gray, l. c.* 68.
Hab. Australia.

16. *Delma Fraseri*, *Gray, l. c.* 68; *Zool. Misc.* 14;
Grey's Travels, ii. 427, t. 4. f. 3. *Hab. Western Australia.*

There is a narrow band of very small scales over the
upper labial shields; the lower labial shields are large,
covering the chin.

Genus NISARA.

Like *Delma*, but without any narrow band of loreal
scales over the upper labial shields.

17. *Nisara Grayii*. *Delma Grayii*, *A. Smith, MS.*
1849, *B. M.*

Olive sides, with indistinct white bands; beneath white.
Tail three times as long as the body. *Hab. Australia.*

Family IV. APRASIADÆ, *Gray, l. c.* 68.

18. *Aprasia pulchella*, *Gray, l. c.* 68; *Grey's Travels*
Austral. ii. 428, 438, t. 4. f. 2. *Hab. Western Australia.*

B

†19. **Aprasia octolineata**, Peters, Monatsb. Berlin, 1863, p. 233. *Hab.* Adelaide, Australia.

Family V. LIALISIDÆ, Gray, l. c. 69.

20. **Lialis Burtonii** (T. 8. f. 2), Gray, l. c. 69; *Grey's Travels*, ii. 437, t. 3. f. 1. *Hab.* Western Australia. *Lialis bicatenata*, Gray, l. c. 69; *Zool. Misc.* 52. *Hab.* North Australia.

21. **Lialis punctulata** (T. 8. f. 1), Gray, l. c. 69; *Zool. Misc.* 52. *Hab.* North Australia.

Family VI. SCINCIDÆ.

22. **Hemisphæriodon Gerrardii** (T. 9.). *Hinulia Gerrardii*, Gray, l. c. 75. *H.* (Hemisphæriodon) *Gerrardii*, Günther. *Hab.* Australia, Rockhampton.

23. **Hinulia elegans** (T. 10. f. 1), Gray, l. c. 76. *Hab.* Australia.

24. **Hinulia Greyii** (T. 10. f. 3), Gray, l. c. 76. *Hab.* Swan River.

25. **Hinulia tenuis** (T. 11. f. 3), Gray, l. c. 76. *Lygosoma erucata*, Dum. & Bibr. *Hab.* West Australia.

26. **Hinulia ornata** (T. 11. f. 1), Gray, l. c. 77. *Tiliqua ornata*, Gray, Dieffenb. N. Z. ii. 202. *Hab.* New Zealand.

27. **Hinulia Labillardieri**, Gray, l. c. 77. *Hab.* Australia, King George's Sound, Swan River.

28. **Hinulia australis**, Gray, l. c. 77. *Hab.* Western Australia.

29. **Hinulia Essingtonii**, Gray, l. c. 78. *Tiliqua Essingtonii*, Gray, *Zool. Misc.* 51. *Hab.* North Australia, Port Essington.

30. **Hinulia inornata** (T. 10. f. 2), Gray, l. c. 78. *Hab.* Western Australia, Swan River.

31. **Hinulia tæniolata**, Gray, l. c. 78. *Lacerta tæniolata*, Shaw, *White's Tour*, t. 32. f. 1. *Hab.* Australia.

Var. Lateral streaks indistinct or obliterated. *Hab.* Van Diemen's Land.

32. **Hinulia Whittii**, Gray, l. c. 79. *Scincus Whitei*, Lacép. *Tiliqua leucopsis*, Gray, *Ann. N. H.* ii. 291. *Hab.* Western Australia.

33. **Hinulia Richardsonii** (T. 11. f. 2), Gray, l. c. 272. *Hab.* Western Australia, Champion Bay.

34. **Hinulia fasciolata**, Günther, *Ann. & Mag. N. H.* 1867, xx. 47. *Hab.* Australia, Rockhampton.

35. **Hinulia branchialis**, Günther, *Ann. & Mag. N. H.* 1867, xx. 74. *Hab.* North-west Australia, Champion Bay.

†36. **Hinulia? striatulus**. *Euprepis striatulus*, Steindachner, *Reise der Novara*, p. 49. *Hab.* New South Wales (?).

37. **Mocoo Guichenoti**, Gray, l. c. 80. *Lygosoma Guichenoti*, Dum. & Bibr. *Hab.* Australia, King George's Sound.

38. **Mocoo trilineata**, Gray, l. c. 81. *Tiliqua trilineata*, Gray. *Lygosoma Duperreyii*, Dum. & Bibr. *Hab.* Western Australia.

39. **Mocoo ocellata** (T. 7. f. 3), Gray, l. c. 82. *Hab.* Australia.

40. **Mocoo Entrecasteauxii** (T. 7. f. 5), Gray, l. c. 82. *Hab.* Australia.

41. **Mocoo zelandica** (T. 7. f. 4), Gray, l. c. 82. *Tiliqua zelandica*, Gray. *Hab.* New Zealand.

42. **Mocoo Smithii**, Gray, l. c. 82. *Lampropholis Smithii*, Fitz. *Hab.* New Zealand.
See *Hinulia ornata*, var.

43. **Mocoo microtis** (T. 7. f. 2), Gray, l. c. 83. *Hab.* Swan River.

44. **Mocoo Owenii**, Gray, l. c. 272. *Lacerta tæniolata*, Mus. Col. Surg. n. 206. Ribbon-Lizard, White, *Voy.* *Hab.* Australia.

45. **Mocoo grandis**, Gray, l. c. 272. *Hab.* New Zealand.

46. **Carlia melanopogon** (T. 7. f. 1), Gray, l. c. 271. *Mocoo melanopogon*, Gray, l. c. 81. *Hab.* North Australia.

47. **Lygosoma australe**, Gray, l. c. 85; *Ann. & Mag. N. H.* ii. 332. *Hab.* Swan River.

48. **Lygosoma Bougainvillii**, Gray, l. c. 85; Dum. & Bibr. *Hab.* Australia.

49. **Lygosoma laterale**, Günther, *Ann. & Mag. N. H.* 1867, xx. 45. *Hab.* South Australia.

†50. **Lygosoma Schomburgkii**, Peters, Monatsb. Berl. 1863, p. 231. *Hab.* West Australia, Adelaide, Schomburgk.

51. **Tetradactylus decresiensis**, Gray, l. c. 86. *Seps Peronii*, Fitz. *Chiamela Duvaucelli*, Gray, *Ann. N. H.* ii. 333. *Hab.* Australia, Kangaroo Island, Swan River.

52. **Hemiergis decresiensis**, *Wagler*; *Gray*, l. c. 87. *Tridactylus decresiensis*, *Cuvier*. *Hab.* Kangaroo Island.
53. **Hemiergis polylepis**, *Günther*, *Ann. & Mag. N. H.* 1867, xx. 48. *Hab.* South Australia, *Krefft*.
54. **Chelomeles quadrilineatus**, *Gray*, l. c. 87; *Dum. & Bibr.* v. 774. *Hab.* West Australia, Swan River.
55. **Omolepida casuarinæ**, *Gray*, l. c. 88. *Cyclodus casuarinæ*, *Dum. & Bibr.* v. 749; *Bell*, *Zool. Beagle*, t. 15. f. 3. *Hab.* Van Diemen's Land.
56. **Siaphos æqualis**, *Gray*, l. c. 89. *Seps æqualis*, *Gray*. *Hemiergis decresiensis* (part.), *Dum.* *Hab.* Australia.
57. **Rhodona punctata**, *Gray*, l. c. 889. *Ronia cate-nulata*, *Gray*, *Grey's Travels*, ii. 426, t. 4. f. 1. *Hab.* West Australia.
58. **Rhodona Gerrardii**, *Günther*, l. c. 1867, xx. 46. *Rhodona punctata*, var. *Gerrardii*, *Gray*. *Hab.* Swan River.
59. **Rhodona punctato-vittata**, *Günther*, l. c. 47. *Hab.* Queensland.
60. **Soridia lineata**, *Gray*, l. c. 90; *Grey's Travels*, ii. 428, t. 3. f. 2. *Præpedilus lineatus*, *Dum. & Bibr.* *Hab.* West Australia.
61. **Soridia miopus**, *Günther*, *Ann. & Mag. N. H.* 1867, xx. 49. *Hab.* West Australia, Champion Bay.
62. **Anomalopus Verreauxii**, *Dum. & Bibr. E. G.*; *Günther*, *Ann. & Mag. N. H.* 1867, xx. 47. *Hab.* Australia, Brisbane.
63. **Plestiodon quinquelineatum**, *Gray*, l. c. 91. *Hab.* Australia; introduced by American ship?
64. **Mabouia macrura**, *Günther*, *Ann. & Mag. N. H.* 1867, xx. 48. *Hab.* North Australia, Cape York.
65. **Trachydosaurus rugosus**, *Gray*, l. c. 102; *King's Voy. Aust.* 422, t. . *Brachydactylus typicus*, *A. Smith*. *Trachysaurus Peronii*, *Wagler*. *Hab.* West Australia.
66. **Trachydosaurus asper**, *Gray*, l. c. 103. *Hab.* West Australia.
67. **Cyclodus gigas**, *Gray*, l. c. 103. *Scincus gigas*, *Bodd.* *Tiliqua Whitei*, *Gray*. *Lacerta scincoides*, *Shaw*. *C. Boddærtii*, *Dum. & Bibr.* *Hab.* Australia, North Australia, Van Diemen's Land.
68. **Cyclodus occipitalis**, *Peters*, *Monatsb. Berlin*, 1863, p. 233. *Hab.* South Australia, Adelaide, *Krefft*.
69. **Cyclodus adelaidensis**, *Peters*, *Monatsb. Berlin*, 1863, p. 232. *Hab.* South Australia, Adelaide, *Krefft*.
70. **Cyclodus nigroluteus**, *Gray*, l. c. 104; *Wagler*. *Scincus nigroluteum*, *Quoy & Gaim.* *Hab.* Australia, Van Diemen's Land.
71. **Silubosaurus Stokesii**, *Gray*, l. c. 105. *Hab.* West Australia.
72. **Egernia Cunninghamsi**, *Gray*, l. c. 105; *Stokes's Travels in Aust.* t. . *Hab.* Australia.
73. **Tropidolepisma Kingii** (T. 13), *Gray*, l. c. 106. *Tiliqua Kingii*, *Gray*. *Tropidolepisma Dumerilii*, *Dum. & Bibr.* *Hab.* Australia.
74. **Tropidolepisma nitidum** (T. 12), *Gray*, l. c. 106. *Hab.* Australia.
75. **Tropidolepisma majus** (T. 14), *Gray*, l. c. 107. *T. majus*, *Günther*. *Hab.* Australia.

Family VII. TYPHLOPSIDÆ, *Gray*, l. c. 103.76. **Onychophis Franklinii**, *Gray*, l. c. 132. *Hab.* Australia.77. **Anilius australis**, *Gray*, l. c. 135. *Hab.* West Australia.78. **Anilius nigrescens**, *Gray*, l. c. 135. *Hab.* Australia, Paramatta.† 79. **Argyrophis bramicus**, *Gray*, l. c. 138. *Hab.* Australia?

Suborder PACHYGLOSSA.

Tribe III. NYCTISAURÆ.

Family VIII. GECKOTIDÆ, *Gray*, l. c. 142.80. **Cedura marmorata** (T. 16. f. 4; f. 1, junior), *Gray*, l. c. 147; *Phyllodactylus marmoratus*, *Zool. Misc.* *Hab.* North Australia.81. **Cedura rhombifera** (T. 16. f. 6), *Gray*, l. c. 147. ? *Phyllodactylus Lesueurii*, *Dum. & Bibr.* *Hab.* West Australia.82. **Strophura spinigera** (T. 16. f. 5), *Gray*, l. c. 148. *Diplodactylus spinigera*, *Gray*, *Zool. Misc.* 53. *Phyllodactylus strophiuirus*, *Dum. & Bibr. E. G.* iii. 301, t. 32. f. 1. *Hab.* West Australia.83. **Diplodactylus vittatus** (T. 16. f. 3), *Gray*, l. c. 148; *P. Z. S.* 1832, p. 40. *Hab.* Australia, West Australia.84. **Diplodactylus ornatus** (T. 16. f. 2), *Gray*, l. c. 149. *Hab.* West Australia.85. **Diplodactylus ocellatus** (T. 15. f. 4), *Gray*, l. c. 149. *Hab.* West Australia.

86. **Diplodactylus bilineatus** (T. 15. f. 3), *Gray, l. c.* 149. *Hab.* West Australia.
87. **Diplodactylus marmoratus** (T. 15. f. 6), *Gray, l. c.* 149. *Hab.* West Australia.
88. **Diplodactylus polyophthalmus**, *Günther, Ann. & Mag. N. H.* 1867, xx. 49. *Hab.* Australia, Nicol Bay, Champion Bay.
- †89. **Diplodactylus furcosus**, *Peters, Monatsb. Berlin*, 1863, p. 229. *Hab.* South Australia, Adelaide.
90. **Hemidactylus Brookii** (T. 15. f. 2), *Gray, l. c.* 153. *Hab.* Australia?
91. **Hemidactylus vittatus** (T. 15. f. 5), *Gray, l. c.* 155. *Hab.* North Australia, Borneo.
92. **Peripia variegata**, *Gray, l. c.* 159. *Hemidactylus variegatus*, *Dum. & Bibr. E. G.* iii. 353. *Hab.* West Australia.
- †93. **Pentadactylus australis**. *Hoplodactylus australis*, *Steindachner, Reise der Novara*, p. 18. *Hab.* New South Wales.
94. **Gecko verus**, *Gray, l. c.* 161. *Hab.* Australia, introduced by ships?
95. **Gehyra australis**, *Gray, l. c.* 163. *Hab.* West Australia, North Australia.
- †96. **Gehyra ? Grayii**. *Gecko Grayii*, *Steindachner, Reise der Novara*, ii. *Hab.* New South Wales.
97. **Naultinus pacificus**, *Gray, l. c.* 169 and 273; *Zool. Misc.* 38. ? *Platydactylus Duvaucei*, *Dum. & Bibr.* *Dactylocnemis Wüllerstorffii*, *Fitzinger*. *Dactylocnemis pacificus*, *Steindachner*, ii. *Hoplodactylus Pomari*, *Gerard*, 294, t. 18. f. 10-16. *Hab.* New Zealand.
Toes vary in length, perhaps a sexual variation.
98. **Naultinus granulatus**, *Gray, l. c.* 273. *Hab.* New Zealand.
99. **Naultinus elegans**, *Gray, l. c.* 169; *Zool. Misc.* 72. *Gymnodactylus elegans*, *Dum.* *Hoplodactylus elegans*, *H. pacificus*, *H. punctatus*, and *H. Grayii*, *Fitz.* not *Gray*. *Hab.* New Zealand.
100. **Naultinus Grayii**, *Gray, l. c.* 170; *Bell, Zool. Beagle*, 27, t. 14. f. 3.
101. **Naultinus punctatus**, *Gray, l. c.* 170; *Dieffenb. N. Z.* ii. 204; *Gerard*, 209, t. 16. f. 17-26. *Hab.* New Zealand.
102. **Goniodactylus australis**, *Gray, l. c.* 172. *Hab.* West Australia.
103. **Heteronota Binoei**, *Gray, l. c.* 174. *Eublepharis derbianus*, *Gray, l. c.* 274. *Hoplodactylus australis*, *Steindachner, Reise der Novara*, p. 18, t. 1. f. 2. *Hab.* West Australia, North Australia.
104. **Phyllurus platurus** (T. 17. f. 3), *Gray, l. c.* 176; *Cuvier*. *Lacerta platurus*, *Shaw*. *Lacerta discosurus*, *Lacép.* *Stellio phyllurus*, *Schneid.* *Hab.* Australia, New Holland.
105. **Phyllurus Myliusii** (T. 17. f. 2), *Gray, l. c.* 176; *Bory; Dum. & Bibr. E. G.* iii. 430, t. 33. f. 1. *Hab.* Australia, Sydney, Western Australia.
106. **Phyllurus inermis** (T. 17. f. 1), *Gray, l. c.* 176. *Hab.* Australia.
107. **Rhynchoedura ornata**, *Günther, Ann. & Mag. N. H.* 1867, xx. 51. *Hab.* Western Australia, Nicol Bay.

Tribe IV. STROBILOSAURÆ, *Gray, l. c.* 178.

Family IX. AGAMIDÆ.

108. **Chelonasia brunnea**, *Gray, l. c.* 245. *Hab.* Western Australia.
109. **Gindalia Bennettii**, *Gray, l. c.* 247. *Hab.* North-west coast of Australia.
110. **Physignathus Lesueurii**, *Gray, l. c.* 248. *Lophura Lesueurii*, *Gray; Dum. & Bibr. E. G.* iv. 384, t. 40. f. 1. *Amphibolurus heterurus*, *Peters, Monatsb.* *Hab.* Australia, Clarence River.
111. **Chlamydosaurus Kingii**, *Gray, l. c.* 249; *King, Voy. Aust.* ii. t. 1.; *Voy. au Pôle Sud*, t. 6. *Hab.* North Australia.
112. **Hatteria punctata** (T. 20.), *Gray, l. c.* 249; *Zool. Misc.* 72; *Gigantic Lizard*, *Cook*; *Rhynchocephalus*, *Owen, Trans. Geol. Soc.* vii. 80, t. 6. f. 5, 6, 7, 1845 (not described). *Hab.* New Zealand.
113. **Lophognathus Gilbertii** (T. 19. f. 2), *Gray, l. c.* 250; *Zool. Misc.* 53. *Redtenbacheria fasciata*, *Steindachner, Reise der Novara, Rept.* 31. *Hab.* North Australia. Swan River.
114. **Diporophora bilineata** (T. 19. f. 1), *Gray, l. c.* 250; *Zool. Misc.* 54. *Hab.* North Australia.
115. **Grammatophora cristata**, *Gray, l. c.* 251. *Hab.* Western Australia.
116. **Grammatophora muricata**, *Gray, l. c.* 251. *Lacerta muricata*, *Shaw*. *Agama Jacksoniensis*, *Kuhl.* *A. grandoculus*, *Lacép.* *Hab.* Western Australia, New Holland, Van Diemen's Land.
117. **Grammatophora reticulata**, *Gray, l. c.* 252. *G. Decresii*, *Gray*, not *Dum. & Bibr.* *Hab.* Western Australia.

118. *Grammatophora barbata* (T. 18. f. 1), *Gray, l. c.* 252. *Agama barbata, Cuvier. Hab.* Western Australia.
119. *Grammatophora angulifera* (T. 18. f. 3), *Gray, l. c.* 253. *Hab.* Van Diemen's Land.
 Var. *adelaidensis* (T. 18. f. 2), *Gray, in Grey's Travels, ii. Hab.* Western Australia.
120. *Grammatophora maculata, Gray, l. c.* 253. *Uromastix maculata, Gray. Grammatophora Gaimardi, Dum. & Bibr. iv. 470. Hab.* Australia, Bay of Sea-dogs.
121. *Grammatophora Decresii, Gray, l. c.* 253; *Dum. & Bibr. iv. 472. Hab.* Western Australia.
122. *Grammatophora ornata* (T. 18. f. 4), *Gray, l. c.* 253. *Amphibolurus ornatus, Peters. Hab.* Western Australia.
123. *Grammatophora macrolepis, Günther, Ann. & Mag. N. H. 1867, xx. 51. Hab.* —?
124. *Grammatophora lævis, Günther, l. c.* 52. *Hab.* Australia, Champion Bay.
125. *Grammatophora temporalis, Günther, l. c.* 52. *Hab.* North Australia.
126. *Grammatophora calotella, Günther, l. c.* 52. *Calotella australis, Steindachner, Reise der Novara, p. 28. Hab.* North Australia, Cape York.
- †127. *Tympanocryptis lineata, Peters, Monatsb. Berlin, 1863, p. 236. Hab.* Adelaide, South Australia, Schomburgk.
128. *Tympanocryptis cephalus, Günther, Ann. & Mag. N. H. 1867, xx. 52. Hab.* Australia, Nicol Bay.
129. *Moloch horridus, Gray, l. c.* 263; *Grey's Travels in Western Australia, t. . Hab.* Western Australia.

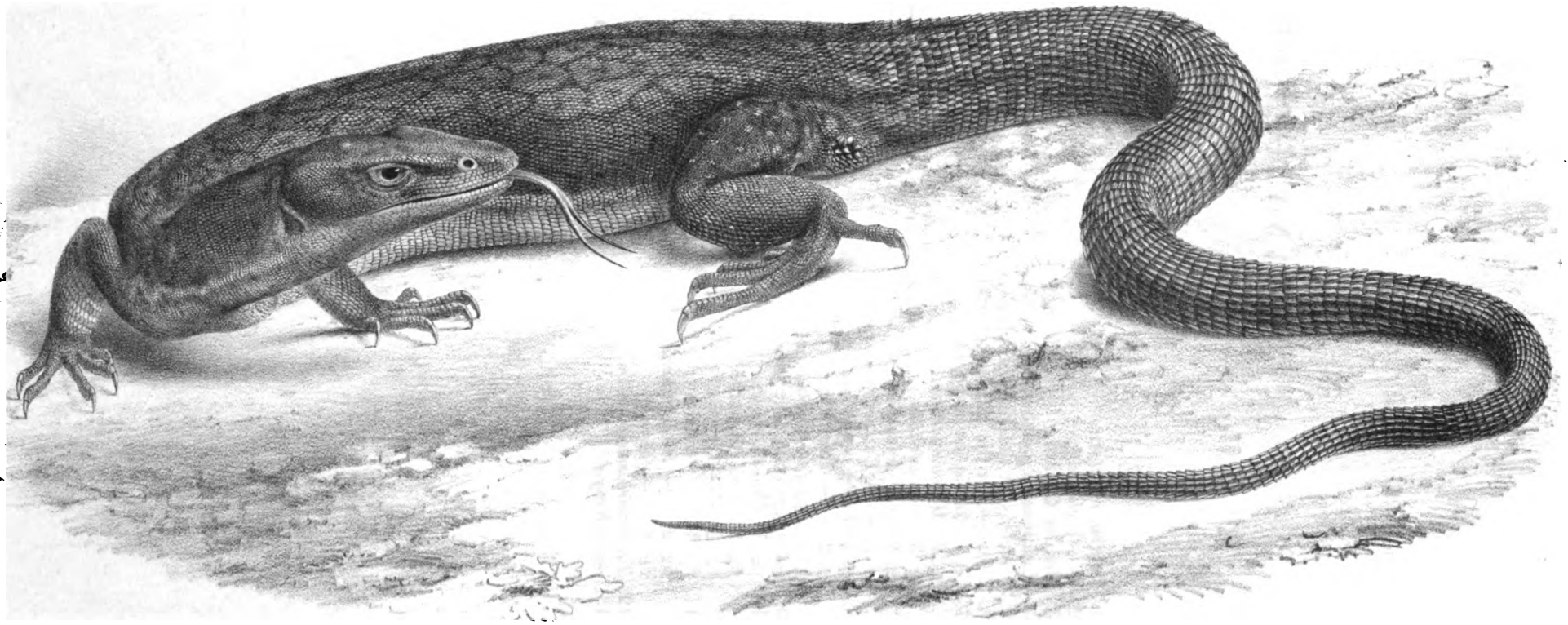
From Zool. Exch. & Yac.

THE species here quoted will be found described at length in my 'Catalogue of the Specimens of Lizards in the Collection of the British Museum,' London, 1845, 12mo, above cited, or in the Papers of Dr. Peters, Dr. Günther, or Dr. Steindachner, quoted after the species they have described. Those marked with an † are not in the British Museum Collection.

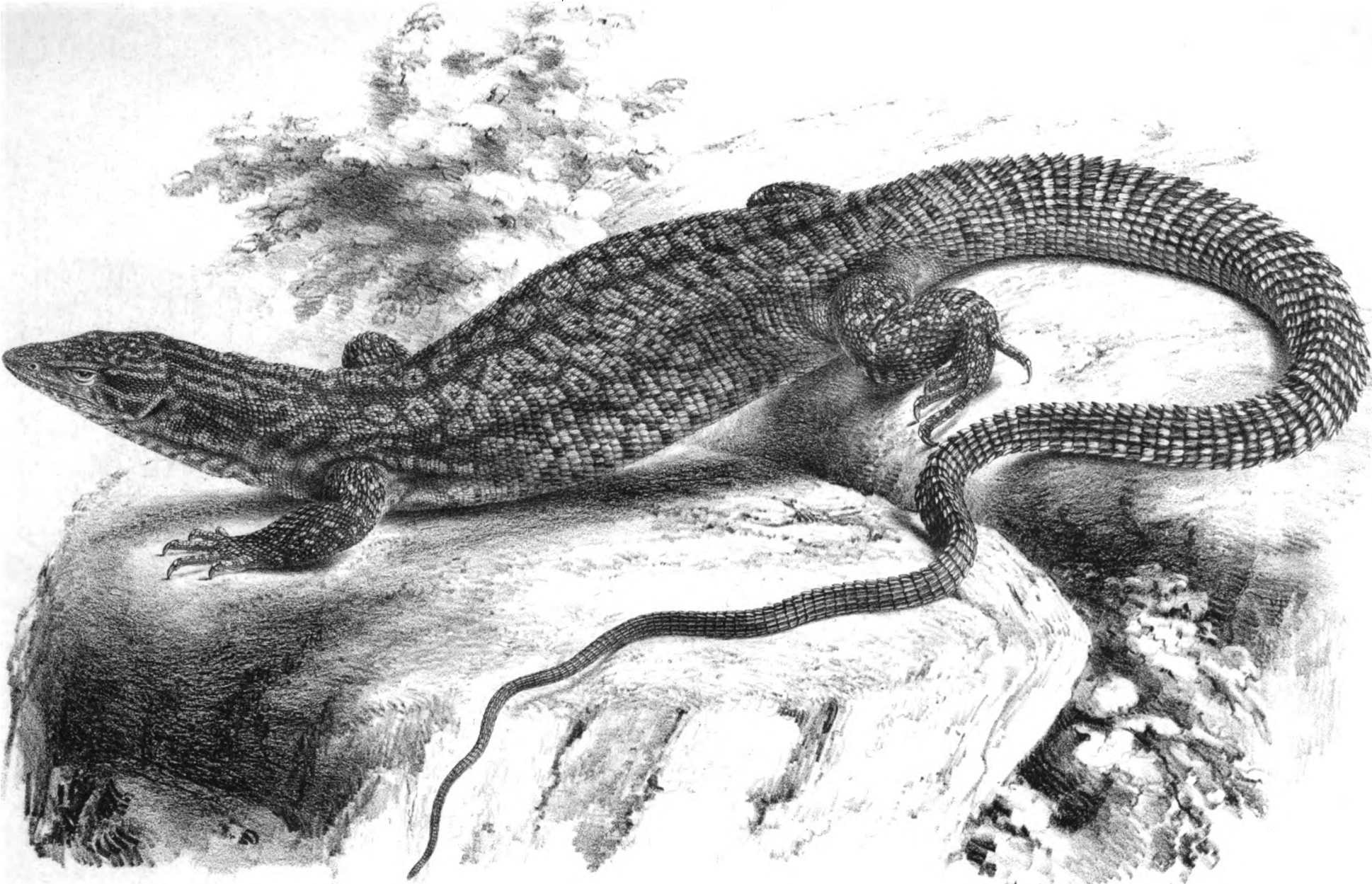
In the Plates without numbers to the figures the names are inserted under the figure; and when there are two figures, the upper name belongs to the upper, and the lower to the lower figure.

EXPLANATION OF PLATES.

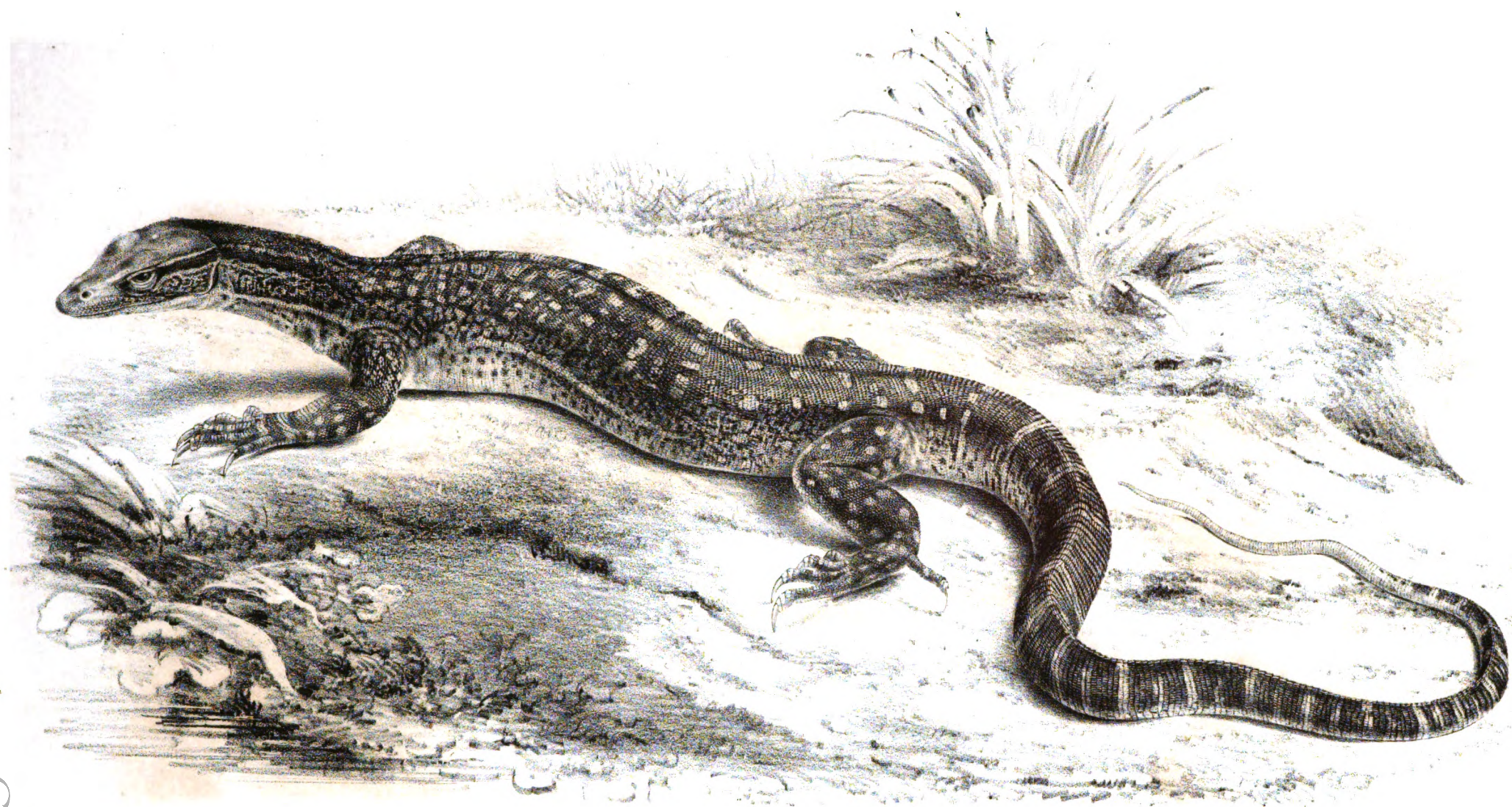
- Tab. 1. *Odatria punctata*.
Tab. 2. — *ocellata*.
Tab. 3. *Monitor Gouldii*.
Tab. 4. *Hydrosaurus giganteus*.
Tab. 5. (destroyed at the Lithographer's).
Tab. 6. (destroyed at the Lithographer's).
Tab. 7. fig. 1. *Carlia melanopogon*.
fig. 2. *Mococa microtis*.
fig. 3. — *ocellata*.
fig. 4. — *zelandica*.
fig. 5. — *Entrecastreauxii*.
Tab. 8. fig. 1. *Lialis punctulata*.
fig. 2. — *Burtonii*.
fig. 3. *Pygopus squamiceps*.
Tab. 9. *Hemisphæriodon Gerrardii*.
Tab. 10. fig. 1. *Hinulia elegans*.
fig. 2. — *inornata*.
fig. 3. — *Greyii*.
Tab. 11. fig. 1. — *ornata*.
fig. 2. — *Richardsonii*.
fig. 3. — *tenuis*.
Tab. 12. *Tropidolepisma nitidum*.
Tab. 13. — *Kingii*.
Tab. 14. *Tropidolepisma majus*.
Tab. 15. fig. 1. *Hemidactylus depressus*.
fig. 2. — *Brookii*.
fig. 3. *Diplodactylus bilineatus*.
fig. 4. — *ocellatus*.
fig. 5. *Hemidactylus vittatus*.
fig. 6. *Diplodactylus marmoratus*.
Tab. 16. fig. 1. *Edura marmorata* junior.
fig. 2. *Diplodactylus ornatus*.
fig. 3. — *vittatus*.
fig. 4. *Edura marmorata*.
fig. 5. *Strophura spinigera*.
fig. 6. *Edura rhombifera*.
Tab. 17. fig. 1. *Phyllurus inermis*.
fig. 2. — *Myliusii*.
fig. 3. — *platurus*.
Tab. 18. fig. 1. *Grammatophora barbata* junior.
fig. 2. — *angulifera*, var. *adelaidensis*.
fig. 3. — *angulifera*.
fig. 4. — *ornata*.
Tab. 19. fig. 1. *Diporophora bilineata*.
fig. 2. *Lophognathus Gilbertii*.
Tab. 20. *Hatteria punctata*.



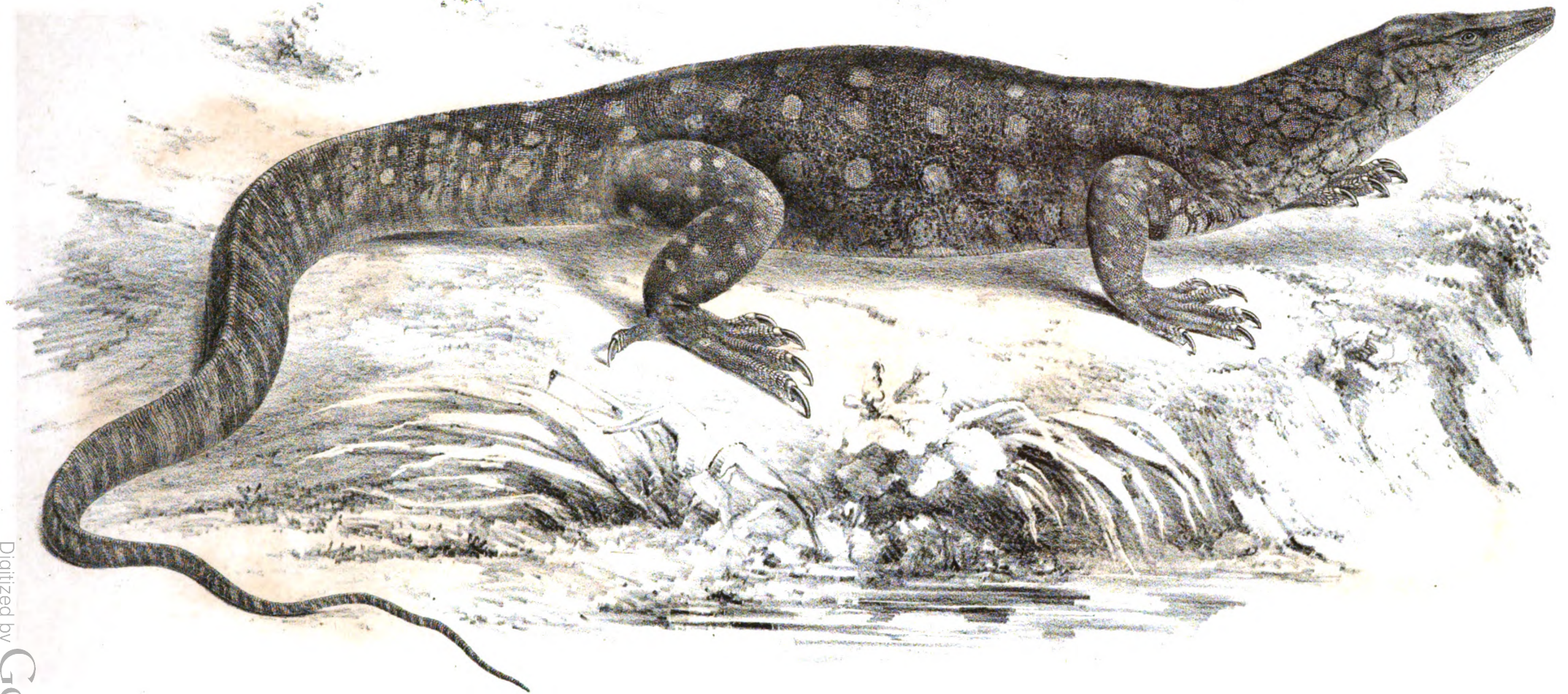
ODATRIA PUNCTATA



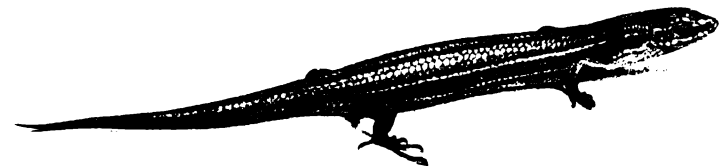
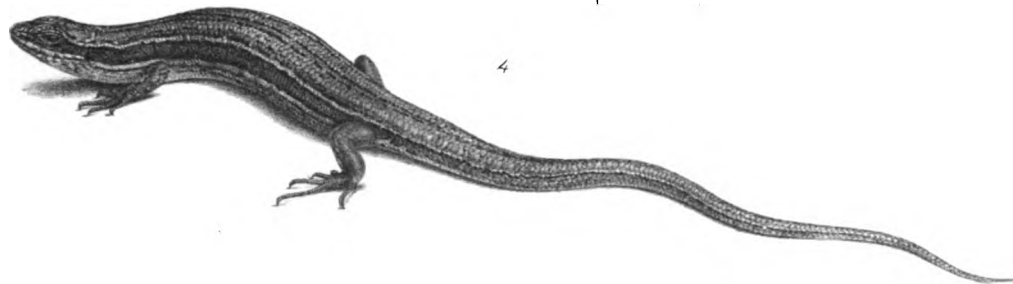
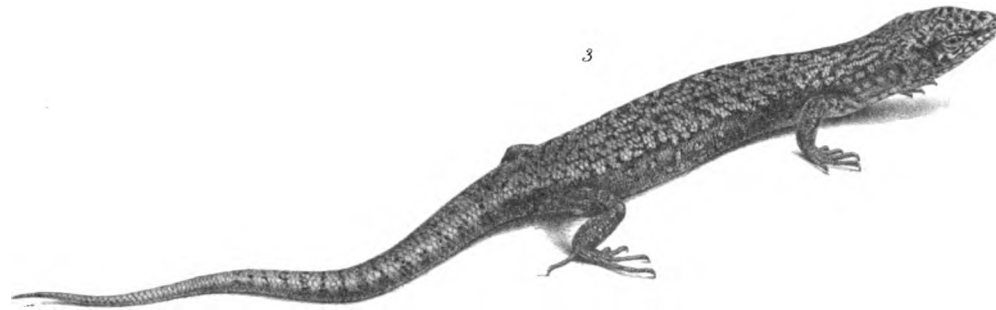
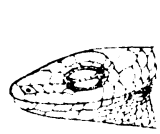
ODATRIA OCELLATA.



MONITOR GOULDII.



HYDROSAURUS GIGANTEUS .



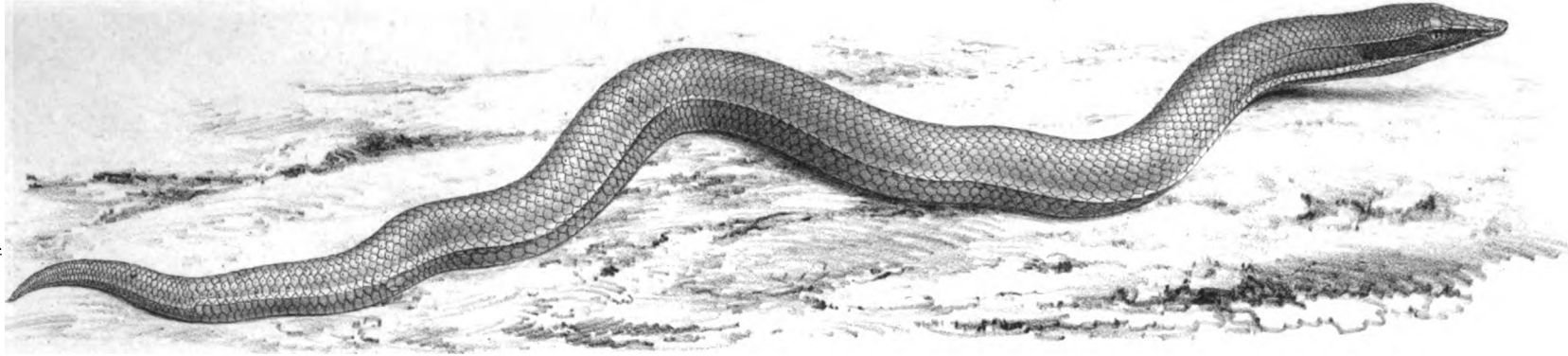
1. CARLIA MELANOPOGON.
4. MOCOA ZELANDICA.

3. MOCOA OCELLATA.

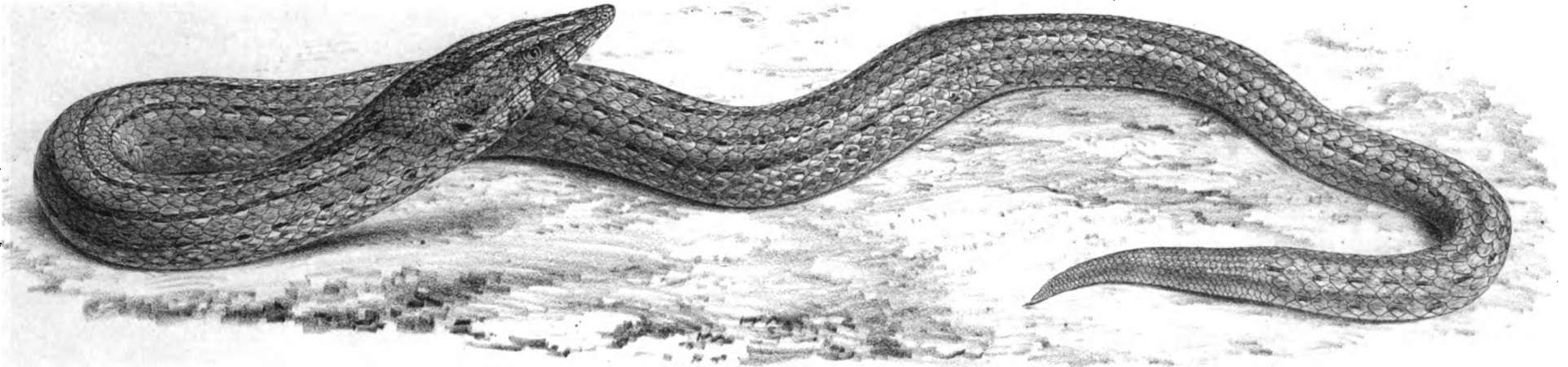
2. MOCOA MICROTIS.
5. „ ENTRECASTREAUXII.

REVUE FRANÇAISE DE ZOOLOGIE.

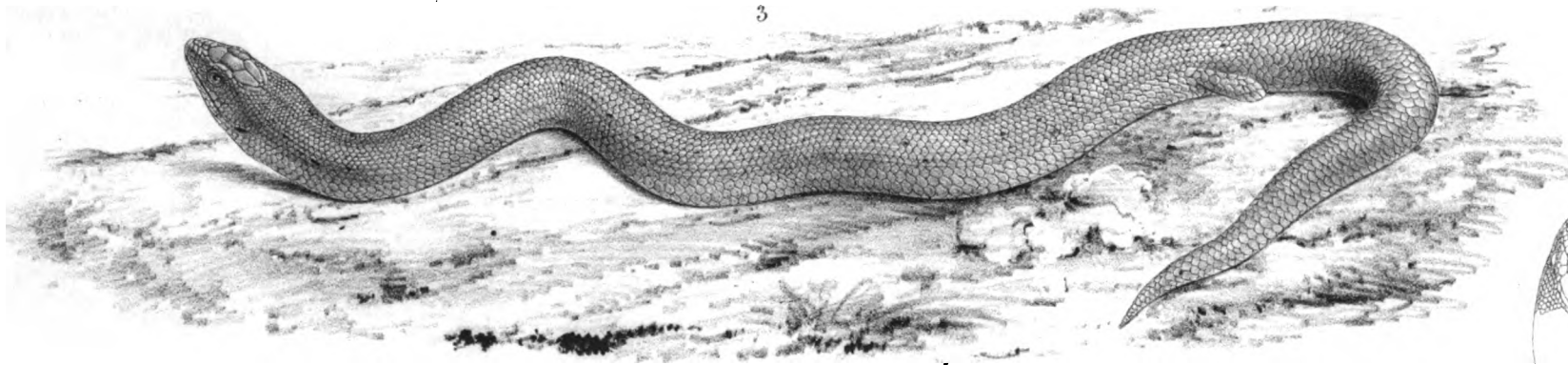
1.



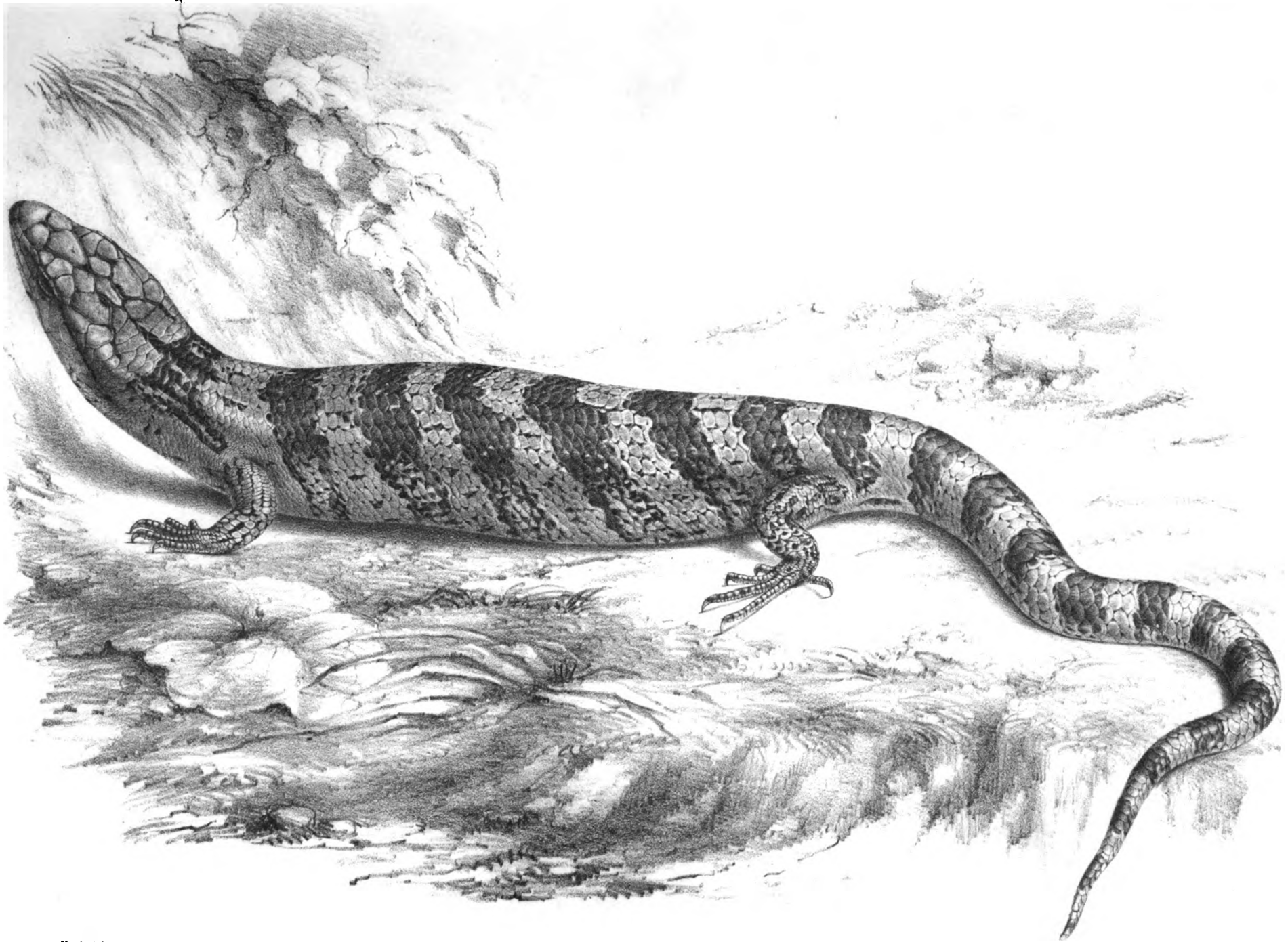
2.



3.



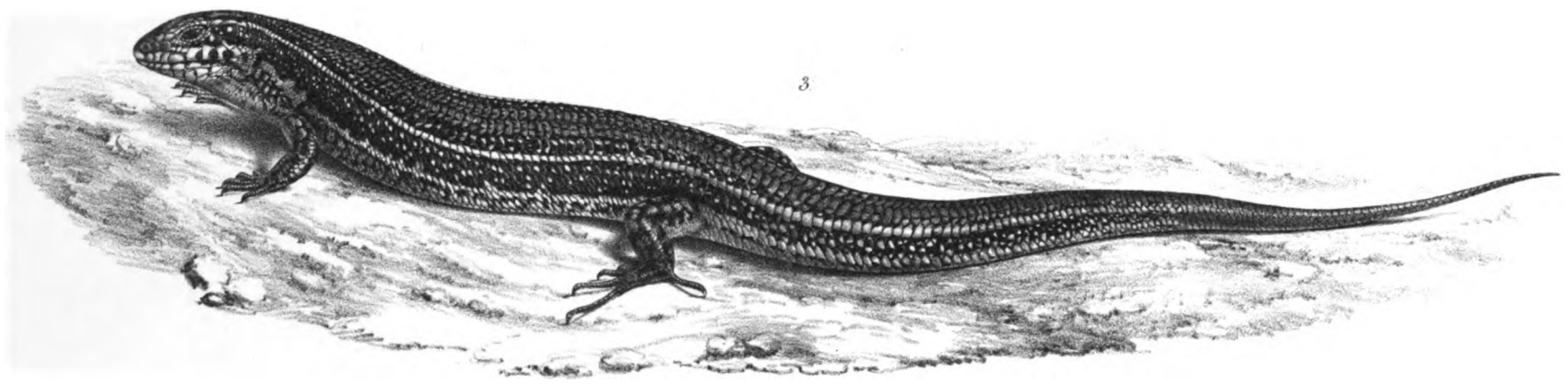
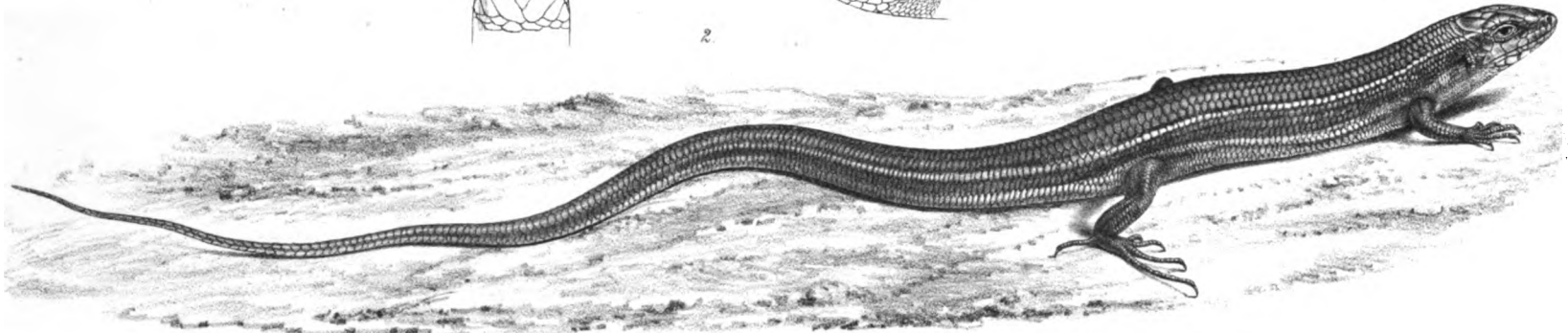
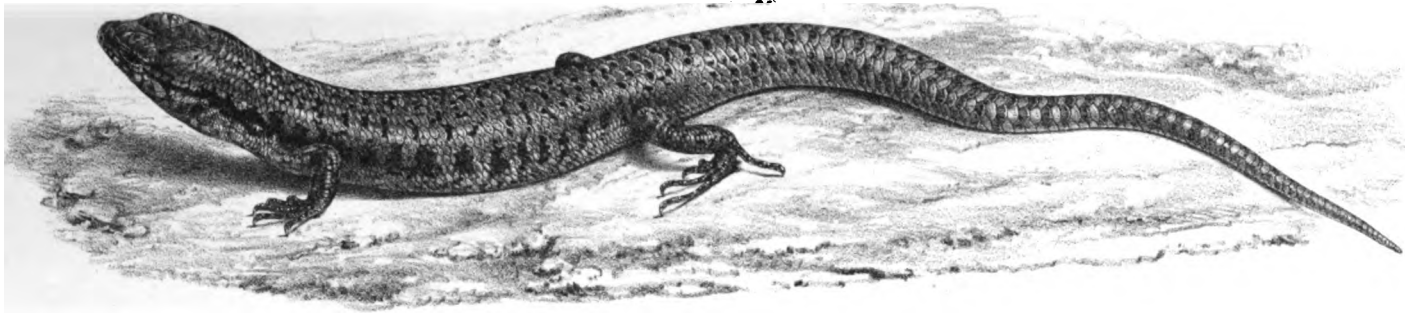
1 LIALIS PUNCTULATA 2 LIALIS BURTONIS. 3 PYGOPUS SQUAMICEPS.



Ford del et lith.

HINNULIA GERRARDII.

Day & Haghe, lith. to the Queen

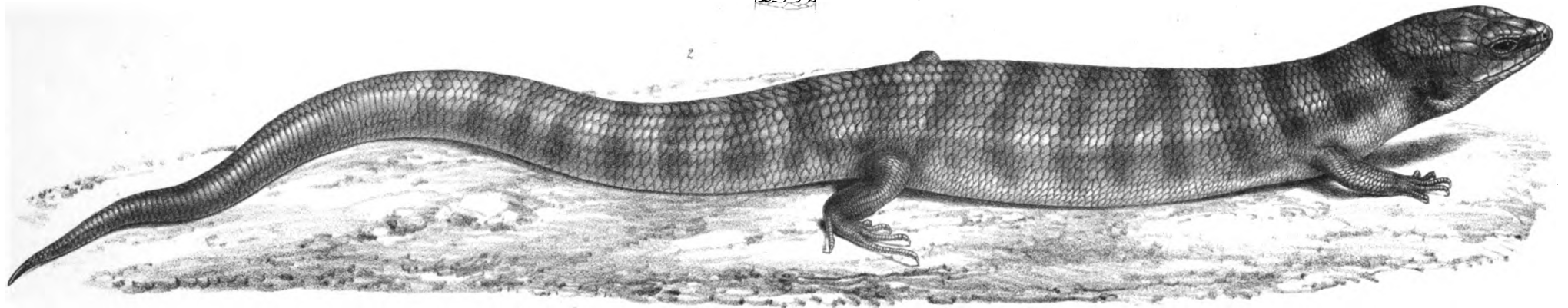
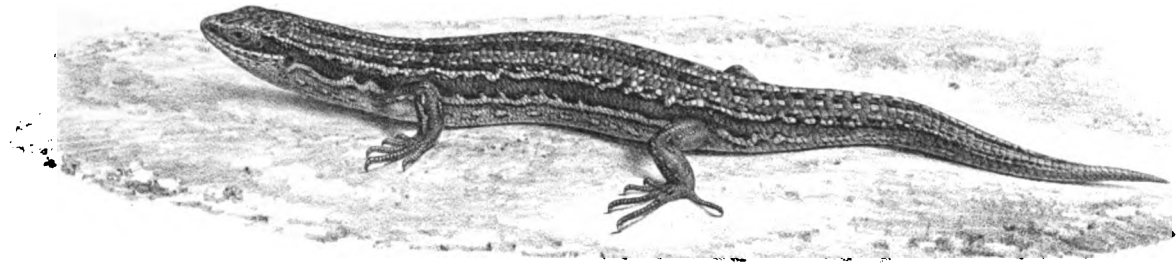


1. HINULIA ELEGANS.

2. HINULIA INORNATA.

3. HINULIA GREYII.

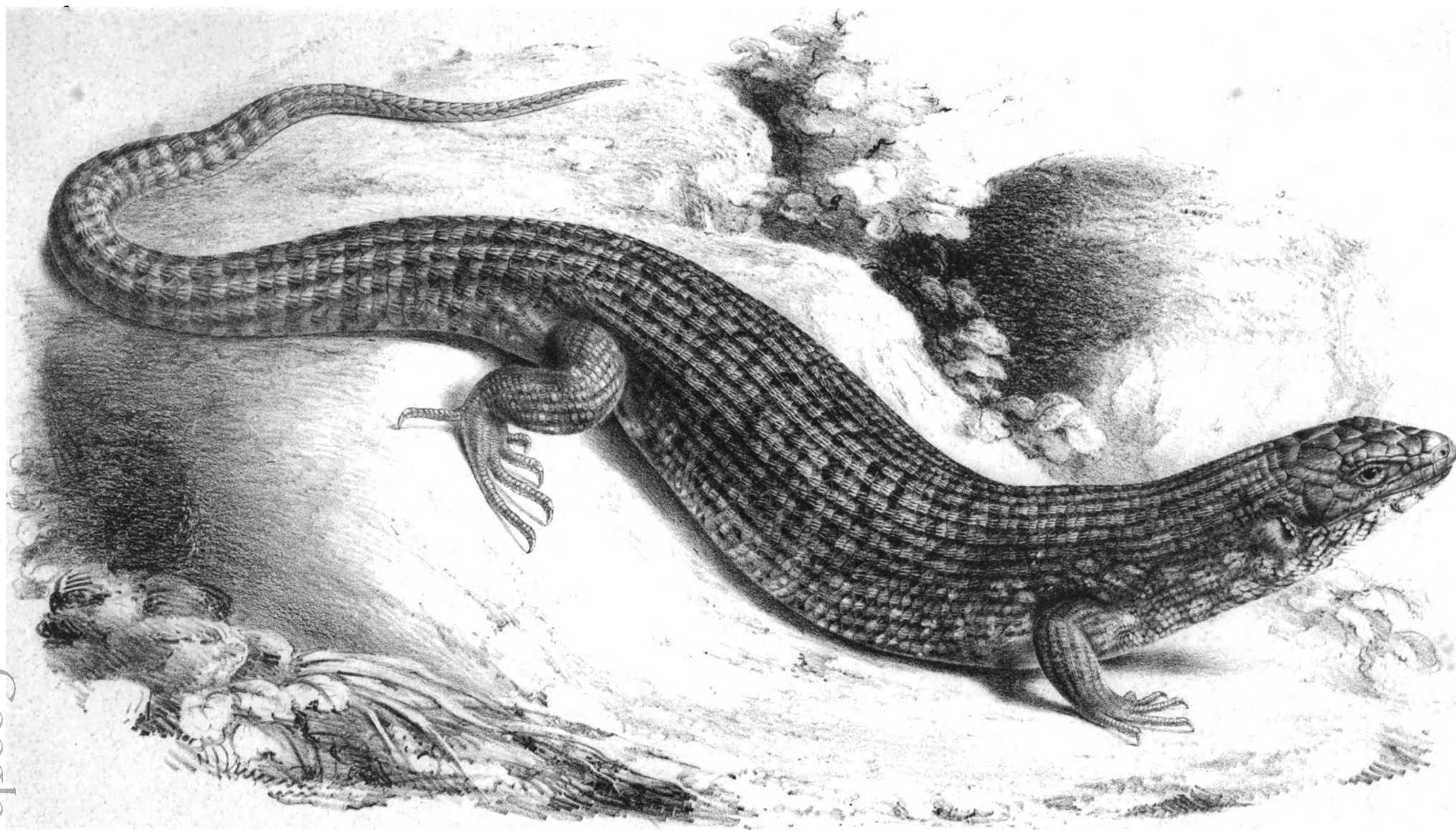
HULLMANDEL & WALTON, LITHO



1. HINULIA ORNATA.

2. HINULIA RICHARDSONII.

3. HINULIA TENUIS.



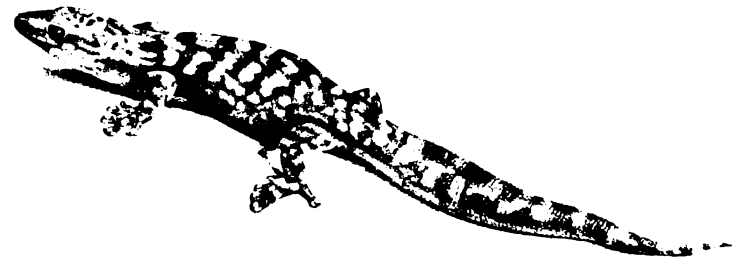
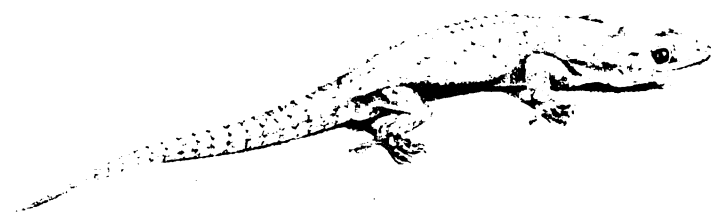
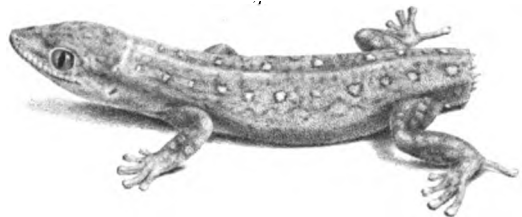
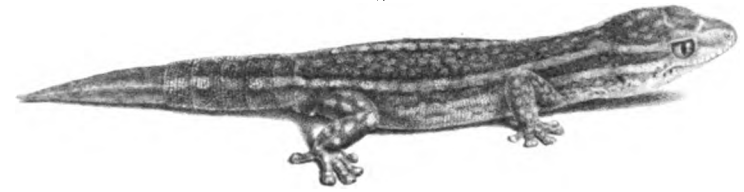
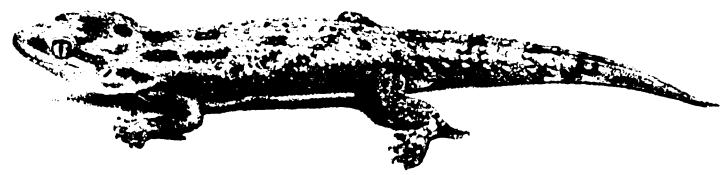
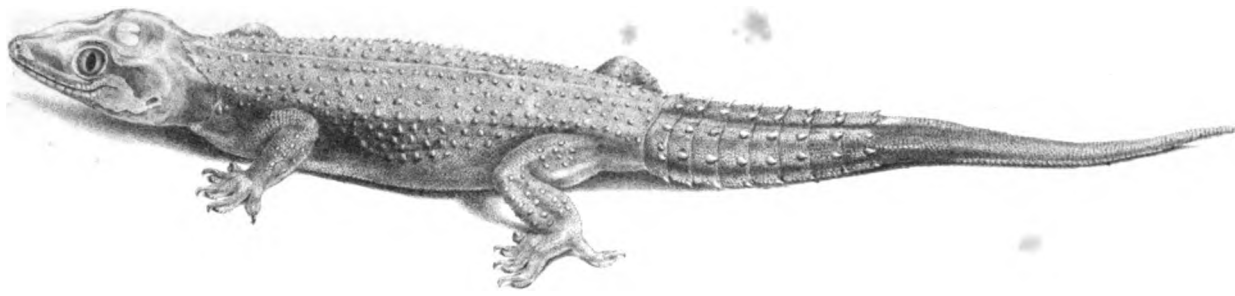
TROPIDOLEPISMA NITIDA.



TROPIDOLEPISMA KINGII.



TROPIDOLEPISMA MAJOR.



2. HEMIDACTYLUS BROOKII.
5. ,, VITTATUS.

1. HEMIDACTYLUS DEPRESSUS.
4. DIPLODACTYLUS OCELLATUS.

3. DIPLODACTYLUS BILINEATUS, ENLARGED.
6. ,, MARMORATUS.

ROSEKAMPEL & WILSON DEL.

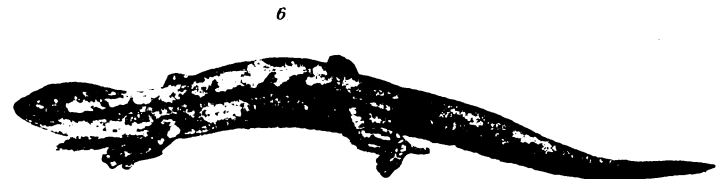
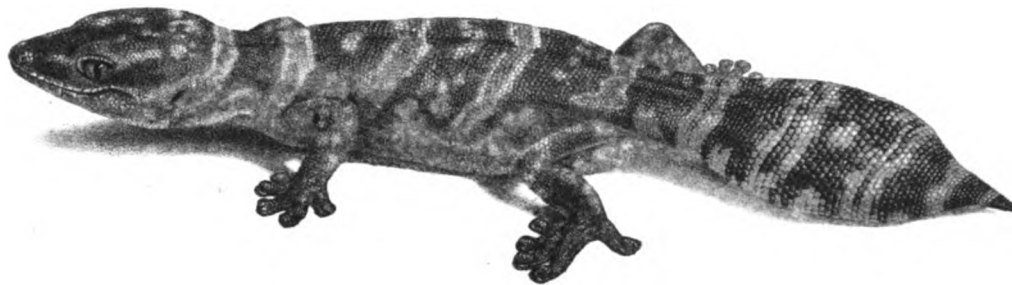
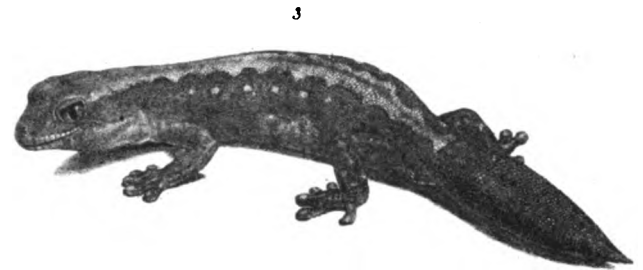
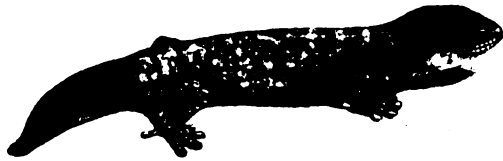
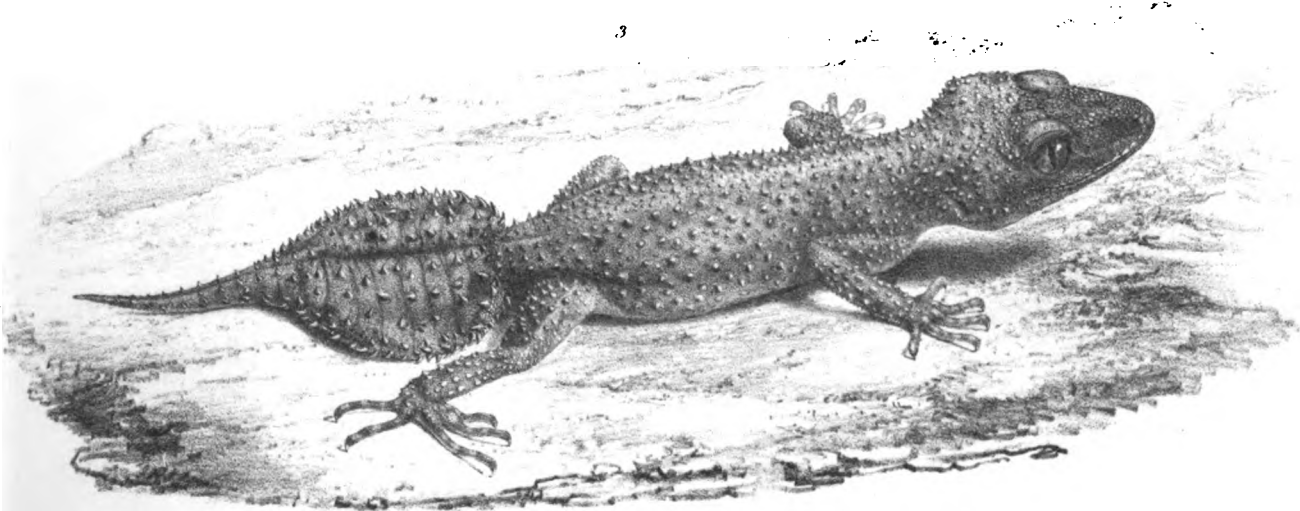
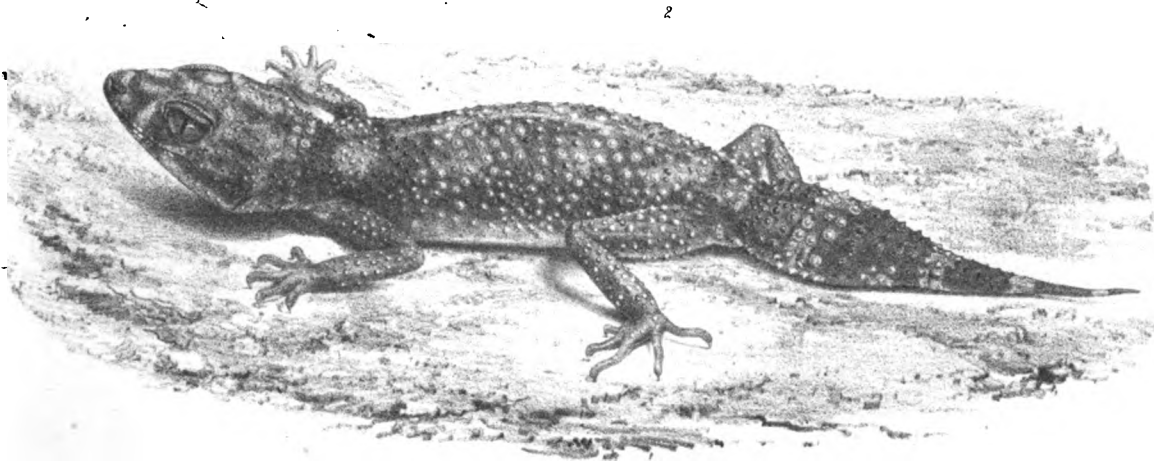
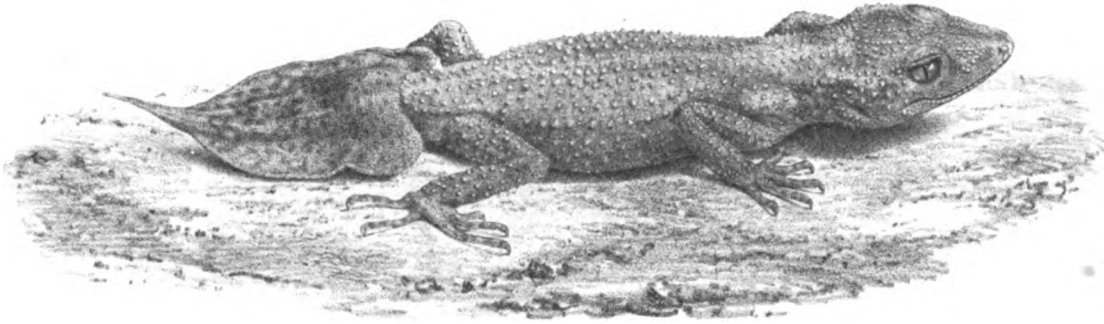


PLATE I. BY A. WALTON, LITHO.

2. DIPLODACTYLUS ORNATUS.
5. STROPHURA SPINIGERA.

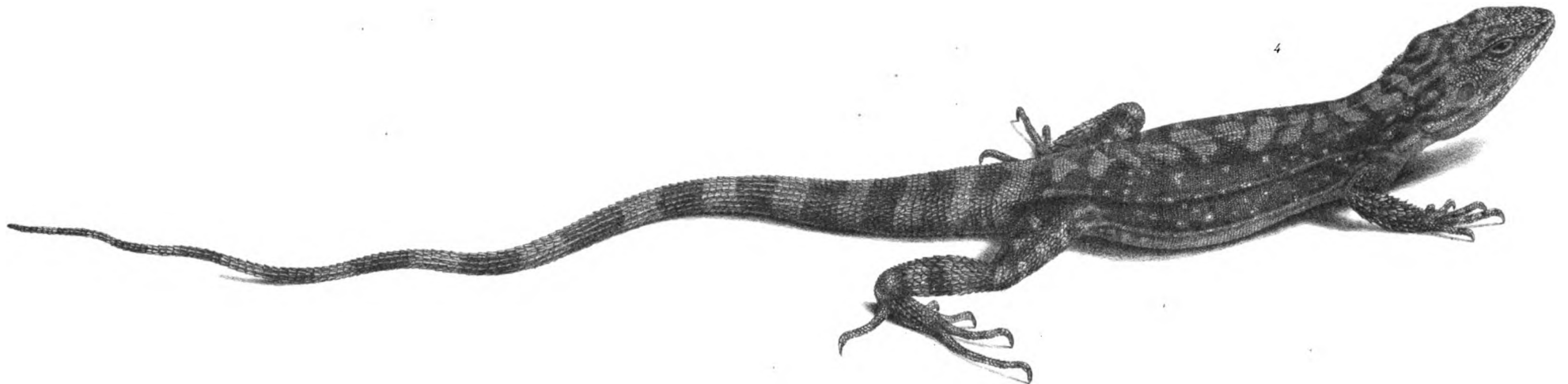
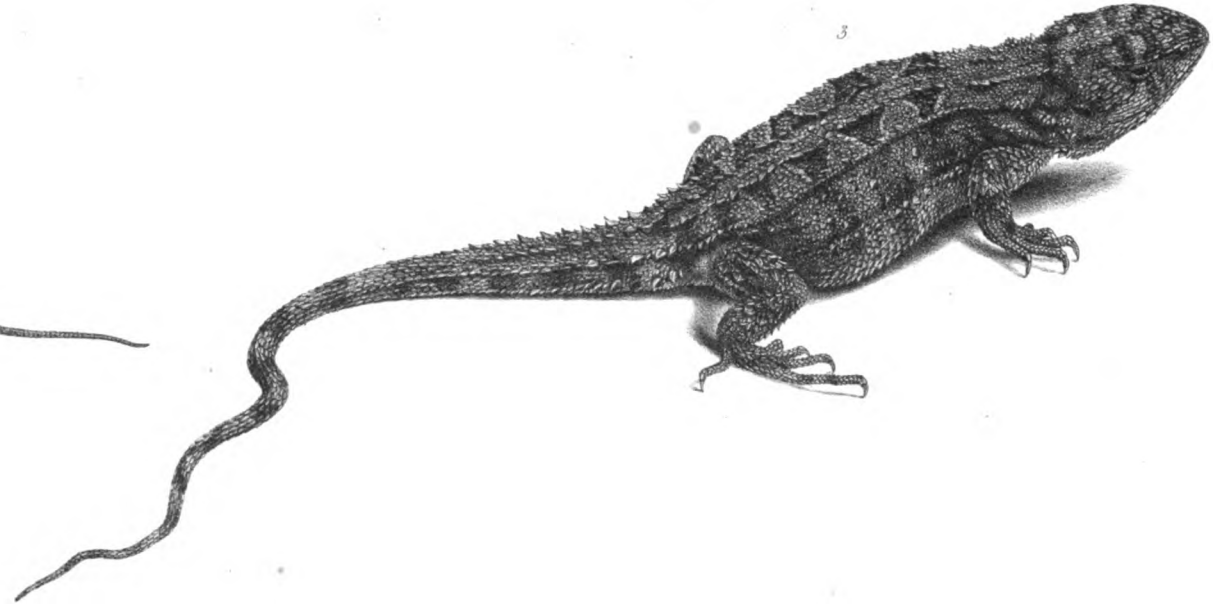
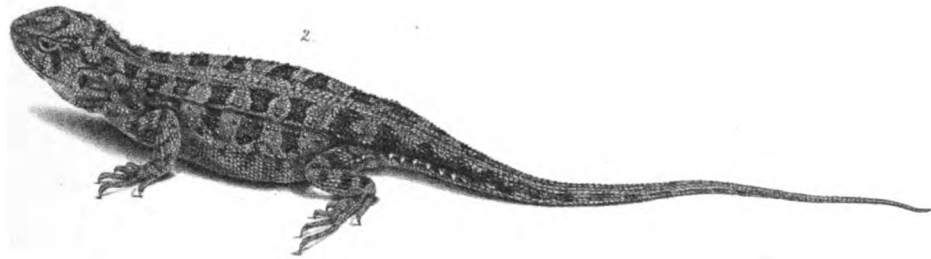
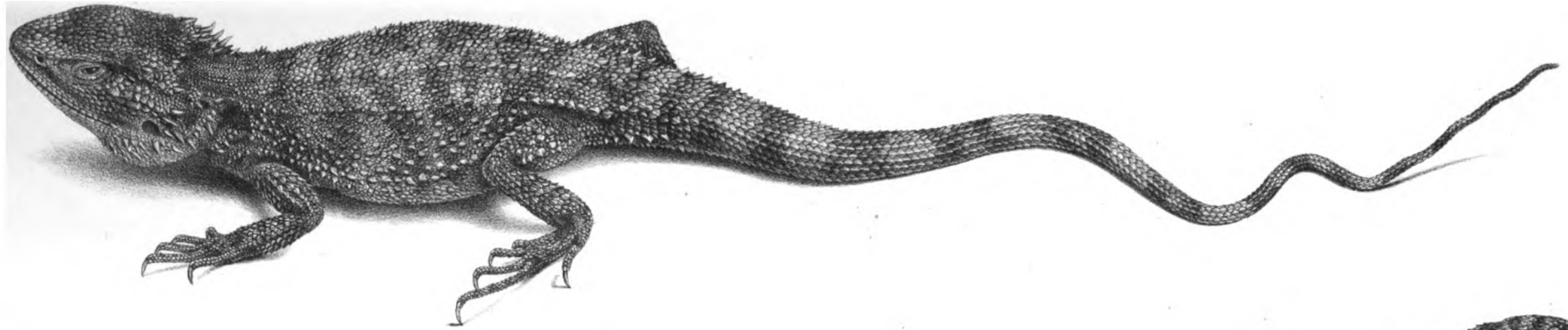
1. EDURA MARMORATA, JUN.?
4. ,, MARMORATA.

3. DIPLODACTYLUS VITTATUS.
6. EDURA RHOMBIFERA.



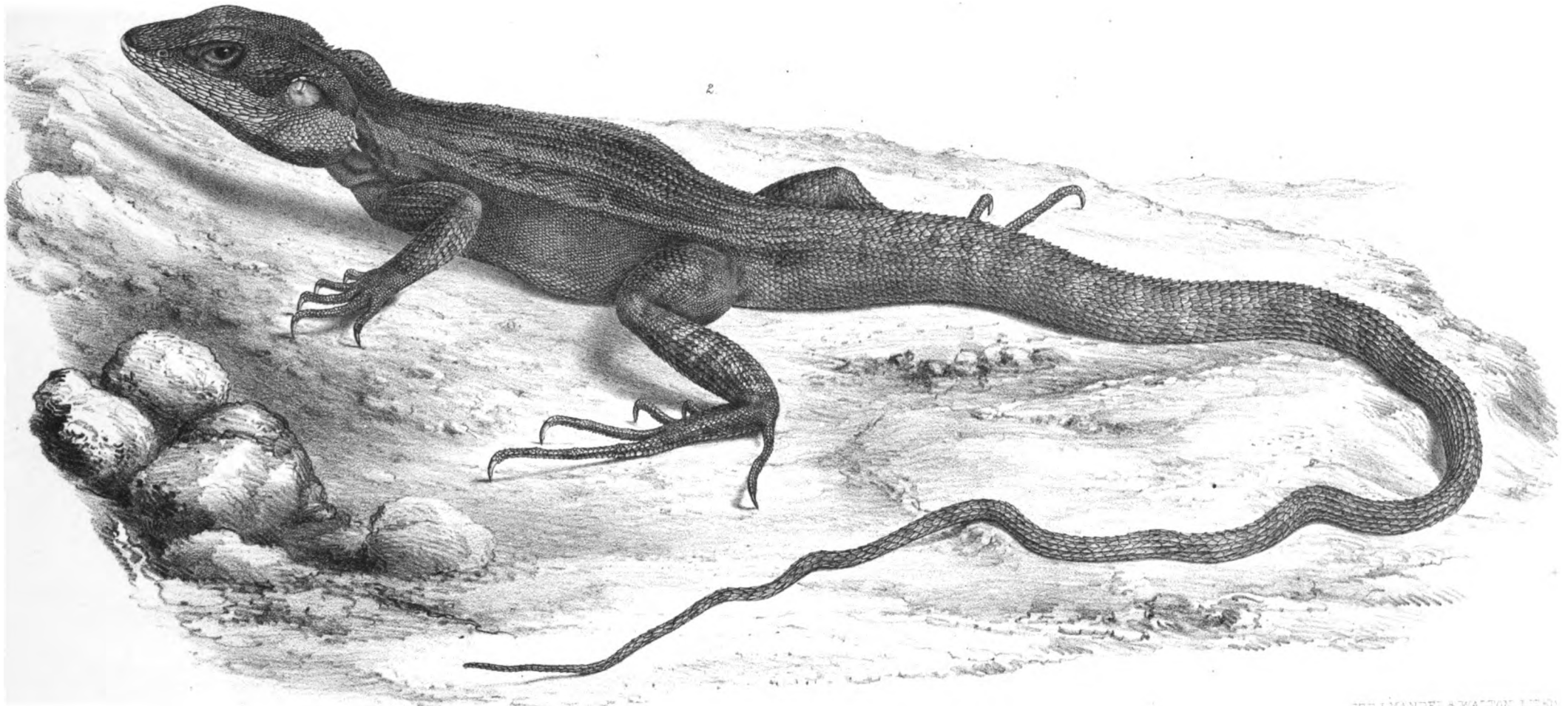
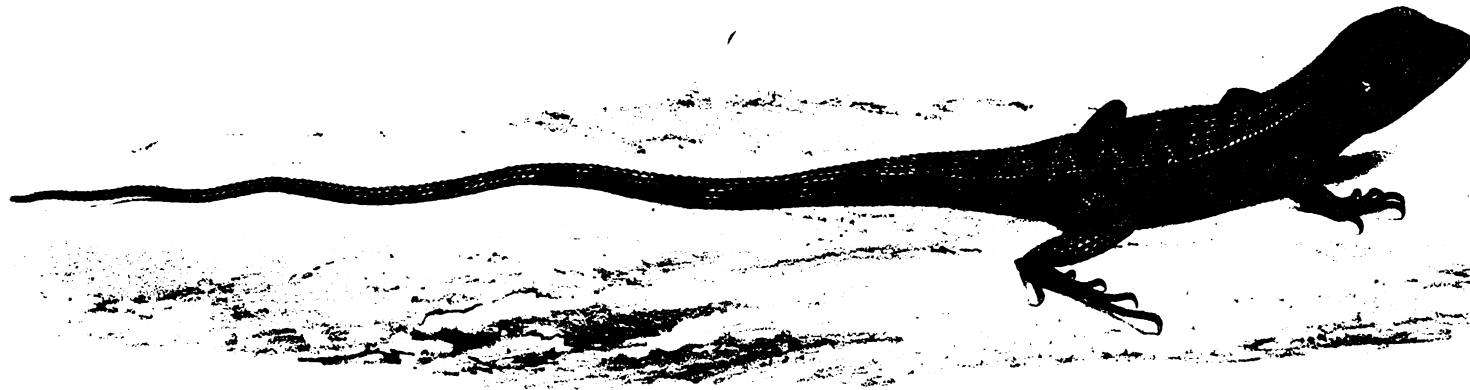
HILLMAN & WATSON LITHO

1. PHYLLURUS INERMIS.
2. " MYLIUSII.
3. " PLATURUS.



1. GRAMMATOPHORA BARBATA, JUN.
2. ,, ADELAIDENSIS.

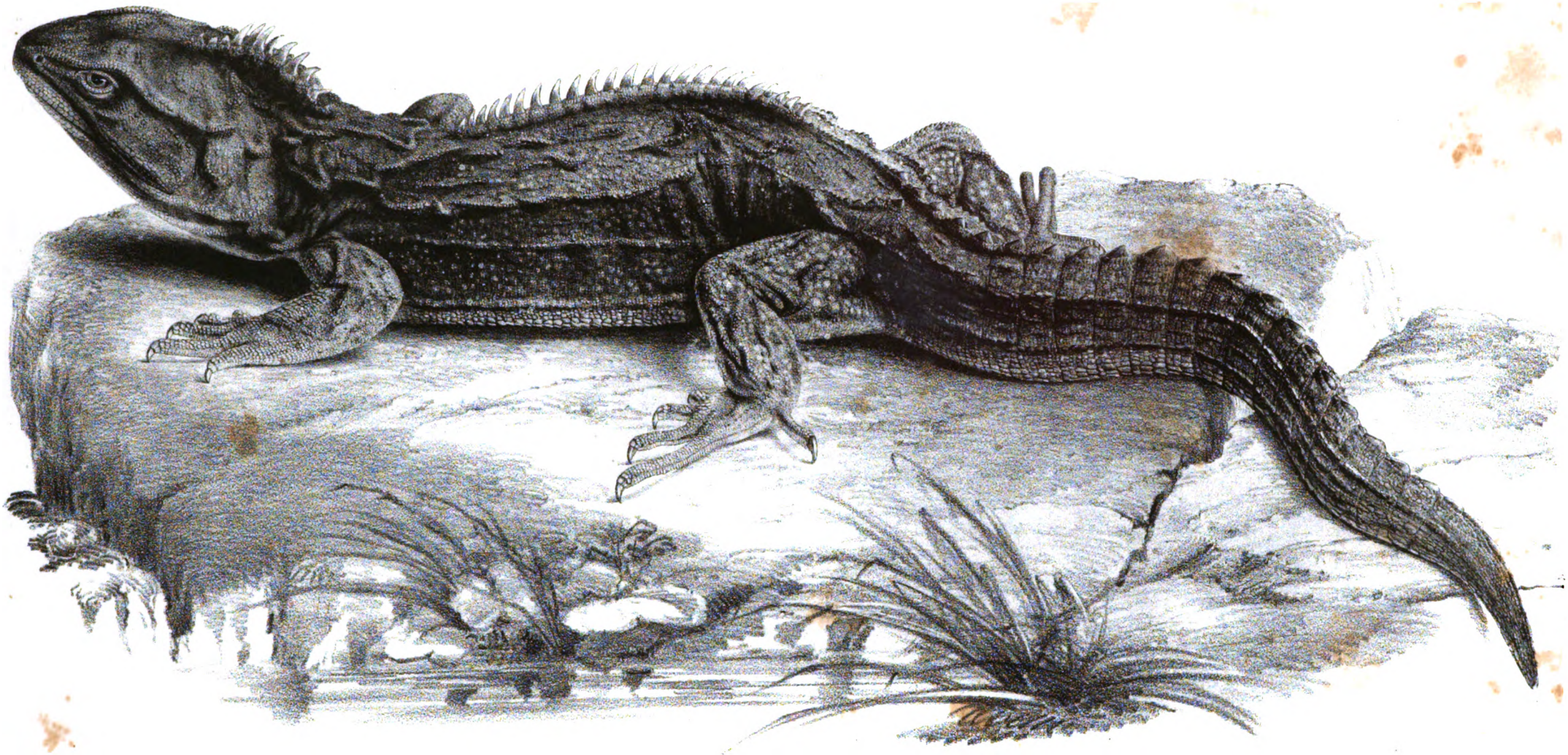
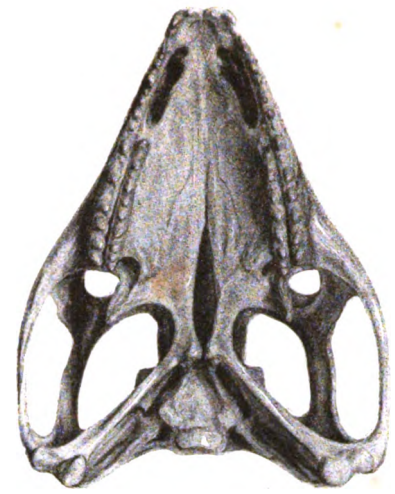
3. GRAMMATOPHORA ANGULIFERA.
4. ,, ORNATA.



1. DIPOROPHORA BILINEATA.

2. LOPHOGNATHUS GILBERTII.

HULL, MANDEL & WALTON LITHO



J Ford del.

HATTERIA PUNCTATA.

C Hullmandel's Patent Lithoupt.