

Eminent men of the day : photographed / [George Charles Wallich].

Contributors

Wallich, George Charles.

Publication/Creation

London : Van Voorst, 1870.

Persistent URL

<https://wellcomecollection.org/works/y6fyjyhq>

License and attribution

This work has been identified as being free of known restrictions under copyright law, including all related and neighbouring rights and is being made available under the Creative Commons, Public Domain Mark.

You can copy, modify, distribute and perform the work, even for commercial purposes, without asking permission.



Wellcome Collection
183 Euston Road
London NW1 2BE UK
T +44 (0)20 7611 8722
E library@wellcomecollection.org
<https://wellcomecollection.org>

EMINENT MEN OF THE DAY



PHOTOGRAPHED

BY

C. C. WALLICH, M.D.

SCIENTIFIC SERIES.

BY PA. 41 (2)



ACCESSION NUMBER

PRESS MARK

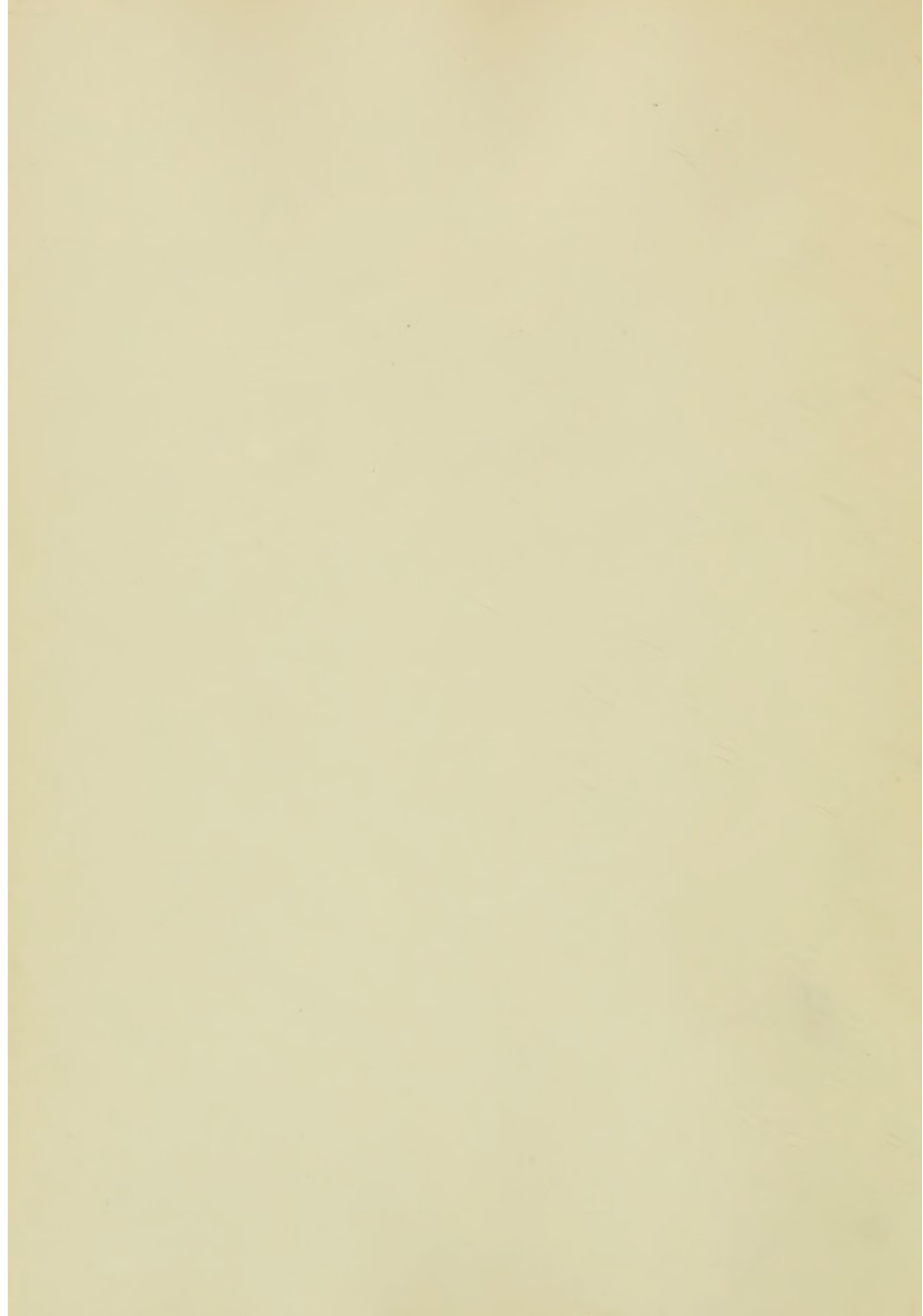


22101273689



Digitized by the Internet Archive
in 2016

<https://archive.org/details/b24866386>



8358

EMINENT MEN OF THE DAY.

PHOTOGRAPHED

BY

G. C. WALLICH, M.D.

SCIENTIFIC SERIES.

LONDON:
JOHN VAN VOORST, PATERNOSTER ROW.
MDCCCLXX.

~~Galley~~

BYPA.41 (2)



THE present Volume, comprising portraits of Men eminent in SCIENCE, is submitted to the Public as the first of a Series in which it is proposed to group together, with reference to the various departments in which they have achieved renown, photographic likenesses of the leading MEN OF THE DAY.

Each Volume of this series will be quite distinct and in itself complete.

The aim of the work being to supply likenesses which shall be both characteristic, free from some errors in taste but too frequently manifest in photographic portraiture, and trustworthy as records of individual feature and expression; it has been considered preferable to forego the expedients, by means of which it is customary to mask imperfections, rather than to incur the risk, however slight, of impairing a strict fidelity to nature.

For the requirements of the Historian or the Historical Painter, the value of this condition has been deemed sufficient to warrant its adoption.

G. C. WALLICH.

2, *Warwick Gardens,*
Kensington.

May, 1870.



CONTENTS.

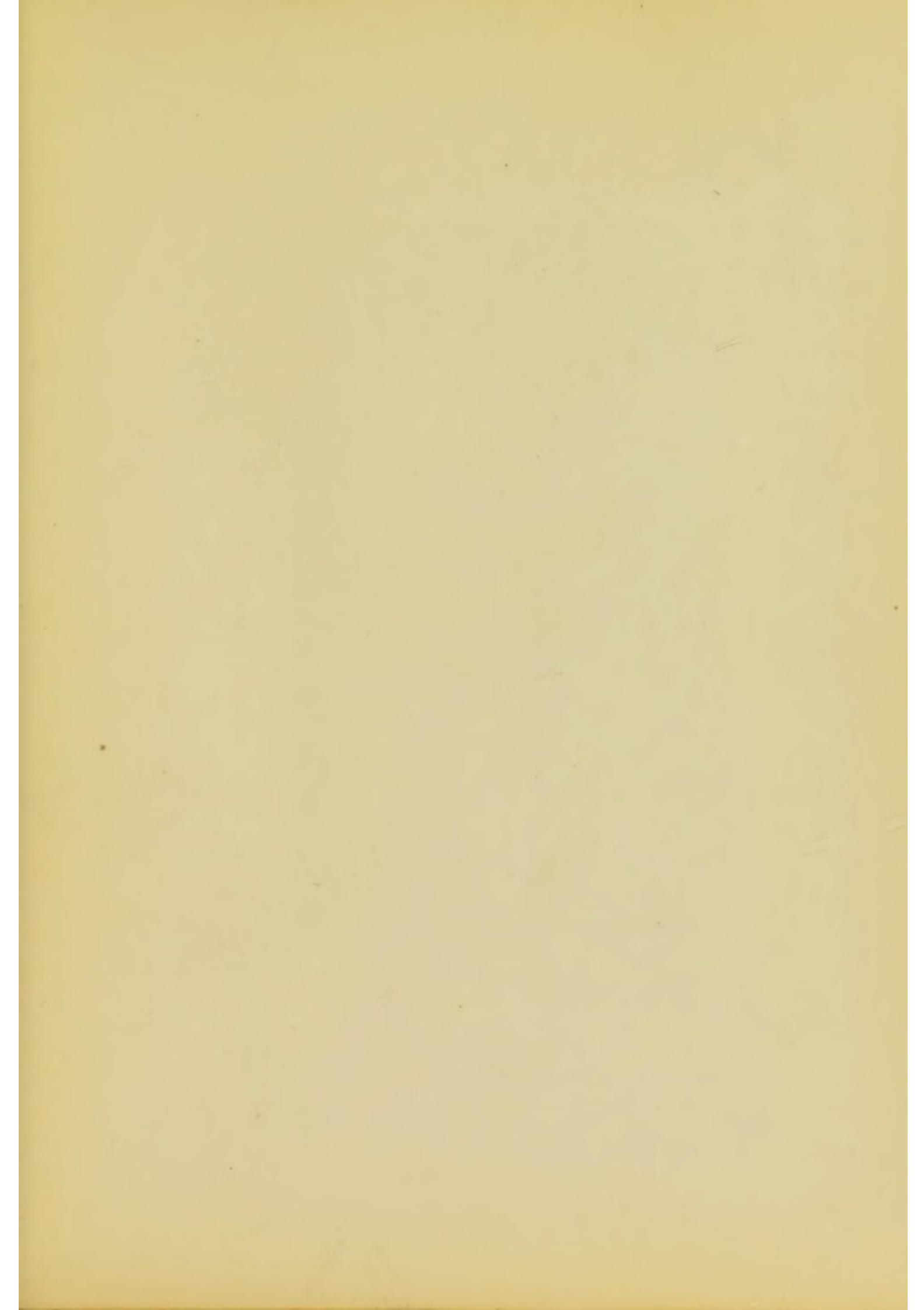
PAGE

- I. General Sir EDWARD SABINE, K.C.B.
President of the Royal Society, &c. &c.
- II. Sir RODERICK IMPEY MURCHISON, Bart, K.C.B., F.R.S.
President of the Royal Geographical Society, &c. &c.
- III. Professor OWEN, D.C.L., F.R.S.
Foreign Associate of the Institute of France, &c. &c.
- IV. GEORGE BENTHAM, F.R.S.
President of the Linnean Society, &c. &c.
- V. THOMAS H. HUXLEY, L.L.D., F.R.S.
President of the Ethnological Society, &c. &c.
- VI. JOSEPH DALTON HOOKER, C.B., D.C.L., L.L.D., F.R.S.
Director of the Royal Gardens, Kew, &c. &c.
- VII. Sir CHARLES LYELL, Bart., F.R.S., &c., &c.
- VIII. JOHN TYNDALL, L.L.D., F.R.S.
Professor of Natural Philosophy in the Royal Inst. of Great Britain, &c. &c.
- IX. Sir WILLIAM LOGAN, F.R.S.
Director of the Geological Survey of Canada, &c. &c.
- X. Professor STOKES, M.A., D.C.L., L.L.D., F.R.S.
Secretary Royal Society, President of the British Association, 1869-70.
- XI. Professor A. C. RAMSAY, L.L.D., F.R.S., F.G.S.
Director of the Geological Survey of England and Wales, &c. &c.
- XII. Viscount WALDEN, F.L.S.
President of the Zoological Society, &c. &c.
- XIII. WILLIAM LASSELL, F.R.S.
President of the Astronomical Society, &c. &c.
- XIV. JOSEPH PRESTWICH, F.R.S.
President of the Geological Society, &c. &c.
- XV. The Rev. J. B. READE, M.A., F.R.S.
President of the Royal Microscopical Society, &c. &c.
- XVI. Professor WILLIAMSON, F.R.S.
President of the Chemical Society, &c. &c.











SIR RODERICK IMPEY MURCHISON, BART., K.C.B., F.R.S.

President of the Royal Geographical Society, &c. &c. &c.











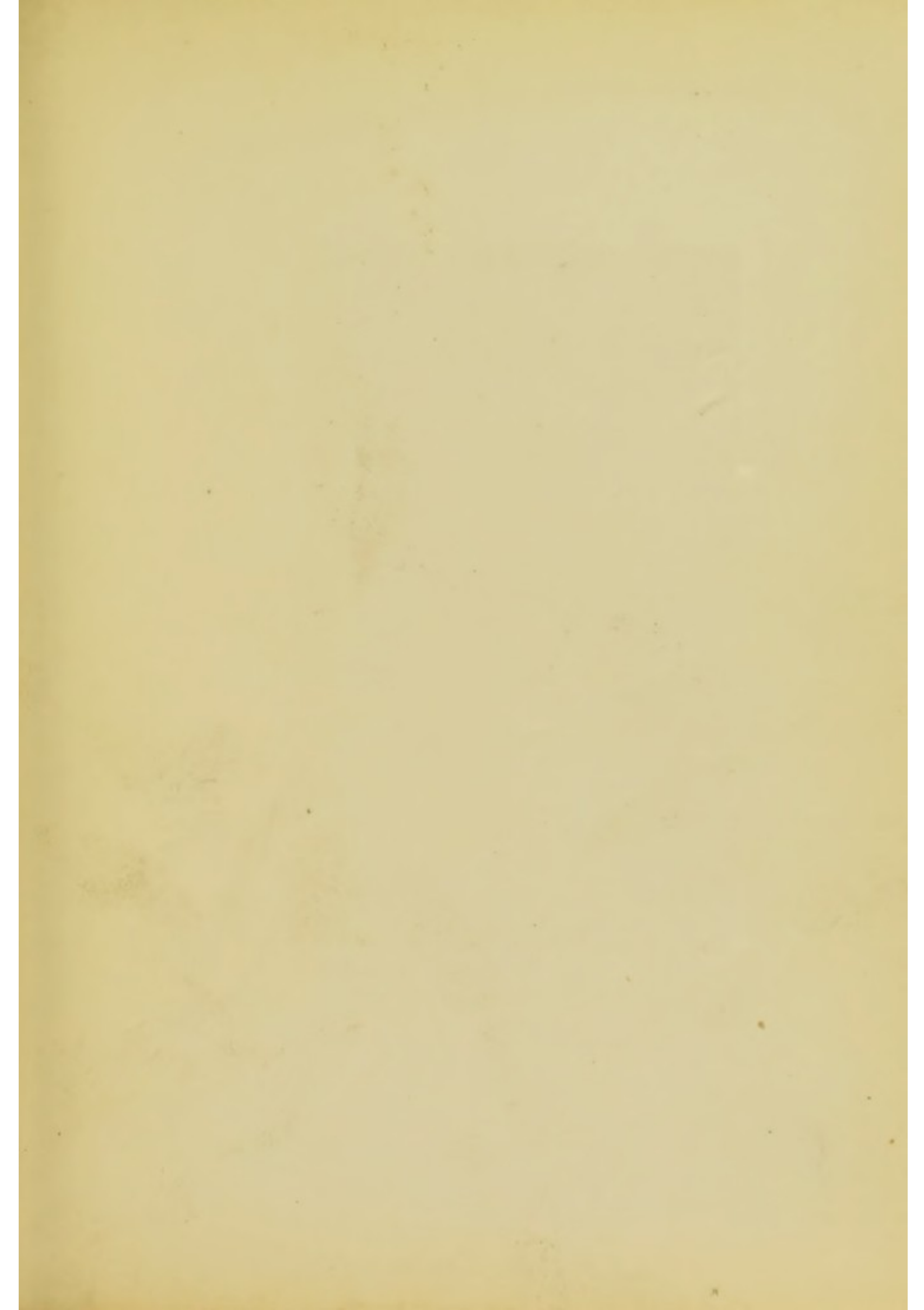


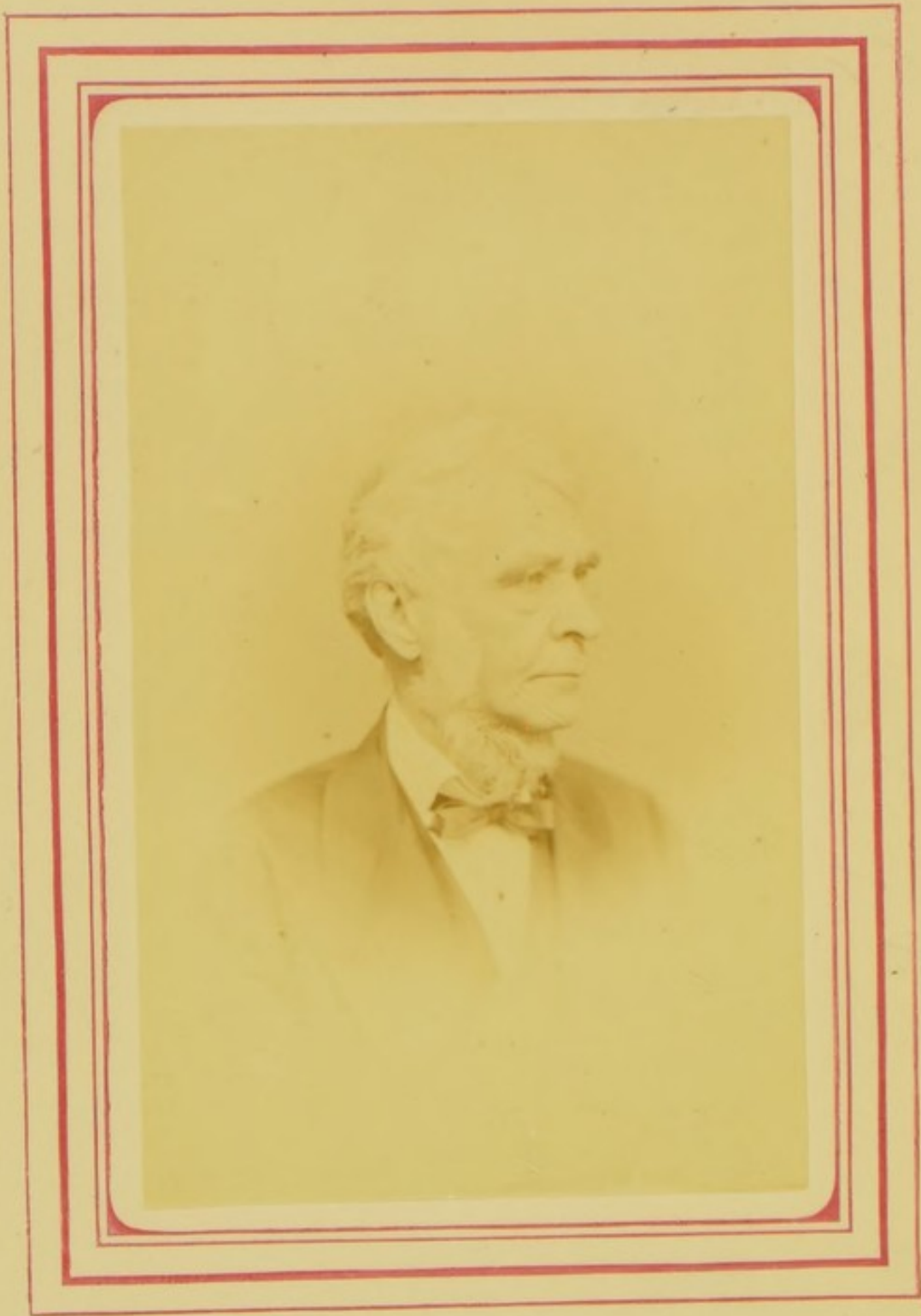
GENERAL SIR EDWARD SABINE, K.C.B.,

President of the Royal Society, &c. &c. &c.









GEORGE BENTHAM, F.R.S.

President of the Linnean Society, &c. &c. &c.













PROFESSOR OWEN, D.C.L., F.R.S.

Foreign Associate of the Institute of France, &c. &c. &c.









JOSEPH DALTON HOOKER, C.B., D.C.L., L.L.D., F.R.S.

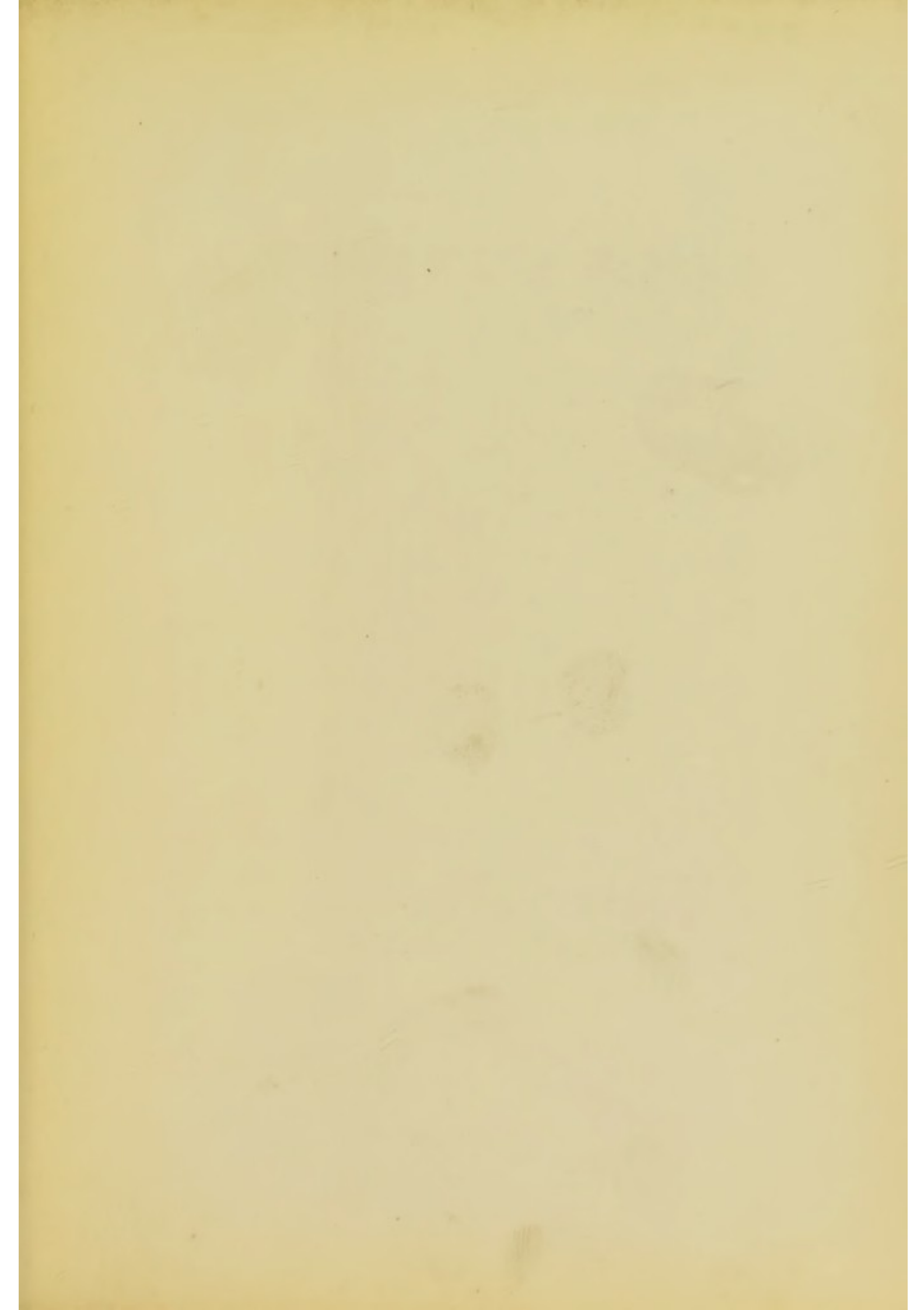
Director of the Royal Gardens, Kew, &c. &c. &c.











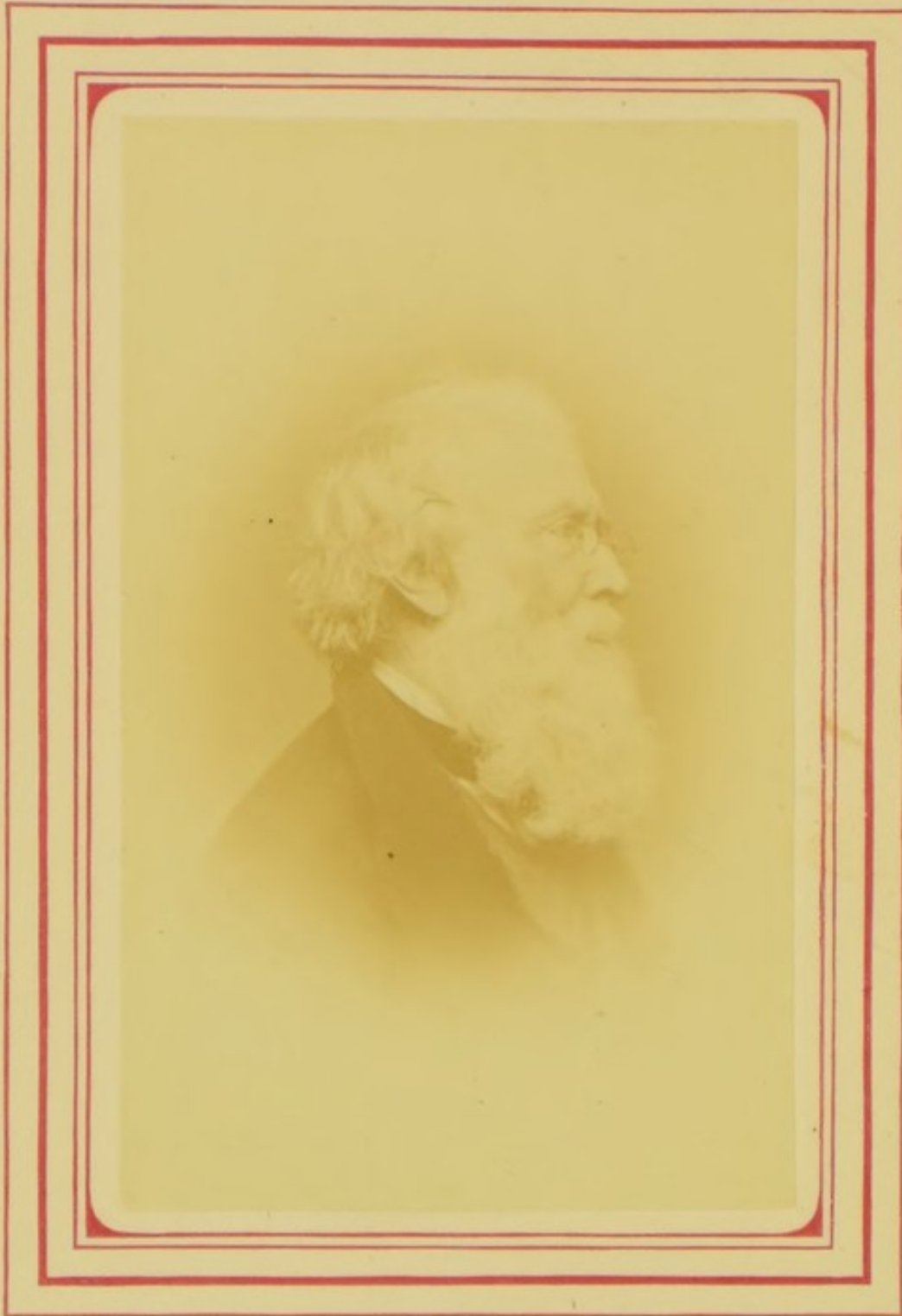


THOMAS H. HUXLEY, L.L.D., F.R.S.
President of the Ethnological Society, &c. &c. &c.









SIR WILLIAM LOGAN, F.R.S.

Director of the Geological Survey of Canada, &c. &c. &c.









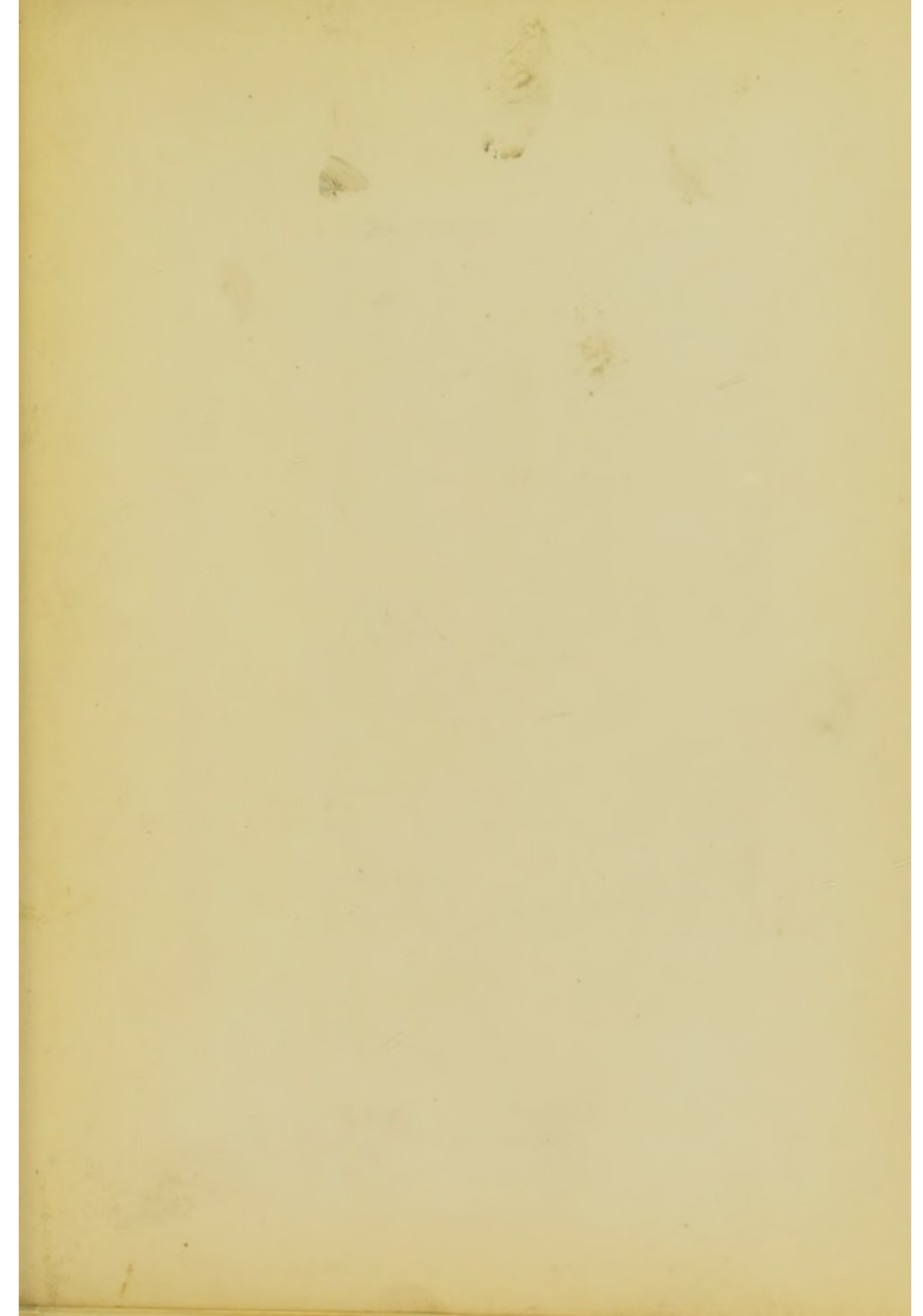




SIR CHARLES LYELL, BART, F.R.S. &c., &c.









VISCOUNT WALDEN, F.L.S.
President of the Zoological Society, &c. &c. &c.

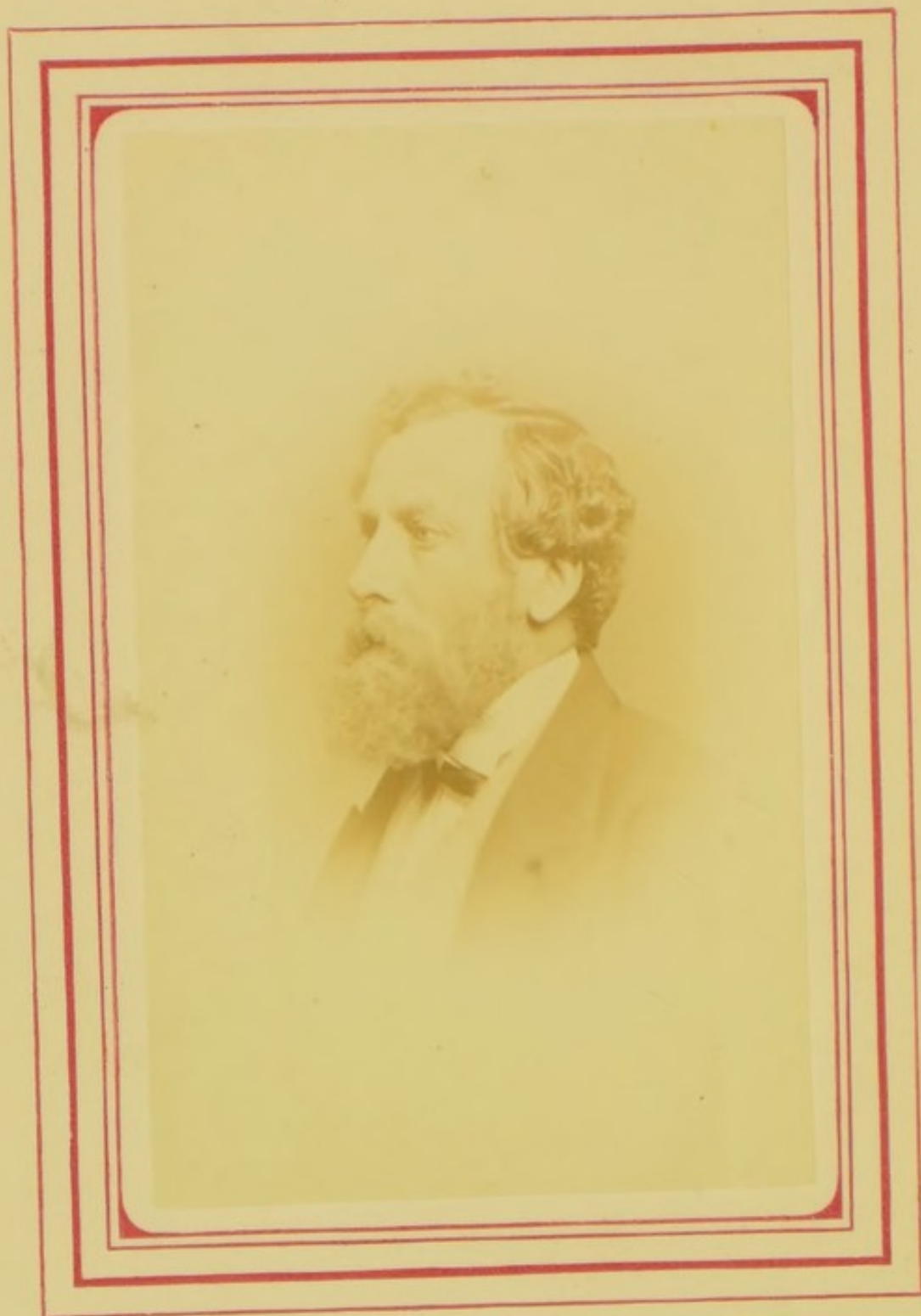












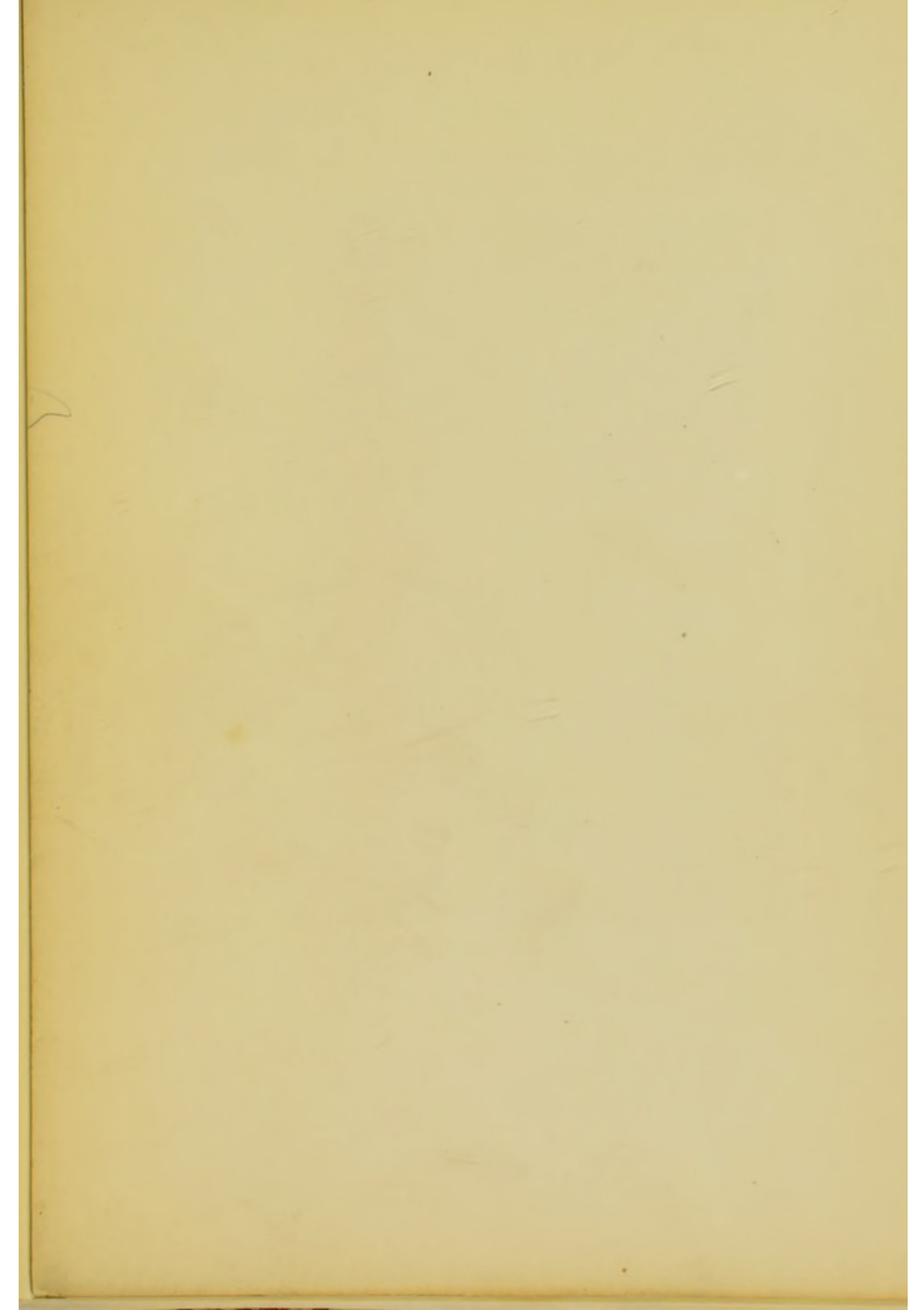
PROFESSOR A. C. RAMSAY, L.L.D., F.R.S., F.G.S.
Director of the Geological Survey of England and Wales, &c. &c. &c.

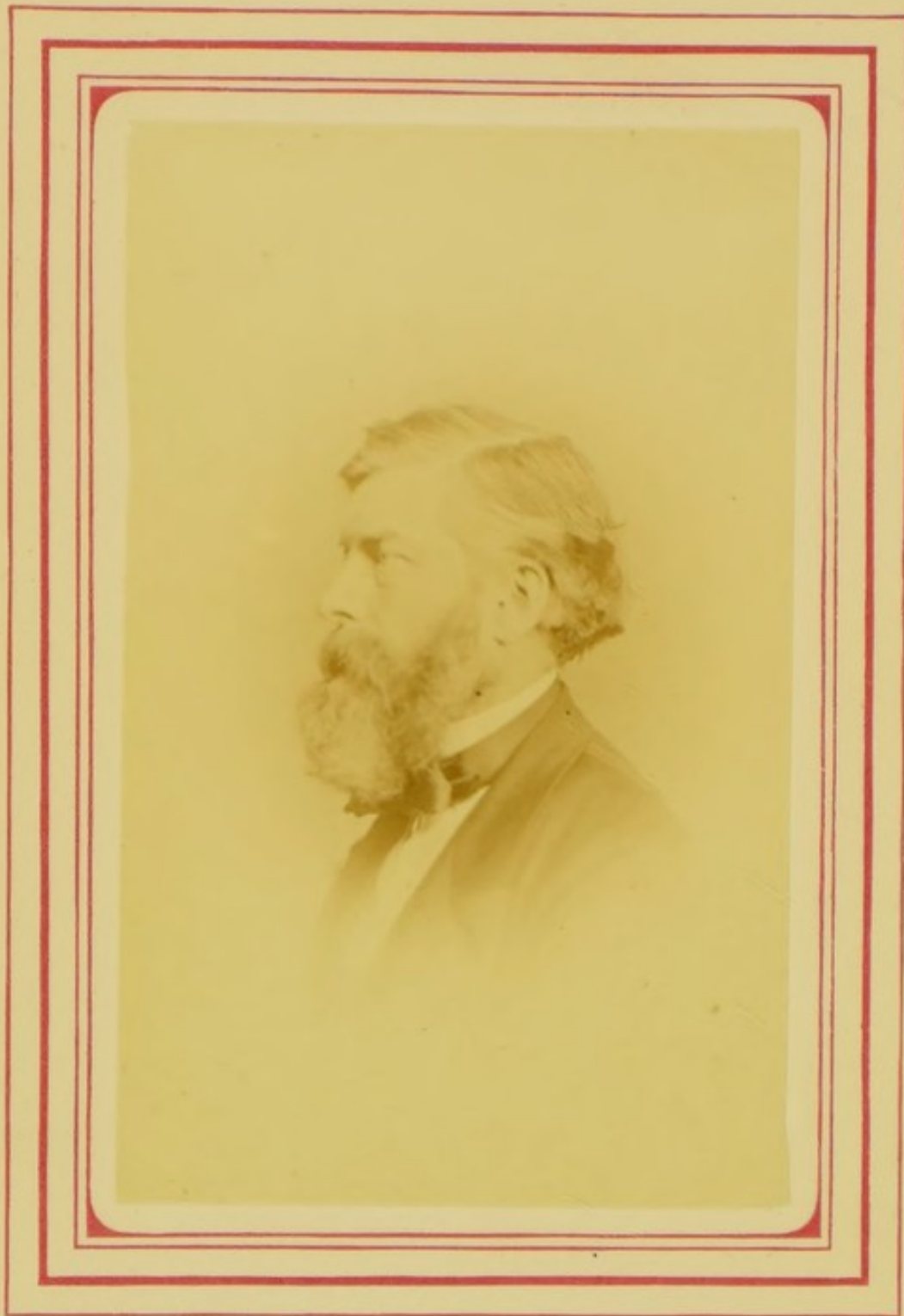












PROFESSOR WILLIAMSON, F.R.S.

President of the Chemical Society, &c. &c. &c.

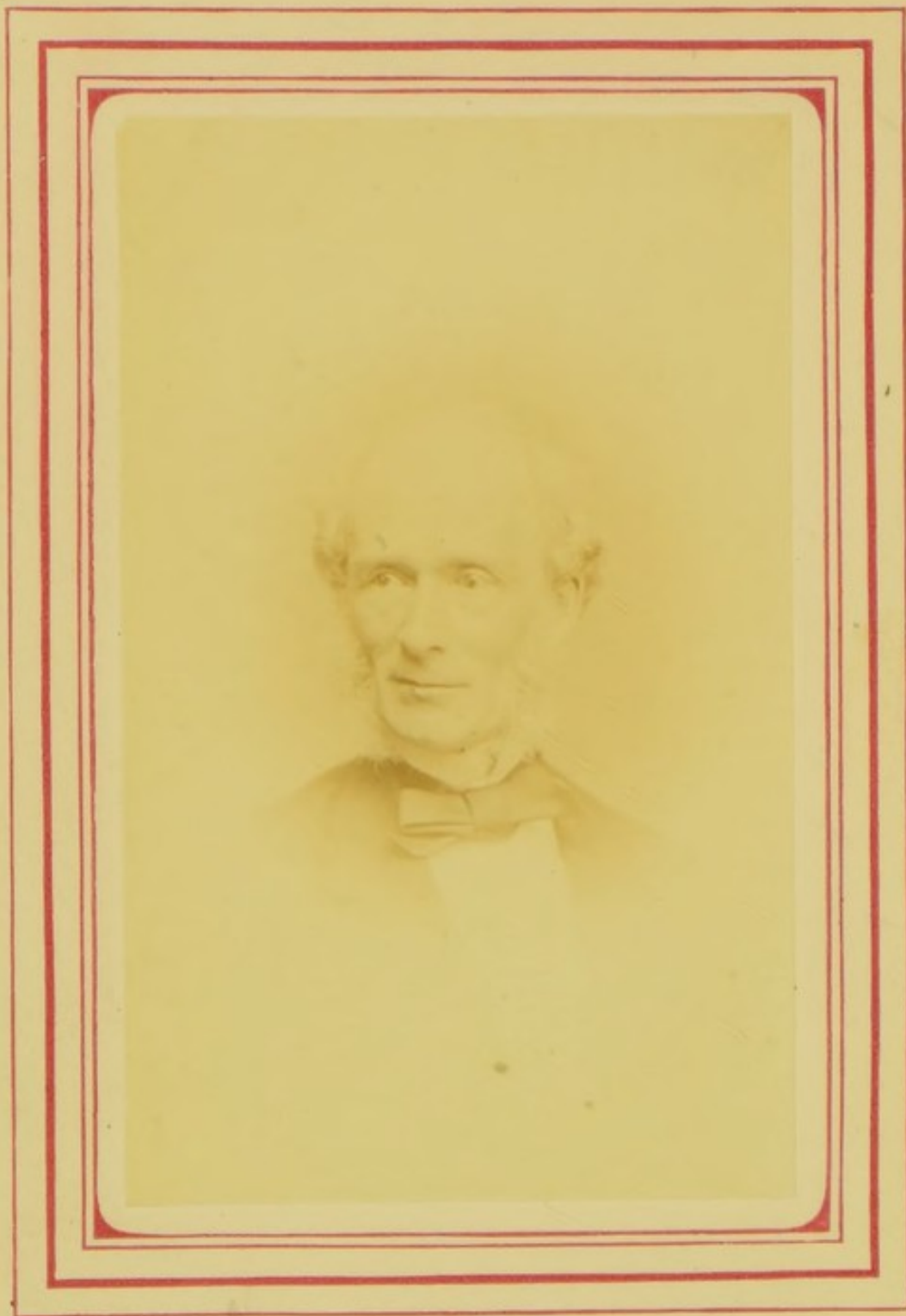












JOSEPH PRESTWICH, F.R.S.

President of the Geological Society, &c. &c. &c.









EMINENT MEN OF THE DAY



PHOTOGRAPHED

BY

G. C. WARRICK, M.D.

SCIENTIFIC SERIES