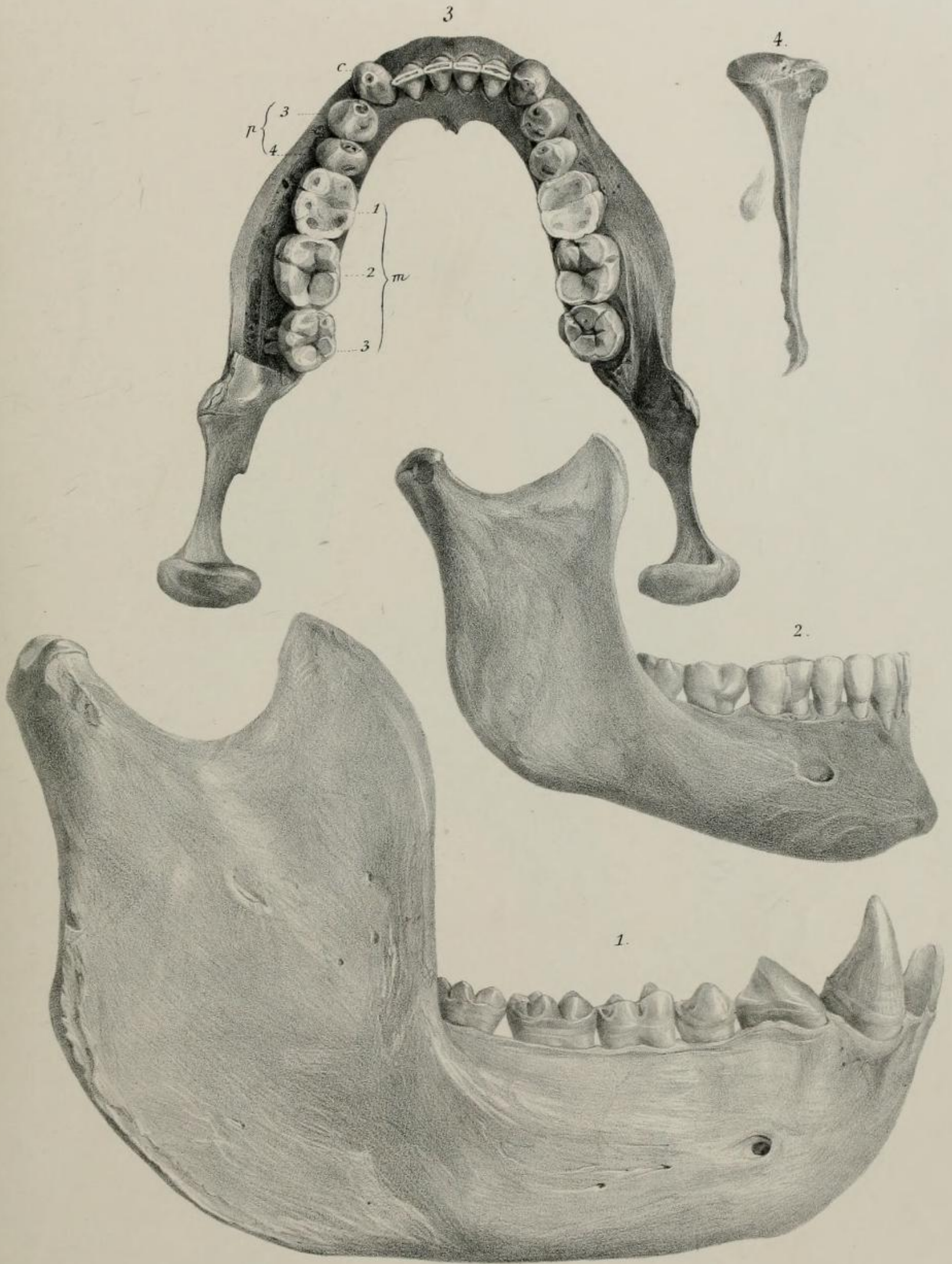


Maxilla Inferior.

Trans. Loo. Soc. Vol. 4. Pl. 31. p. 89.

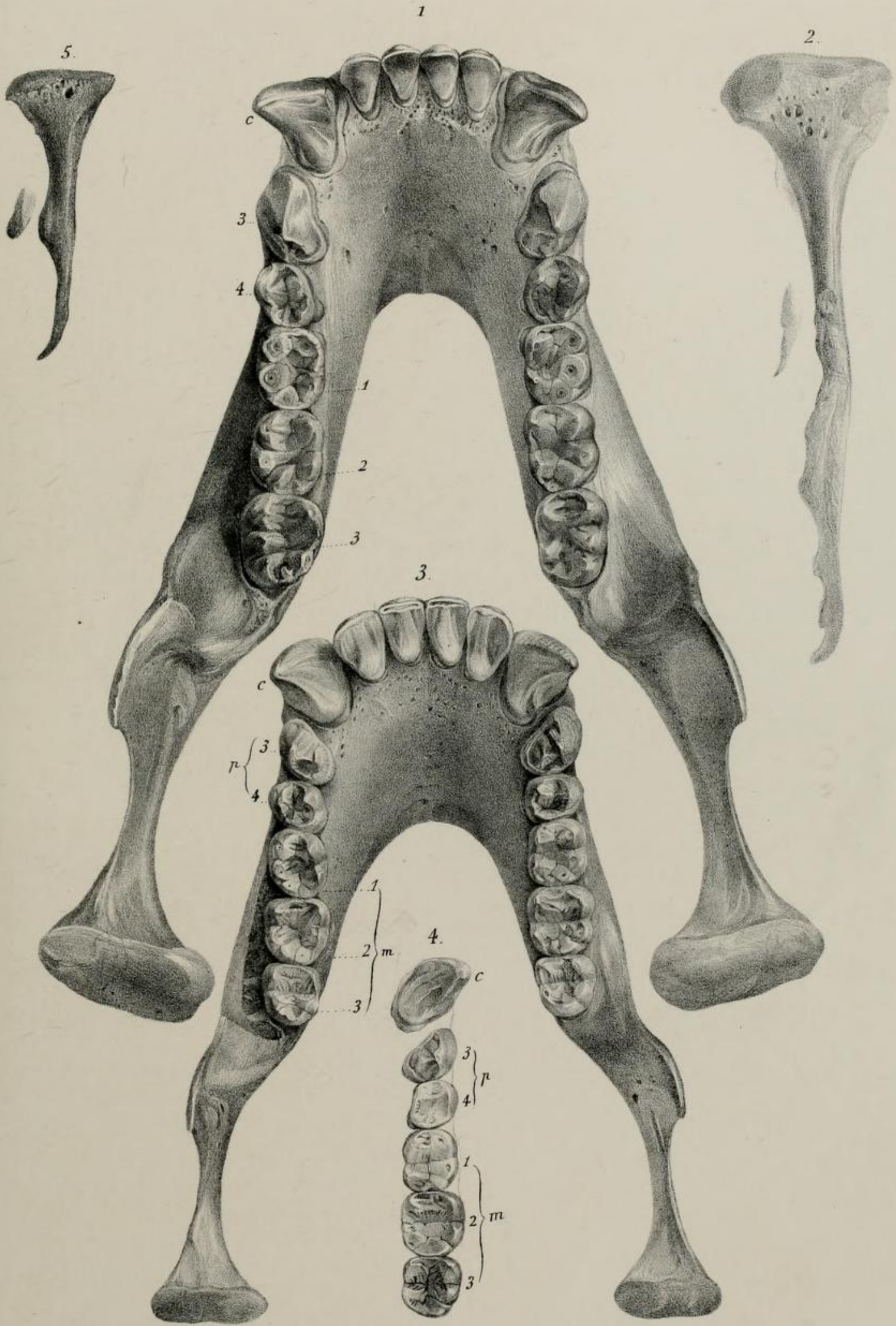


From Nature on Stone by J. Erxleben

Day & Son, Lith^{rs} to The Queen.

Troglodytes Gorilla, 2. 3. 4 Homo.

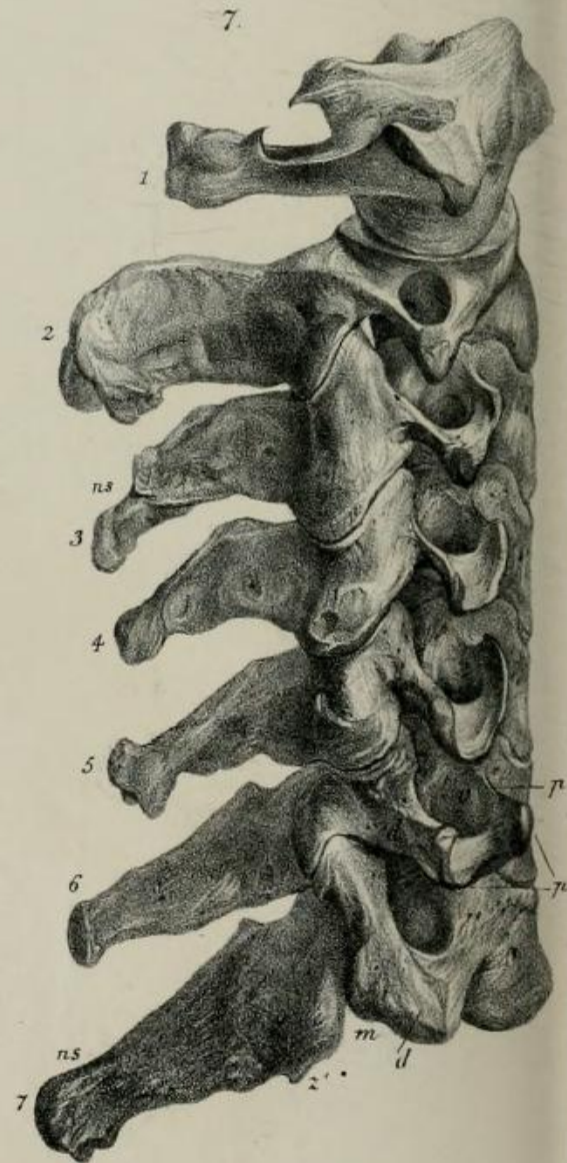
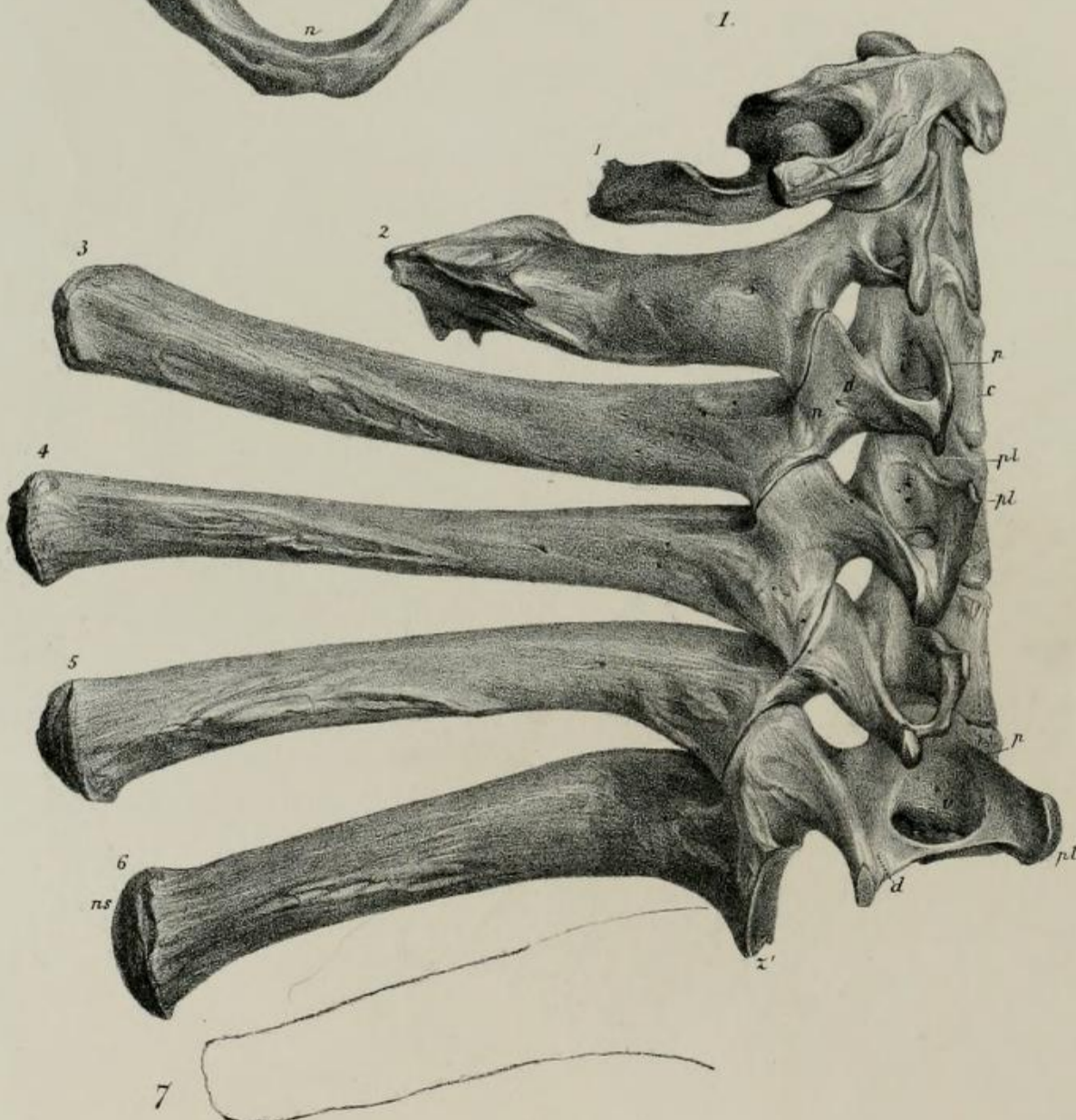
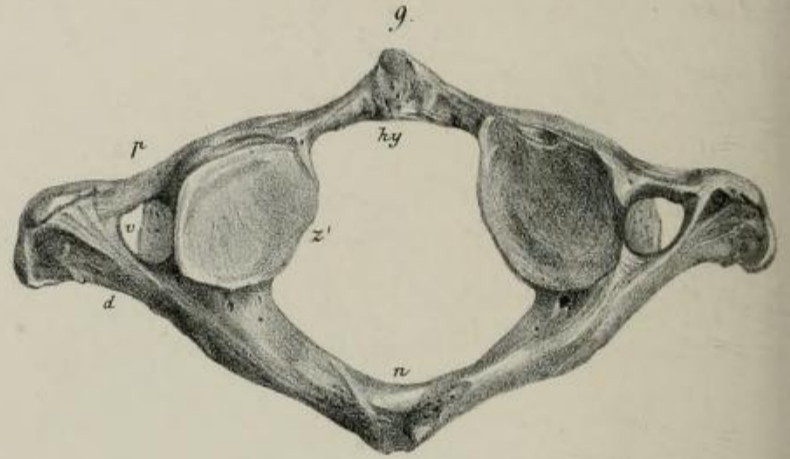
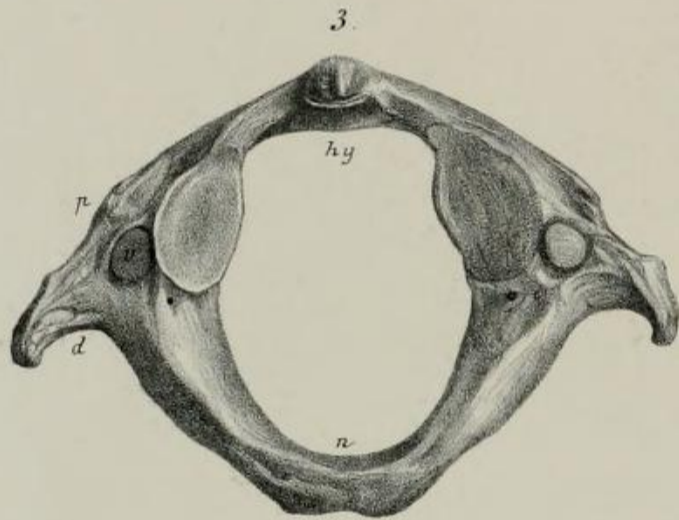
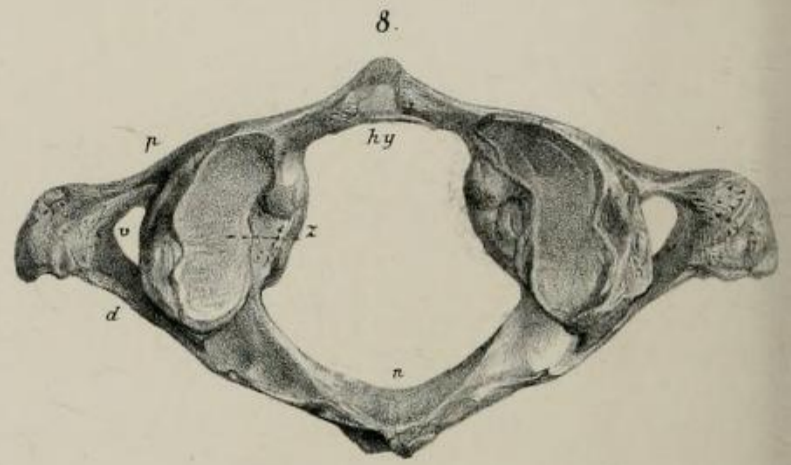
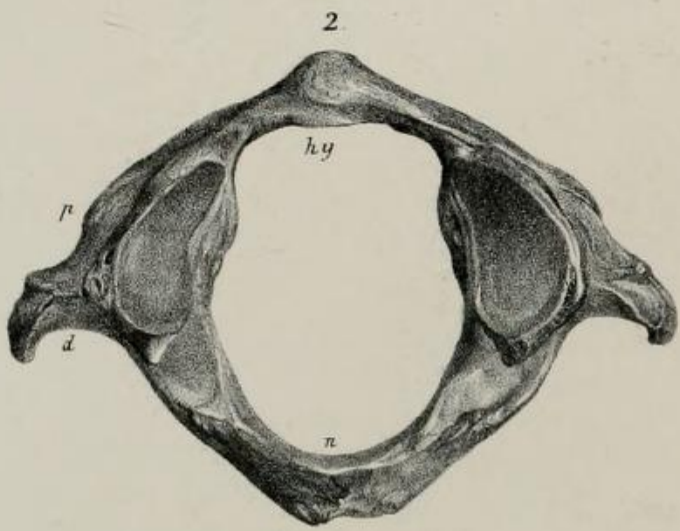
Maxilla Inferior.



From Nature on Stone by T. Erxleben

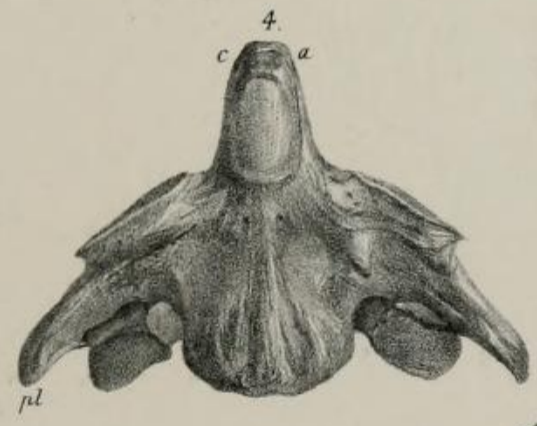
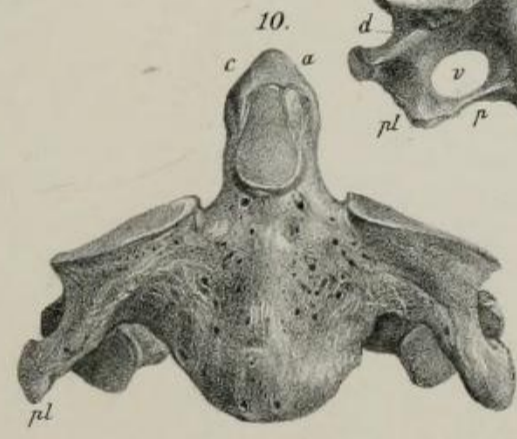
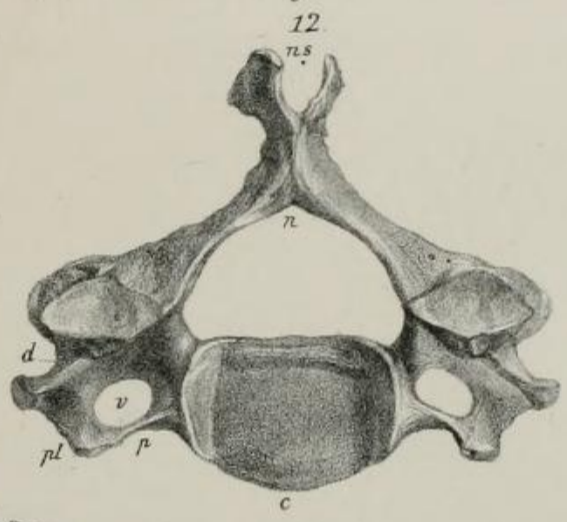
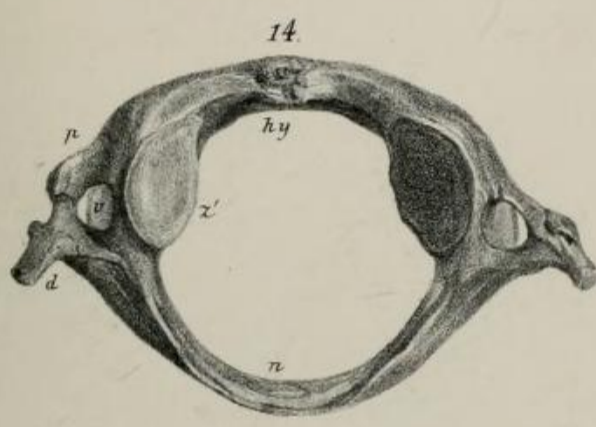
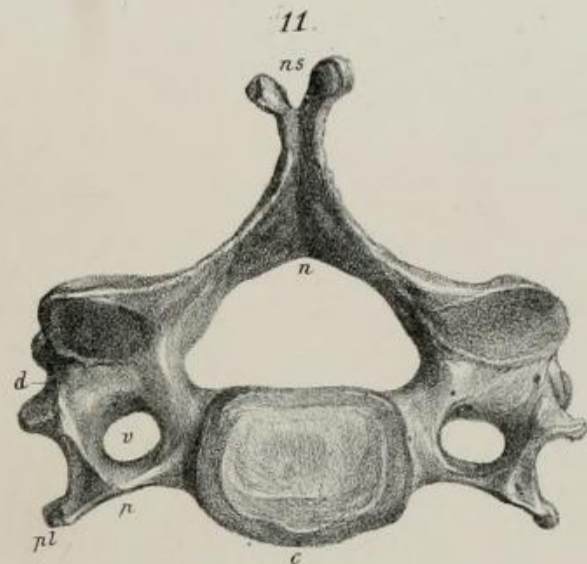
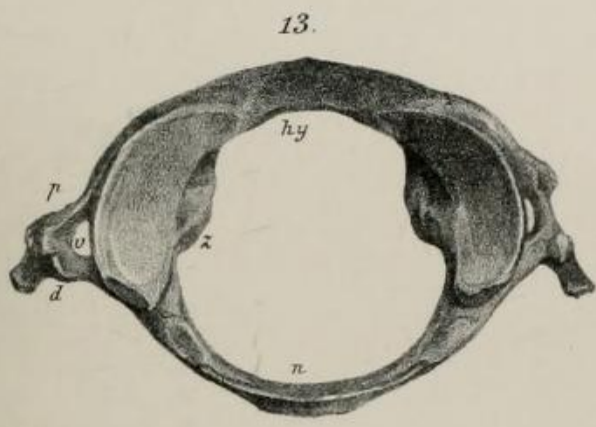
Day & Son, Lith^{rs} to The Queen

1. 2. *Troglodytes Gorilla*, 3. 5. *Troglodytes niger*.

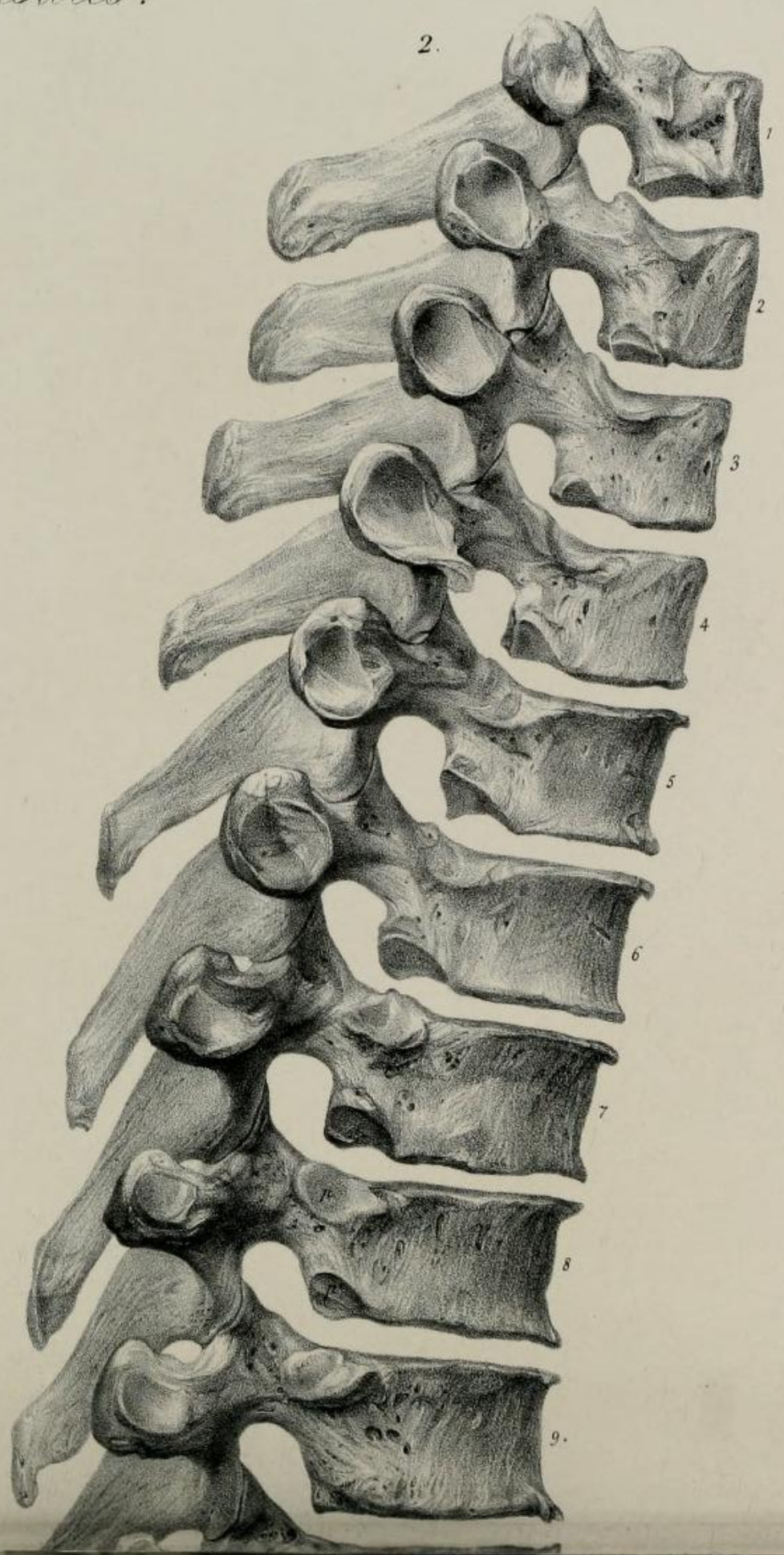
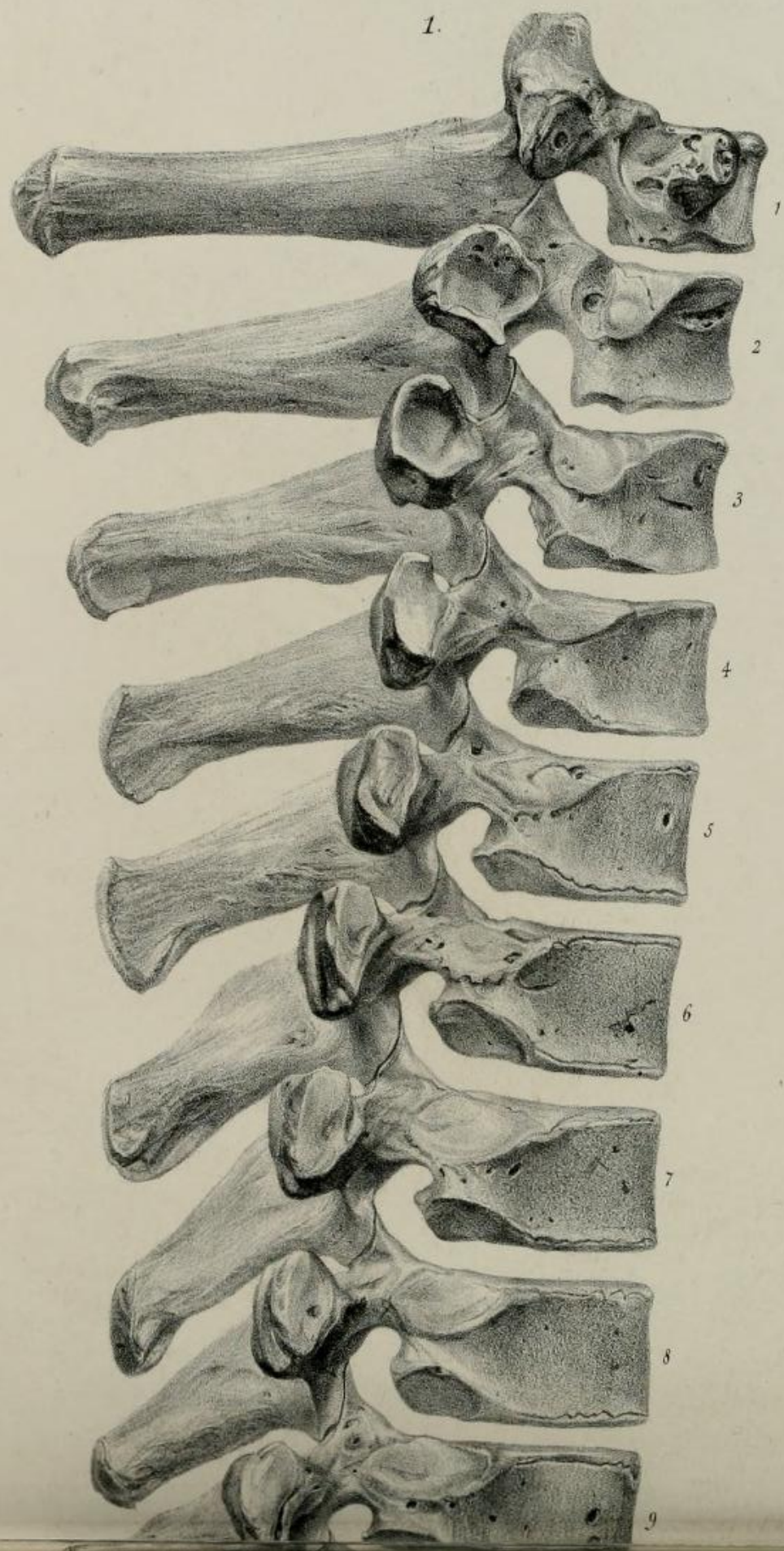


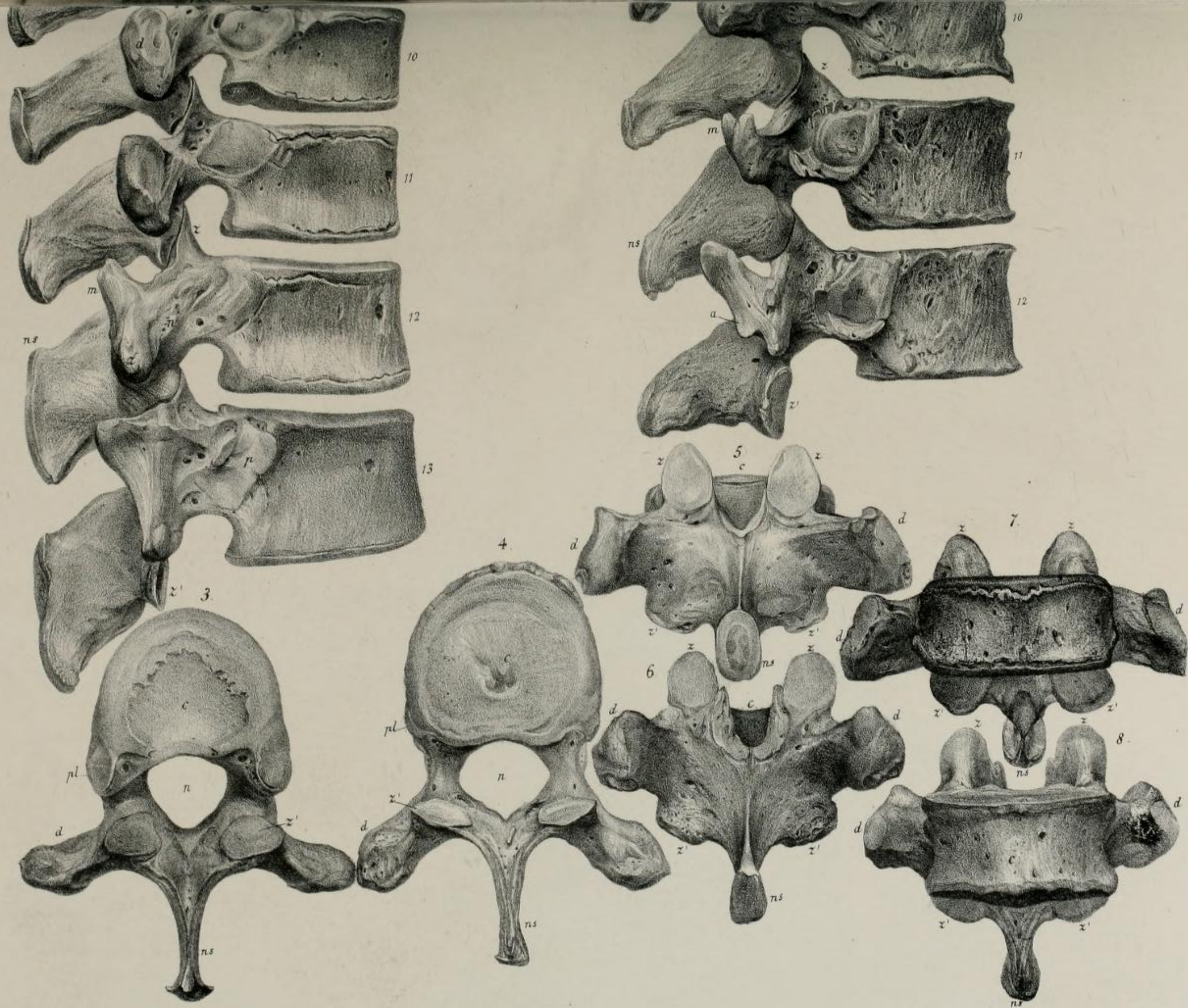
From Nature on Stone by J. Erxleben.

1. 6.. Troglodytes Gorilla. — 7. 12 Homo, var.



Vertebra dorsales.



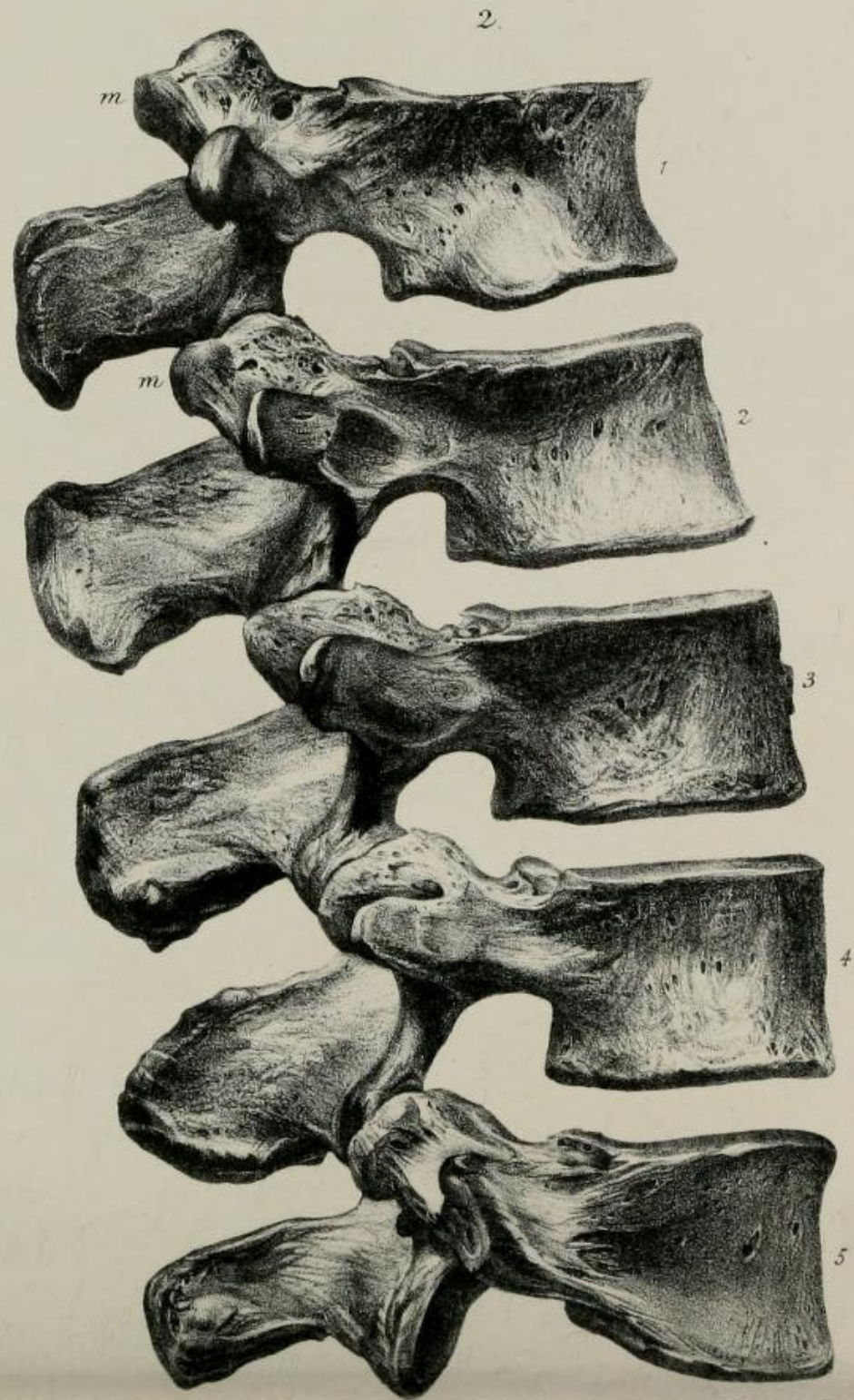
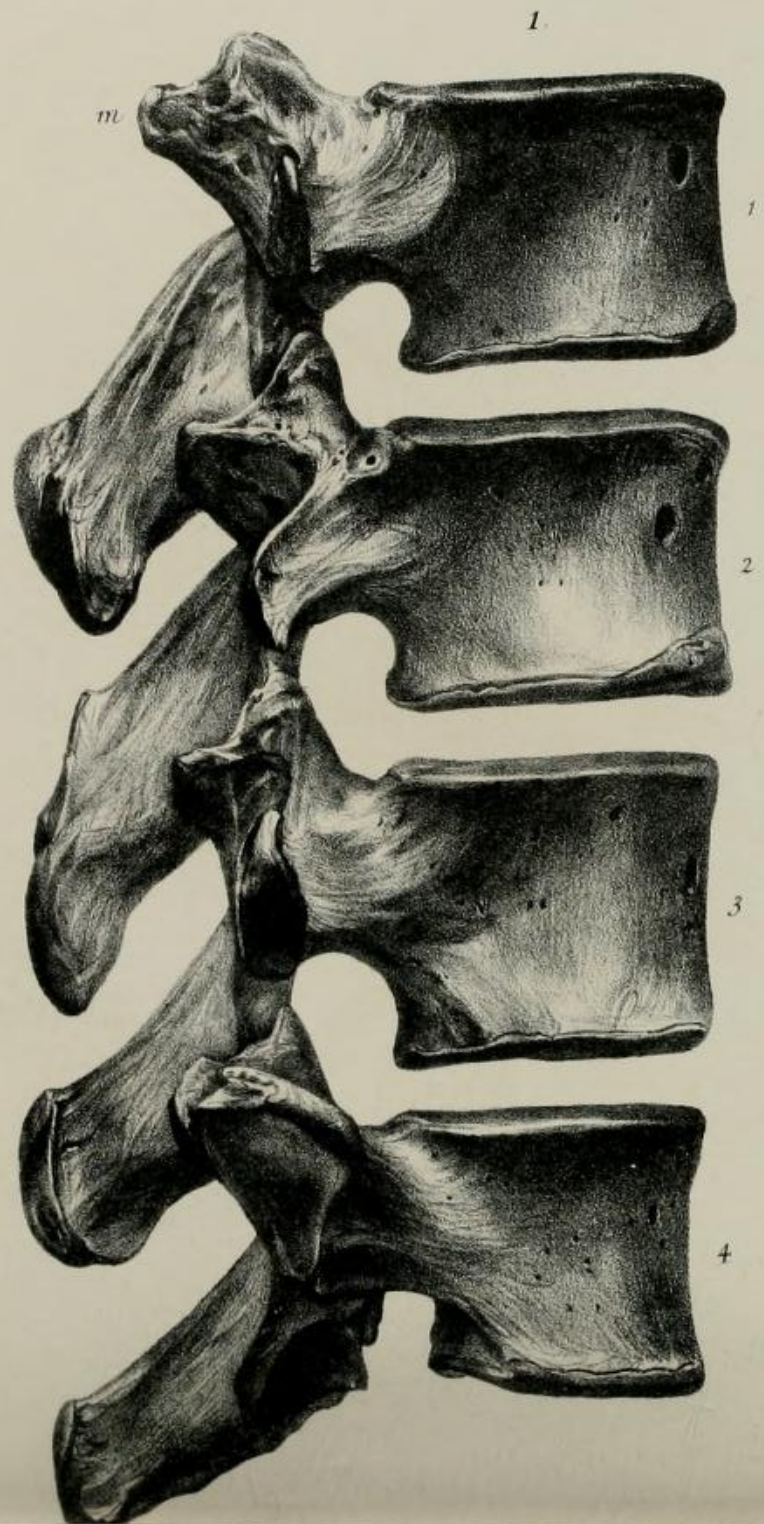


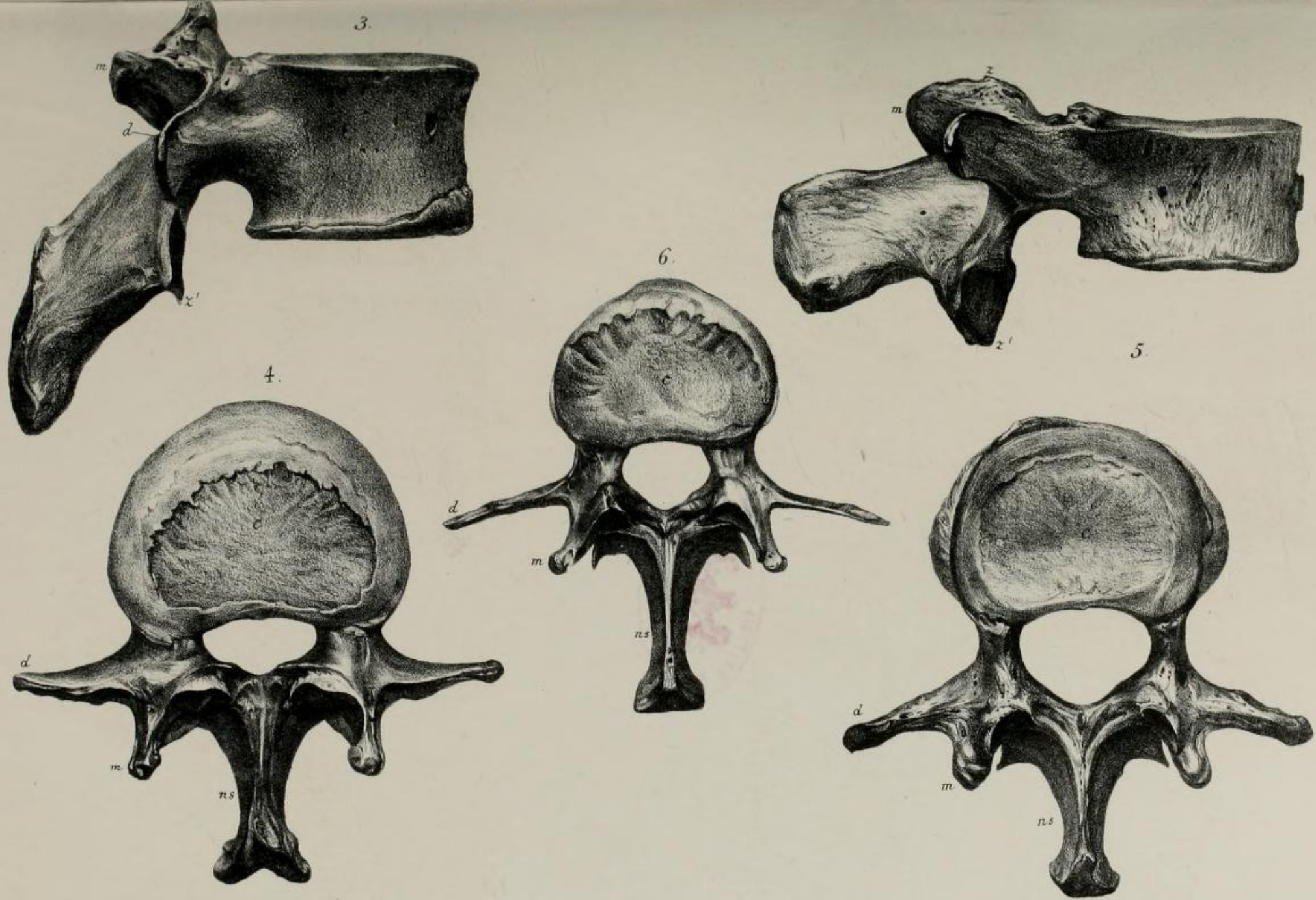
From Nature on Stone by J. Erxleben

Joy & Son, Litho to The Great

1. 3. 5. 7. Troglodytes Gorilla - 2. 4. 6. 8. Homo. var. Ethiopicus.

Vertebrae lumbales.



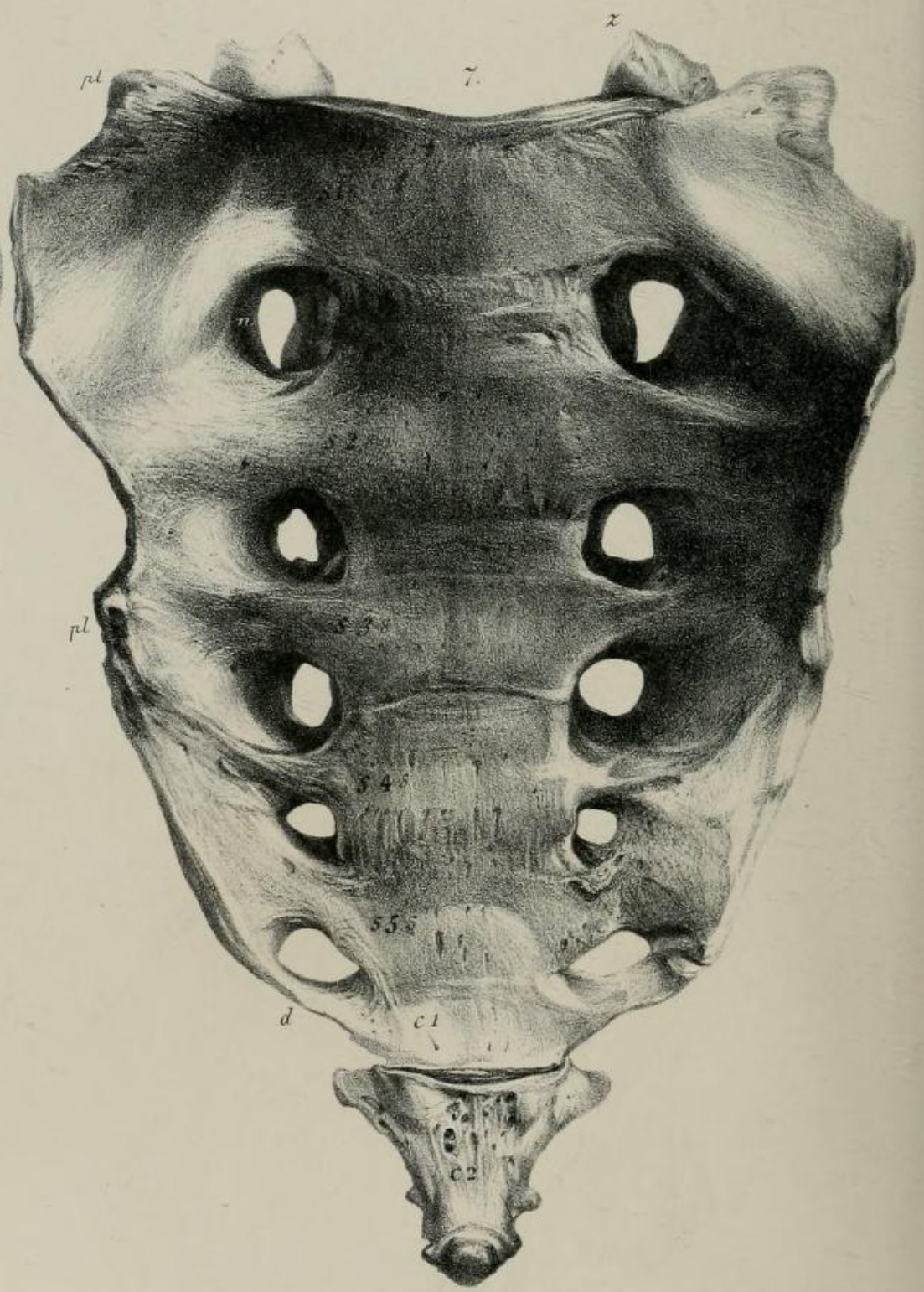
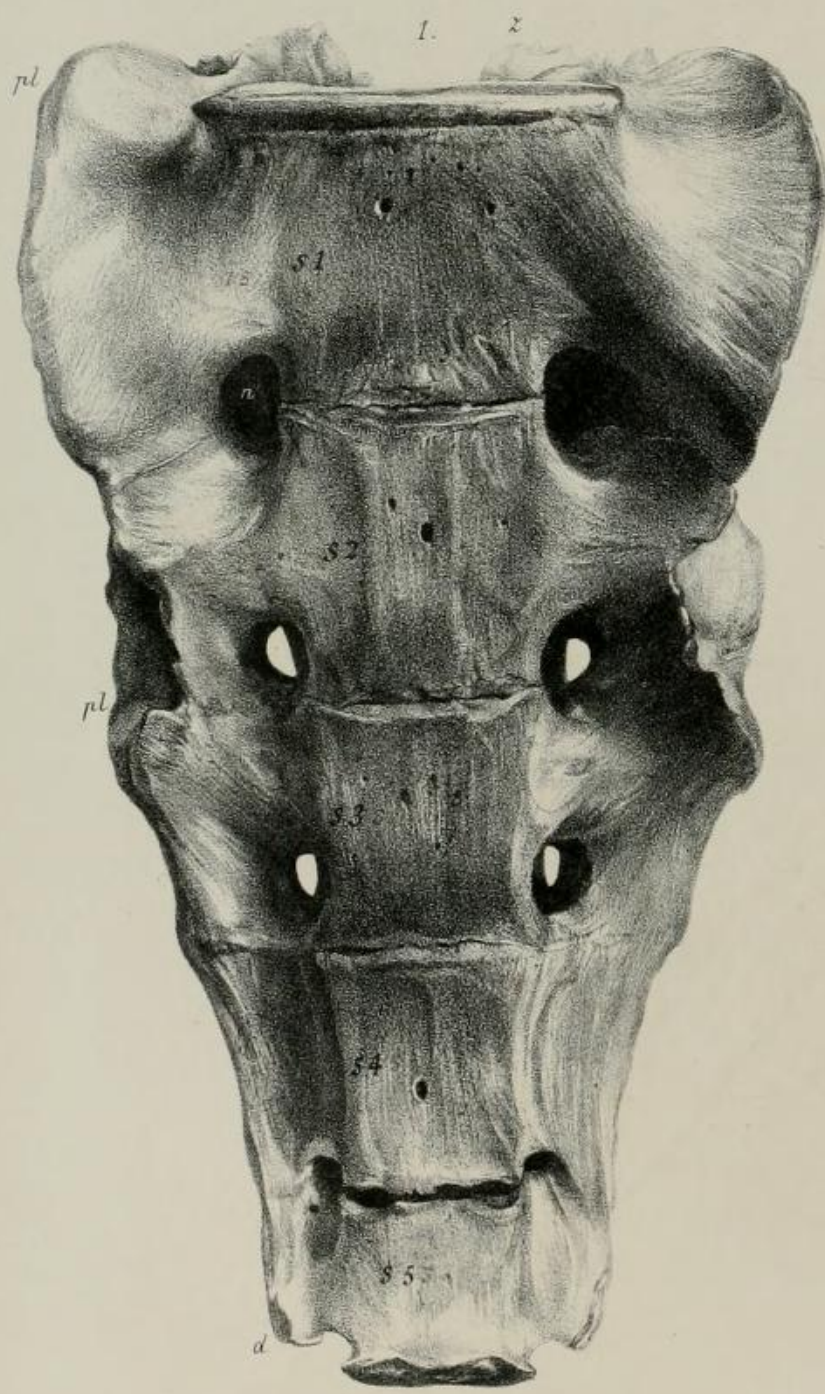
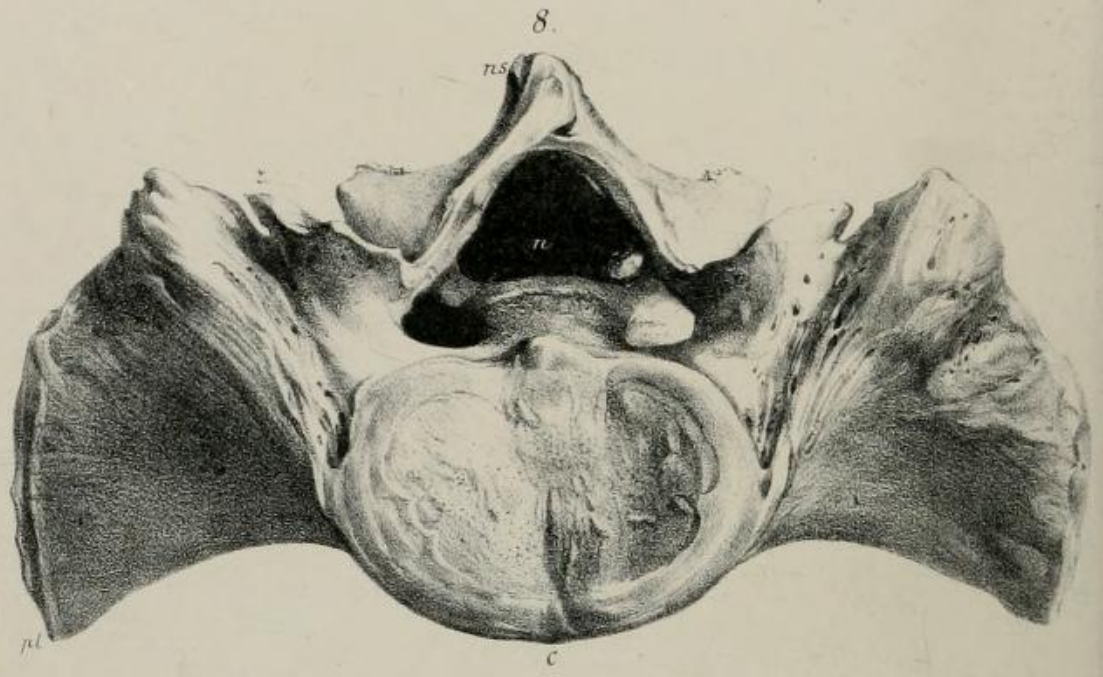
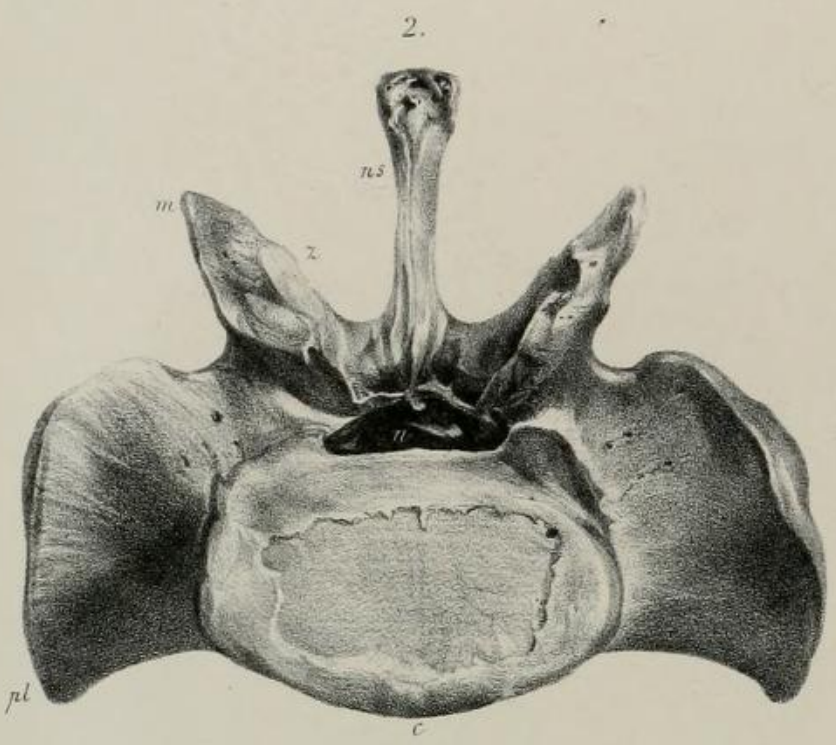


From Nature on Stone by J. Erxleben

Day & Son Litho to the Queen

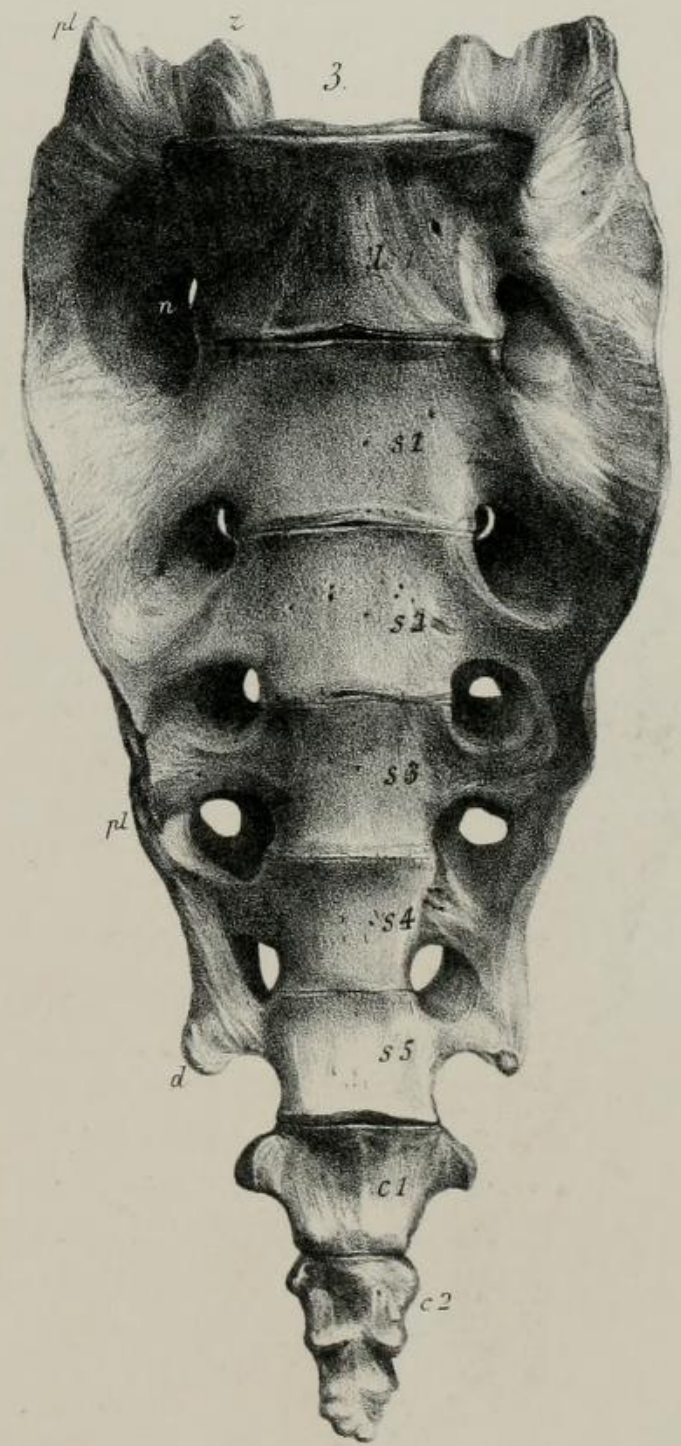
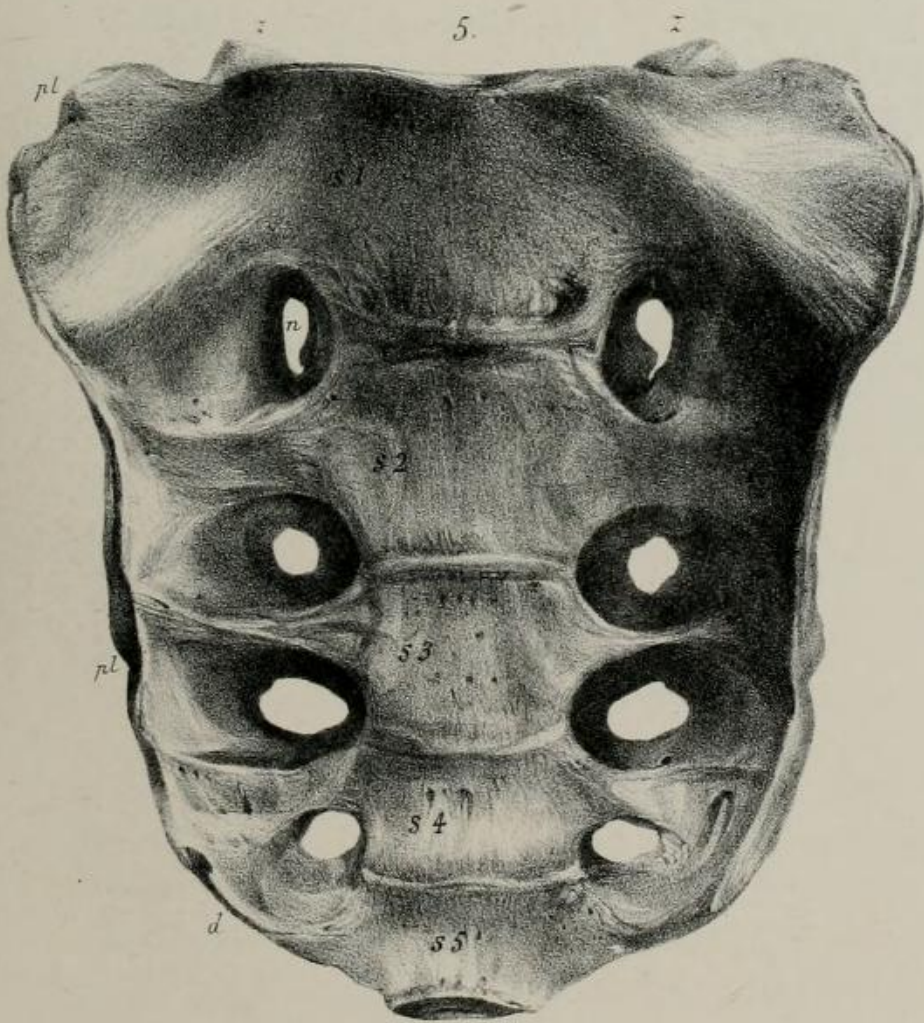
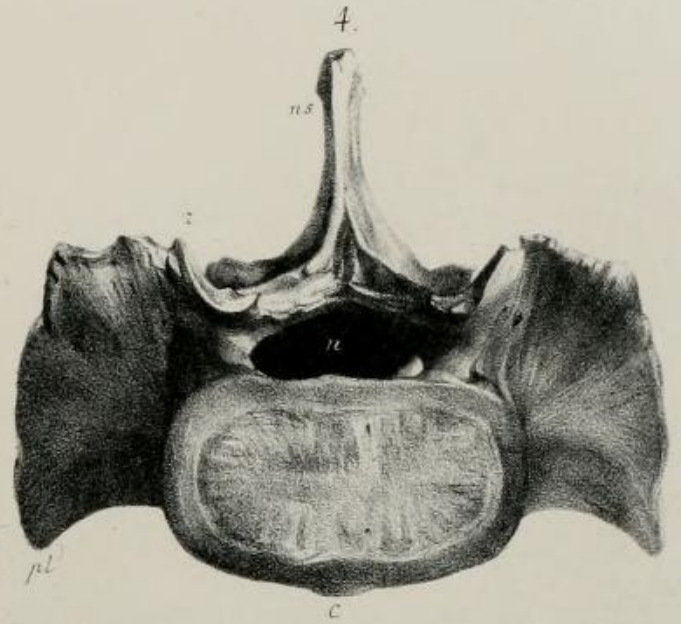
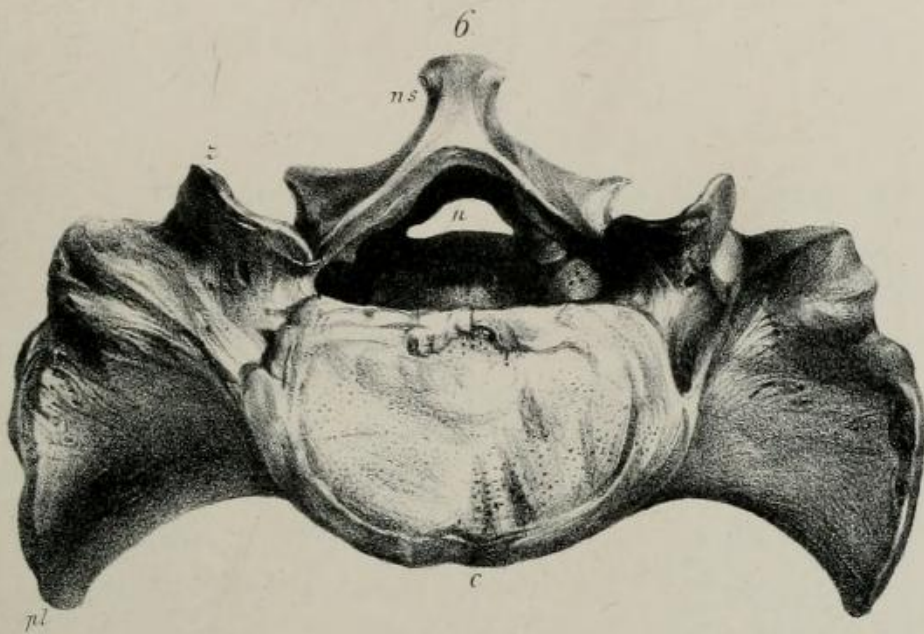
1. 3. 4. — *Troglodytes Gorilla* — 2. 5. *Homo*, var. *Aethiopicus*

6. *Troglodytes niger*.



From Nature on Stone by J. Erxleben.

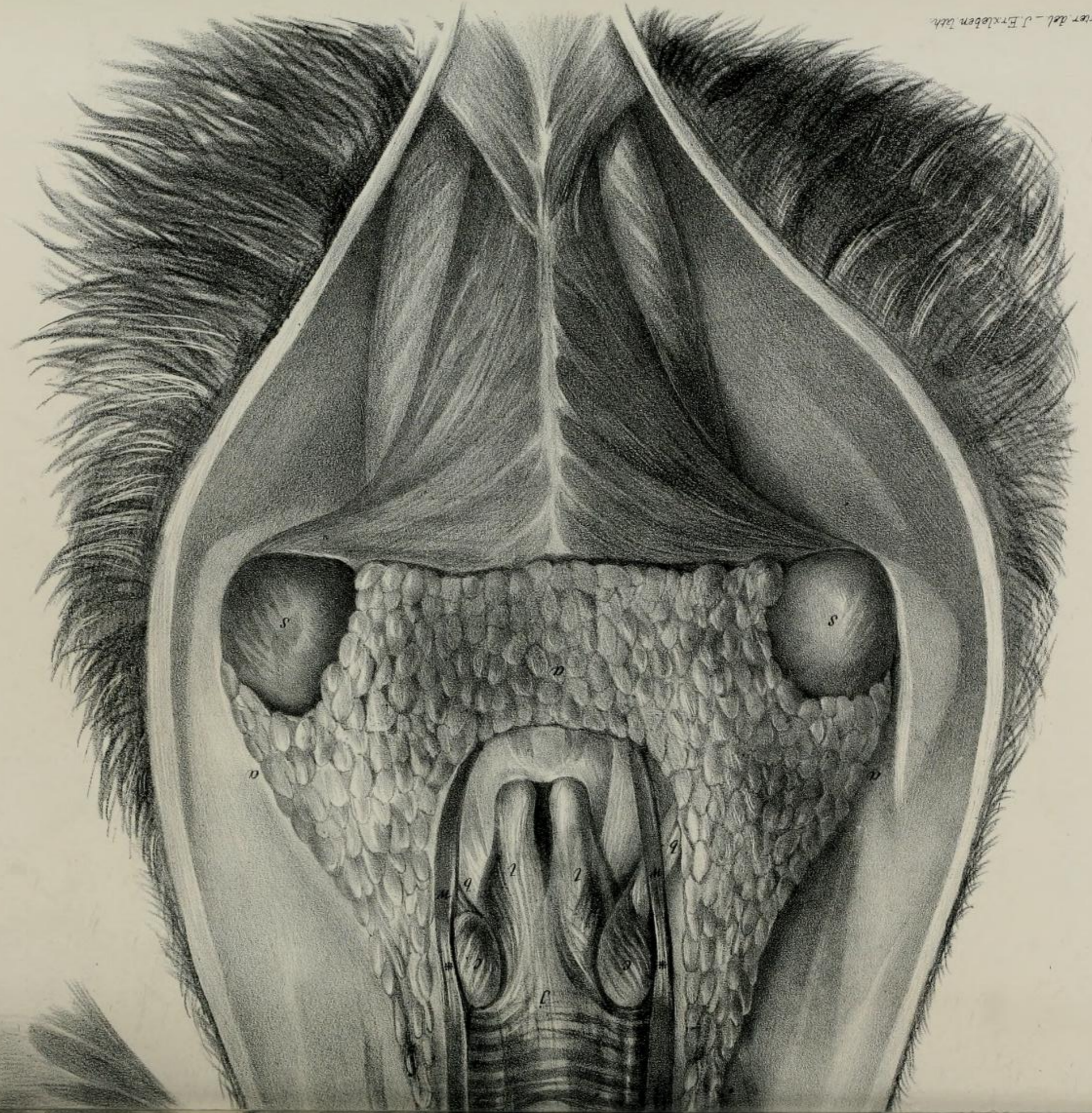
1.2. Troglodytes Gorilla. 3.4. Troglodytes



Day & Son Lith^{rs} to the Queen

Cyrtus niger. 5. 6. Australian. 7. 8. European.

E. V. Carter del. - J. Erxleben sculp.



Day & Son, Lith'rs to the Queen



Fig. 3.

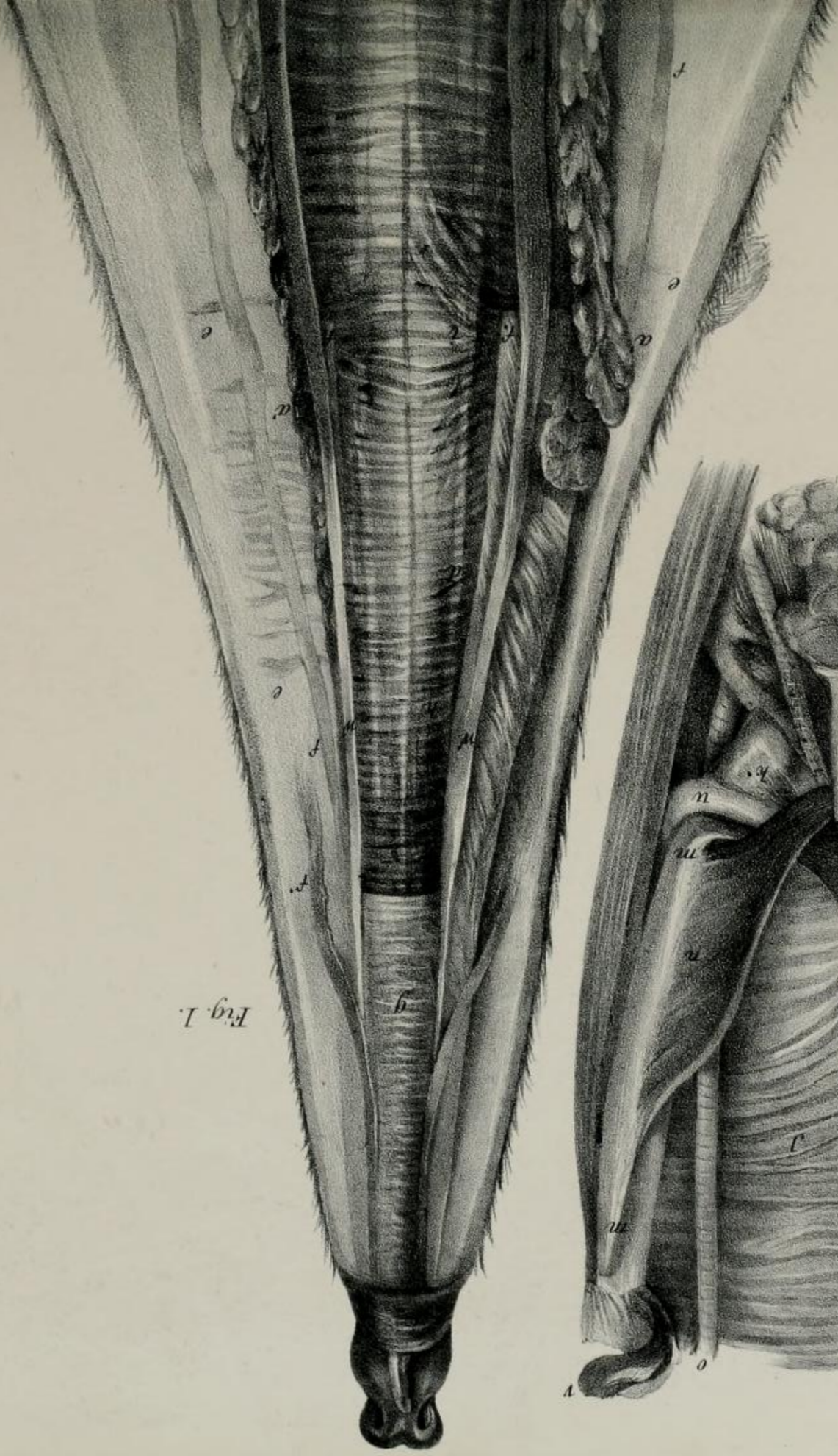


Fig. 1.

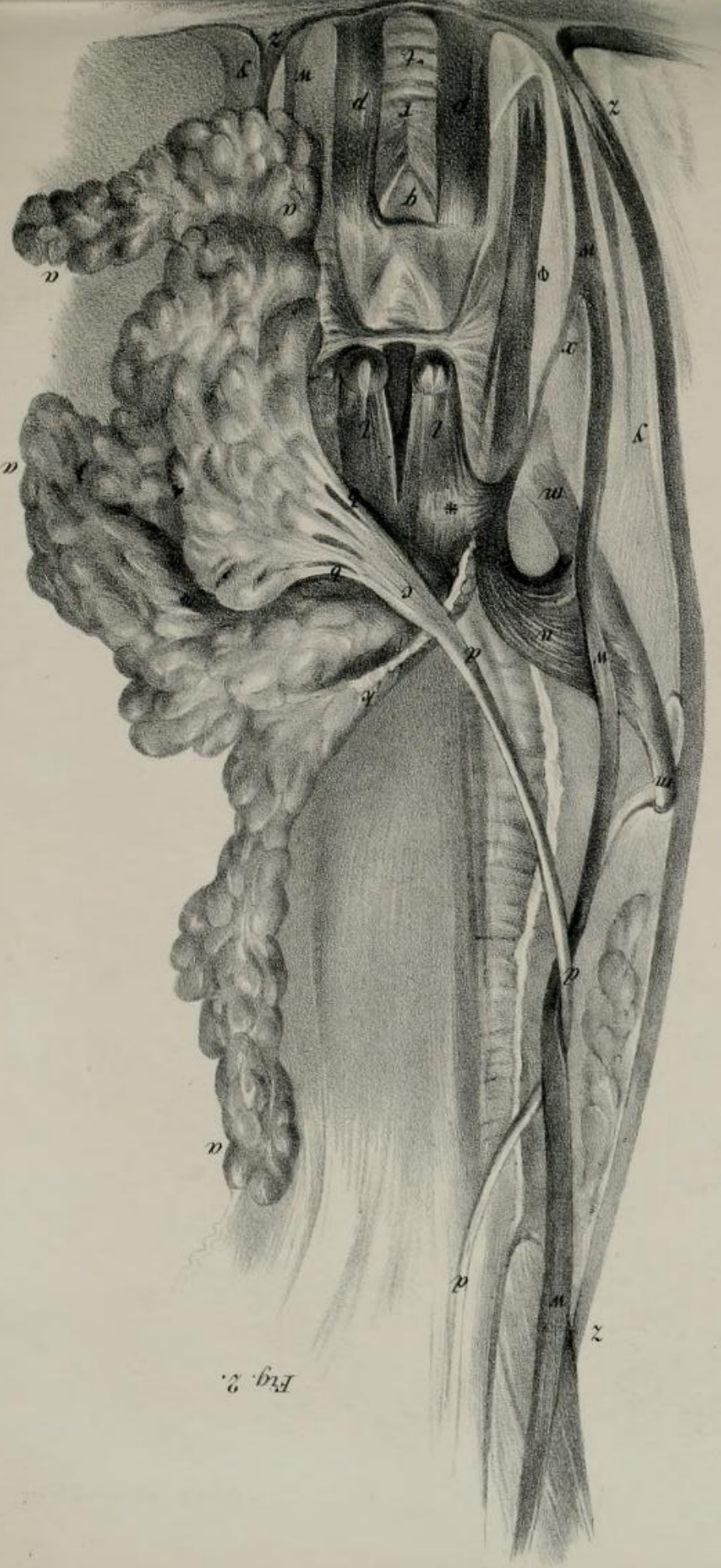


Fig. 2.

E. V. Carver, del. — J. Erskine, lith.

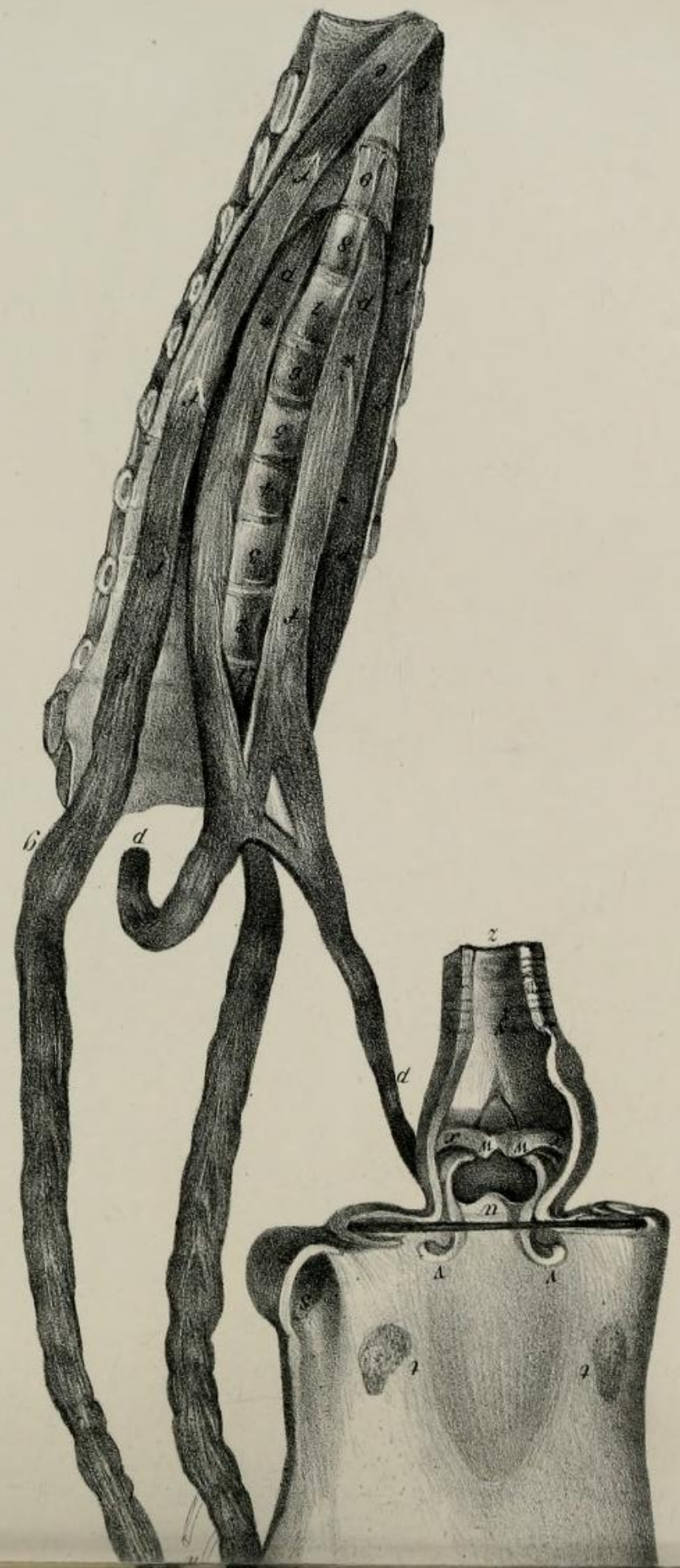
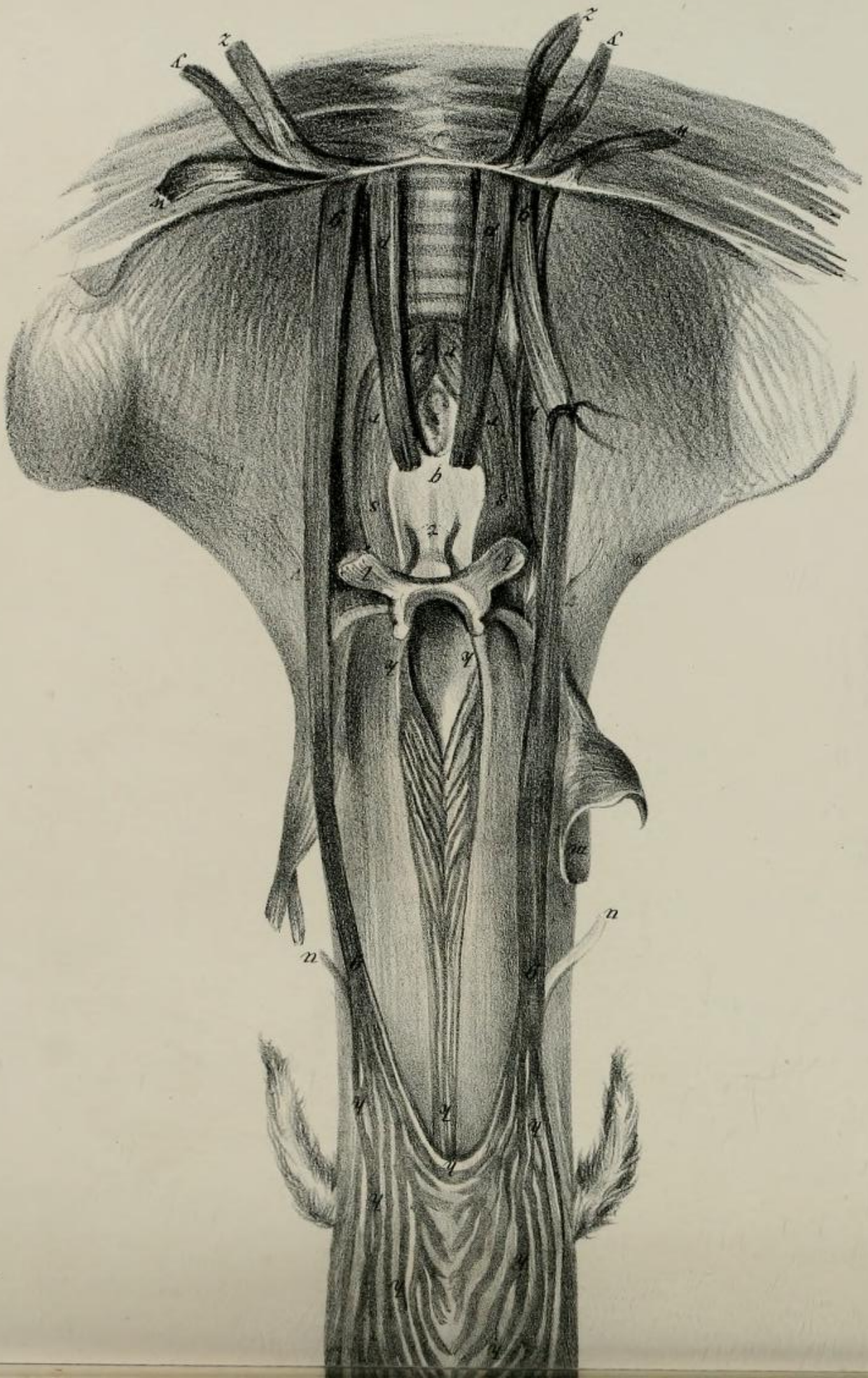




Fig. 2.



Fig. 1.

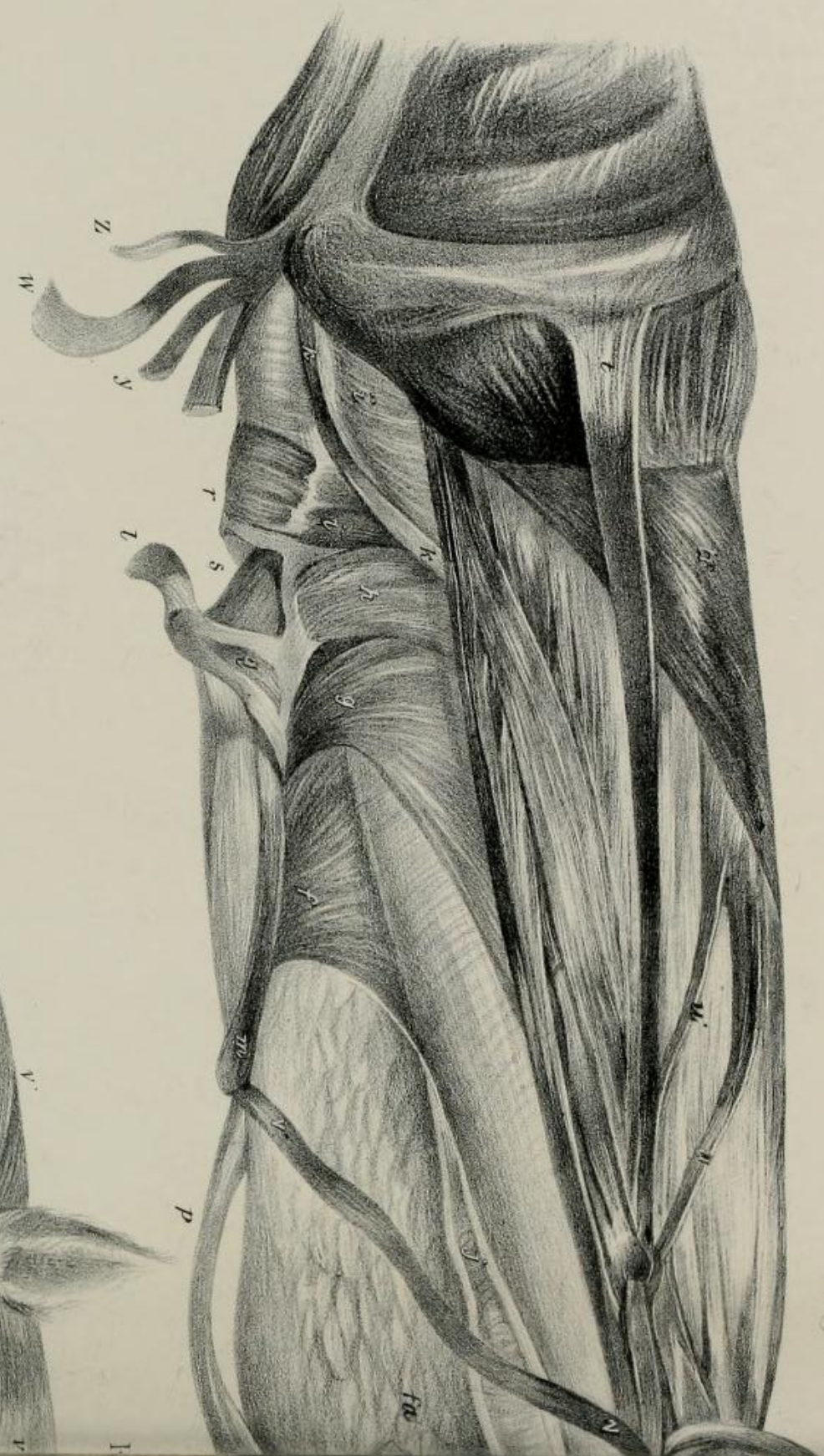
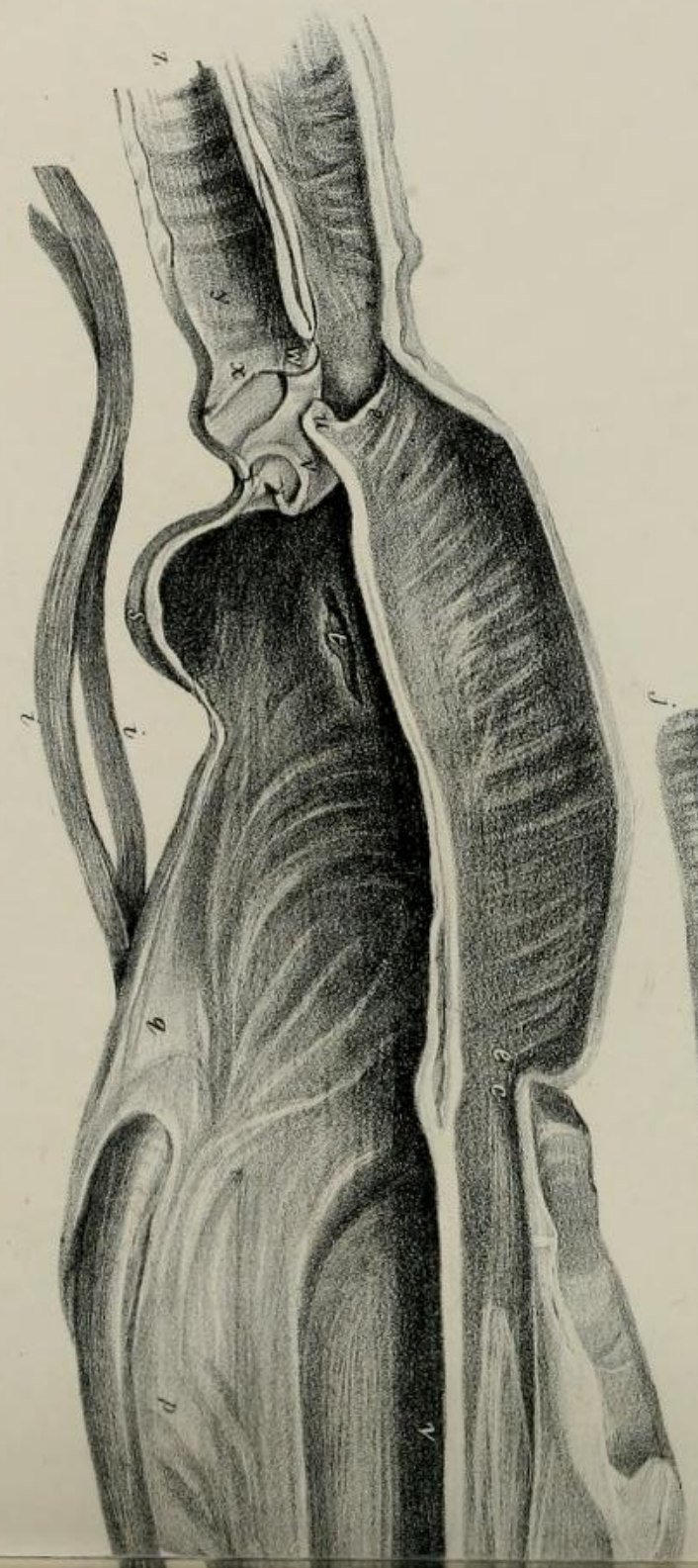
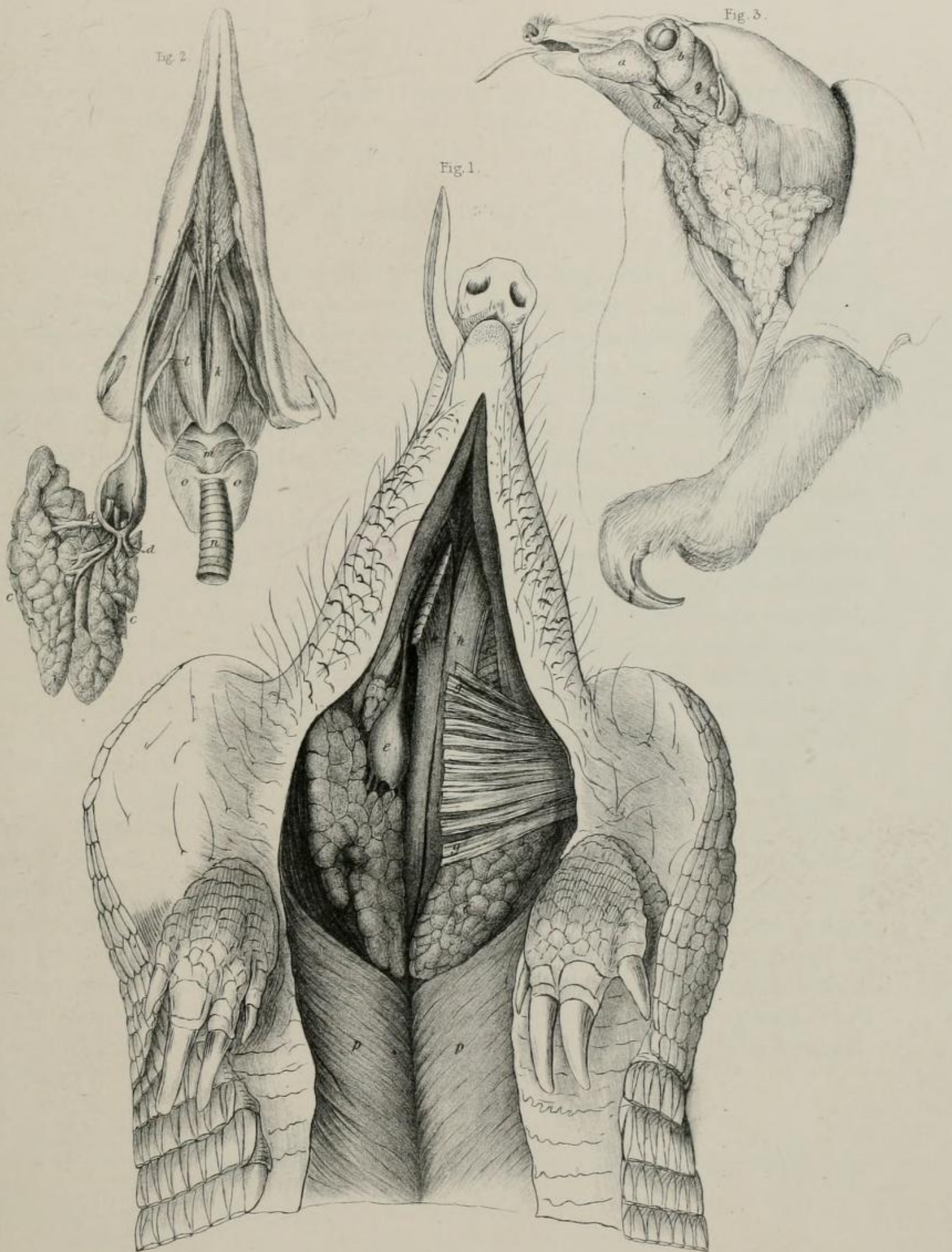


FIG. 2.



Fig. 3.



R. B. de Kay.

Lucas Alderson, Sculp.

SALIVARY GLANDS.
1 & 2 Armadillo. — 3. Ant-eater