

LA CONNAISSANCE  
GÉNÉRALE  
**DU BŒUF**

---

**PLANCHES**

Dessinées par M. Rouyer et gravées par M. Huyot.

PUBLIÉE PAR

**FIRMIN DIDOT FRÈRES, FILS ET C<sup>ie</sup>**

SOUS LA DIRECTION DE MM.

**L. MOLL**

Chevalier de la Légion d'honneur,  
Fermier à Vaujours, Professeur d'Agriculture au Conservatoire impérial des Arts et Métiers,  
Membre du Conseil général d'Agriculture,  
De la Société impériale et centrale d'Agriculture, etc., etc.,

ET

**EUG. GAYOT**

Ancien directeur de l'Administration des Haras, Membre de plusieurs sociétés scientifiques.



PARIS

**LIBRAIRIE DE FIRMIN DIDOT FRÈRES, FILS ET C<sup>ie</sup>**

IMPRIMEURS DE L'INSTITUT, RUE JACOB, 56

1860

Droit de traduction et de reproduction réservé.

161393

SF197  
M6  
Atlas



---

Paris. — Typographie de Firmin Didot frères, fils et C<sup>ie</sup>, rue Jacob, 56.

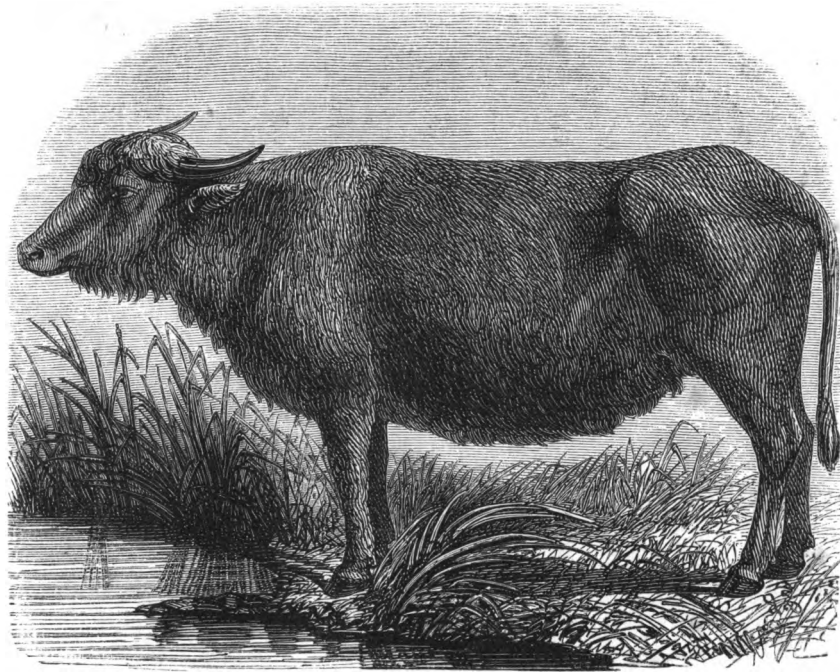


Fig 1. — Le buffle (page 4).





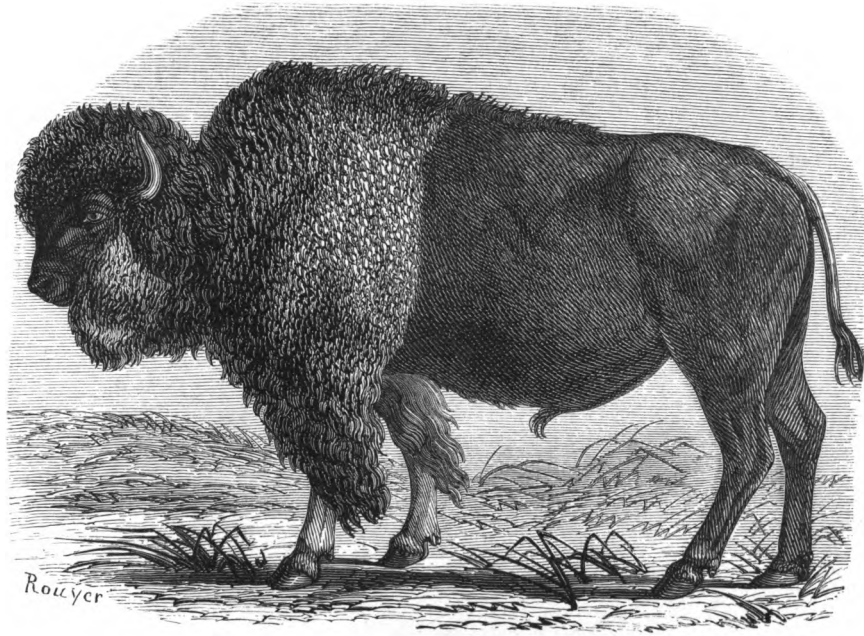


Fig. 2. — Le bison (page 7).



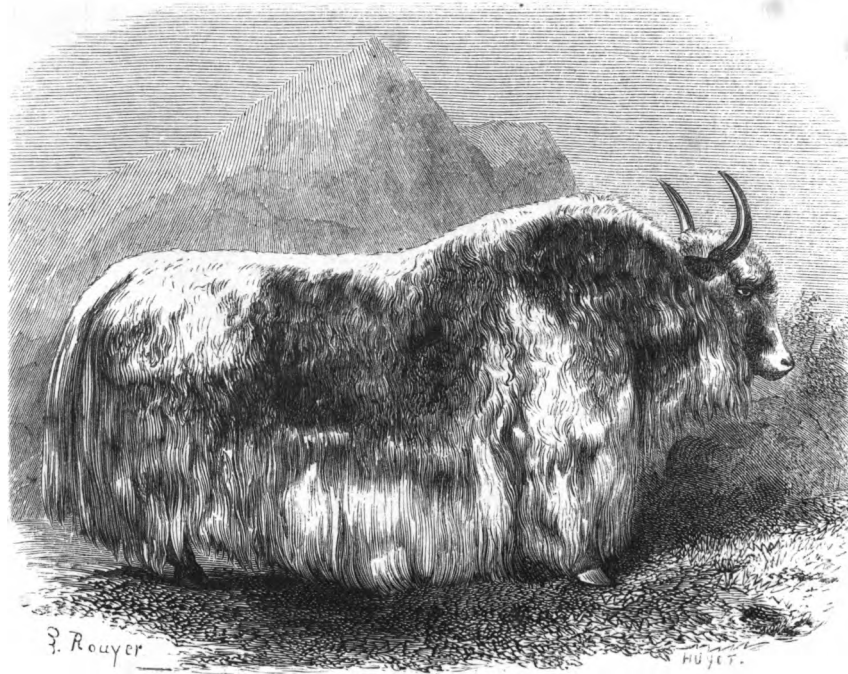


Fig. 3. — L'yack (page 11).



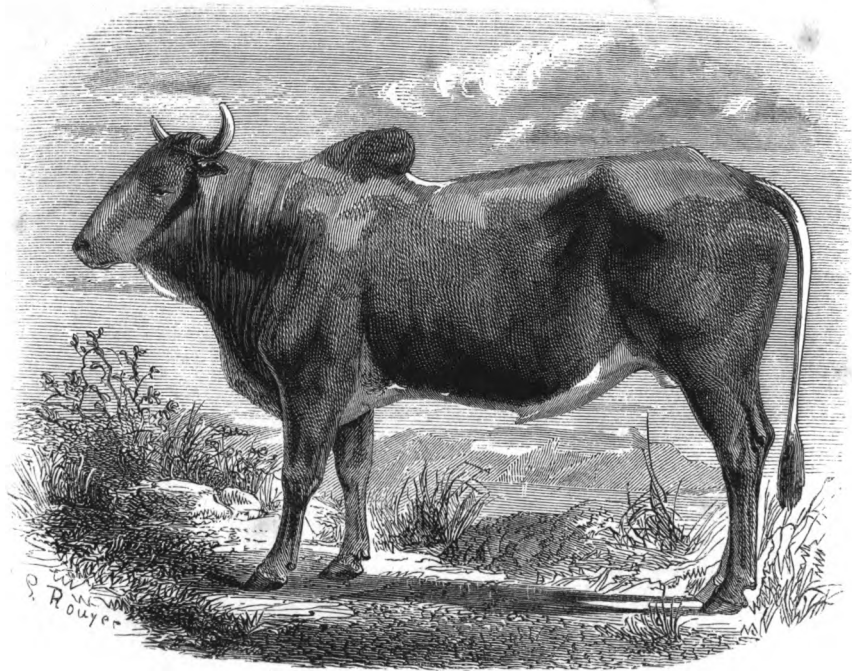


Fig. 4. — Le zébu (page 14).



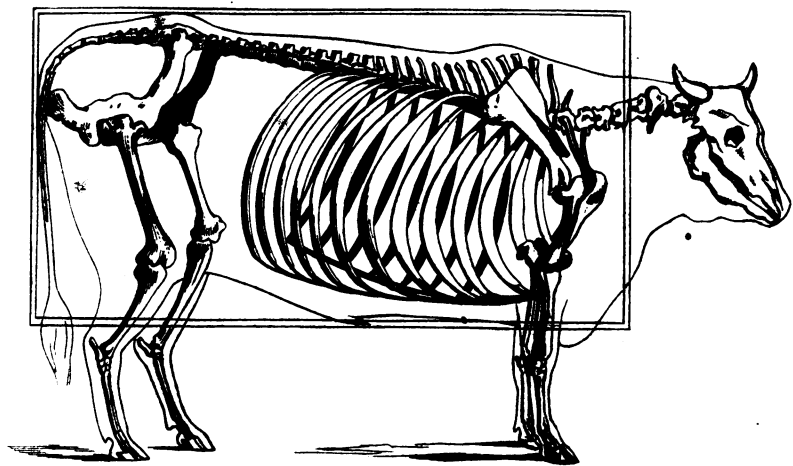


Fig. 5. — Squelette du bœuf de trait (page 22).





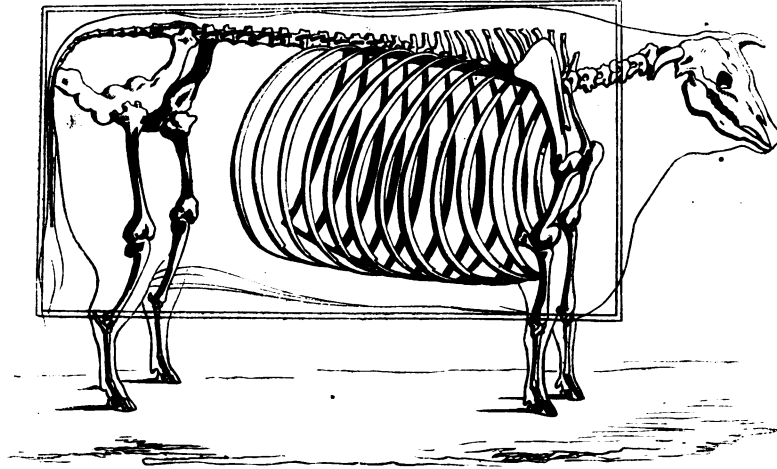
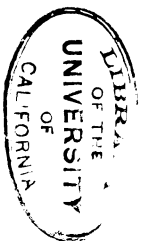


Fig. 6. — Squelette du bœuf de boucherie (page 22).



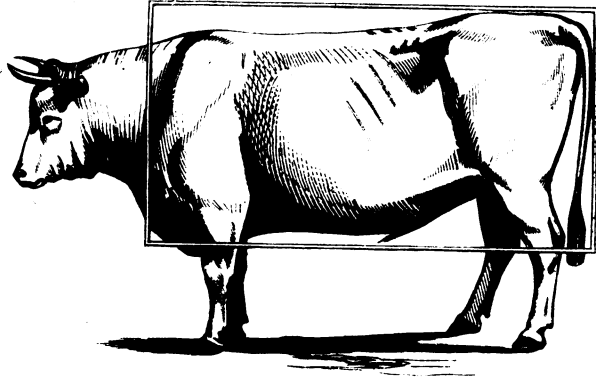


Fig. 7. — Profil du bœuf de trait (page 38).



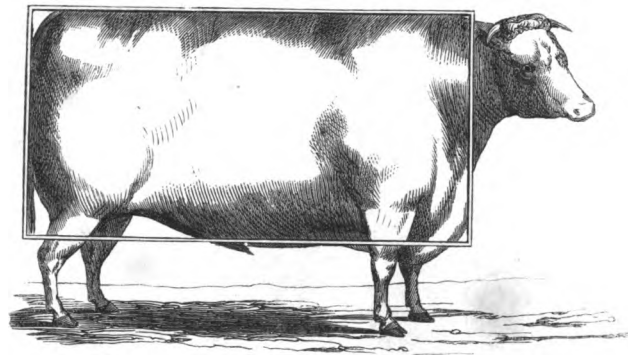
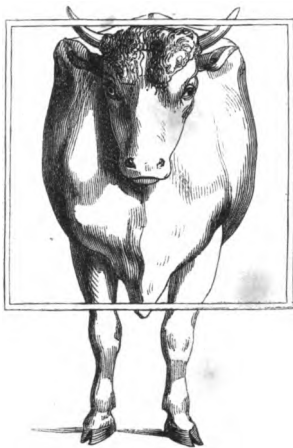


Fig. 8. — Profil du bœuf de boucherie (page 38).





**Fig. 9. — Bœuf de trait,  
vu par devant (page 38).**



**Fig. 10. — Bœuf de boucherie,  
vu par devant (page 39).**





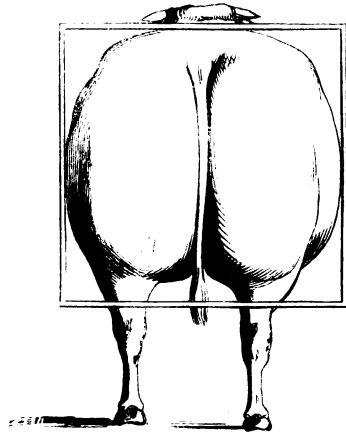


Fig. 11. — Bœuf de boucherie,  
vu par derrière (page 39).



Fig. 12. — Bœuf de trait,  
vu par derrière (page 39).

STANLEY  
J. LEE  
1900

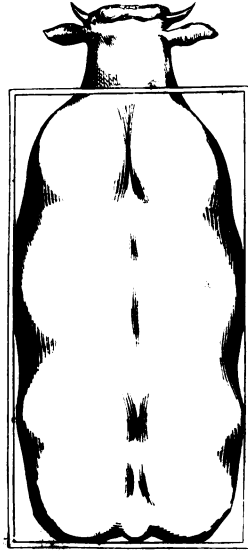
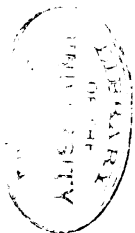


Fig. 13. — Bœuf de boucherie,  
vu par dessus (page 39).



Fig. 14. — Bœuf de trait,  
vu par dessus (page 39).



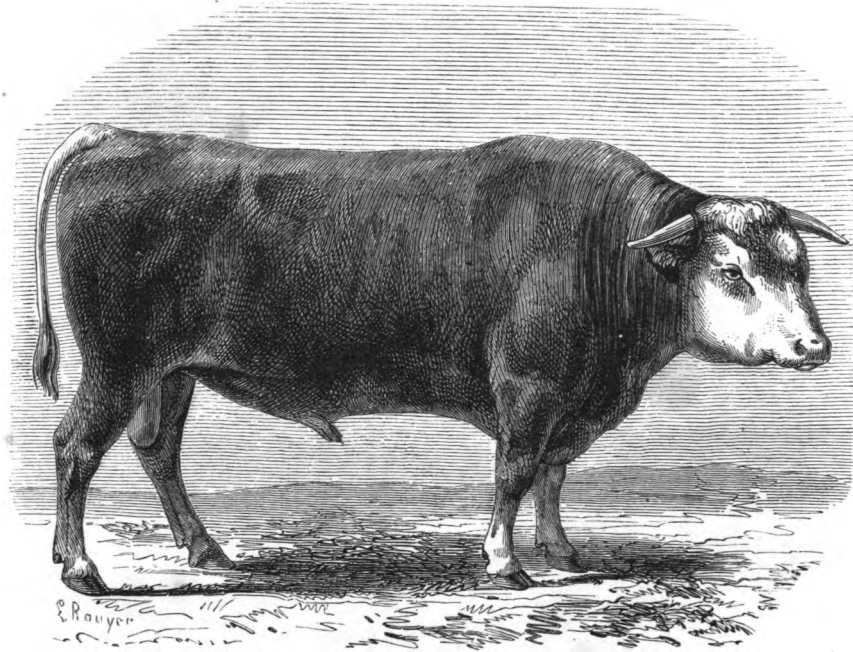
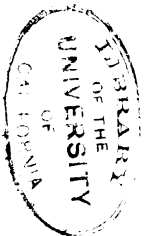


Fig 15. — Race alsacienne, variété de Boucquemon (page 65).



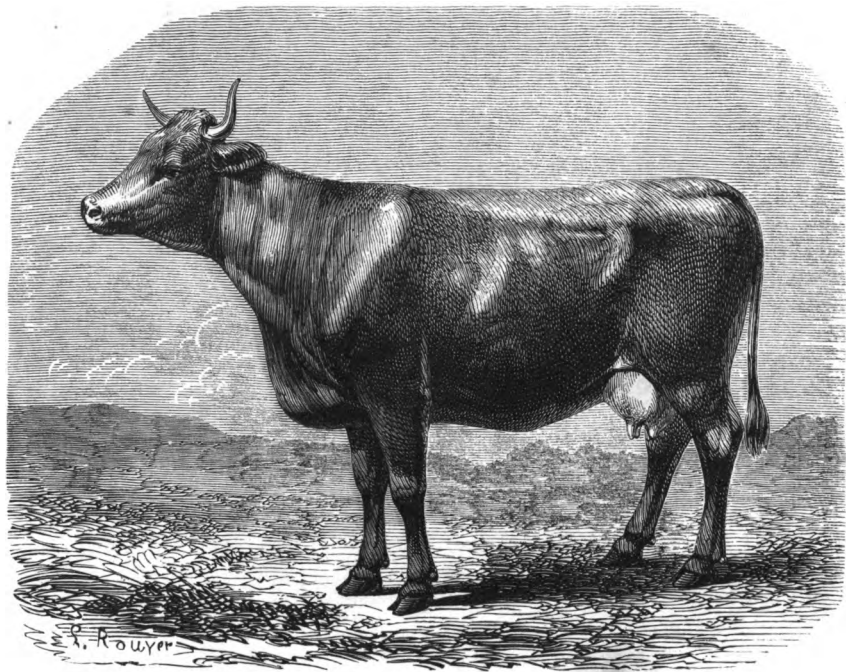
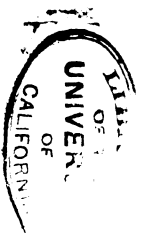


Fig. 16. — Vache de race ardennaise (page 68).





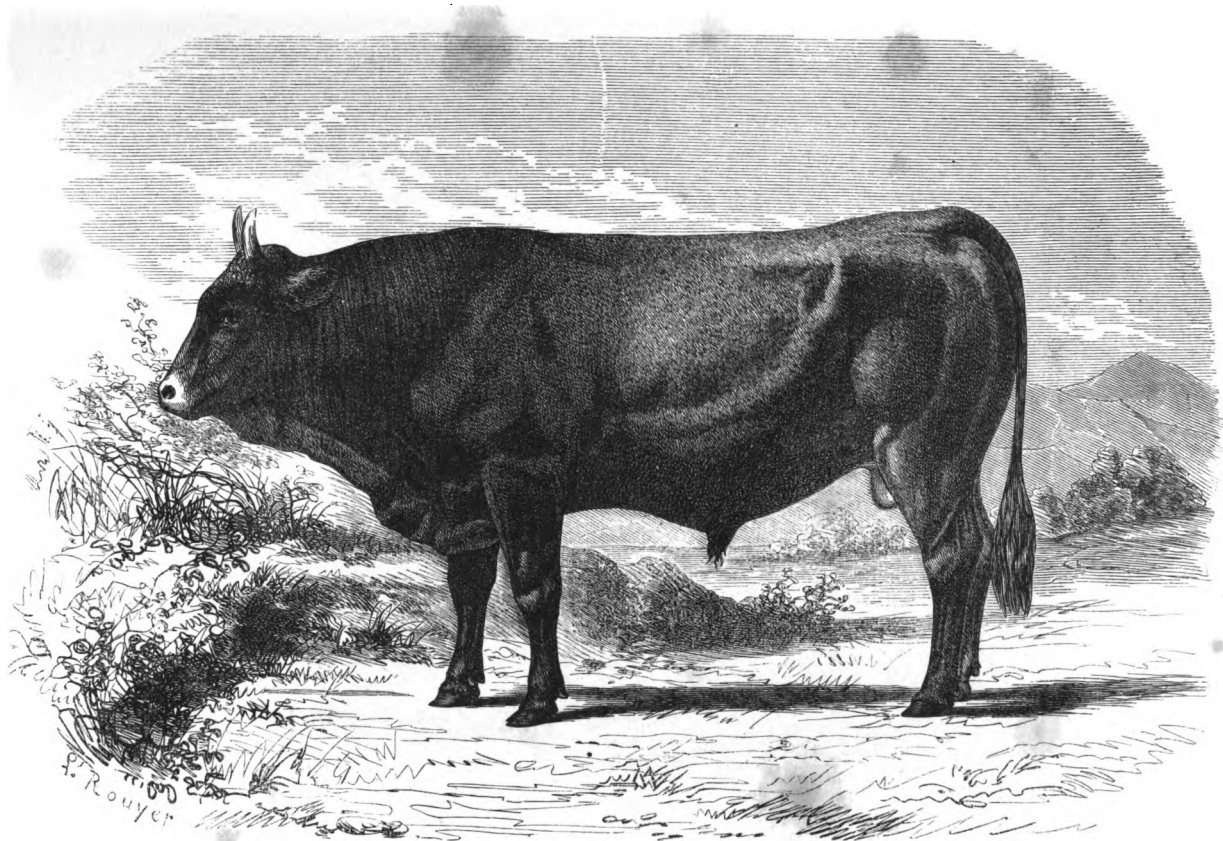


Fig. 17. — Taureau d'Aubrac (page 77).



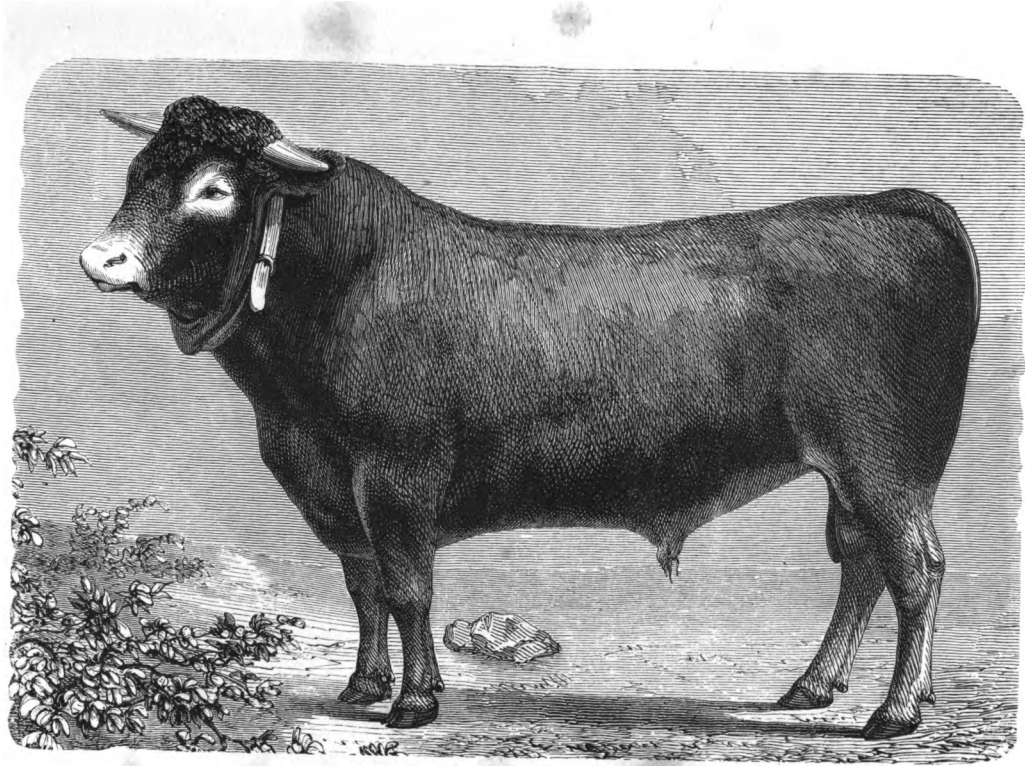


Fig. 18. — Taureau bazadais (page 95).



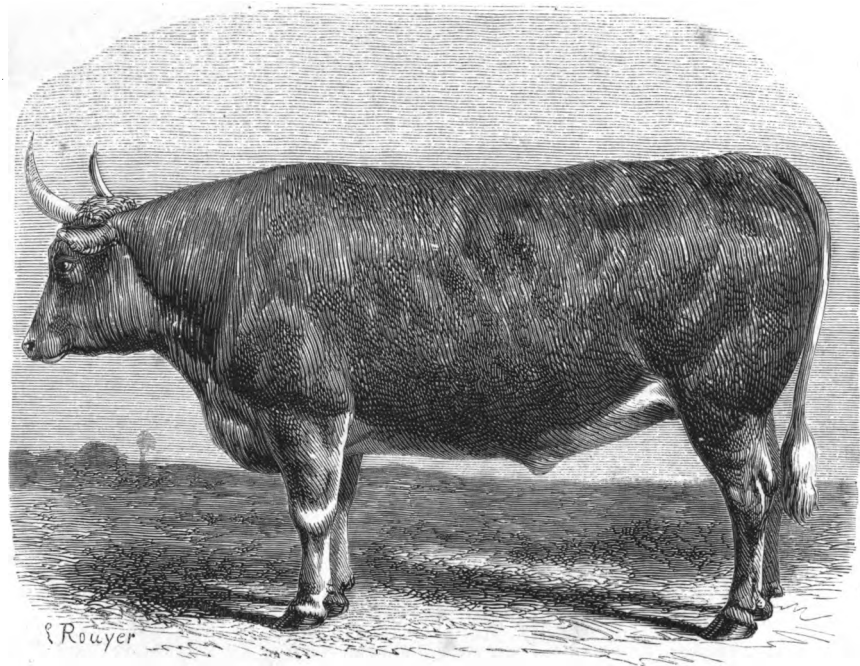


Fig. 19. — Bœuf de race bourbonnaise (page 100).



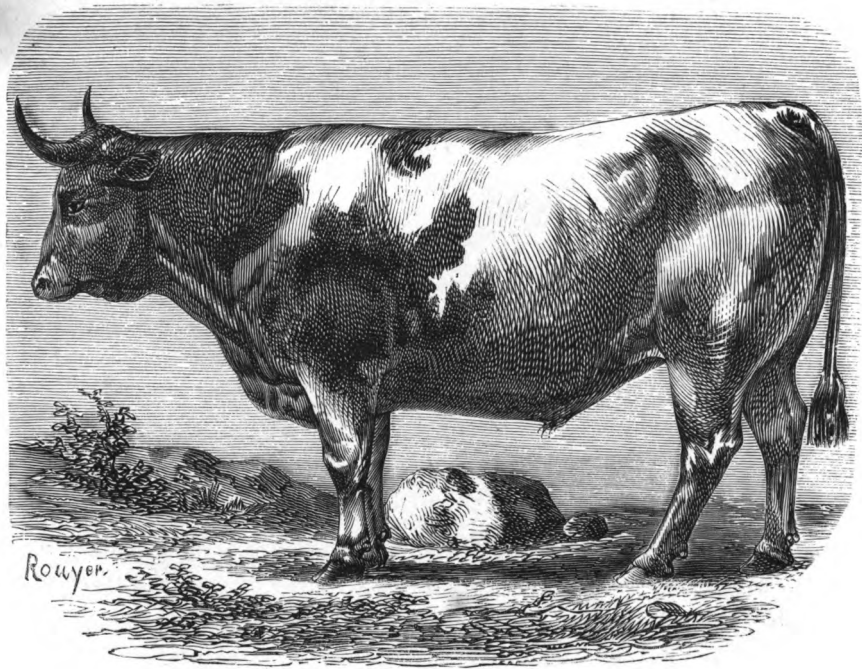


Fig. 20. — Bœuf de race bressane (page 105).





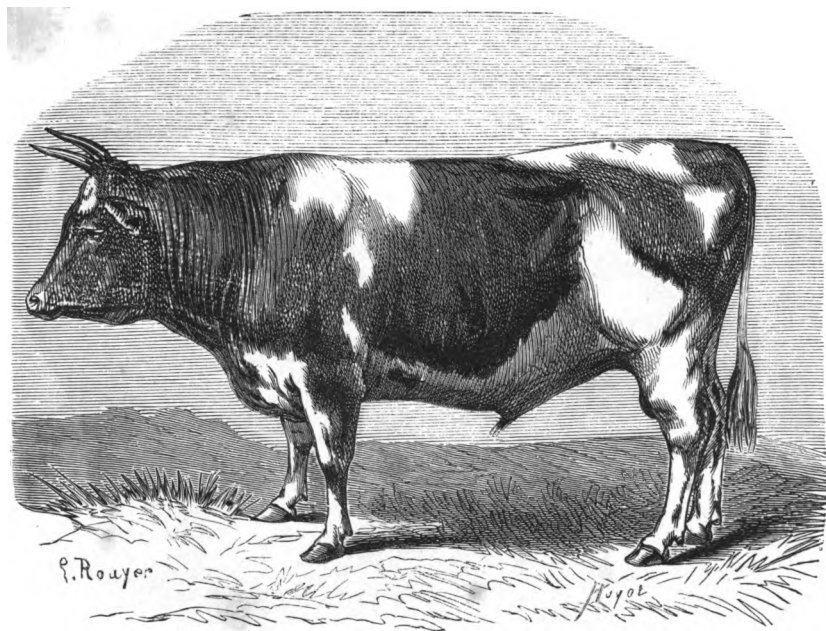


Fig. 21. — Taureau de race bretonne (page 110).

1875

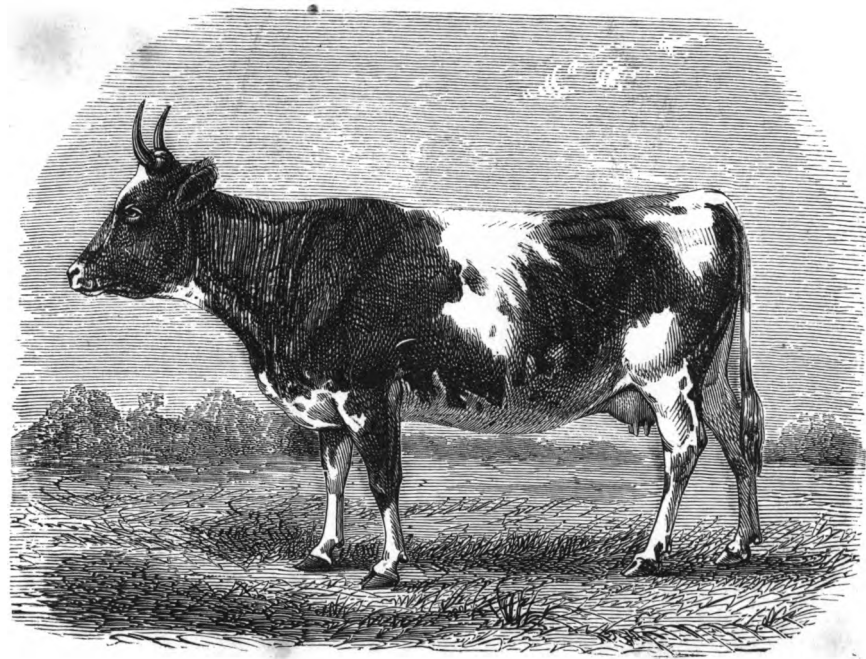
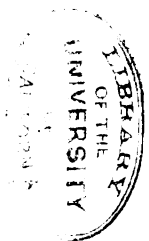


Fig. 22. — Vache bretonne (page 110).



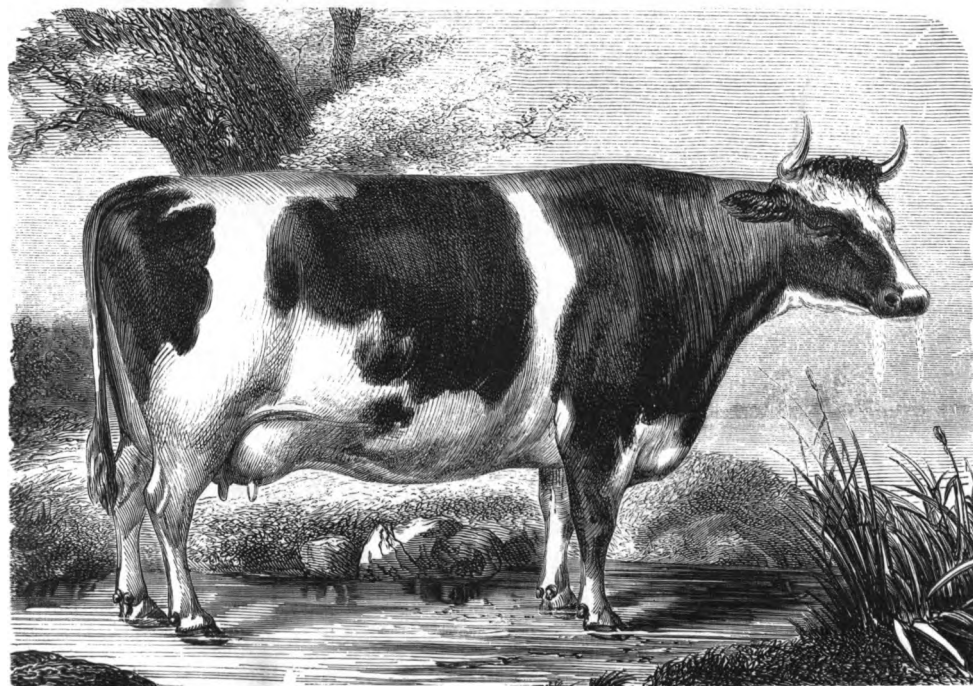


Fig. 23. — Vache durham-bretonne,  $\frac{3}{4}$  sang durham (page 126).

Digitized by Google

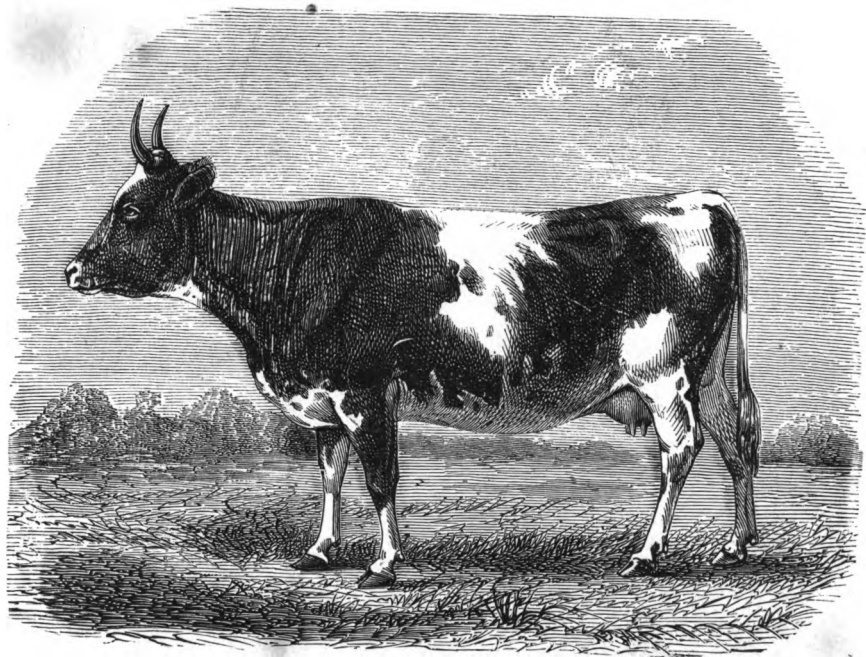
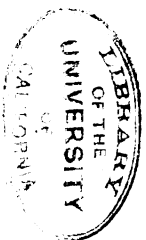


Fig. 22. — Vache bretonne (page 110).





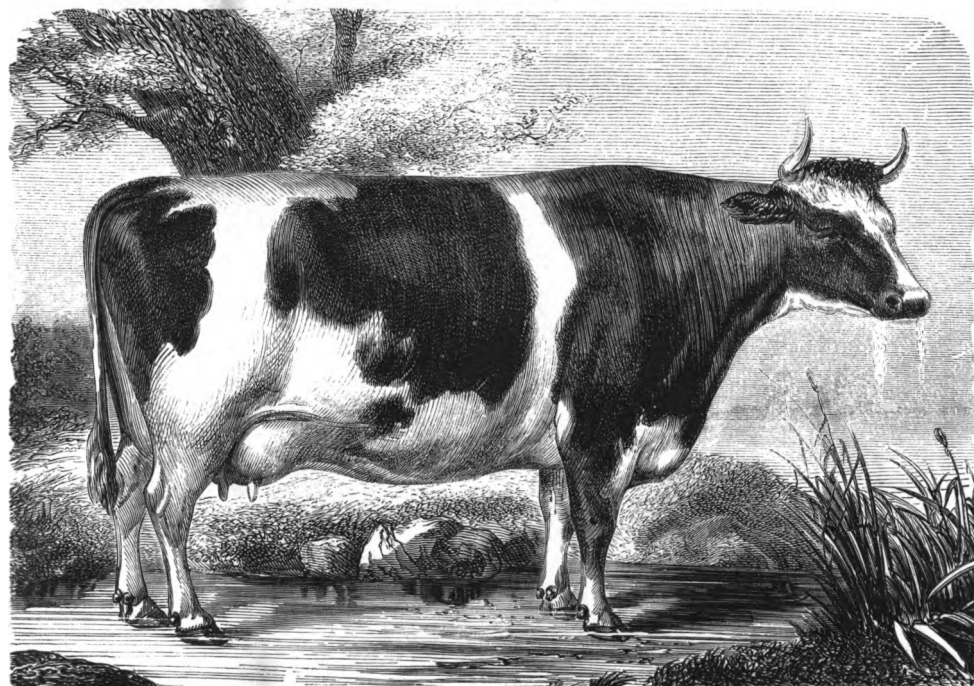
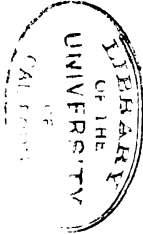


Fig. 23. — Vache durham-bretonne,  $\frac{3}{4}$  sang durham (page 126).



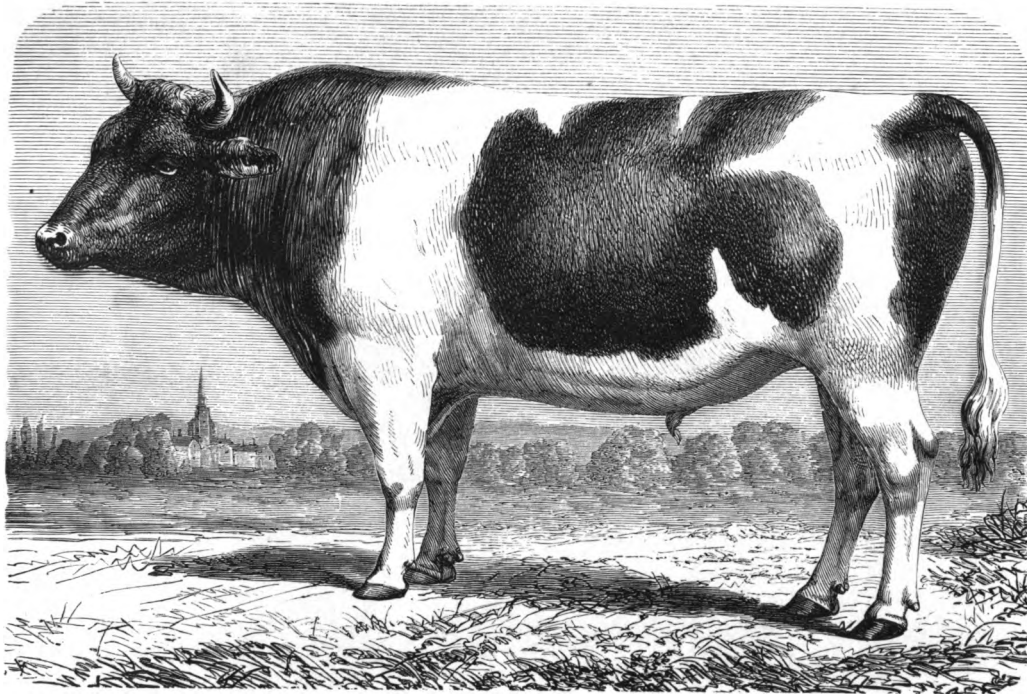
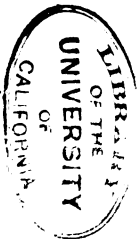


Fig. 24. — Bœuf durham - ayrshire-breton, 1/2 sang (page 126).



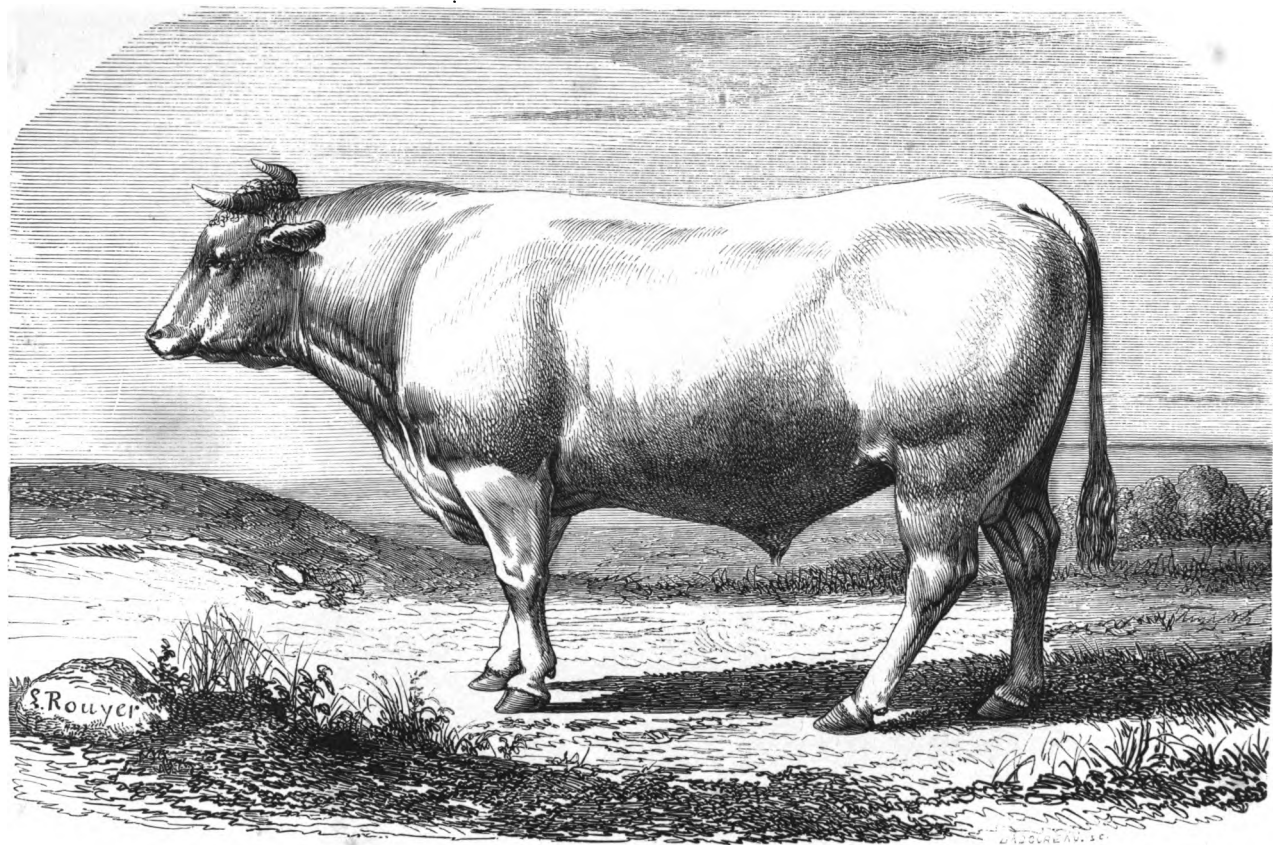


Fig. 25. — Taureau de race charolaise (page 136).



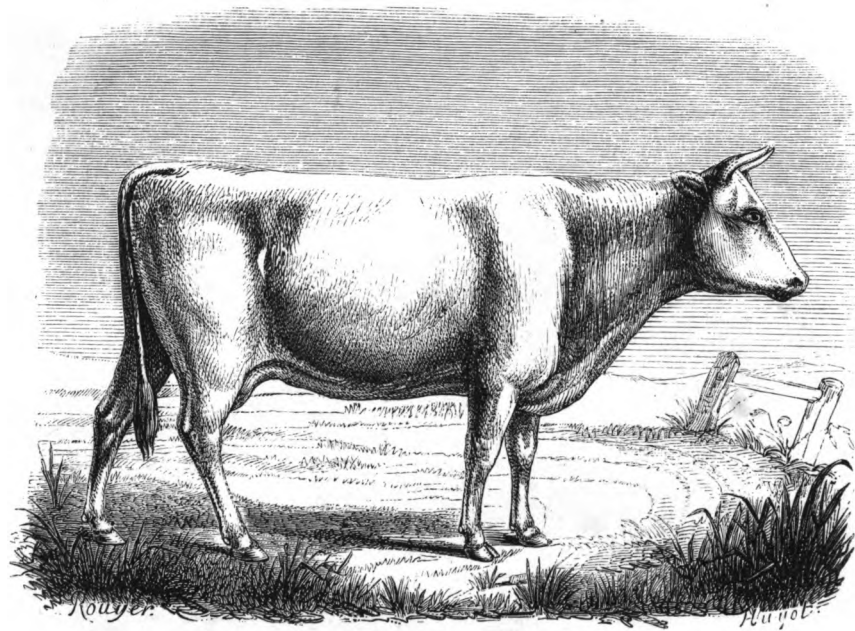
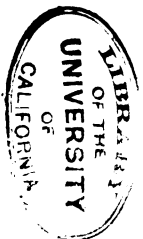


Fig. 26. — Vache comtoise, variété féminine (page 170).





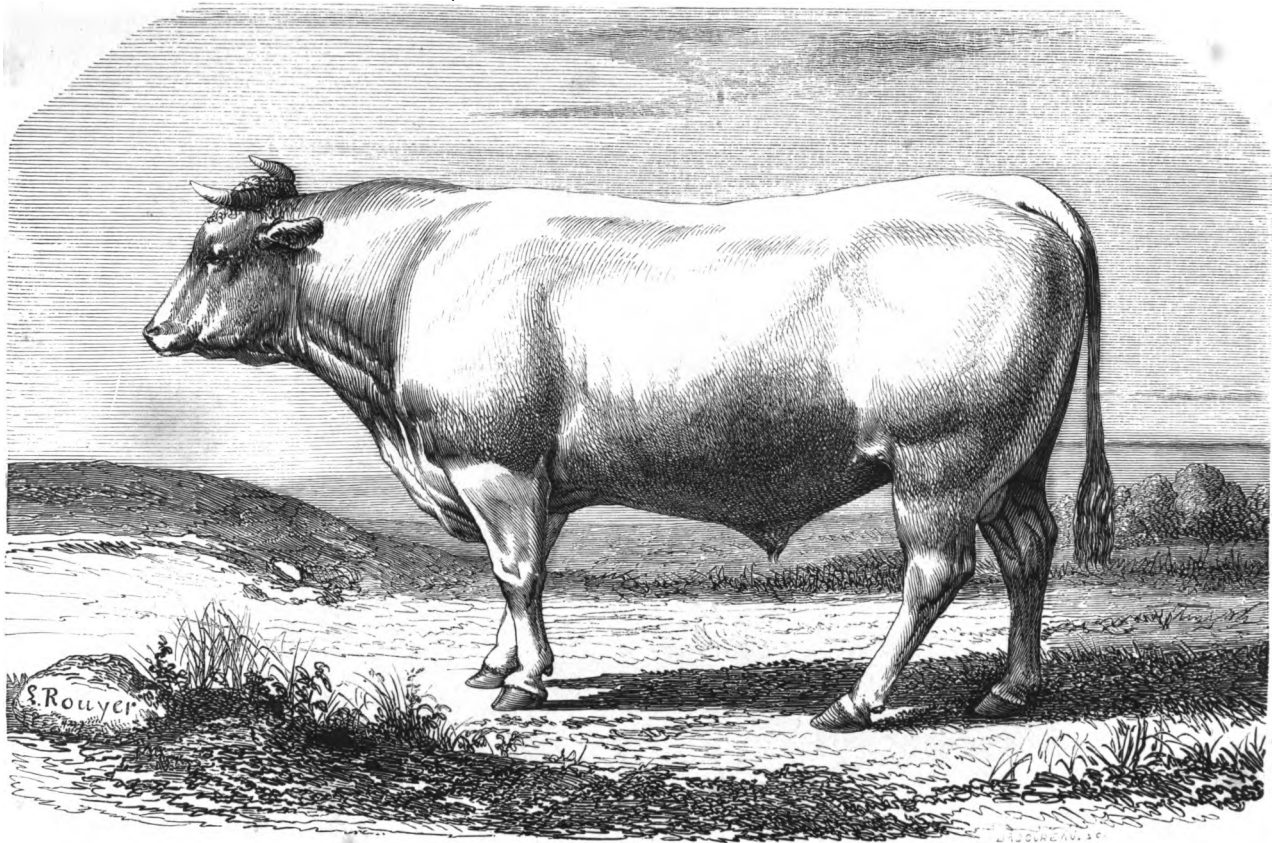


Fig. 25. — Taureau de race charolaise (page 136).



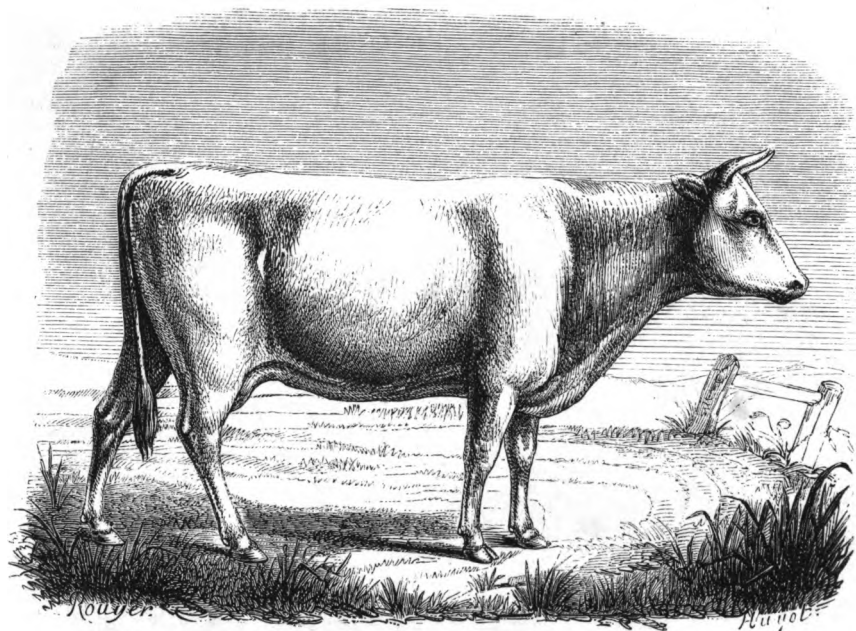
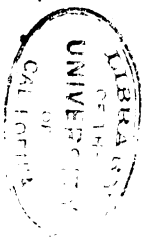


Fig. 26. — Vache comtoise, variété féminine (page 170).



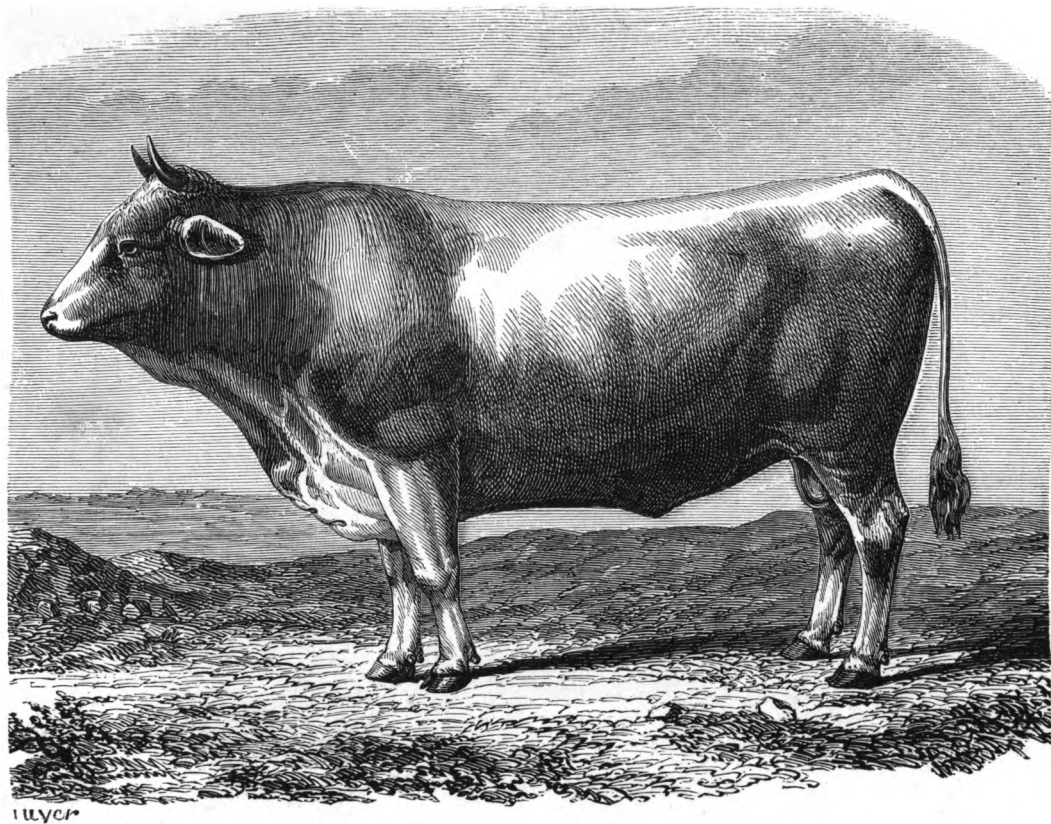


Fig. 27. — Taureau comtois, variété tourache (page 170).



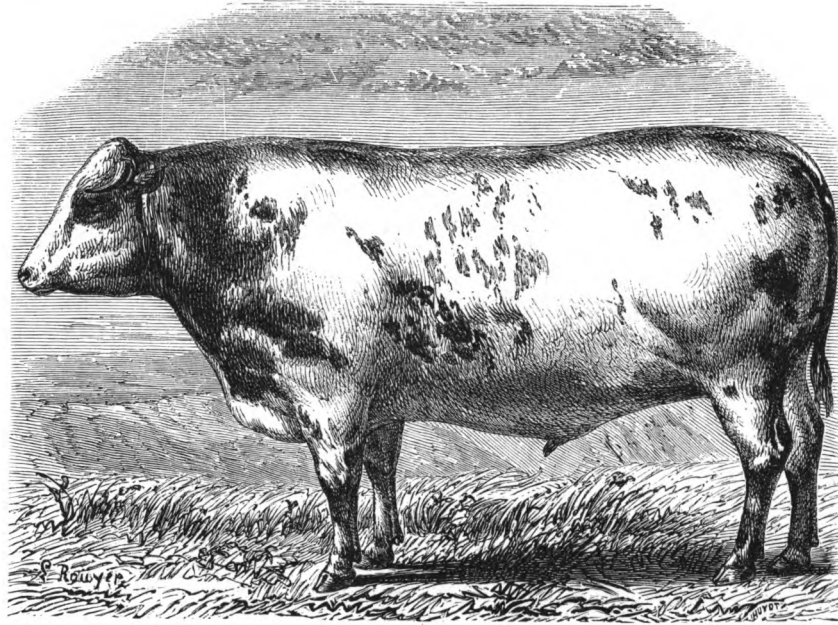


Fig 28. — Bœuf de la race de Durcet (page 184).





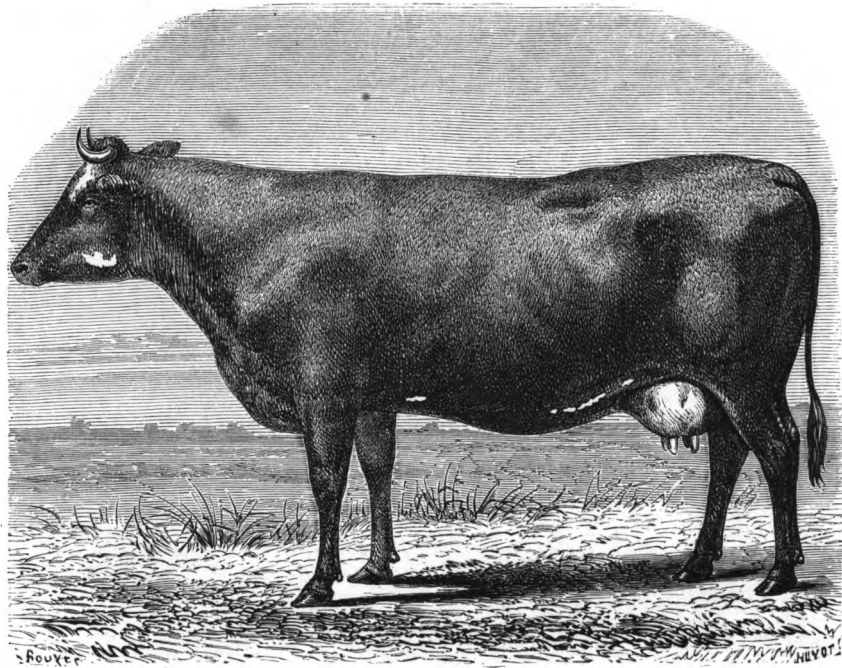


Fig. 29. — Vache de race flamande (page 188).



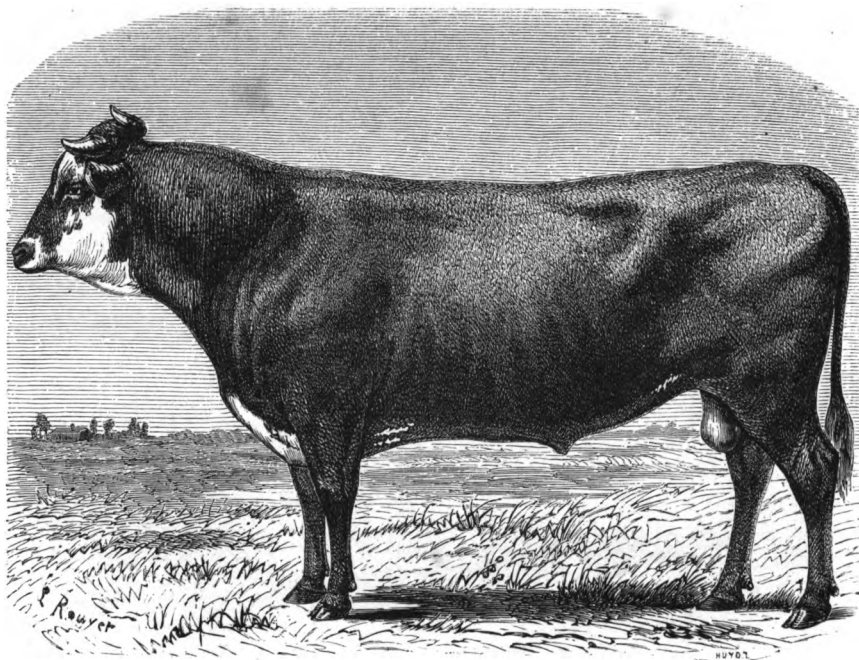
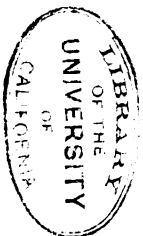


Fig. 30. — Taureau de race flamande (page 193).



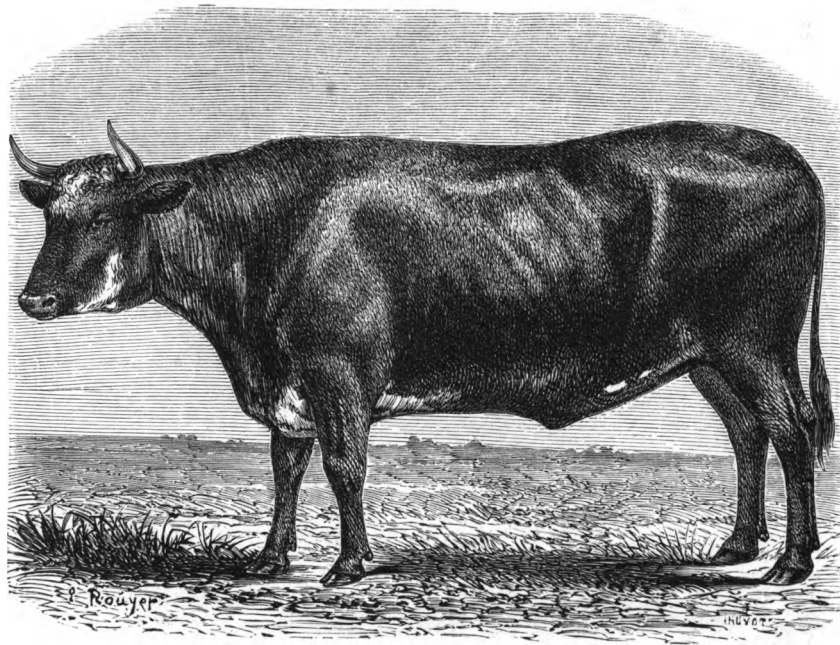
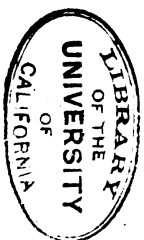


Fig. 31. — Bœuf de race flamande (page 195).



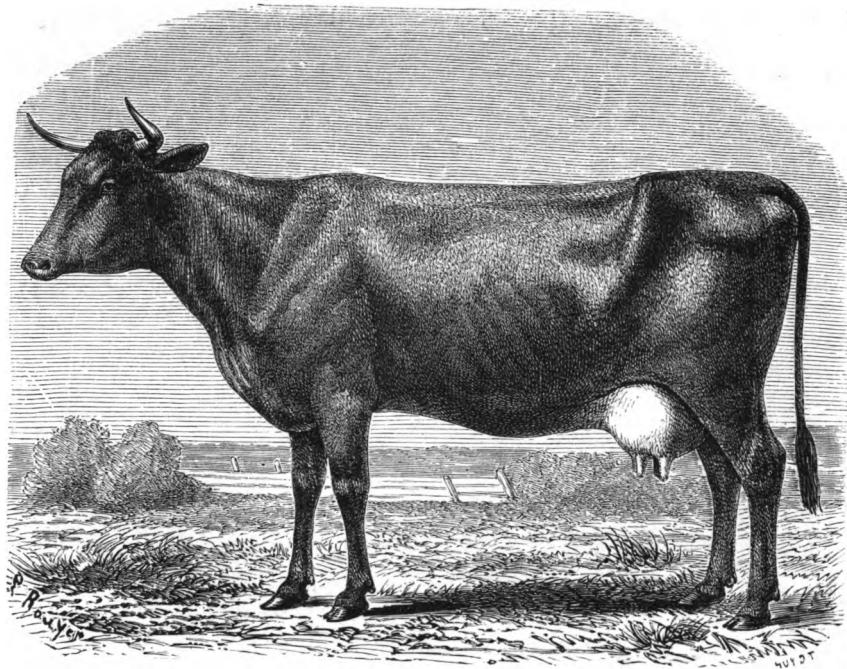


Fig. 32. — Race flamande, variété maroillaise (page 196).







Fig. 33. — Taureau garonnais (page 210).



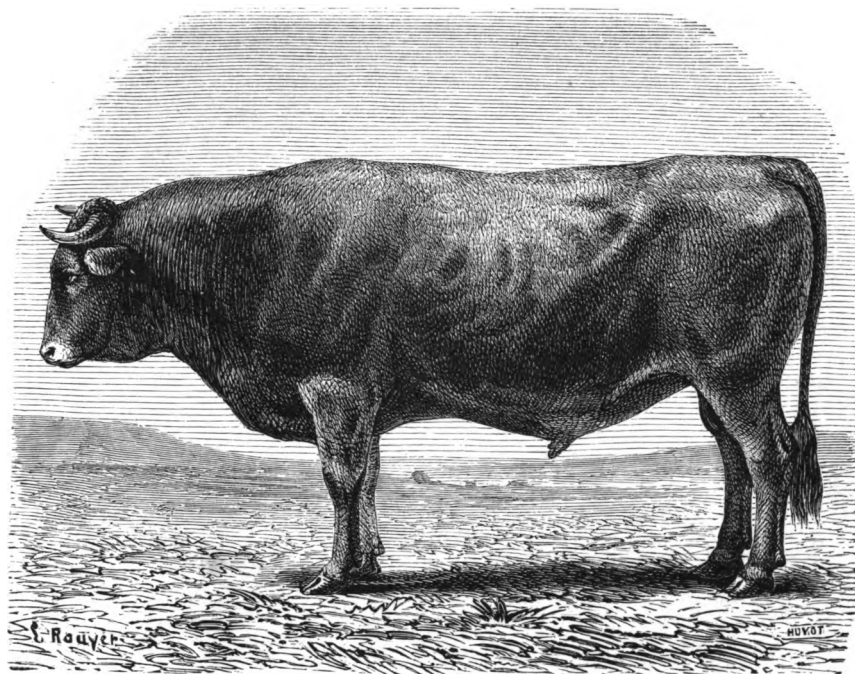


Fig. 34. — Taureau de race gasconne (page 221).

THE UNIVERSITY OF CHICAGO  
PRESS



Fig. 33. — Taureau garonnais (page 210).



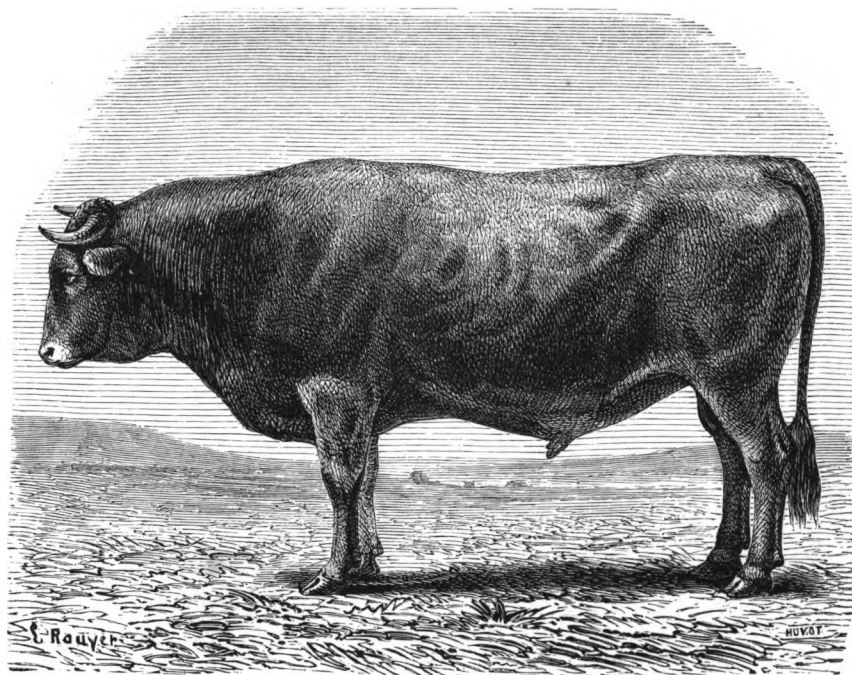
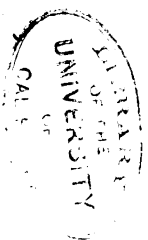


Fig. 34. — Taureau de race gasconne (page 221).





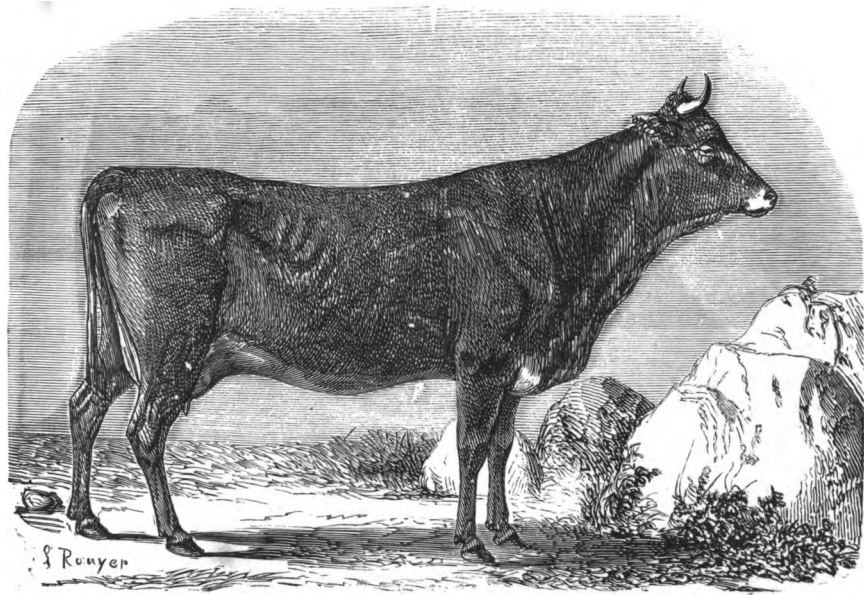


Fig. 35. — Vache du Gévaudan (page 225).



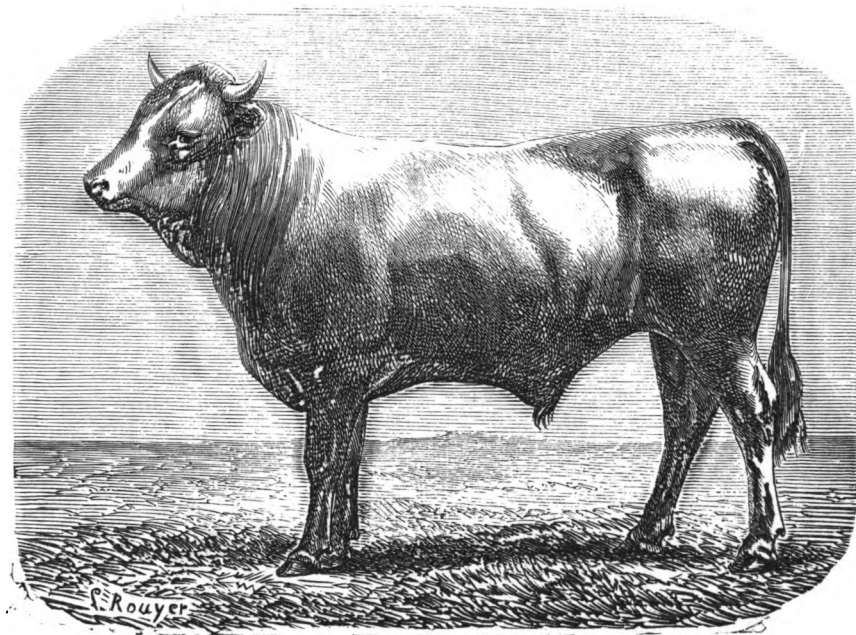
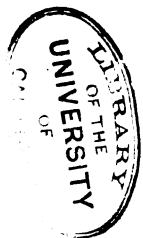


Fig. 36. — Taureau de race landaise (page 228).



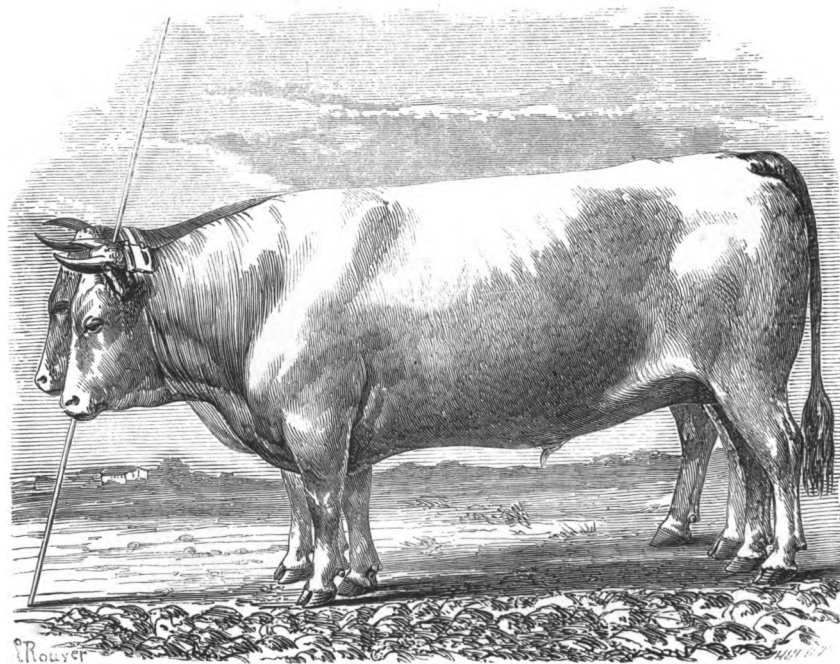
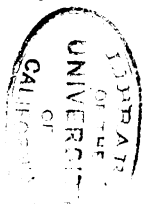


Fig. 37. — Bœufs de race limousine (page 231).



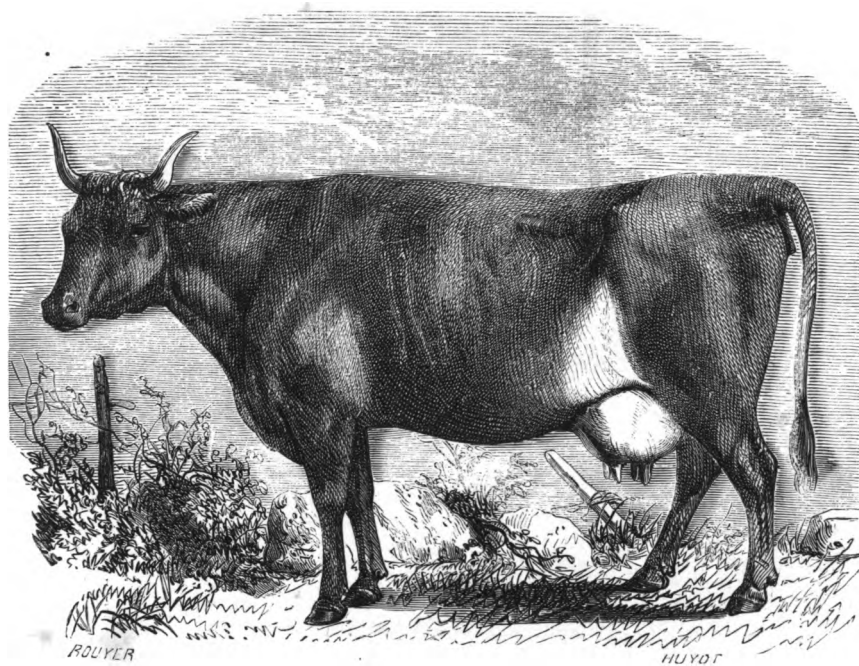
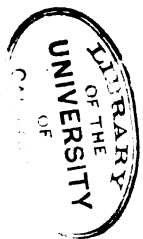


Fig. 38. — Vache de Lourdes, variété de la race des Pyrénées (page 237).





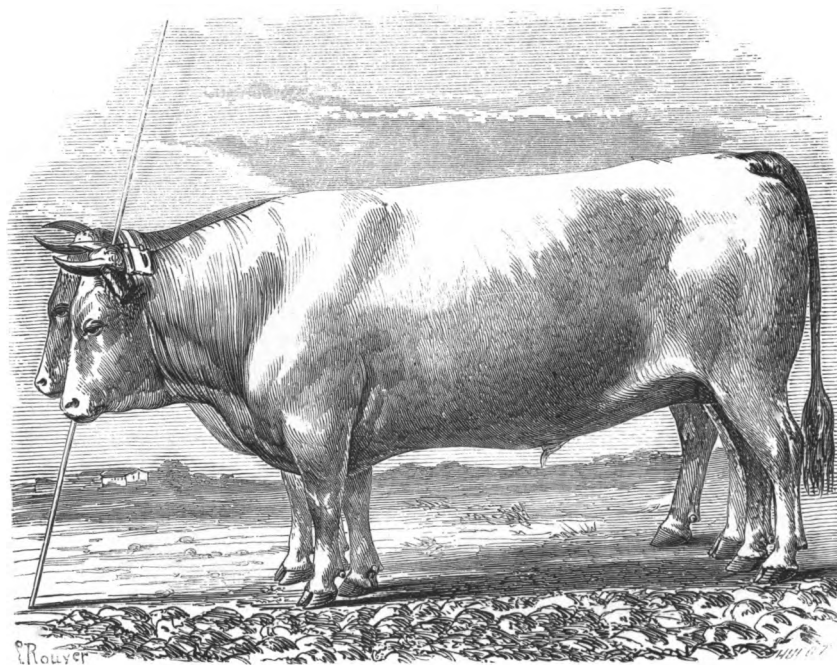
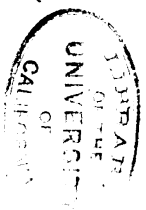


Fig. 37. — Bœufs de race limousine (page 231).



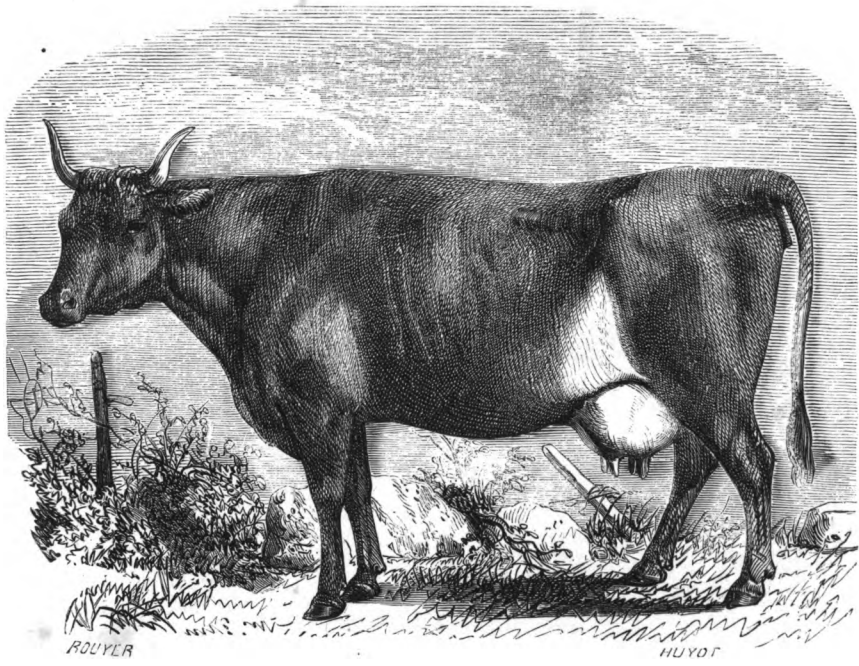
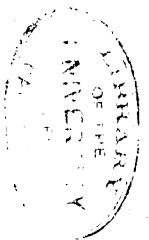


Fig. 38. — Vache de Lourdes, variété de la race des Pyrénées (page 237).



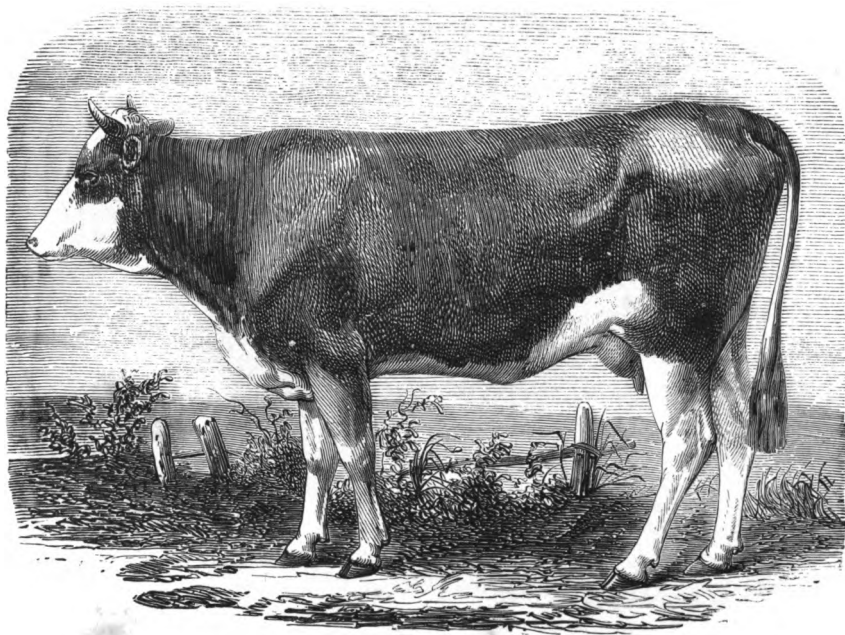
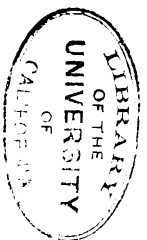


Fig. 39. — Vache de race mancelle (page 240).



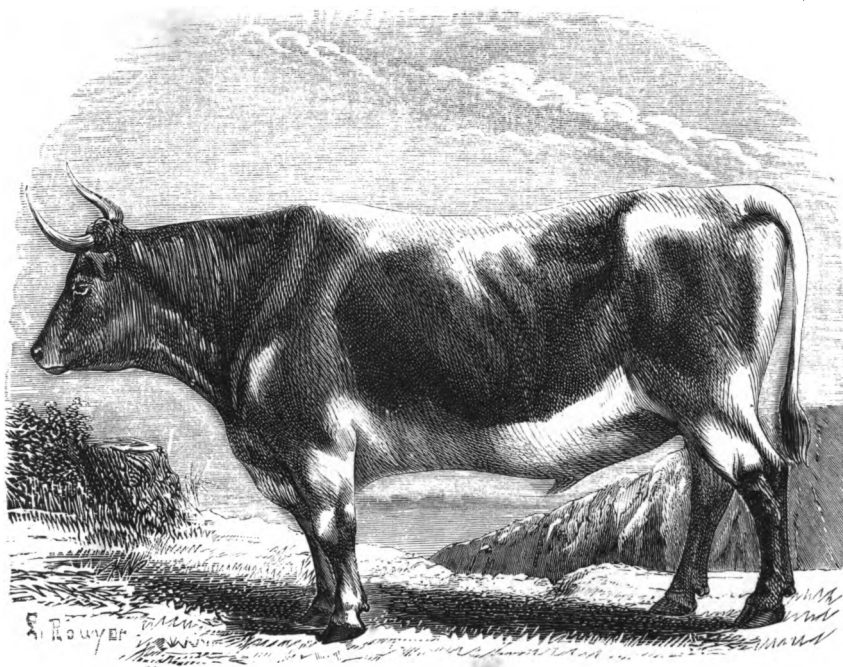


Fig. 40. — Bœuf du Morvan (page 253).





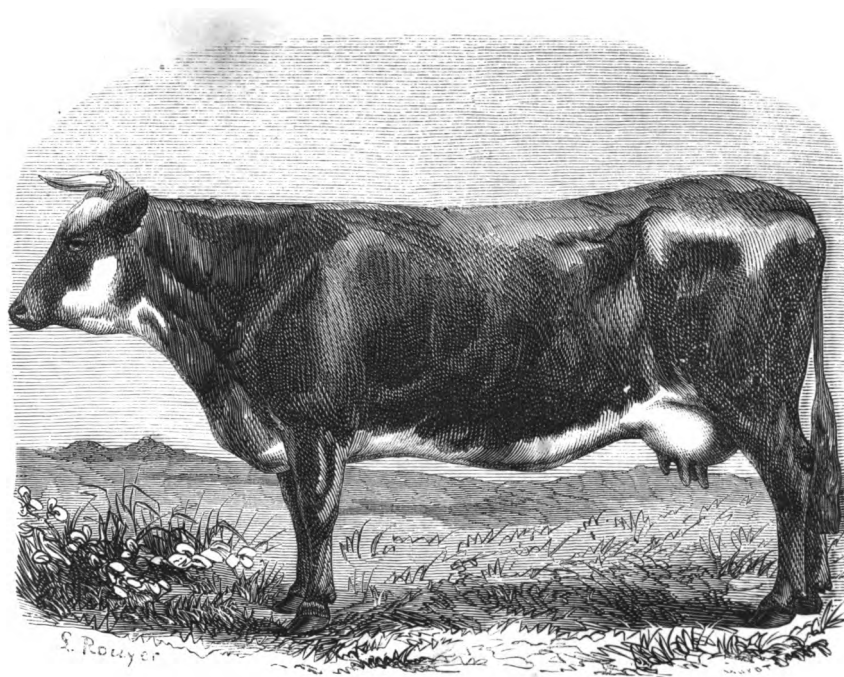
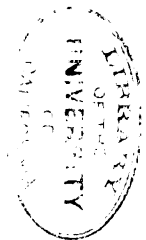


Fig. 41. — Race normande, variété cotentine (page 261).



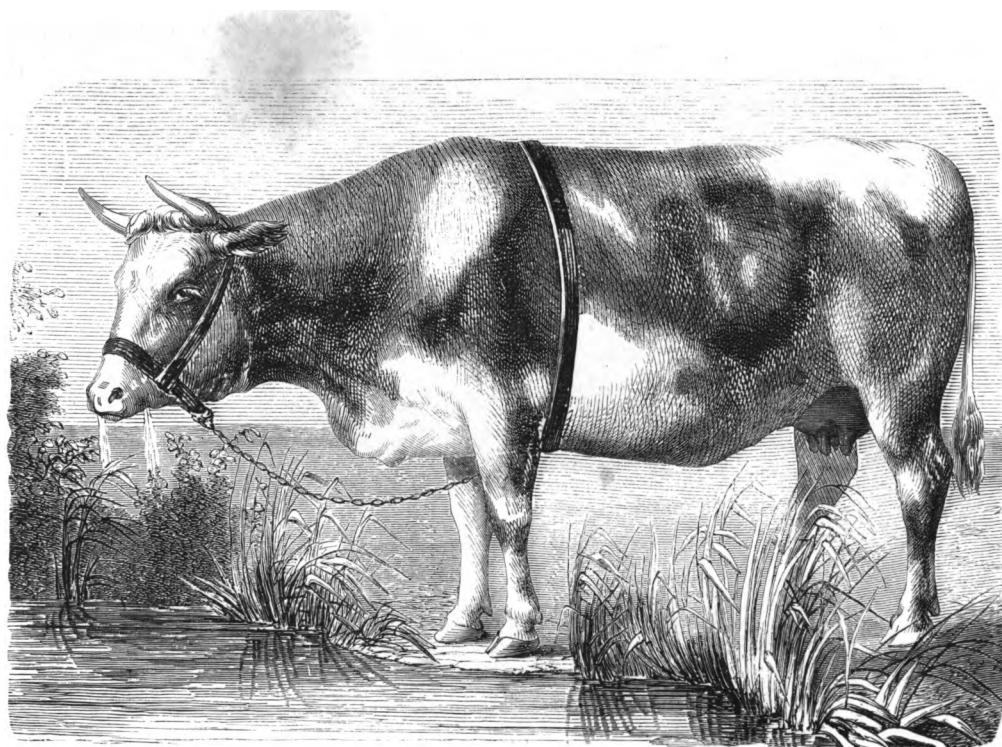
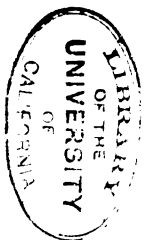


Fig. 42. — Race normande, variété augeronne [vache garnie de sa brèle] (page 263).



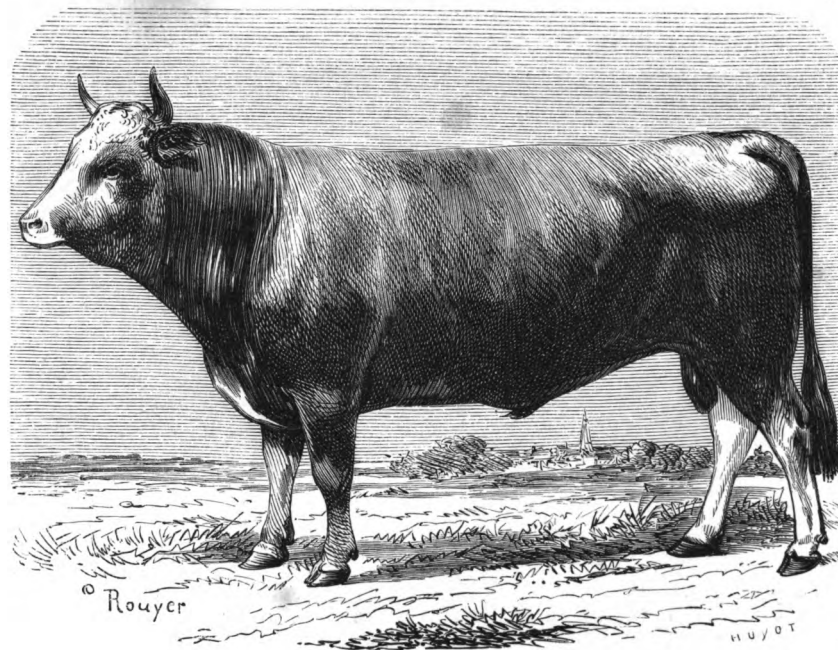


Fig. 43. — Taureau de race parthenaise (page 297).



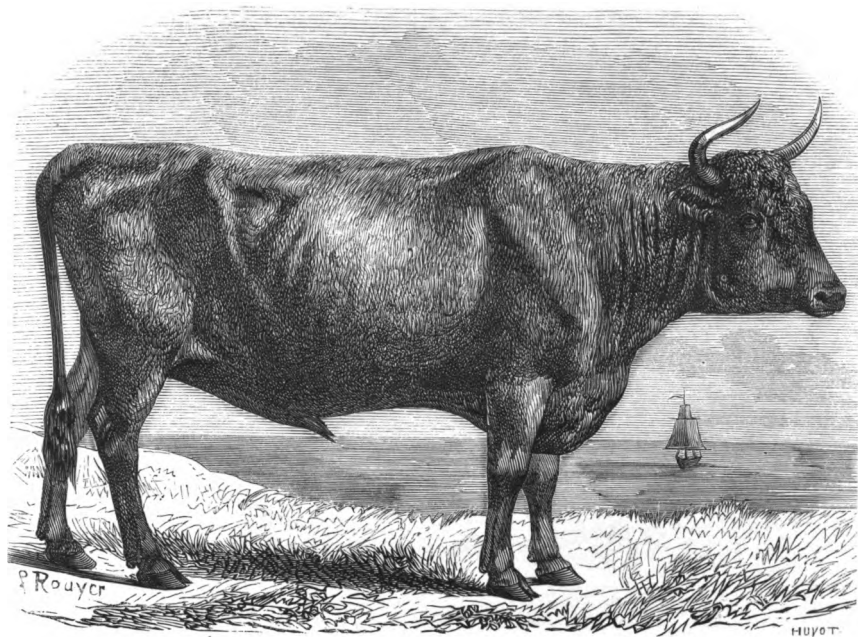


Fig. 44. — Bœuf maraichin, variété de la race parthenaise (page 298).





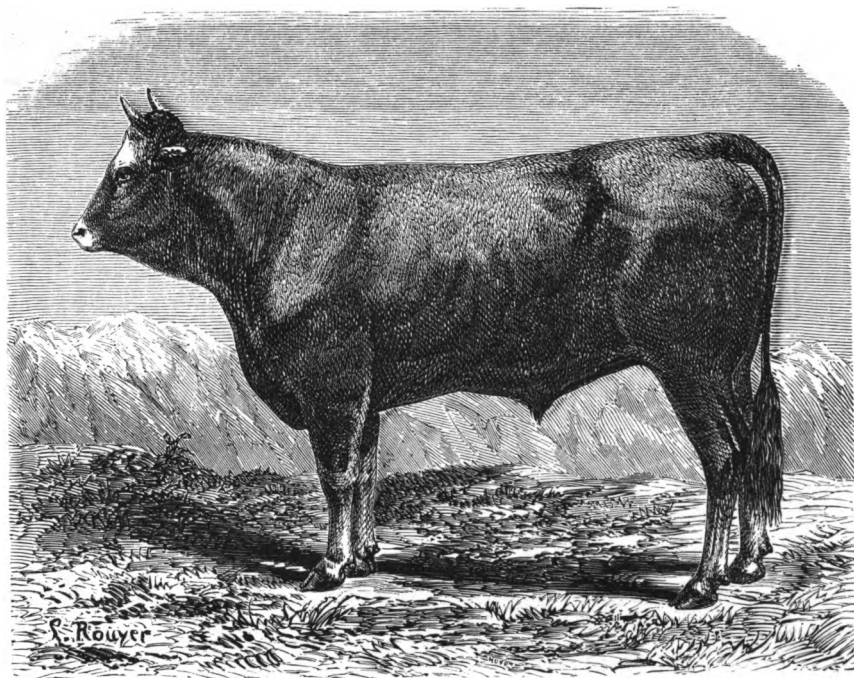


Fig. 45. — Race pyrénéenne, variété barétoune (page 308).



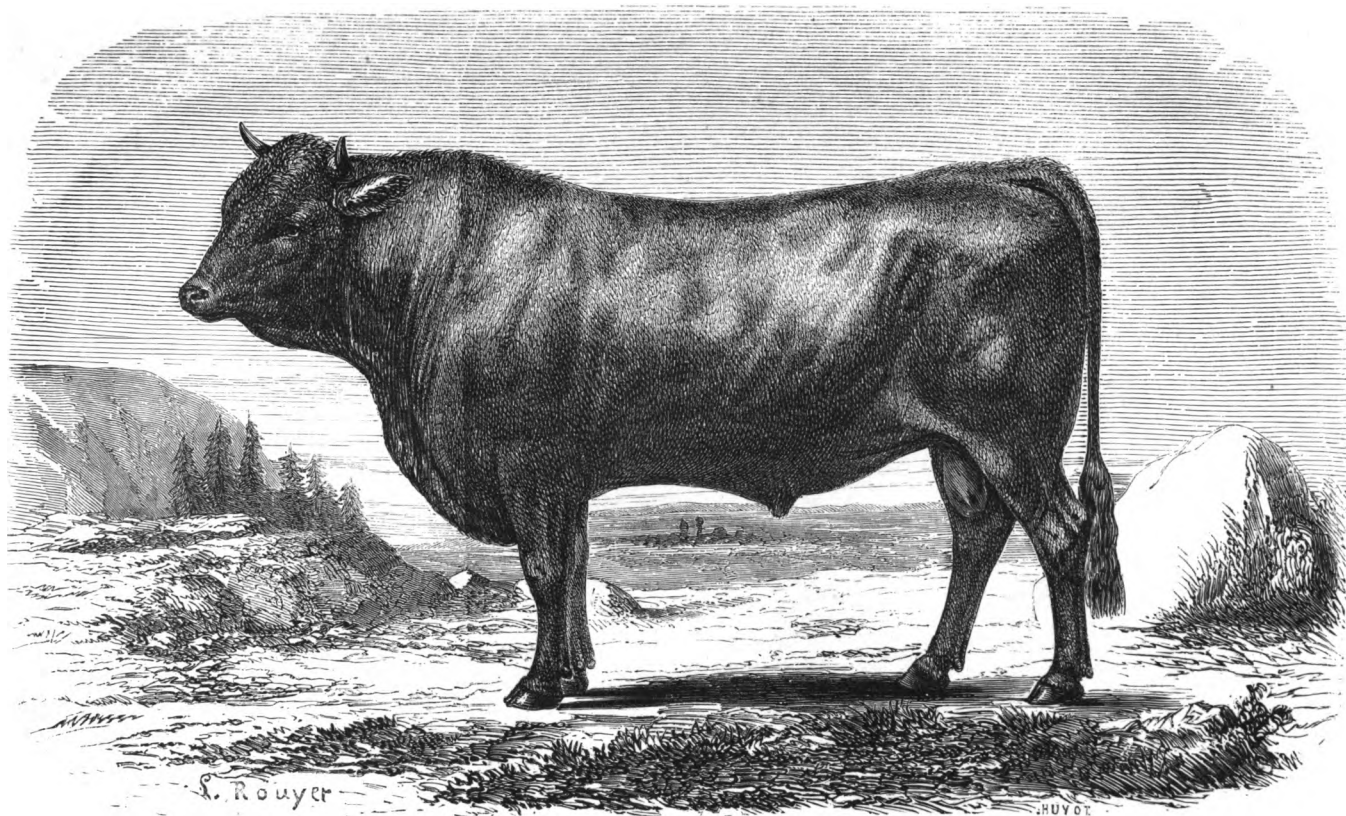


Fig. 46. — Taureau de la race de Salers (page 316).



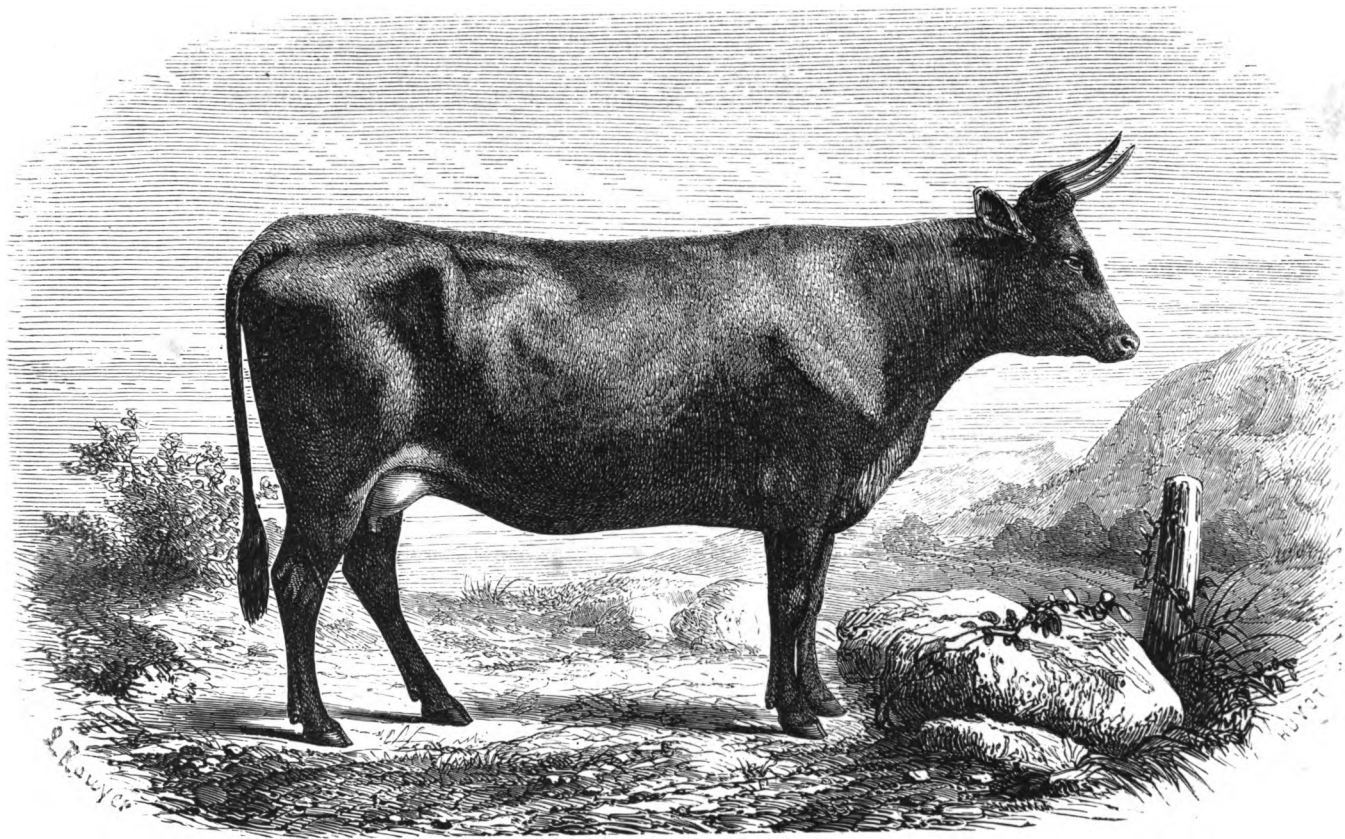


Fig. 47. — Vache de la race de Salers (page 327).



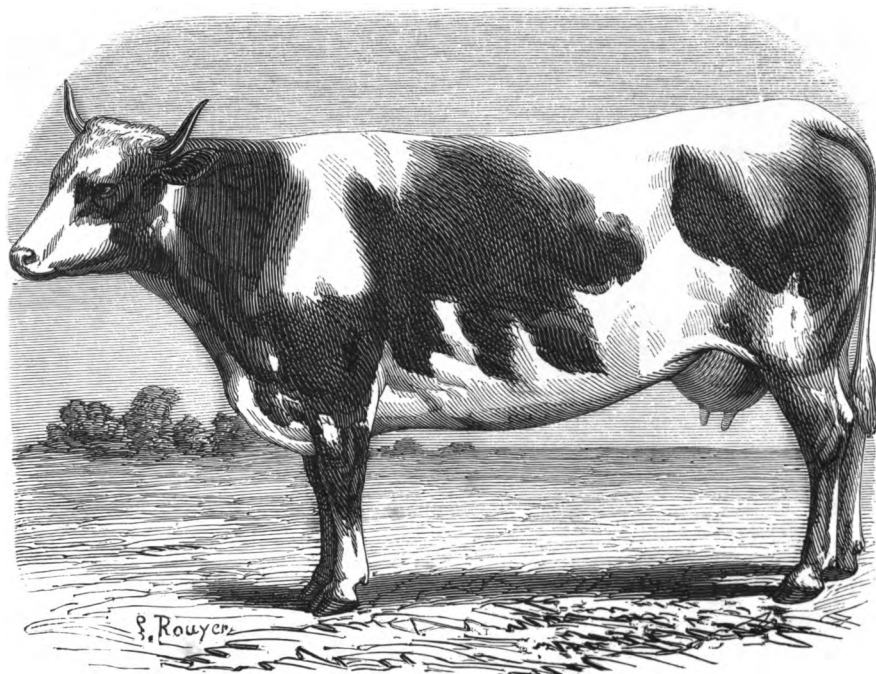


Fig. 48. — Vache de race vosgienne (page 335).

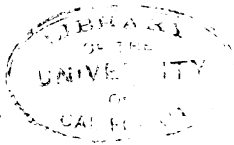






Fig. 49. — Taureau de race alderney (page 351).



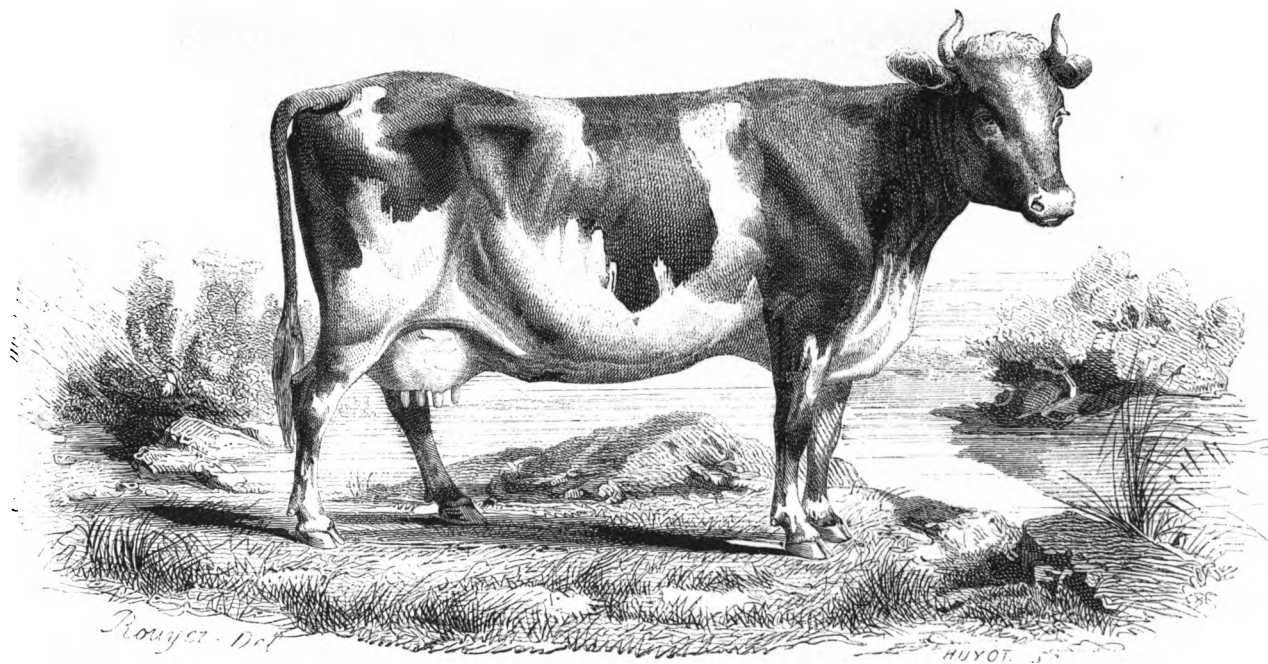


Fig. 50. — Vache de race alderney (page 351).





Fig. 51. — Vache d'Angus. (page 379).



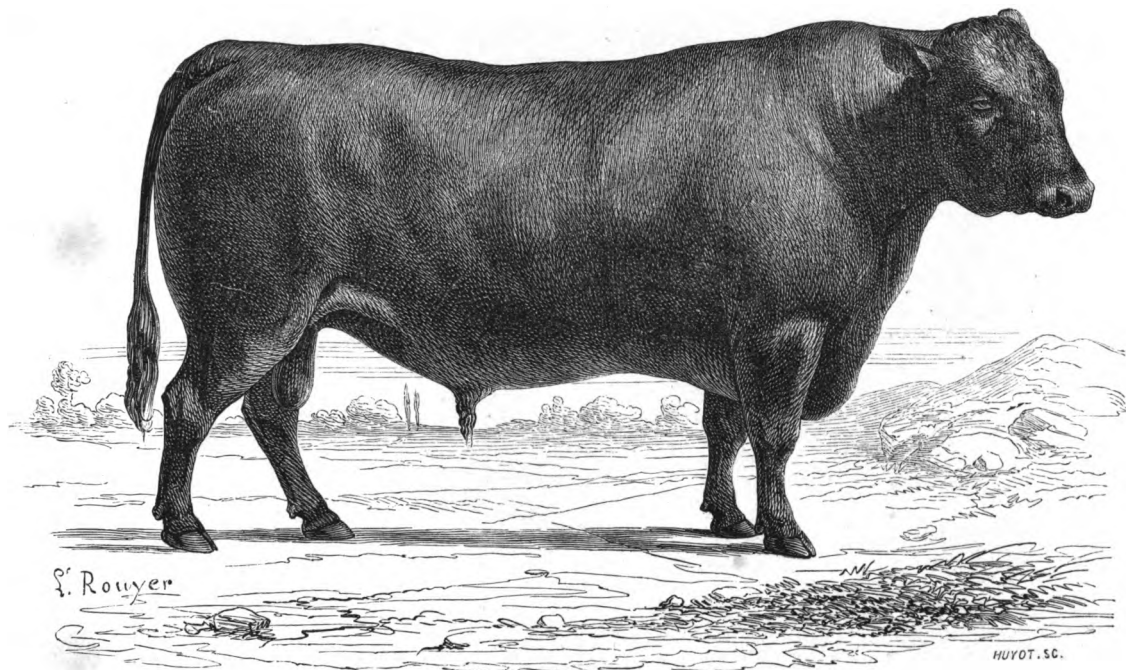
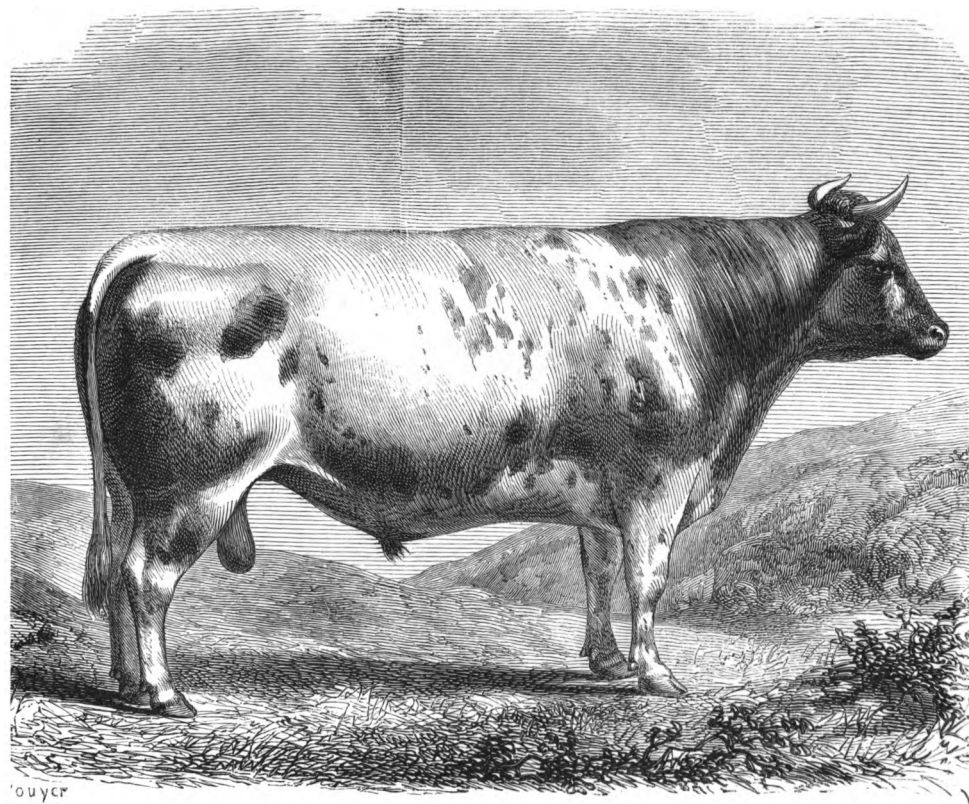


Fig. 52. — Taureau d'Angus (page 384).

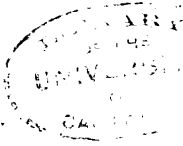


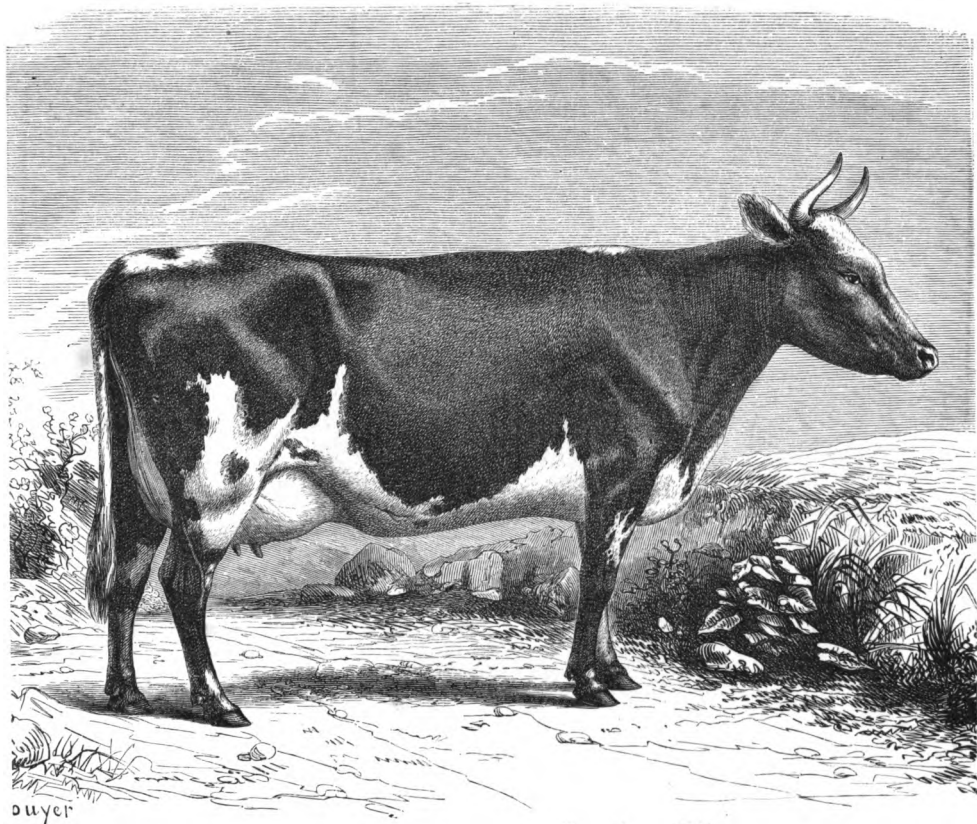




ouyer

Fig. 53. — Taureau de la race d'Ayr (page 394).





ouyer

Fig. 54. — Vache de la race d'Ayr (page 394).



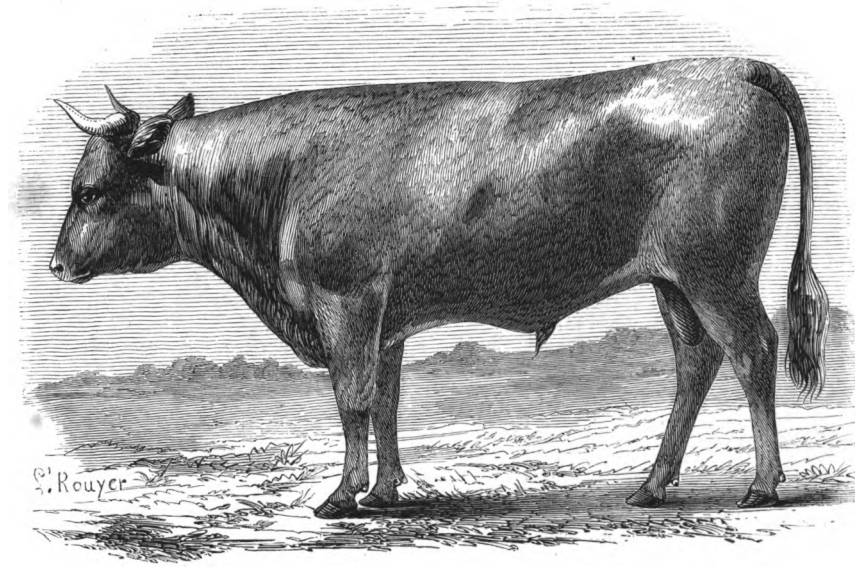


Fig. 55. — Taureau de Devon (page 406).

100  
100  
100

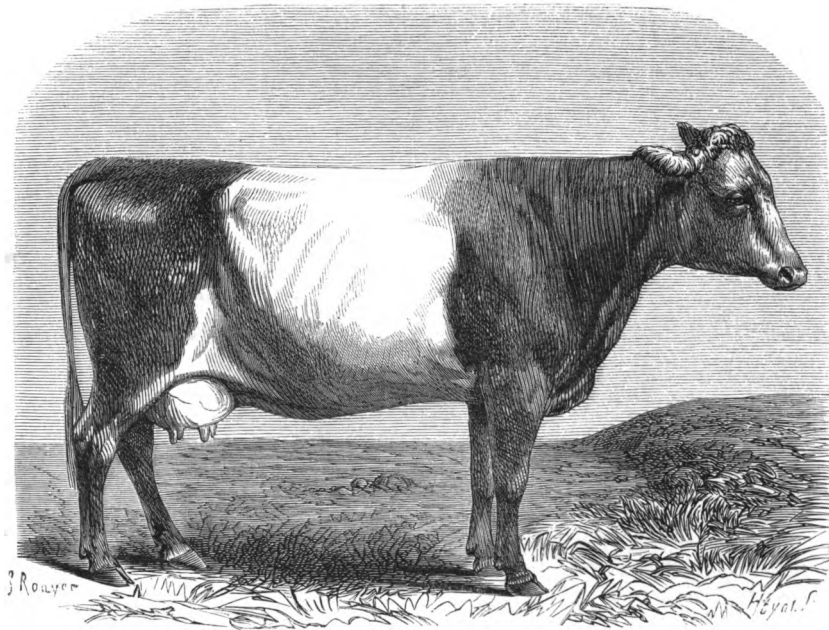


Fig. 56. — Vache drapée du Somertshire (page 410).





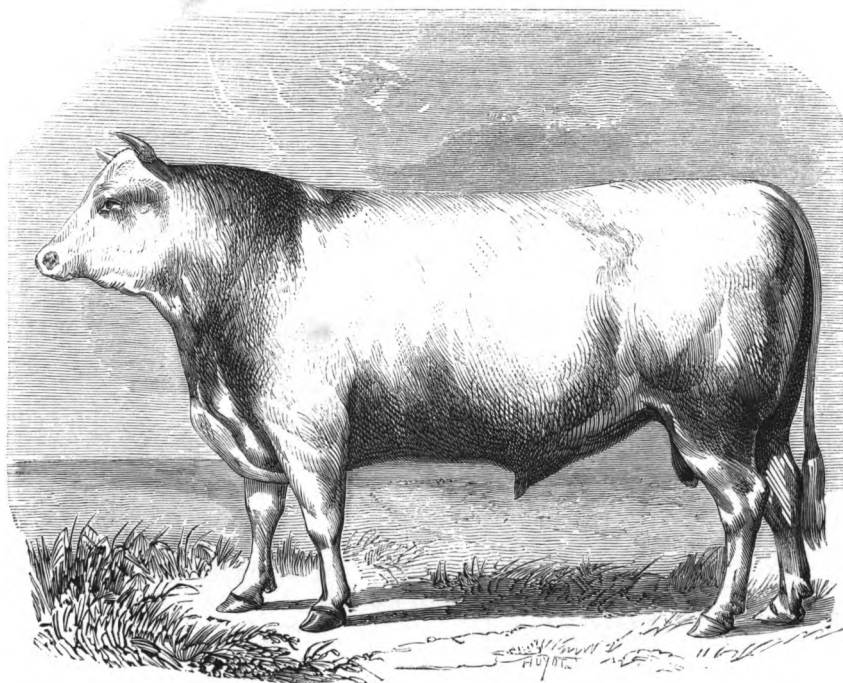


Fig. 57. — Taureau de race Durham (page 418).



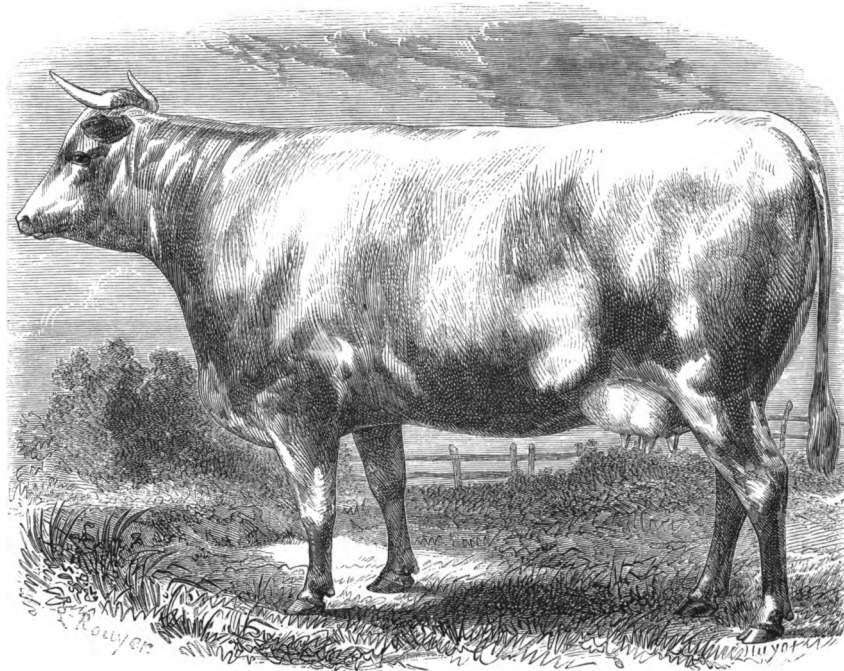
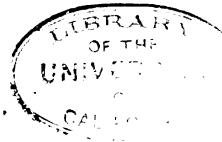


Fig. 58. — Vache de Durham (page 418).



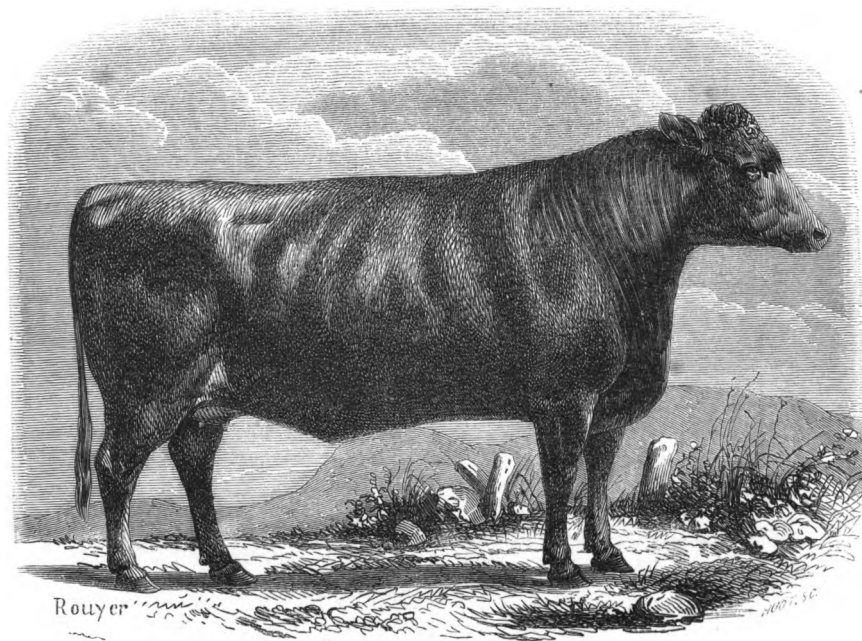


Fig. 59. — Vache de race Galloway (page 450).



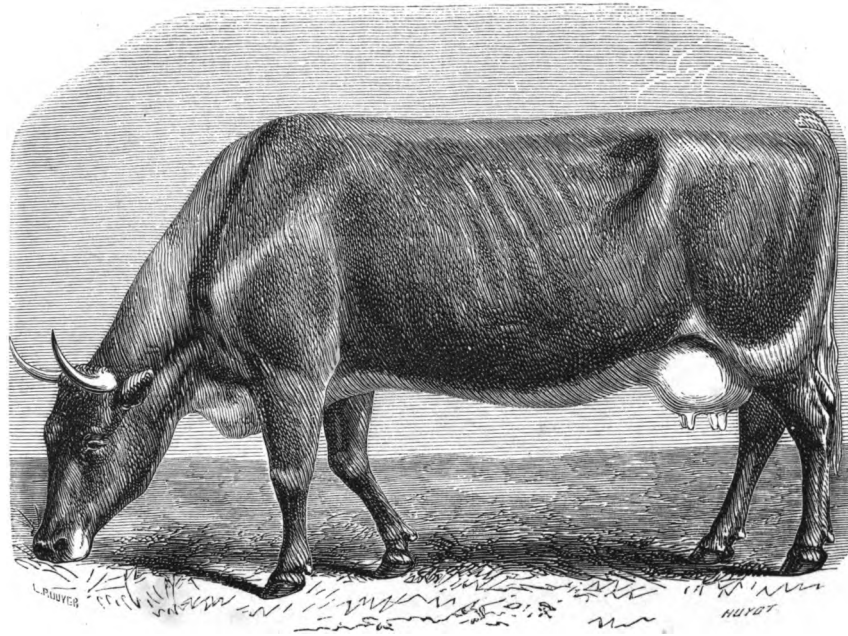


Fig. 60. — Vache du Glamorgan (page 453).





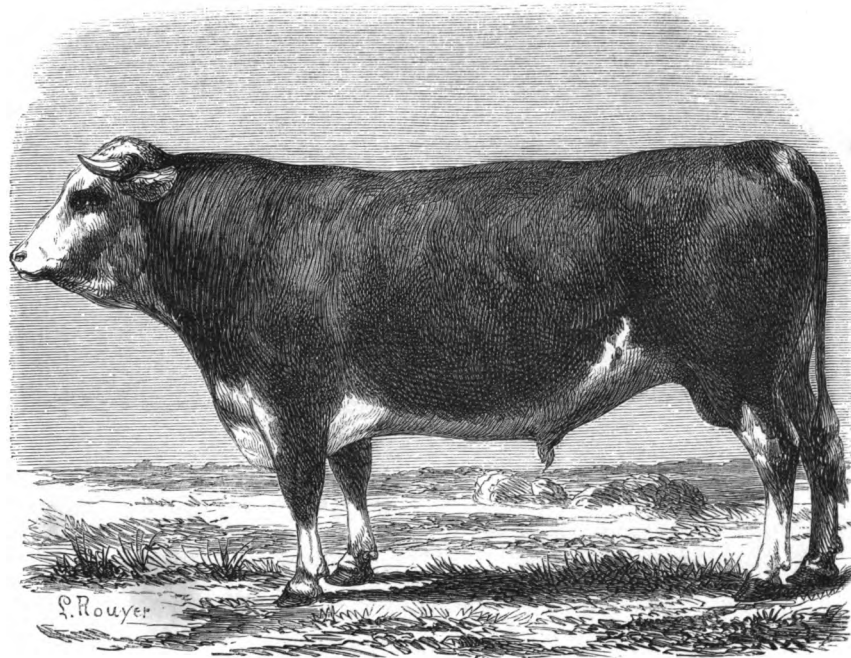


Fig. 61. — Taureau de Hereford (page 458).



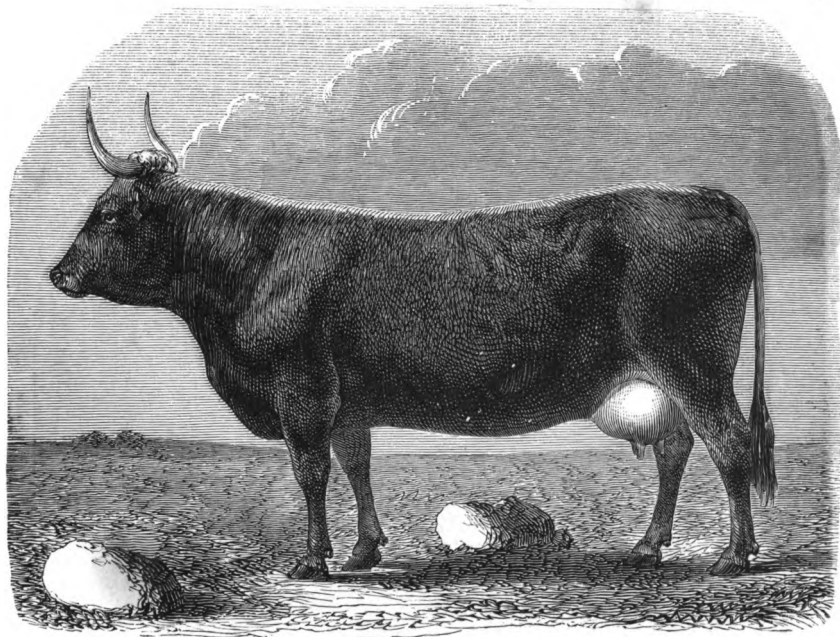


Fig. 62. — Vache du Kerry (page 460).



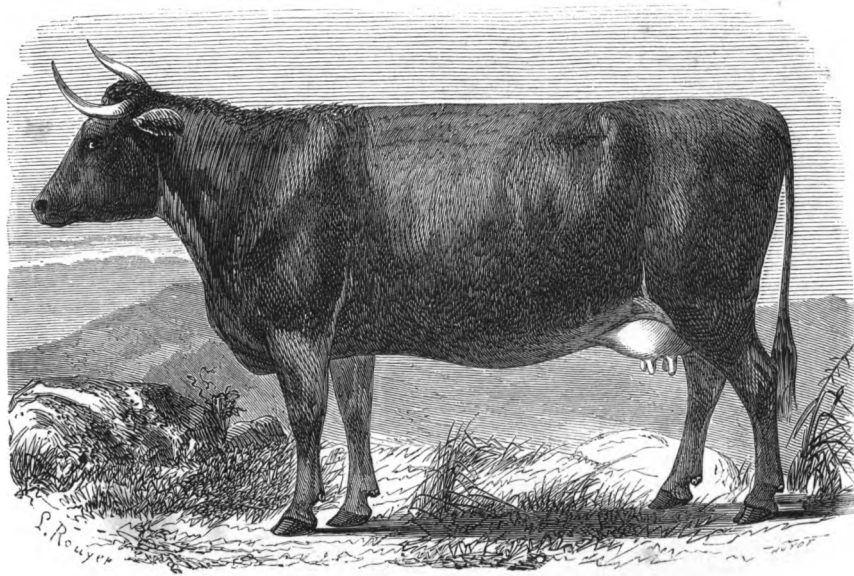
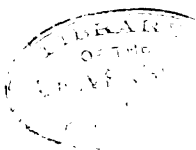


Fig. 63. — Vache de Pembroke (page 463).



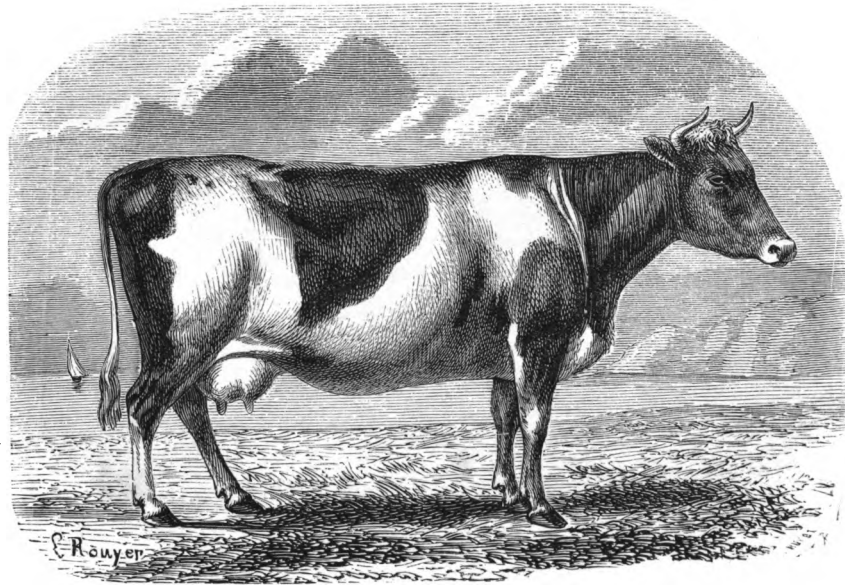


Fig. 64. — Vache de Schetland (page 467).





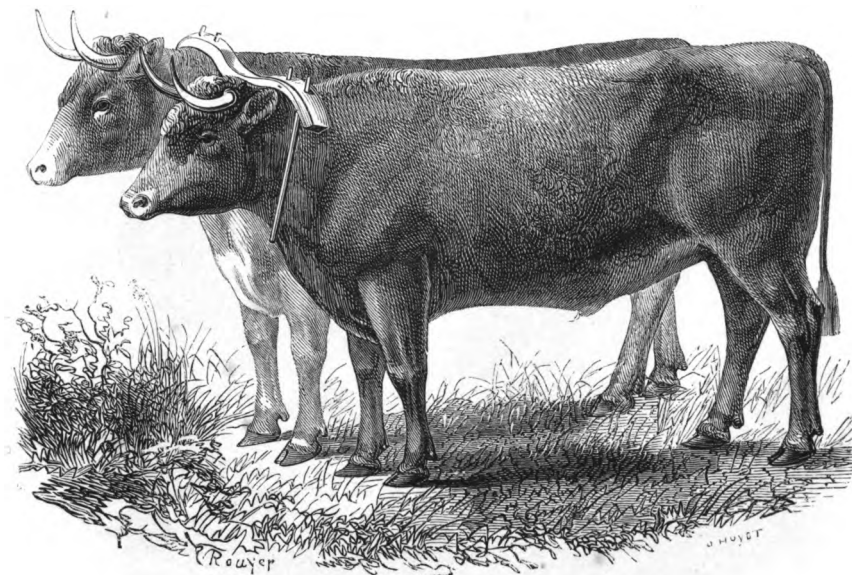


Fig. 65. — Bœufs de Sussex (page 472).



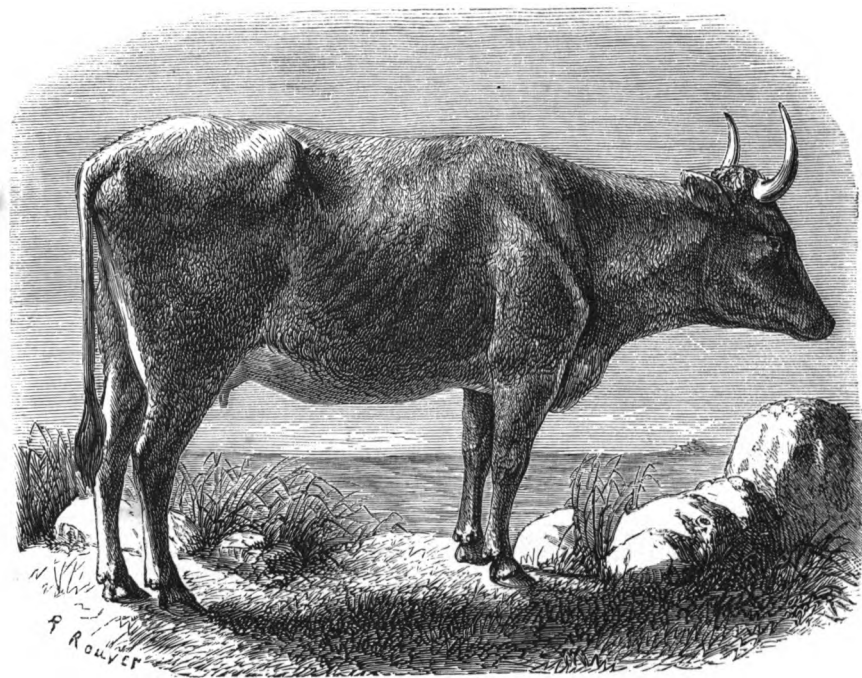


Fig. 66. — Vache de West-Higland (page 476).

UNIVERSITY  
OF  
MADISON



Fig. 67. — Vache de race hollandaise (page 484).



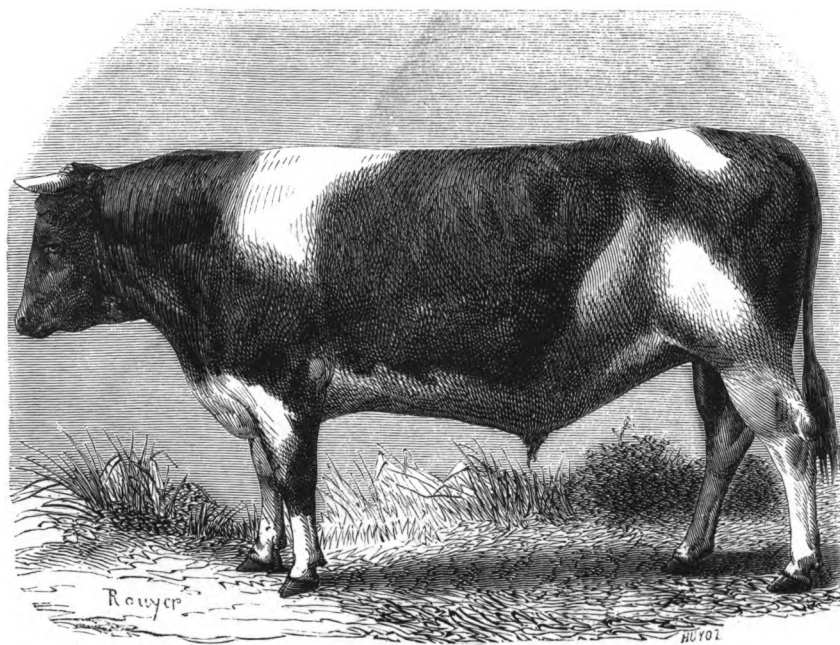


Fig. 68. — Taureau de race hollandaise (page 484).





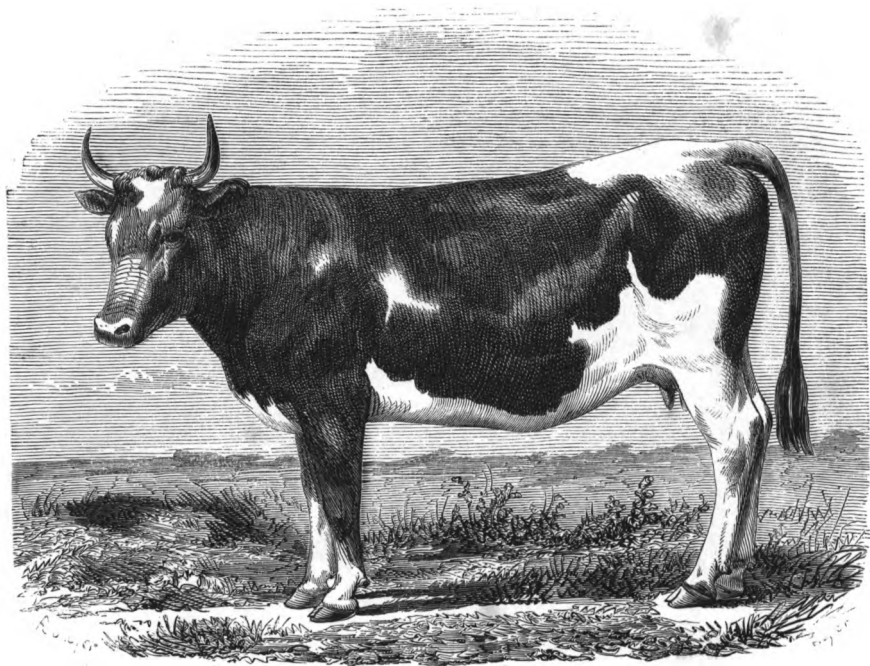


Fig. 69. — Vache du Jutland (page 491).



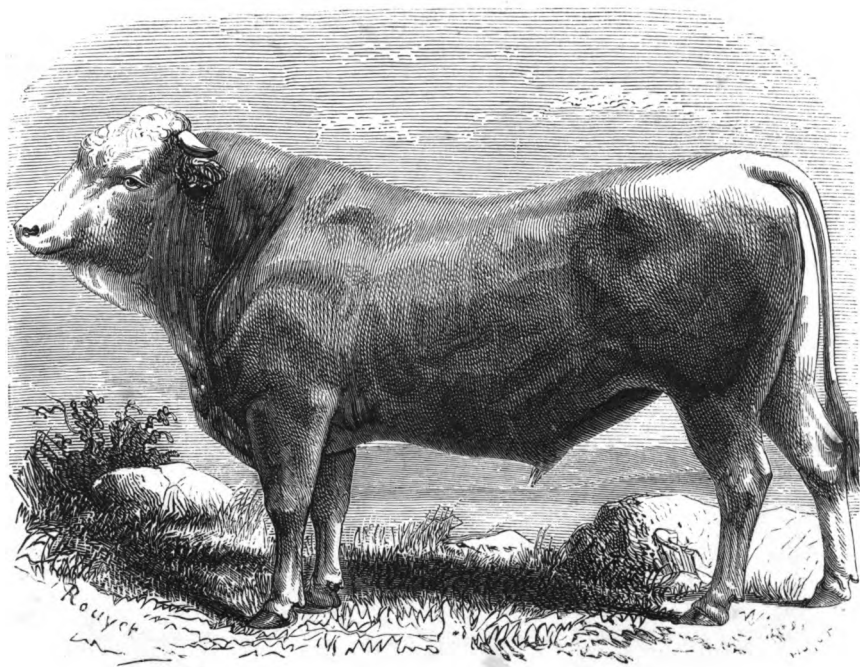


Fig. 70. — Taureau du Glane (page 495).



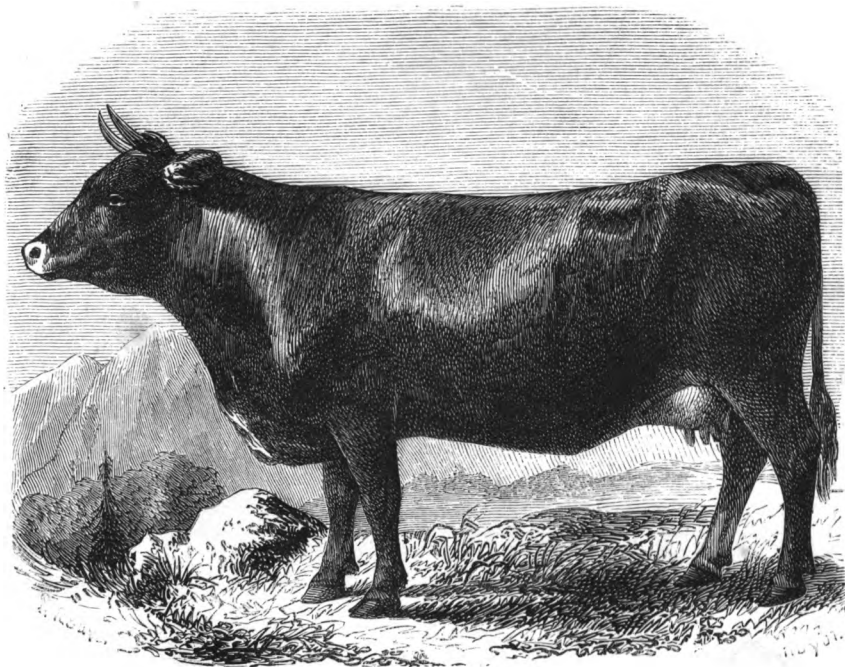
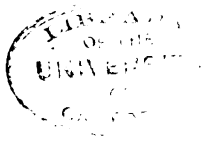


Fig. 71. — Vache de race Schwitz (page 501).



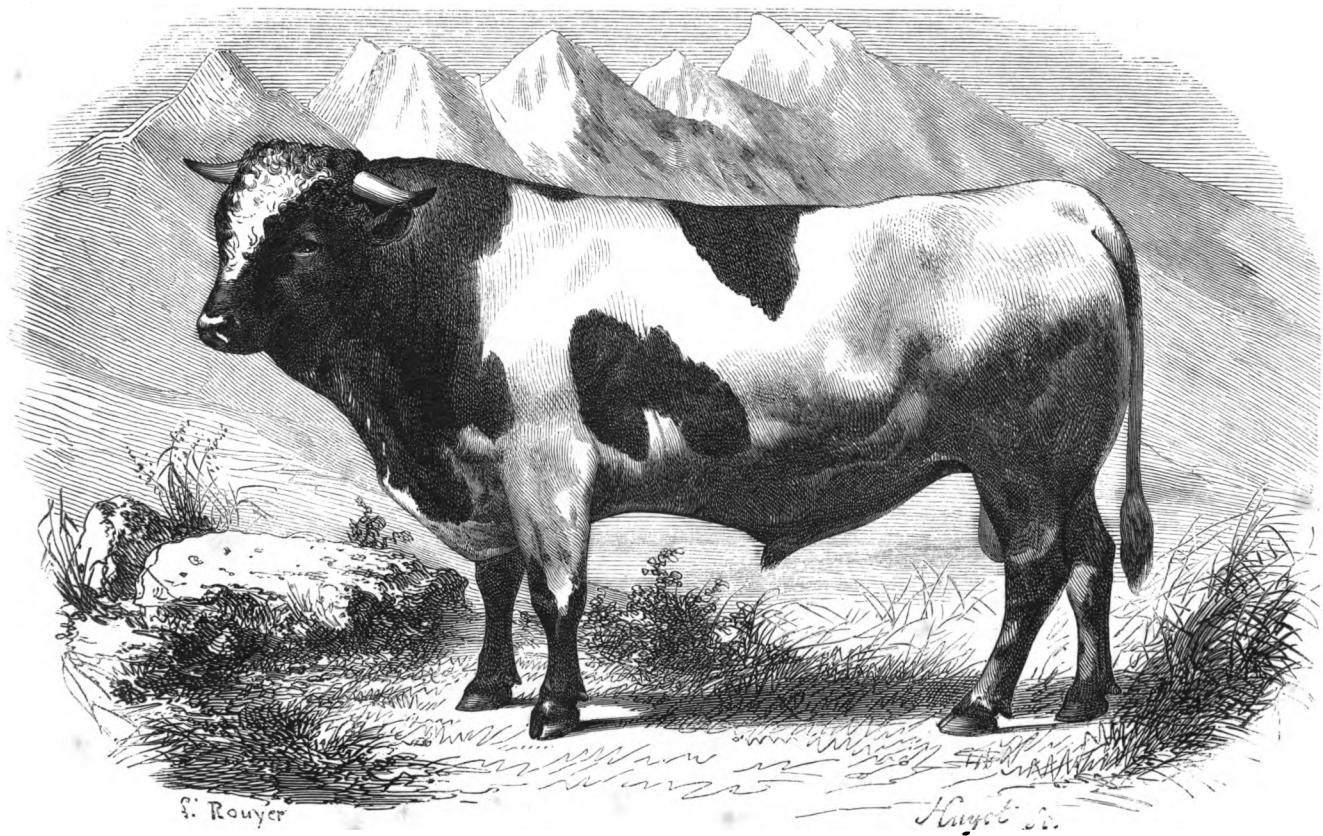


Fig. 72. — Taureau de race fribourgeoise (page 503).





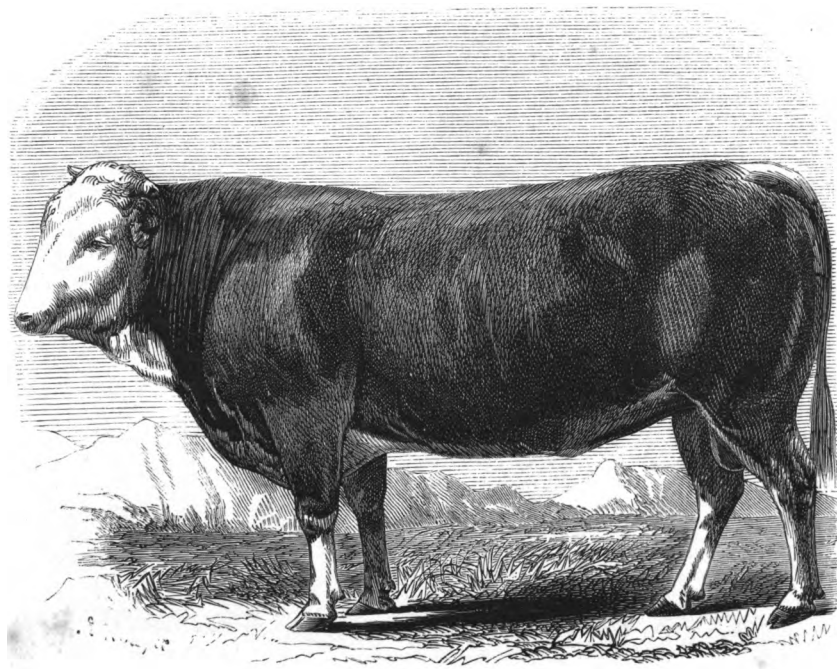


Fig. 73. — Taureau de Simmental (page 504).



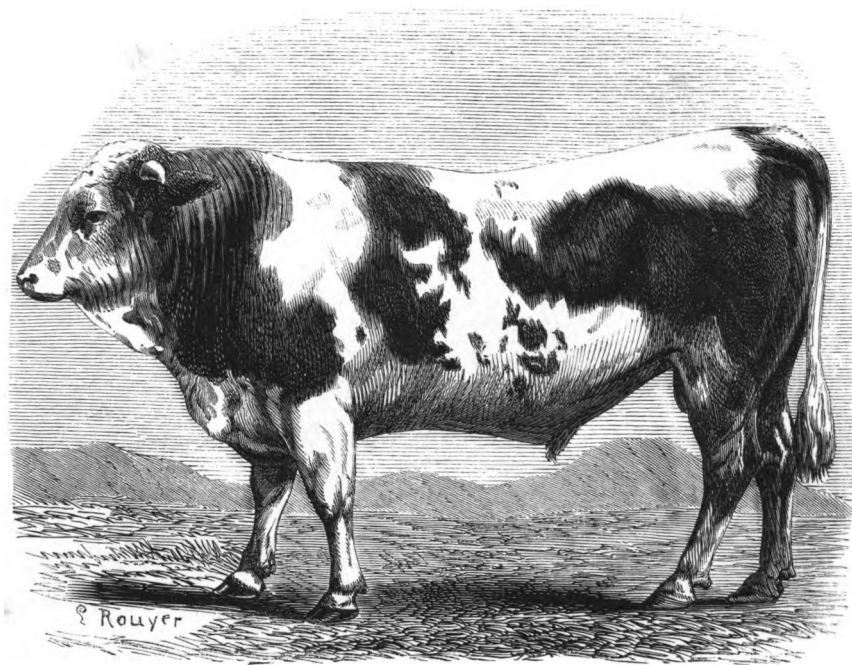


Fig. 74. — Taureau de race bernoise (p. 511).



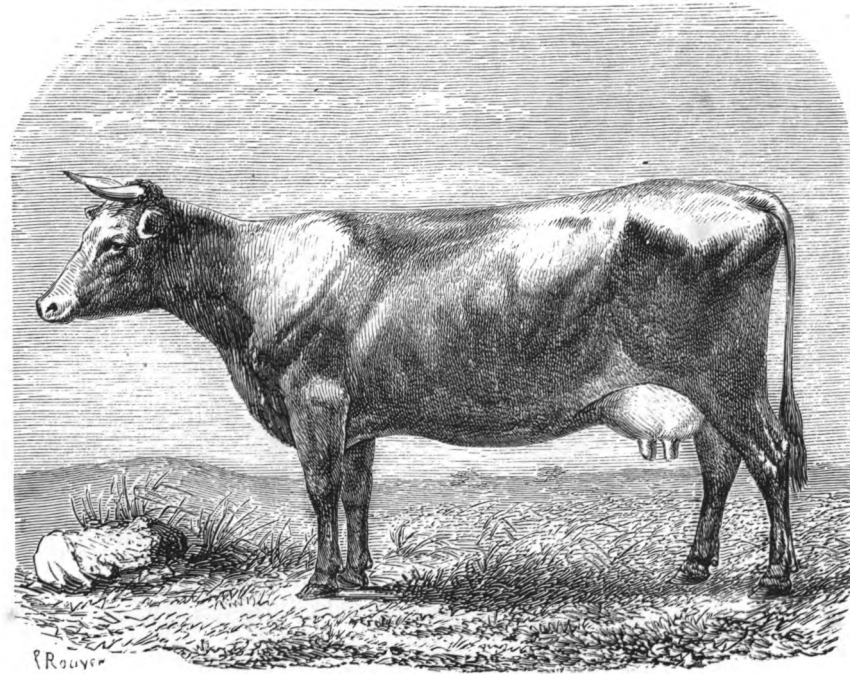


Fig. 75. — Vache d'Angeln (page 535).



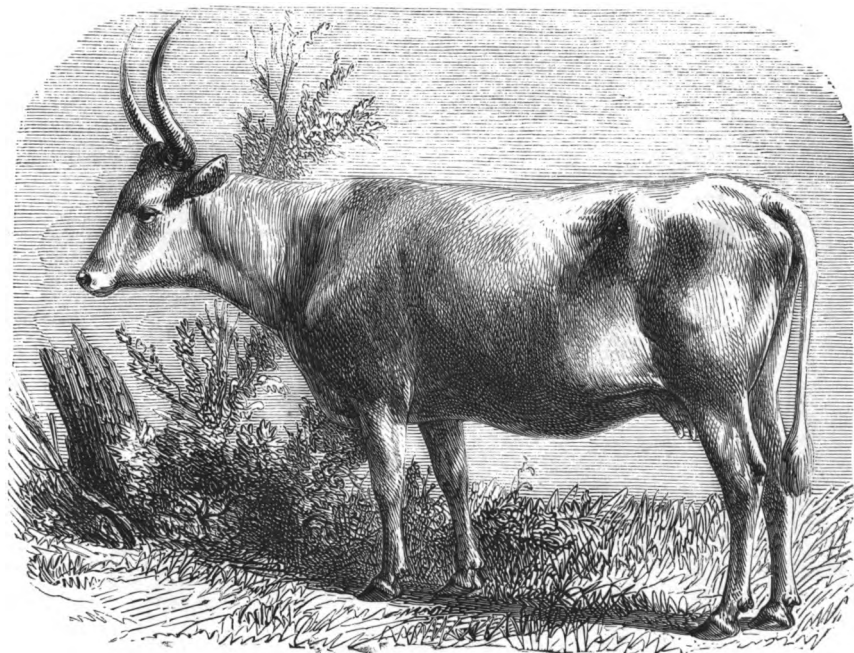


Fig. 76. — Vache de race hongroise (page 540).





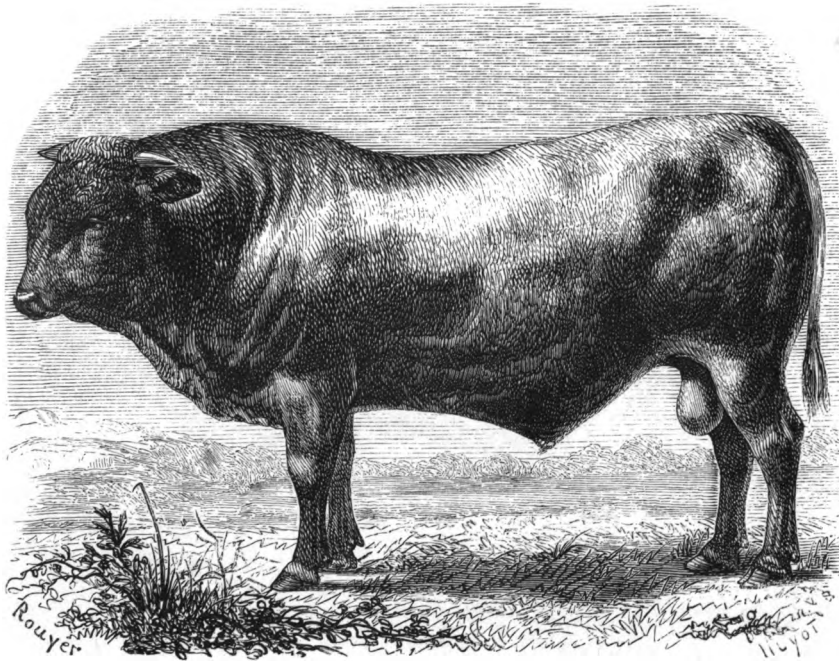


Fig. 77. — Taureau de la race de Dux (page 546).



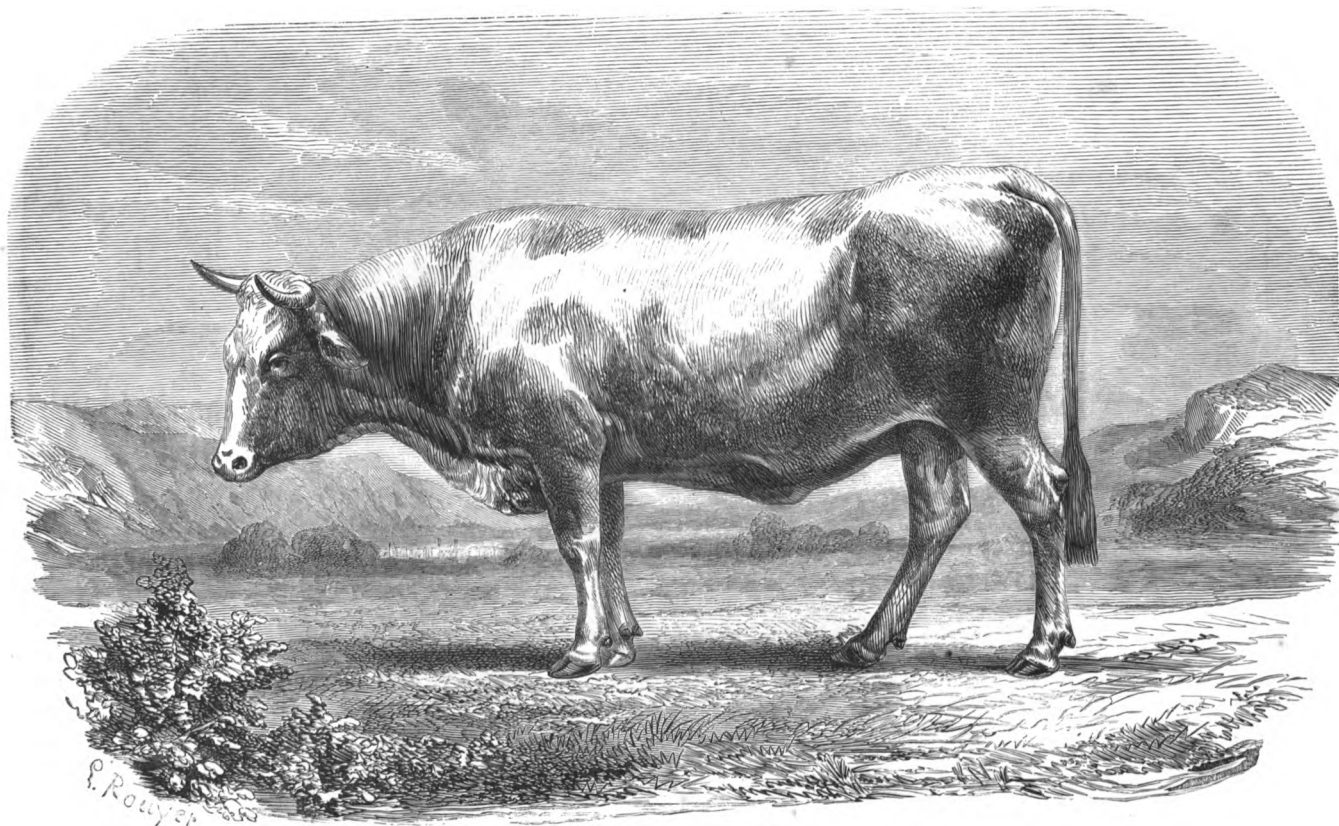


Fig. 78. — Vache de Mariaof (page 551).



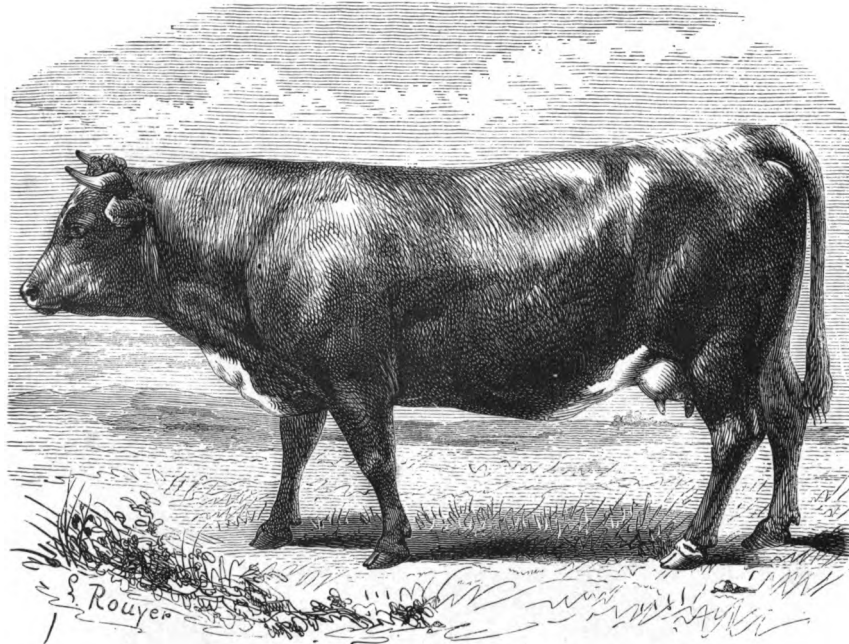


Fig. 79. — Vache de la race de Pinzgau (page 558).



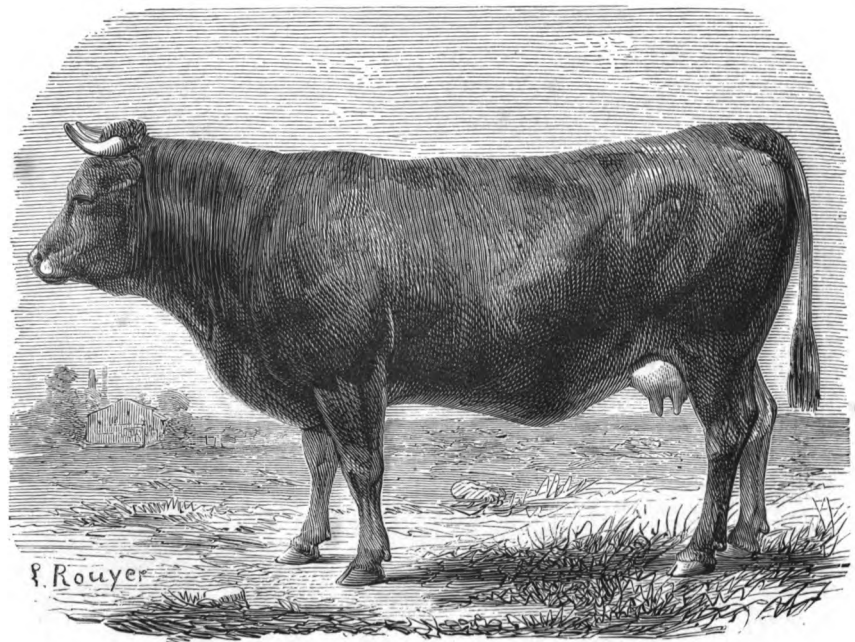


Fig. 80. — Vache de la race de Zillertal (page 562).

LIBRARY  
OF  
UNIVERSITY  
OF  
CALIFORNIA



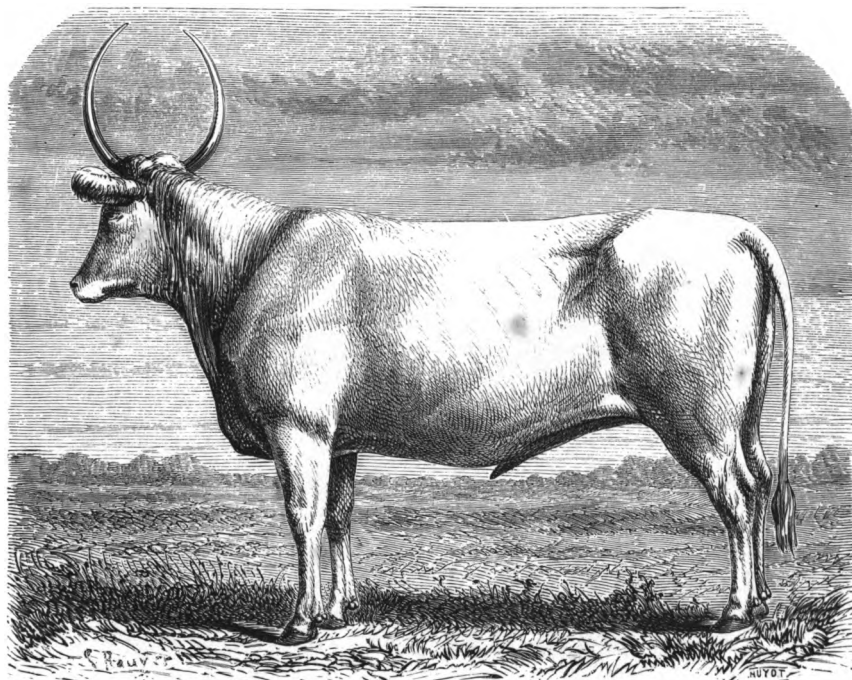


Fig. 81. — Bœuf de Crimée, race des steppes de la Russie (page 577).



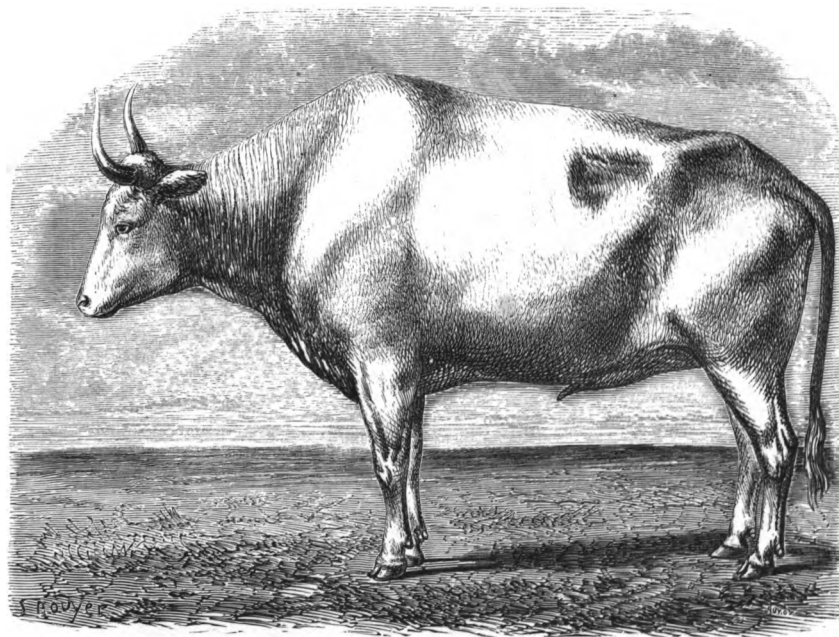


Fig. 82. — Bœuf de race podolienne (page 577).



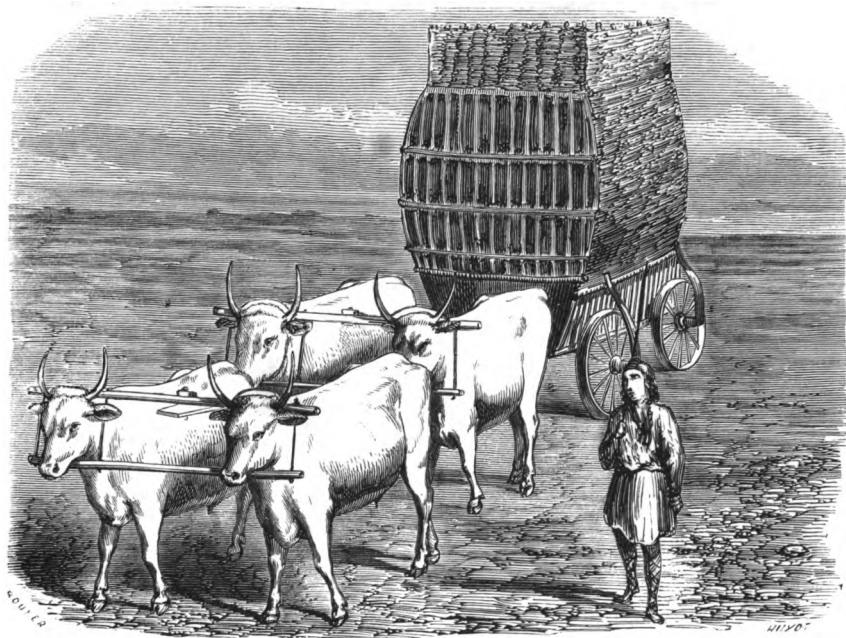


Fig. 83. — Attelage de bœufs moldaves (page 578.)