

To Martin, with my best wishes,
Gordon

Charles Darwin's *Beagle* Collections in the Oxford University Museum

By GORDON CHANCELLOR,

City Museum & Art Gallery,
Priestgate, Peterborough
PE1 1LF

ANGELO DiMAURO,

Department of Biology,
University of Connecticut,
Torrington Campus,
Torrington Connecticut 06790, USA

RAY INGLE,

Department of Zoology,
British Museum (Natural
History), Cromwell Road,
London SW7 5BD

GILLIAN KING,

Oxford University Museum,
Parks Road,
Oxford OX1 3PW.

SUMMARY

One hundred and ten numbered lots of zoological specimens and several specimens of rocks collected by Charles Darwin during the second voyage of H.M.S. *Beagle* (1831-1836) are contained in the collections of the Oxford University Museum. The circumstances which led to their acquisition are outlined. Most of this material comprises "higher" crustaceans but a few other invertebrate groups are also represented. A systematic identification has been made of these specimens and their condition is briefly described.

INTRODUCTION

Following the return of H.M.S. *Beagle* from her second hydrographic commission in October 1836, much of the zoological material collected on the voyage by Charles Darwin was subsequently entrusted for scientific description to Thomas Bell (1792-1880). In 1862 Bell's zoological collections (including invertebrates sent to him by Darwin) were purchased by John Obadiah Westwood (1805-1893), the first Hope Professor of Zoology at Oxford University, to enrich the Hope Entomological Collection in his care. In 1889 a greater part of this Bell Collection was transferred to the Oxford University Museum's Zoological Collections (Davies & Hull, 1976).

In 1936 some *Beagle* specimens were sent by G. D. Hale Carpenter (Hope Professor of Zoology (Entomology) from 1922 to 1948) to W. T. Calman of the British Museum (Natural History) for examination. We must presume that this material was returned to Oxford, although there is no record in the Hope Department loan catalogue of the transaction and the only documentation of its having occurred is a

letter from Carpenter to Dr Isabella Gordon of the British Museum (Natural History) dated 1945 asking her to look for the material sent to Calman. In 1962 and 1975 further zoological specimens were transferred from the Hope Collections to the Zoological Collections of the Oxford University Museum, and studies of these collections since 1976 have revealed that they contain many of the crustaceans described by Bell, including type specimens, many of which were thought to have been lost (see Di Mauro, 1982). It has been possible to establish that 110 numbered lots of these specimens originated from the *Beagle* collections. These have been identified by us as far as it has been possible from current literature (see p. 201), and they have been correlated with Darwin's own lists of collections and other notes kept by him from the *Beagle* voyage.

In addition to the material mentioned above, there are a number of insects in the Hope Entomological Collections (mainly from Australia) labelled "C. Darwin" in his own handwriting which are also part of the *Beagle* collections. The acquisition of this material is explained by Poulton (1909: 202-3) and formed the subject of the paper on Darwin's insect collection by K. G. V. Smith (1987).

Finally, we have identified several specimens of rocks collected by Darwin during the *Beagle* voyage and now in the Geological Collections of the Oxford University Museum. These Darwin specimens form part of the Charles Daubeny (1795-1867) collection (see Gunther, 1904:188; 1925:244). These rocks, all labelled in Darwin's handwriting, comprise two specimens (Darwin's dry specimen catalogue numbers 2248 and 2256) labelled "Andesitic trachyte. Baths of Cauquenes, described p. 175 in my Geolog. Observ. on S. America . . ." collected in September 1834; two specimens labelled "Andesitic syenite; larger specimen from T. del Fuego; smaller one, Cordillera of Chile . . ." (the latter bears the corner of one of Darwin's green printed number labels); two specimens of obsidian labelled "From St. Helena" (these would have been numbered between 3700 and 3728); two pieces of fossil wood, one labelled "Van Diemen's Land. Lower part of the tree", the other "Peru. Petrified wood".

There may be other Darwin specimens in the Daubeny collection, notwithstanding that the *Beagle* rock collection in the Mineralogy and the Petrology Museum in Cambridge is almost complete, but since Darwin's name appears nowhere else in Daubeny's manuscript catalogue to his collection, such specimens will be discovered only when Darwin's numbers or handwriting are recognised.

PRESENT STATE OF THE COLLECTION

The Darwin zoological material discussed here comprises chiefly crustaceans and a few other invertebrates. Some of these specimens are preserved dry whereas others are in alcohol, but it is clear from Darwin's notes that originally all the material was preserved in spirits. The dry specimens are stored in cabinet drawers containing the Bell collection and comprise mainly brachyuran crabs filling two drawers, one of which is shown in Figure 1. There are three additional specimens among other non-Darwin material in three other drawers. Several dry specimens are associated with labels in Darwin's handwriting and/or still bear the metal tags with which he numbered them while on the *Beagle*. Other specimens are labelled in Bell's handwriting and bear his manuscript names (i.e. 'darwinii' or 'darwinii n. sp.');

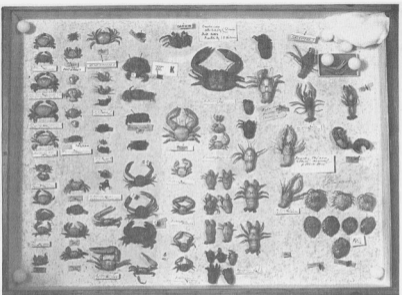


Figure 1. A drawer from the Bell cabinet containing *Beagle* crustaceans and showing the present condition of this dry material.

are visible in Figure 1. Six specimens are associated with brown paper labels (in addition to a metal tag) bearing a specimen number in a handwriting which appears to be that of Darwin's servant and amanuensis, Syms Covington. The spirit material is now all contained in special 'Darwin' jars (see below) (jars 1-9 for the Crustacea, with separate jars for Myriapoda, Arachnida and Annelida respectively); the specimens are individually numbered in small tubes except for a few large specimens in their own jars. Most of this spirit material can be clearly recognised as *Beagle* specimens. Unfortunately there remain many specimens, dry and in spirit, which are probably part of the *Beagle* collection but which bear no number or label of any sort and are therefore not included in this paper.

HISTORICAL BACKGROUND

In recent years there has been a growth of interest in Darwin's *Beagle* collections and the present whereabouts of most of these collections have been established (see Porter, 1985, for an authoritative overview). The bulk of the animals, plants, rocks and fossils which Darwin collected was well cared for when it reached England and, by the standards of many early nineteenth century voyages of discovery, Darwin was well served by the mineralogists, palaeontologists, botanists and zoologists he recruited to describe those specimens which he did not wish to deal with himself, such as the barnacles and arrow worms. One of the few groups of animals from the voyage never properly described was the Crustacea Darwin had entrusted to Thomas Bell (an acknowledged expert on the group) for inclusion in a projected complete *Zoology of the Beagle*. In the event, only the vertebrates from the voyage were described, of which Bell dealt with the reptiles (see Bell, 1842-43), while the Crustacea sank into oblivion.

It is clear that all the specimens given to Bell were originally preserved in spirits by Darwin, and nearly all the extant specimens have numbers that agree with those listed in the "Catalogue for specimens in spirits of wine" (referred to hereafter as the "Catalogue") and which is today displayed in Down House, Darwin's home in Kent. This "Catalogue" comprises three red pocket notebooks with soft covers and was briefly described by Barlow (1945:265). It is a chronological listing of specimens collected throughout the voyage and the numbers are divided as follows: 1-660 (first notebook), 661-1346 (second notebook), 1347-1529 (third notebook with this last number representing the last specimen entry).

All the crustaceans listed in this "Catalogue" are marked in pencil with a letter "C" (Herbert, 1974); this was to enable Syms Covington (see above) to copy out a separate list to accompany the Crustacea collection for the use of the zoologist who intended to study the collection. Our attempts to locate this list have been unsuccessful. It is possible that Covington never prepared the list of Crustacea before he departed for Australia in 1839 but this seems unlikely if the majority of the lists were prepared on the *Beagle* before she reached England.

There are about 230 lots marked with a "C" in the "Catalogue" but we have only succeeded in identifying 110 of these lots in the Oxford University Museum collections, so that it would appear that much material still remains to be discovered. In this paper, with a very few exceptions, only the 110 lots we have identified are

listed, so that for a complete list of Darwin's *Beagle* Crustacea the reader must consult Darwin's original "Catalogue".

Another source of information concerning Darwin's zoological collections is the manuscript "Diary of observations on zoology of the places visited during the voyage (of H.M.S. *Beagle*)", referred to in this paper as the "Zoology Diary" which Darwin wrote concurrently with his more general "Personal Diary" of day-to-day affairs (see Barlow, 1933; Porter, 1985). The "Zoology Diary" is today in the Darwin archive at Cambridge University Library. With the kind assistance of Mr Peter Gautrey it has been possible to examine it and abstract all data relevant to the Oxford University Museum specimens. Since this "Zoology Diary" was used by Darwin in the writing of his official *Journal of Researches* (first published in 1839) some of its contents are of particular interest. Occasional cross-references to the "Zoology Diary" occur in the "Catalogue"; these are given, for example, as "V. 19(b)" (i.e. *vide* page 19, note (b)). The text of the "Zoology Diary" today comprises four bound volumes, DAR 30(i); DAR 30(ii); DAR 31(i); DAR 31(ii); although Darwin's illustrations and index are bound in DAR 29(iii). (See *Handlist of Darwin Papers at the University Library Cambridge*, 1960. p. 10)

There are two references to Crustacea in a manuscript entitled "Notes on the preservation of specimens", which is bound as the last part of DAR 29(iii) in the Cambridge University Library. These references read as follows: "Not to keep Crustacea with other things owing to the black tinge they give to the spirits". "Crustacea ought to have proof spirits and the Brachyuri well emptied of water & incision in the abdomen". This manuscript would appear to have been written by Darwin before the *Beagle* set sail, as instructions to himself on how to preserve the specimens he intended to collect.

Finally, a manuscript catalogue compiled by Thomas Bell and in the Hope Library contains Darwinian "Catalogue" numbers entered against Bell's own numbers along with tentative generic identifications.

INTERPRETATION OF THE "CATALOGUE" AND REAPPRAISAL OF THE BEAGLE SPECIMENS

Darwin's "Catalogue" is written in ink, except for entries 1474 to 1529 which are in pencil (see Herbert, 1974:239). Information is inscribed on each right-hand page of the notebook. At the top of each page appears (nearly always) the date and locality followed by a vertically arranged sequence of numbers and tentative identifications with occasional further information. Sometimes several localities are given below the main entry at the page heading, and occasionally additional information appears on the left-hand page opposite the main right-hand entry. These additional comments are merged with the main entries in the list of *Beagle* specimens given here (pp 202-226), although enclosed within square brackets. Since these comments were numbered by Darwin, they can be tied unambiguously to, and were almost certainly written at the same time as, the main entries.

A taxonomic reappraisal of the *Beagle* specimens has been made with the help of study reference collections in the British Museum (Natural History) and the following literature: Abele (1972), Barnard (1950), Bollman (1889), Bott (1969, 1973), Bousfield (1982), Campbell & Griffin (1966), Chace (1956, 1968), Crane (1975), Fize & Serene

(1955), Forest & Saint Laurent (1967), Garth (1946, 1958), Haig (1955, 1960, 1964), Holthuis (1952, 1954), Lucas (1980), Manning (1969, 1971), Manning & Holthuis (1981), Menzies (1961), van Name (1936), Pretzmann (1972), Rathbun (1911, 1918, 1925, 1930, 1937), Sakai (1976), Schmitt (1942), Stebbing (1914), Stephenson & Hudson (1957).

The following entry (taken from page 227) of this *Beagle* specimen list is given as an interpretive example of the format used. All editorial matter is indented, or italicized within brackets if it interrupts the "Catalogue" text.

1833 March Tierra del Fuego ----- top of page entry in "Catalogue"

551 Sphaeromidae from stones & a Crust. "Catalogue" number and Darwin's
Macrouri. from stomach of a Gadus identification
G[ood] S[uccess] Bay
----- current editorial comment (in this
instance to explain abbreviated locality)

6/12924 ----- Oxford University Museum registration
number

Decapoda: Galatheidæ ----- order and family names

Munida subrugosa (White) ----- generic name, specific name, author of
species

Remarks: relate to the present condition of specimens and relevant information.

In interpreting Darwin's notes it is useful to know that he took his names for colours from Patrick Syme's edition of *Werner's nomenclature of colours* (Edinburgh, 1821) and that he also had available on the *Beagle* Jean Baptiste Bory de Saint-Vincent's edition of the seventeen volume *Dictionnaire classique d'histoire naturelle* (Paris, 1822-1831) (see under specimen 1098). Darwin also refers (under specimen 1057) to Juan Ignacio Molina's *Compendio de la historia geografica natural y civil del Reyno de Chile . . .* (Madrid, 1794-1795). A complete list of the books available to Darwin on board the *Beagle* is provided in an appendix to Burkhardt & Smith (1985).

LIST OF *BEAGLE* SPECIMENS

January 1832 Cape Verdes

12 Jan. 17 & 18.: 5 small Crustacea from Quail island

4/12897

Decapoda: Paguridae

Clibanarius sp.

Remarks: fragmented.

4/12898

Decapoda: Xanthidae

Epixanthus helleri A.Milne Edwards

4/12899

Decapoda: Majidae

Micropisa ? *ovata* Stimpson

4/12899

Decapoda: Majidae

? *Herbstia* sp.

Remarks: condition poor.

4/12900

Decapoda: Porcellanidae

Petrolisthes ? *cessacii* (A. Milne Edwards)

Remarks: condition very poor.

[Jan. 22nd]

40 Centipedes Arachnida. NE of Port Praya

4/12901-2

Isopoda: Idoteidae

? *Idotea* sp.

59 Containing Crustacea, Echiura, Siphunculus & white animal allied to it: Actinea.

Fisurella. Chiton. W of Quail Island

Dry 2/14516

Decapoda: Calappidae

Cycloes bairdii Stimpson

Remarks: this may be a new record for the Cape Verde Islands. Chace (1968) gives the range as St Helena and the S. Atlantic. The specimen was labelled by Bell "Cycloes, Cy: Darwinii B. Darwin 59".

91 Crustacea. Chiton. Bulla [*Doris deleted?*] (see 1477)

1832 St Jago to Fernando Noronha

108 Porpita. v. 19(b) Crustacea [*Biphora deleted?*] Salpa

4/12903

Amphipoda: Gammaridea

Remarks: condition poor.

March

[144,145,146,148,150,151,152,153 Caught at Bahia from Feb 29th to March 17th—]

144 Crab

4/12904

Decapoda: Grapsidae

Sesarma (Holometopus) angustipes Dana

145 Shells. Crustacea & Fish

4/12905

Decapoda: Majidae

Mithrax (Mithraculus) coryphe (Herbst)

4/12906

Decapoda: Xanthidae

Remarks: condition too poor to allow further identification.

4/12907

Isopoda: Valvifera

Remarks: condition very poor but telson distinctive.

[160. . . 177 Abrohlos. March 29th]

172 Crustacea

4/12908

Decapoda: Dromiidae

Dromidea antillensis Stimpson

4/12909

Decapoda: Dorippidae

Ethusa sp.

Remarks: condition poor.

1832 May. Rio de Janeiro

206 Julus (May 5th)

Myriapod jar/12910

Diplopoda: Spirostreptidae

Remarks: fragmented.

222 Salt Water Crab: Julus: Lepisma: Worms. Wood lice. Acari

Dry 105/14517

Decapoda: Portunidae

Ovalipes punctatus (de Haan)

Remarks: the metal tag numbered 223 with this specimen is anomalous since 223 is not listed as a crustacean in the "Catalogue".

1832 Monte Video: August

347 Fish. Coast of Patagonia Latitude 38° 20' August 26th—Soundings 14 fathoms.

Caught by hook & Line V. 77.

Remarks: the fish referred to is *Percophis brasiliensis* Cuvier described by Jenyns (1840-1842:23). This fish was "caught by hook and line in fourteen fathoms water on the coast of Patagonia, in lat. 38° 20'" and was noted by Darwin as "when cooked, was good eating". This specimen is no longer in the Zoological Museum Cambridge and is presumably not extant.

351 Isopod (Bopyrus ?) on fish: & [curious Decapod *deleted*: Porcellana *inserted*]. can swim tail first: & Amphipode &c: [Habitats on Corallina, same as (347) *deleted in pencil*: 14 fathoms coast of Patagonia *inserted in pencil*].

4/12911

Decapoda: Porcellanidae

Petrolisthes sp.

Remarks: condition very poor.

4/12912

Isopoda: Cirolanidae

Cirolana ? urostylis Menzies

1832 Sept: Bahia Blanca

407 Pagurus in a Buccinum

- Dry 16/14518
Decapoda: Majidae
Mithrax (Mithraculus) nodosus Bell
Remarks: this specimen appears to have been misnumbered as it is clearly a spider crab and not a pagurid. This species occurs on the Pacific side of S. America far removed from the Argentine locality of 407.
- 414 Plagusia: body pale.
4/12913
Decapoda: Grapsidae
Cyrtograpsus altimanus Rathbun
- 436 Plagusia (two species)
Separate jar/12914
Decapoda: Grapsidae
Cyrtograpsus angulatus Dana
- 1832
Octob: Bahia Blanca
- 448 Small Crustacea, from Coralline &c i.e. not pelagic.—
4/12915
Isopoda: Idoteidae
Idotea ? metallica Bosc
Remarks: condition rather poor.
- 4/12916
Isopoda: Idoteidae
Idotea ? metallica Bosc
- 4/12917
Isopoda: Idoteidae
- 4/12918
Isopoda: Idoteidae
Remarks: condition poor, only anterior half present.
- 4/12919
Amphipoda: Caprellidae
Remarks: condition poor.
- 6/12920
Amphipoda: Isaeidae
?Megamphopus sp.
Remarks: condition poor.
- 6/12921
Amphipoda: ?Aoridae
Remarks: condition poor.
- 1832 November. & Dec. Monte Video
- 475 Polydesmus, dusky red: & Scutigera: found in ship (British?).
Myriapod jar/12922
Diplopoda: Polydesmidea
Remarks: badly broken.

1832 Dec:

- 491 Crust. Mac V. 98(b) (its young ?) & Crust. Amphipus-off San Blas. Dec. 4th:
 Remarks: there are long descriptions of entry 491 and of other Crustacea collected on Dec. 4th, in DAR 30 (ii). The following entry appears in Darwin's "Personal Diary" for December 5th-6th while at sea off Patagonia. "During these two delightful days we have been gliding onwards: but at a slow pace. I have been employed in examining some small Crustacea; most of which are not only of new genera, but very extraordinary ones" (see Barlow, 1933). The crustaceans mentioned are probably those described in Darwin's *Journal* on page 189 (see Darwin, 1839; Burkhardt & Smith, 1985: 307).

1/9854

Amphipoda: Gammaridea

Remarks: condition very poor.

2/11955

Mysidacea: Mysida

Remarks: fragmentary.

1832 Dec. 20th Good Success Bay:

- 507 Crust: (Sphaeromidae) very fine on Fucus. Hermit Island

1/9852

Amphipoda: Gammaridea

Remarks: condition poor.

2/11939

Amphipoda: Gammaridea

Remarks: several specimens in one tube with one reference number.

? *Dryopoides* sp.

Kuria sp., several reasonably good specimens. Gammarideans—one single damaged and one very small specimen.

2/11949

Isopoda: Sphaeromidae

Cassidinopsis emarginata (Guérin-Méneville)*Exosphaeroma* ? *lanceolata* (White)*Amphoroidea* *tyra* H. Milne Edwards? *Dynamenella* sp.

Remarks: assorted genera all in one tube, the ?*Dynamenella* and ?*Exosphaeroma* specimens are damaged.

1/9893

Isopoda: Sphaeromidae

Amphoroidea *tyra* H. Milne Edwards

- 510 Pagurus. Goree Sound

6/12923

Decapoda: Paguridae

Pagurus comptus White

Remarks: two fragments only.

1833 March Tierra del Fuego

551 Sphaeromida from stones & a Crust. Macrouri. from stomach of a Gadus.—

G[ood] S[uccess] Bay

6/12924

Decapoda: Galatheidæ

Munida subrugosa (White)

6/12925

Isopoda: Sphaeromidæ

Exosphaeroma gigas (Leach)

1833 March Falkland Islands

556 Lithobius: [*Gonoleptes deleted*]: Arachnida: Oniscus. Lumbricus: Falkland Islands

Remarks: there is a dry amphipod (Dry 90) in the collection which is not associated with any Darwin number, but which is pinned to a small paper label inscribed "East Falkland" in Darwin's handwriting. We have identified this as Amphipoda: Paramphithoidæ.

2/11951

Isopoda: Sphaeromidæ

Cassidinopsis emarginata (Guérin-Méneville)

560 Sphaeromida & genus closely allied to *Atylus*; all under stones: Falkland Isd:

1/9889

Isopoda: Sphaeromidæ

Exosphaeroma lanceolata (White)

1/9850

Isopoda: Sphaeromidæ

Exosphaeroma studei Vanhóffen

1/9856

Amphipoda: Eusiridæ

Bovallia ? regis Stebbing

589 Crustacea: crawling on Corallines; The long one is of a very curious structure;—

6/12926

Tanaidacea

Remarks: condition rather poor.

6/12927

Amphipoda: Eusiridæ

?*Pontogeneia* sp.

6/12928

Isopoda: Sphaeromidæ

Isocladus calcarea (Dana)

1833 E. Falkland Isd:

601 Cancer.

Dry 96/14519

Decapoda: Atelecyclidæ

Peltarion spinulosum (White)

Remarks: there is a large brown paper label associated with this specimen with the number "601" inscribed in Covington's handwriting. Another specimen of this species is represented in the Bell collection labelled "Tierra del Fuego 72" but which does not obviously belong to any *Beagle* material collected from that region.

603 2 Macrouri. Amphipoda. Sphaeroma.

6/12929

Decapoda: Paguridae

Pagurus comptus White

Remarks: condition poor, hind-end damaged.

6/12932

Amphipoda: Ampithoidae

Ampithoe ? brevipes (Dana)

Remarks: conditions rather poor.

6/12930

Isopoda: Sphaeromidae

Exosphaeroma lanceolata (White)

6/12931

Decapoda: Caridea

Remarks: condition poor.

1833 May Maldonado

611 Fresh W Crust. Amphipod.—colour coppery & metallic lustre.

1/9881

Amphipoda: Gammaridae

617 Lithobius & Julus. Sierra las Animas

Myriapod jar/12933

Chilopoda: Scolopendromorpha

Myriapod jar/12934

Diplopoda: Chilognatha

Remarks: broken, only females present.

622 Oniscus. Lithobius. Scolopendra. rocky hills.—

6/12935

Isopoda: Sphaeromidae

Isocladus calcarea (Dana)

Remarks: very poor condition.

Myriapod jar/12936

Chilopoda: Scolopendromorpha

1833 June. Maldonado

667 Julus (2 species) Lithobius

Myriapod jar/12937

Diplopoda: Chilognatha

Remarks: condition very poor.

737 Crab, caught in dry hole in one of the low islands of the R. Parana. above Rosario:—

Dry 26/14521

Decapoda: Trichodactylidae

Dilocarcinus (Dilocarcinus) pagei cristatus Bott

753 Crustacea, inhabiting the above [mouth of R. Negro Coral *inserted in pencil*]

1/9848

Amphipoda: Caprellidae

?*Caprella* sp.

1834 Jan: 8th:—

782 Various marine productions. 4 or 5 miles from shore; 19 fathoms; Lat. 48° 56'.

786 Crustacea found with (782)

Arachnid jar/12940

Pycnogonida

6/12938

Isopoda: Sphaeromidae

Isocladus sp.

6/12939

Decapoda: Hymenosomatidae

Halicarcinus planatus (Fabricius)

Remarks: specimen very small.

1834 Jan:

800 Crust. sea beach. [P. Desire]

6/12941

Isopoda: Sphaeromidae

Exosphaeroma sp.

6/12942

Isopoda: Idoteidae

Edotea sp.

801 Crustacea, pelagic. Watchmen Cape L. 48° .18'. [Caught at night. could not catch any by day. under similar circumstances: small white Entom. [numerous *inserted*] creeping (?). Small white Ento: with long antennae very numerous at night Lat 51°. 53' Long 68° 11'.—]

6/12943

Amphipoda: Gammaridea

Remarks: headless and breaking up.

6/12944

Cumacea: Diastylidae

Diastylis sp.

802 Crust. Isopoda.—I believe certainly was on the body of a large dog fish. colour above. mottled greenish grey & tile red, edge [dark brown *inserted*]. [Same locality as last.—]

7/12945
Isopoda: Cirolanidae
? *Cirolana* sp.

1834 Jan: Sts. Magellan.—

810 3 Crustacea; Amphipod, with three spines, mottled pink & white; Hab:
[St Gregory's Bay. Sts of Magellan 15 fathoms.]

7/12946
Amphipoda: Eusiridae
? *Bovallia* sp.
Remarks: condition poor.

7/12947
Amphipoda: Caprellidae
Remarks: condition poor.

814 Crab. white "above tile red" with pimples of "art. blood do." eggs color of
yoke of egg.—[Near Elizabeth. 5 fathoms.]

Dry 99/14522
Decapoda: Lithodidae
Paralomis granulosa (Jacquinot)
Remarks: Elizabeth Island is in the Straits of Magellan. The specimen is associated
with a brown paper label in Covington's hand and inscribed "814 Spirits".

815 Crab. mud colour: eggs bright "scarlet red". [Near Elizabeth. 5 fathoms.]

Dry 100/14523
Decapoda: Majidae
Eurypodius latreillei Guérin-Méneville

820 Crab. Macr. [Port Famine]

Dry 104/14524
Decapoda: Galatheidae
Munida subrugosa (White)
Remarks: see Barlow (1965: 231–2, 250) for transcriptions of DAR 29 (ii). MS
pp 30, 32, 56 which refer to Crustacea in the stomachs of birds. This specimen
(820) is specifically referred to as from the much distended stomach of a "Puffinus".

822 Crustacea. Cape Negro

Annelida Jar/12948
Polychaeta: ? Amphinomidae
Remarks: condition rather poor.

1834 Port Famine

830 Crab, black "brownish orange with purple," legs. mottled "orpiment orange"

Dry 108/14525
Decapoda: Majidae
Eurypodius latreillei Guérin-Méneville

833 Crust: Schizopod. St Sebastian Bay. *Vast* numbers. 12 Fathoms snow white
except black eyes. [Caught at night:—Here there were very many Whales:—5 miles
out at sea.—]

834 Crustacea. S of C. Penas. 11 fathoms. 3 miles out at sea; caught at night.
 [Largest & most abundant specimen color [pale *deleted*] red. like half-boiled crab;
excessively numerous: (833) & 2nd sized amphipod (with dark blue eyes & back) also
 very numerous.]

7/12949

Amphipoda: Hyperiidæ

Parathemisto sp.

7/12950

Mysidacea: Mysida

Remarks: fragments only.

1834 Feb: T. del Fuego

837 Crustacea, 13 Fath. 2 miles from shore, caught at night.—Cape Ines. Feb. 19th.—

839 Crust.—some miles to South of (837) under similar circumstances. (ship at
 anchor at night). [The Amphipod (largest & most specimen) *excessively* numerous.
 in different places, different sorts appear predominant.—Viz this species here.—
 a Shizopod (?) near St Sebastian (833.834) & other at C. Penas.]

2/11952

Amphipoda: Hyperiidæ

Parathemisto sp.

1/9875

Decapoda: Galatheidæ

Munida gregaria (Fabricius)

841 Crust: one mile from shore, caught by night. East of Wollaston Isd.

7/12952

Amphipoda: Aoridae

Lembos ? *fuégiensis* (Dana)

Remarks: condition poor.

7/12953

Amphipoda: ? Hyperiidæ

Remarks: very small and fragile.

7/12954

Amphipoda: Hyperiidæ

Parathemisto sp.

Remarks: condition poor.

7/12951

Isopoda: Sphaeromidae

Dynamenella ? *eatoni* (Miers)

842 Crust. on Corallines. low water mark on Corallines. Wollaston Isd.

Arachnid Jar/9858

Pycnogonida: Nymphonidae

?*Nymphon* sp.

1/9844

Amphipoda: Gammaridea

Remarks: condition poor.

1834 Feb: Tierra del Fuego

850 Crust: 1 mile from shore: 16 F[athoms] caught at night, NE end of Navarin Isd.
[Is the small & most numerous specimen with rudimentary legs the young of (834).]

1/9846

Copepoda: Calanoida (2 specimens)

Mysidacea (1 specimen)

Stomatopoda (pseudozoe larva, 1 specimen)

Decapoda (larvae, several specimens)

2/11960

Decapoda: Galatheidae

?*Munida* sp.

Remarks: condition rather poor.

851 Crust: from sea-weed &c at bottom. 16 Fathoms. NE end of Navarin Isd.

Arachnid jar/12960

Pycnogonida: Pycnogonidae

?*Pycnogonum* sp.

7/12958

Decapoda: Caridea

Remarks: condition poor.

7/12955

Decapoda: Hymenosomatidae

Halicarcinus planatus (Fabricius)

7/12956

Isopoda: Sphaeromidae

Isocladus calcarea (Dana)

Remarks: specimens tightly coiled.

7/12959

Amphipoda: Gammaridea

Remarks: small and condition very poor.

860 Crust. Mac. V. 217

7/12961

Decapoda: Hippolytidae

Nauticaris magellanica (A. Milne Edwards)

Remarks: specimen damaged and incomplete. DAR 30 (li) p 217 reads "March 1st. East end of Beagle Channel.—Roots of Fucus. G. Back "Hyacinth & brownish red" with oblong, marks & spots of gem-like "ultra-marine blue", one white transverse mark & longitudinal one on tail; 1st great legs, same colour as body but penultimate limb centre part white edged with "do blue", antipenultimate ringed with white, "do blue" & "do red", other legs with basal limbs faintly ringed, but ultimate limbs orange.—Sides with oblique stripes "reddish brown". Animal most beautiful.—"

1834 March. Tierra del Fuego

867 Crust. Brachy. & Macro. Hab: East end of Beagle Channel

1/9882

Decapoda: Palaemonidae

?*Palaemon* sp.

Remarks: damaged.

Dry 25/14530

Decapoda: Atelecyclidae

Acanthocyclus albatrossis Rathbun

Dry 27-9/14527-9

Decapoda: Hymenosomatidae

Halicarcinus planatus (Fabricius)

Remarks: a manuscript name is attached to the specimen "H. leachii (Male) Darwin 867".

Hymenosoma leachii Guérin-Méneville is a synonym of *Halicarcinus planatus* (Fabricius). See also 917.

Dry 3/14526

Decapoda: Majidae

Mithrax (?*Mithrax*) sp.

868 Crust. Amphi. & Isopod. Hab: do. [i.e. as for 867]

2/11956

Amphipoda: Aoridae

Lembos fuegiensis (Dana)

1/9853

Amphipoda: Talitridae

Transorchestia ?chillensis (H. Milne Edwards)

1/9845

Isopoda: Sphaeromidae

Dynamenella ? eatoni (Miere)

1834. March. E. Falkland Isd.

903 Crab. South Coast of E. Falkland Isd.

Dry 101/14531

Decapoda: Majidae

Eurypodius latreillei Guérin-Méneville

917 Crust: caught as all these marine productions by pulling up roots of kelp.

Dry 32/14534

Decapoda: Hymenosomatidae

Halicarcinus planatus (Fabricius)

Remarks: the specimen bears a label inscribed "H. Leachii (female) Darwin 917"; several legs are missing.

Dry 31/14533

Decapoda: Hymenosomatidae

Halicarcinus planatus (Fabricius)

Remarks: appears to be a juvenile; all legs missing.

Dry 30/14532

Decapoda: Hymenosomatidae

Halicarcinus planatus (Fabricius)

Remarks: specimen bears another label inscribed "E. Falkland I. (female) 175".

The number is probably Bell's.

1/9878

Amphipoda: Acridae

Lembos ? fuegiensis (Dana)

1/9857 & 9877

Amphipoda: Eusiridae

Bovallia ? regis Stebbing

1/9849

Decapoda: Paguridae

Pagurus comptus White

Remarks: only head region represented.

1834 June Port Famine.—

980 Crustacea. Kelp Roots.

7/12964

Amphipoda: Eusiridae

Bovallia ? regis Stebbing

7/12965

Amphipoda: Ampithoidae

?*Ampithoe* sp.

7/12962

Isopoda: Sphaeromidae

Exosphaeroma stuederi Vanhöffen

7/12963

Isopoda: Sphaeromidae

Dynamenella ?eatonii (Miers)

Remarks: fragmentary.

1834 July. Chiloe

993 Crust. Scolopendra &c &c

7/12966

Decapoda: Bresiliidae

Bresilia sp.

Myriapod jar/12967

Chilopoda: 7Scolopendromorpha

Remarks: condition poor.

Myriapod jar/12968

Chilopoda

Remarks: condition very poor.

997 Crab. Brachy: both species tinged with dark crimson red [Kelp roots.]

Dry 6-7/14535-6

Decapoda: Xanthidae

Gaudichaudia gaudichaudii (H. Milne Edwards)
 Remarks: bearing a label inscribed "Xa. Gaudichaudii?
 Chile? Darwin 997".

999 Crust. Kelp roots

7/12969

Decapoda: Alpheidae

Betaeus truncatus Dana

7/12970-1

Decapoda: Caridea

Remarks: condition very poor.

1000.1001 Squilla: often caught when fishing with nets here; given me.

Dry 102/14537

Stomatopoda: Squillidae

Pterygosquilla armata (H. Milne Edwards)

1005 Small Crust: at sea off Valparaiso, taken chiefly 3 or 4 feet beneath surface.
 [day time inserted]. [some minute ones are curious]

2/11958

Mysidacea: Mysida

8/12974

Decapoda: Caridea

Remarks: condition poor.

8/12972-3

Amphipoda: Gammaridea

Remarks: condition poor.

Annelid jar/12975

Polychaeta: Nereidae

Remarks: condition poor.

2/11953

Copepoda

Branchiopoda

Conchostraca

Remarks: not identified.

Valparaiso

1027 Vaginulus V. 272 [see also 1180]

1028 Crust: adhering in numbers on under side of *Asterias* (1031)

1/9904

Isopoda: Idoteidae

Edotea magellanica Cunningham

Remarks: the association with *Asterias* may be fortuitous.

1834 Aug: Valparaiso

1029 Crab, above dark "Cochi. R" legs "Hyacinth & tile R" front pincers purplish.

Dry 107/14538
 Decapoda: Grapsidae
Grapsus grapsus (Linnaeus)

1030 Crab, whole body mottled with "Carm. & purplish R"

94/14539
 Decapoda: Cancridae
Cancer polyodon Poëppig

1057 Fresh-water Crust. —Mac. —[Mentioned by Molina as the builder. The mud which it brings up in making its burrows is placed so as to form a circular wall several inches high round the edge of mouth of burrow. —Burrow in marshy field generally near a brook.]

Dry 56-73/14540-57
 Decapoda: Aeglididae
Aegla laevis talcahuano Schmitt

Remarks: this material includes both Darwin and Hugh Cuming specimens and it has not been possible to attribute specimens to the relevant collectors. The specimens are all associated with the Catalogue number 1103 (q.v.).

1058 2 Scorpions. Gonlipla. Scolopendra Julius. under stones. Mountains [the largest Julius emits much yellow fluid with very pungent smell like mustard.—]

Myriapod jar/12976
 Chilopoda: Geophilomorpha
 Myriapod jar/12977
 Diplopoda: ?Spirostreptidae
 Remarks: fragmentary.

1834 Nov. & Dec. Archip: of Chiloe

1078 Crab

Dry 93/14558
 Decapoda: Cancridae
Cancer plebejus Poëppig

Remarks: the specimen has a brown paper label inscribed in Covington's handwriting "1078 Spirits".

1084 Crabs in the greatest numbers under stones.

Dry 48/14559
 Decapoda: Porcellanidae
Petrolisthes tuberculatus (Guérin-Méneville)
 Remarks: labelled "P. striata Mr Darwin" and on reverse "1084".

Dry 50-1/14560-1
 Decapoda: Porcellanidae
Petrolisthes tuberculatus (Guérin-Méneville)
 Remarks: labelled "P. sulcatus n.sp. Darwin" and on reverse "1084".

1093 Onisci. F. Water Leaches &c &c

8/12982
 ? Copepoda
 Remarks: only a fragment extant.

Arachnid jar/12978

Arachnida: Araneae

Remarks: legs detached.

Annelida jar/12981

Annelida: Hirudinea

Myriapod jar/12979

Chilopoda: ?Scolopendromorpha

Remarks: fragmenting.

Myriapod jar/12980

Diplopoda: Chilognatha

Remarks: badly broken.

1098 Crust: amphipod; burrows & feeds in the leaves of a *Fucus* [Growing like the *Durvilleae utilis* Dic. Class.—Plates.]

8/12983

Amphipoda: ?Dexaminidae

Remarks: very small.

1101 Lumbricus. Oniscus Scolopendra. C Tres Montes

Arachnid jar/12985

Arachnida: Araneae

Arachnid jar/12986

Arachnida: Araneae

Remarks: some legs missing.

Annelid jar/12984

Annelida: Oligochaeta

1105 Crabs. F. Water stream [C. Tres Montes] [see under 1057]

2/11835

Amphipoda: Gammaridae

Melita sp.

1/9860

Isopoda: Sphaeromidae

Exosphaeroma ? lanceolata (White)

1/9855

Decapoda: Hippolytidae

Nauticaris magellanica (A. Milne Edwards)

1/9880

Decapoda: Paguridae

Pagurus edwardsi (Dana)

1104 Crust. pelagic colourless C. Tres Montes [Caught in day time in harbour several yards beneath the surface]

1/9879

Copepoda: Calanoida

Remarks: condition very poor. In Darwin's field pocket-book (see Barlow, 1945:229) there is the following entry dated 27th November 1834: "Small crustacea, purple clouds of infinite numbers pursued by flocks of Famine Petrels" (see also Darwin, 1839:355).

1109 Crustacea pelagic; nighttime; [13 fathoms at C. Tres Montes]

1/9851

Mysidacea: Mysida

3/12055

Decapoda: Hippidae

Emerita lanaloga (Stimpson)

Remarks: the number assigned is uncertain. The specimen was marked "177" probably indicating its Bell Catalogue number. Number 177 in that Catalogue gives "Isopoda" and "Darwin 1109".

1/9876

Isopoda: Cirolanidae

Excirrolana ? chilensis Richardson

Remarks: condition poor.

1110 Crabs: The Amphipoda red coloured under putrid kelp.—

1/9847

Amphipoda: Gammaridea

Remarks: condition very poor.

1834 Decemb. Isd. of Inchin. North Part of Tres Montes

1114 Crustacea (littoral)

8/12991

Amphipoda: Gammaridea

Remarks: condition poor.

8/12988

Decapoda: Majidae

Pelca ? pacifica A. Milne Edwards

8/12989

Decapoda: Hymenosomatidae

Halicarcinus planatus (Fabricius)

8/12990

Isopoda: Sphaeromidae

Amphoroidea typa H. Milne Edwards

8/12987

Decapoda: Porcellanidae

Allopetrolisthes ? angulosus (Guérin-Méneville)

1124 Crustacea, by night: pelagic in harbour several feet beneath surface. [caught in middle of cove]

2/11942

Decapoda: Alpheidae

Synalpheus spinifrons (H. Milne Edwards)

1127 Crust. Mac: caught in middle of cove, beneath surface, at night, must [be excessively numerous, because both great herds of seal & Tern appear to live on them; Above light purplish black, mouth, joints, rings of abdomen & all thin places, fine purplish red.—Anna Pinks (?) Harbor. Jan 4th.—]

- Dry 74-5/14562-3
 Decapoda: Galatheididae
Munida gregaria (Fabricius)
 Remarks: specimen 74 has the chelipeds present but detached. The specimens are labelled "Gr. gregaria Chili? Darwin" and on the reverse "1127". Gr = (Grimothoe) was the name once given to the late larval stage of *Munida gregaria*.
- Dry 80-1/14564-5
 Decapoda: Diogenidae
Clibanarius ? panamensis Stimpson
 8/12992
 Cirripedia: Thoracica
 Remarks: badly damaged.
- 1835 Jany. Chiloe
- 1152 Crab. above uniform dull red.
 Dry 92/14566
 Decapoda: Cancridae
Cancer plebejus Poeppig
- 1155 Balanus. buried in a [stick?] [& a Crust Macrouri *deleted*] [see 1499]
- 1164 Amphipoda: Crust: feeding on dead crab on sand beach at Cacao-Chiloe
 8/12993
 Amphipoda: Talitridae
 ?*Talorchestia* sp.
- 1166 Hermit Crab: Chonos Archipel.
 5/11893
 Decapoda: Paguridae
Pagurus ? perlatus H. Milne Edwards
- 1835 Feb. Valdivia
- 1180 Vaginulus V. 272(a)
 Remarks: this entry is an anomaly because there is no reference to Crustacea.
 Dry 23/14567
 Decapoda: Grapsidae
Hemigrapsus crenulatus (H. Milne Edwards)
 Remarks: unnumbered but associated with label inscribed by Darwin "Valdivia".
 3/12444
 Decapoda: Porcellanidae
Petrolisthes edwardsii (Saussure)
- 1195 Crab-Coquimbo
 Dry 52/14568
 Decapoda: Porcellanidae
Petrolisthes desmarestii (Guérin-Méneville)
 Remarks: specimen inscribed "P. Darwinii Mr Darwin" and on the reverse "1195".

1203 Squilla Coquimbo
 Separate jar/12440
 Stomatopoda: Squillidae
Pseudosquillaopsis ? lessoni (Guérin-Méneville)

1835 Coquimbo

1209: 210 Crabs
 Dry 22/14569
 Decapoda: Grapsidae
Hemigrapsus crenulatus (H. Milne Edwards)

1212 Scolopendra: *Julus*
 Myriapod jar/12994
 Chilopoda: Scolopendromorpha
 Remarks: fragile.

1214 Scolopendra. *Julus* Valparaíso
 Arachnid jar/12995
 Arachnida: Scorpiones
 Myriapod jar/12996
 Chilopoda: Scolopendromorpha
 Myriapod jar/12997
 Diplopoda: ?Spirostreptidae
 Remarks: fragmented.

1223 1224 Crabs. [Coquimbo]
 Dry 106/14570
 Decapoda: Pseudothelphusidae
Pseudothelphusa sp.

The following specimens are not numbered but are almost certainly from Peru

Dry 21/14571
 Decapoda: Pinnotheridae
Pinnotherella laevigata H. Milne Edwards & Lucas
 Remarks: this rather poorly preserved specimen is associated with a label inscribed by Darwin "Lima". It could therefore belong to any of the samples from Peru known to have contained crustaceans (possible numbers are 1247, 49, 50, 56, 57, 1262). The specimen has been mistakenly placed next to specimens labelled *Trapezia*.

Dry 9-10/14572-3
 Decapoda: Xanthidae
Pilumnoides perlatus (Poeppig)
 Remarks: labelled "Pi: perlatus Peru? Darwin".

1835 July. Lima. S. Lorenzo

1247 Crab, above purple, legs speckled.
 Dry 95/14574
 Decapoda: Cancridae
Cancer plebejus Poepig
 Remarks: bears a brown label numbered "1247" in Covington's hand.

1249 Crab. white, back with purple punctures & legs marked with paler do.

Dry 97/14575

Decapoda: Portunidae

Ovalipes punctatus (de Haan)

Remarks: bears an attached broken metal tag which reads “. . . 49” and which we presume to have been originally 1249.

1250 Crab. beautifully marked with dark Lilac purple. in regular forms, colour brighter on legs. [Crab. very common, when taken draws all its legs close to its body & shams death.—]

Dry 109/14576

Decapoda: Calappidae

Hepatus chilensis H. Milne Edwards

Remarks: an attached brown paper label is inscribed “1250 Spirits” in Covington’s hand.

1835 August Lima—

1256 Crabs. Coquimbo Mr. King.

Dry 53–5/14577–9

Decapoda: Porcellanidae

Allopetrolisthes angulosus (Guérin-Méneville)

Remarks: labelled “P. unidentata n.s Mr. Darwin”.

Dry 15/14580

Decapoda: Majidae

Microphrys sp.

1259 Crab. Mac. [Coquimbo]

2/11836

Decapoda: Alpheidae

Remarks: some legs missing.

2/9859

Decapoda: Bresiliidae

?*Bresilia* sp.

Remarks: slightly damaged.

1262 Decapod Notapod [Callao]

Dry 49/14581

Decapoda: Porcellanidae

Petrolisthes sp.

Remarks: labelled “P. elongata. Darwin”.

1835 Septemb. Galapagos. Chatham Isd.

1269 Fish. See (1270)

1270 Crust Parasit on Fish (1269)

2/11950

Copepoda: ?Siphonostomata

Remarks: in fair condition. Jenyns (1840–42) remarked that all Darwin’s fishes reached England intact and that each had a numbered tin label attached. Specimen 1269 was described by Jenyns as *Cossyphus darwini* (now *Pimelometopon darwini*)

(Jenyns) and is in the British Museum (Natural History); accession number 1918.1.31.11.

Dry 79/14582

Decapoda: Palaemonidae

Remarks: fragmentary, not numbered but labelled "Galapagos" in Darwin's handwriting. Possible Galapagos numbers for crustaceans are 1277-8.85. 90-1, 1316.

1835 Sept. Galapagos.—Charles Isd.

1298 Scolopendra. dark reddish brown grow to 14 inches long.—

Separate jar/12998

Myriapoda: Scolopendromorpha

Scolopendra galapagoensis Bollman

Remarks: it is interesting to note that this specimen was collected more than 50 years prior to the description of the species by Bollman in 1889; the holotype locality is Chatham Island (United States National Museum number 594).

1835 Otahiti

1332 Fresh water. Prawns

Separate jar/12442

Decapoda: Palaemonidae

Macrobrachium sp.

1333 Fresh water shrimp & one marine.

1/9890

Decapoda: ?Palaemonidae

Remarks: specimen damaged, the number appears to be incomplete (e.g. "13. .") and could refer to either Tahiti or New Zealand.

December Bay of Isds.—New Zealand

1346 Crabs—tidal rocks

Dry 47/14584

Decapoda: Porcellanidae

Petrolisthes elongatus (H. Milne Edwards)

Remarks: labelled "P. violacea Darwin 1346".

Dry 45/14583

Decapoda: Xanthidae

Daira perlata Herbst

Remarks: unnumbered and has two labels, one inscribed by Darwin "New Zealand" and the other "Mr C. Darwin" by ?Bell: it is doubtful whether this specimen is from New Zealand.

Dry 41/14585

Decapoda: Grapsidae

Paragrapsus galmardii (H. Milne Edwards)

Remarks: not numbered (see below).

Dry 91/14586

Pycnogonida

Remarks: this and the previous specimen are unnumbered but both bear labels

inscribed by Darwin "Hobart Town". There are no crustaceans recorded from this locality in the "Catalogue".

April Keeling Islands

1403 Crabs; the Decapod is nearly white runs like lightning, with erected eyes on the white sand beaches: Hermit crab, coloured bright scarlet frequent a particular univalve. & swarms on the coast & in all parts of the dry land far from water: Another Hermit Crab is likewise found inland [its front legs form a most perfect operculum to its shell.—]

Remarks: there is no hermit crab in the collection from Keeling, which is to be regretted in view of the above observations and comments in the "Personal Diary" for April 2nd (Barlow, 1933; see also Darwin, 1839: 544).

Dry 40/14587

Decapoda: Ocypodidae

Uca (Plamuca) sp.

Remarks: unnumbered female but labelled "Keeling Isd" by Darwin.

Dry 38/14588

Decapoda: Xanthidae

? *Actaea* sp.

Remarks: unnumbered but labelled "Keeling Isd" by Darwin.

Dry 35/14589

Decapoda: Ocypodidae

Austruca lactea (de Haan)

Remarks: unnumbered but may be from Keeling or Tahiti.

8/12999

Decapoda: Ocypodidae

Ocypode ceratophthalma (Pallas)

1836 April. Keeling Isds.

1418 Various crabs. beneath stones.

5/13001

Decapoda: Portunidae

Thalamita admete (Herbst)

8/13000

Decapoda: Alpheidae

Synalpheus sp.

5/13003

Decapoda: Caridea

Remarks: condition very poor.

5/13004

Amphipoda and ?Caridea

Remarks: condition very poor.

5/13002

Decapoda: Porcellanidae

Petrolisthes ? nobilii Haig

1428 Crab. V.362

Remarks: unfortunately this famous species *Birgus latro* (Linnaeus) appears not to be represented in the Oxford *Beagle* collections, but we feel its importance merits its inclusion in the present list. An account of this species is given in the "Personal Diary" (Barlow, 1933) and in Darwin (1839).

1835 May. Mauritius.—

1450 Crab

Dry 98/14590

Decapoda: Xanthidae

Zoerymus aeneus (Linnaeus)

Remarks: bearing a brown paper label inscribed "1450 Spirits" in Covington's hand.

June Cape of Good Hope.

1460 Fresh Water Crust. Amphipoda.

3/11974

Amphipoda: Gammaridae

?*Melita* sp.

Decemb 1836

Remarks: the following entries are all in pencil and, according to the date, must have been made after the *Beagle* reached England (see Herbert, 1974: 239).

1477 (91) Crust. St Jago

5/13006

Stomatopoda: Gonodactylidae

?*Gonodactylus* sp.

Remarks: condition poor.

5/13005

Decapoda: Xanthidae

Micropanope sp.

Remarks: condition poor.

1489 number lost. Crust. Falkland Islds.?? [East S. America *inserted*].

Arachnid jar/9862

Pycnogonida: Pycnogonidae

?*Pycnogonum* sp.

1498 Crab. Keeling Isd (?)

5/13007

Decapoda: Coenobitidae

Coenobita rugosa H. Milne Edwards

1499 (1155). Crab.—Chiloe.—

Dry 76—7/14491—2

Decapoda: Galatheidæ

Munida subrugosa (White)

Remarks: these specimens are labelled "M. Darwinii Chile ? Darwin" and on the reverse side "1499". Bell (1847: 196) referred to "a new species obtained by Mr Darwin and through his kindness, is in my possession" and, on page 207 of the same publication, to the "existence of a new and elegant" species which I find among the fine collection of Crustacea procured by my friend Mr. Darwin".

1500 Crust. Brachyuri. Mauritius Dr Page

Dry 11—13/14593—5

Decapoda: Xanthidae

Leptodius sanguineus (H. Milne Edwards)

Remarks: associated with the label inscribed "Chl: Darwin 1500". The species was originally referred to the genus *Chlorodius*. Dr Page has not been identified.

1502 Crust. Brachyuri. Mauritius Dr Page

Dry 25/14596

Decapoda: Grapsidae

Sarmatium sp.

1503 Crust. Brachyuri. Mauritius Dr Page

Dry 14/14597

Decapoda: Majidae

?*Microphrys* sp.

Remarks: listed as "probably *Mithrax*" in Bell's MS catalogue.

1504 Crust. Brachyuri. Mauritius Dr Page

Dry 36/14598

Decapoda: Ocypodidae

Uca (*Thalassuca*) ?*vocans* (Linnaeus)

Remarks: labelled "G. vocans Darwin 1504" and is listed in Bell's MS catalogue as "Gelasimus vocans".

Dry 37/14599

Decapoda: Ocypodidae

Austruca lactea annulipes (A. Milne Edwards)

Remarks: unnumbered but next to Dry 36.

Dry 33/4/14600—1

Decapoda: Hymenosomatidae

Halicarcinus planatus (Fabricius)

Remarks: labelled "H. Darwinii (n.s.) Falkland Is. Darwin 1504". This is an error since the number refers to Mauritius.

2/11927

Decapoda: various families as listed below

Xanthidae

Liomera rugata (H. Milne Edwards)

Trapezia ferruginea Latreille

Chlorodiella niger (Forsskål)

Atergatopsis ? *signata* (Adams & White)

Goneplacidae

Carcinoplax sp.

Galatheaidae

Galathea sp.

Majidae and Xanthidae undetermined.

1507 Hermit Crabs [Mauritius]

Dry 17—20/14602—5

Decapoda: Xanthidae

Trapezia digitalis Latreille

Remarks: labelled "Tr. Darwin 1507".

Separate jar/12443

Anomura: Coenobitidae

Coenobita rugosa H. Milne Edwards

1544

Dry 8/14606

Decapoda: Xanthidae

Eurypanopeus transversus (Stimpson)

Remarks: labelled "Xantho laevis n.s. Darwin 1544".

1616

Separate jar/12441

Decapoda: Palaemonidae

Macrobrachium sp.

Remarks: these last two mentioned entries must have received numbers subsequent to the return of the *Beagle* but were not entered in the "Catalogue"; the last number recorded in this is 1529.

ACKNOWLEDGEMENTS

We are especially grateful to Mr Jimmy Hull whose impeccable curation of the Darwin spirit specimens has helped considerably towards the preparation of this paper. We also thank Dr Tom Kemp, Curator of the Zoological Collections, for giving us every facility for the study of this material and for his continual encouragement.

Thanks are also due to Mrs A. Smith of the Hope Department Library for making available the Bell archival documents and to Mr Peter Gautrey of Cambridge University Library for allowing us access to the Darwin archival material, for which he cares so expertly.

The Royal College of Surgeons of England have graciously permitted the published extracts from the Catalogue contained in the Darwiniana at Down House and we will forever remember the rainy winter afternoons spent studying this, and the particular kindness of Mr Philip Titheradge, the Custodian.

We also thank Miss Monica Price, Assistant Curator of the Mineralogical Collections at the Oxford University Museum, who drew our attention to Gunther's (1925) reference to Darwin material in the Daubeny collection, and we thank Mr Ivor Lansbury of the Entomological Collections who showed us some of the Darwin insects in his care.

REFERENCES

- ABELLE, L. G., 1972 The status of *Sesarma angustipes* Dana, 1952. *S. inspecium* Dana, 1852 and *S. miersi* Rathbun, 1897 (Crustacea: Decapoda: Grapsidae) in the western Atlantic. *Caribbean Journal of Science* 12: 165-170.
- BARLOW, N. (Ed.), 1933 *Charles Darwin's Diary of the Voyage of H.M.S. Beagle*. Cambridge: Cambridge University Press.
- BARLOW, N. (Ed.), 1945 *Charles Darwin and the Voyage of the Beagle*. London: Pilot Press.
- BARLOW, N. (Ed.), 1965 Darwin's Ornithological Notes. *Bulletin of the British Museum (Natural History. Historical Series* 2: 201-278.
- BARNARD, K. H., 1950 Descriptive catalogue of South African decapod Crustacea. *Annals of the South African Museum* 38: 1-837.
- BELL, T., 1842-43 *Reptiles*. In Darwin, C. *The Zoology of the voyage of H.M.S. Beagle, under the command of Capt. Fitzroy, R.N. during the years 1832 to 1836*. . . Pt. V. i-vi, 51 pp. London: Smith, Elder & Co.
- BELL, T., 1847 *A History of British Crustacea* Pt. V: 193-240. London: John van Voorst.
- BOLLMAN, C. H., 1889 Myriapoda. In *Scientific results of explorations by the U.S. Fish Commission Steamer Albatross. Proceedings of the United States National Museum* 12: 211-216.
- BOTT, R., 1969 Die Süswasserkrebbe Süd-Amerikas und ihre Stammesgeschichte. *Abhandlungen herg. von der Senckenbergischen Naturforschenden Gesellschaft* 518: 1-94.
- BOTT, R., 1973 Die verwandtschaftlichen Beziehungen der Uca-Arten. *Senckenbergiana Biologica* 54: 315-325.
- BOUSFIELD, E. L., 1982 The amphipod superfamily Talitroidea in the Northeastern Pacific region. I. Family Talitridae: Systematics and distributional ecology. *Publications in Biological Oceanography*. No. 11. National Museum of Canada, Ottawa i-vii, 73 pp.
- BURKHARDT, F. & SMITH, S., (Eds) 1985. *The Correspondence of Charles Darwin. 1821-1836*. Volume 1. Cambridge: Cambridge University Press.
- CAMPBELL, B. M. & GRIFFIN, D. J. G., 1966 The Australian Sesarminae (Crustacea: Brachyura): Genera *Helice*, *Helograpsus*, nov., *Cyclograpsus*, and *Paragrapsus*. *Memoirs of the Queensland Museum* 14: 127-174.
- CHACE, F. A., 1956 *Porcellanid Crabs*. In: *Résultats Scientifiques. Expédition Océanographique Belge dans les Eaux Côtières Africaines de l'Atlantique Sud (1948-1949)*. Bruxelles III 5: 1-54.
- CHACE, F. A., 1968 A new crab of the genus *Cycloes* (Crustacea: Brachyura: Calappidae) from St. Helena, South Atlantic Ocean. *Proceedings of the Biological Society of Washington* 81: 605-612.
- CRANE, J., 1975 *Fiddler crabs of the world (Ocypodidae: Genus Uca)*. Princeton: Princeton University Press.
- DARWIN, C., 1839 *Journal of Researches into the Geology and Natural History of the various countries visited by H.M.S. Beagle etc*. London: Henry Colburn.
- DAVIES, K. C. & HULL, J., 1976 *The Zoological Collections of the Oxford University Museum*. Oxford: Oxford University Press.
- DIMAURO, A. A. Jr., 1982 Rediscovery of Professor Thomas Bell's type Crustacea (Brachyura) in the dry crustacean collection of the Zoological Collections, University Museum, Oxford. *Zoological Journal of the Linnean Society of London* 76: 155-182.
- FIZE A. & SERENE, R. 1955 Les Pagures du Vietnam. *Notes. Institut Océanographique Nha Trang*. 45: 1-228.
- FOREST, A. & SAINT LAURENT, M. de., 1967 Crustacés Decapodes: Pagurides. In: *Résultats Scientifiques des Campagnes de la "Calypso" au large des côtes Atlantiques de l'Amérique du Sud (1961-1962)* VIII 6. *Annales de l'Institut Océanographique* 45: 47-170.
- GARTH, J. S., 1946 Littoral brachyuran fauna of the Galapagos Archipelago. *Allyn Hancock Pacific Expeditions* 5 (10): 341-401.
- GARTH, J. S., 1958 Brachyura of the Pacific Coast of America, Oxyrhyncha. *Allyn Hancock Pacific Expeditions* 21 (1): 1-499.
- GUNTHER, R. T., 1904 *A History of the Dabney Laboratory Magdalen College Oxford*. London: Henry Frowde.

- GUNTHER, R. T., 1925 *Early Science in Oxford*. Vol. III. Oxford: Oxford University Press.
- HAIG, J., 1955 Reports of the Lund University Chile Expedition 1948-1949. 20. The Crustacea Anomura of Chile. *Acta Universitatis Lundensis* 51 (12): 1-68.
- HAIG, J., 1960 The Porcellanidae (Crustacea, Anomura) of the Eastern Pacific. *Allen Hancock Pacific Expeditions* 24: 1-440.
- HAIG, J., 1964 Porcellanid Crabs from the Indo-West Pacific, Part 1. in: Papers from Dr. Th. Mortensen's Pacific Expedition 1914-1916. 81. *Videnskabelige Meddelelser fra Dansk Naturhistorisk Forening / Kjøbenhavn* 126: 355-386.
- HERBERT, S., 1974 The place of Man in the development of Darwin's theory of transmutation, Part I. To July 1837. *Journal of the History of Biology* 7: 217-258.
- HOLTHUIS, L. B., 1952 Reports of the Lund University Chile Expedition 1948-1949. 5. The Crustacea Decapoda Macrura of Chile. *Acta Universitatis Lundensis* 47 (10): 1-110.
- HOLTHUIS, L. B., 1954 On a collection of decapod Crustacea from the Republic of El Salvador (Central America). *Zoologische Verhandlungen*. 23: 1-43.
- JENYNS, L., 1840-1842 Fish. In Darwin, C. *The Zoology of the voyage of H.M.S. Beagle, under the command of Capt. Fitzroy, R.N. during the years 1832 to 1836*. . . Pt. IV. i-xv, 172 pp. London: Smith Elder & Co.
- LUCAS, J. S., 1980 Spider Crabs of the family Hymenosomatidae (Crustacea; Brachyura) with particular reference to Australian species: Systematics and Biology. *Records of the Australian Museum* 33: 148-247.
- MANNING, R. B., 1969 Stomatopod Crustacea of the Western Atlantic. *Studies in Tropical Oceanography* 8: 1-380.
- MANNING, R. B., 1971 Eastern Pacific Expeditions of the New York Zoological Society. Stomatopod Crustacea. *Zoologica* 56: 15-113.
- MANNING, R. B. & HOLTHUIS, L. B., 1981 West African Brachyuran Crabs. *Smithsonian Contributions to Zoology* 306: i-xii, 1-379.
- MEINZIES, R. J., 1961 Reports of the Lund University Chile Expedition 1948-1949. 42. The zoogeography, ecology and systematics of the Chilean marine isopods. *Acta Universitatis Lundensis*. 57 (11): 1-162.
- NAME, W. G. van, 1936 The American land and freshwater isopod Crustacea. *Bulletin of the American Museum of Natural History* 71: 1-535.
- PORTER, D. M., 1985 The Beagle collector and his collections. In: Kohn, D. S. (Ed.), *The Darwinian Heritage: A Centennial Retrospect*. Princeton University Press: Wellington, New Zealand, Nova Pacific.
- POULTON, E. B., 1909 *Charles Darwin and the Origin of Species*. London: Longmans, Green & Co.
- PRETZMANN, G., 1972 Die Pseudothelphusidae (Crustacea, Brachyura). *Zoologica* 42: 1-180.
- RATHBUN, M. J., 1911 The stalk-eyed Crustacea of Peru and the adjacent coast. *Proceedings of the United States National Museum* 38: 531-620.
- RATHBUN, M. J., 1918 The grapsoid crabs of America. *Bulletin of the United States National Museum* 97: i-xvii, 1-461.
- RATHBUN, M. J., 1925 The spider crabs of America. *Bulletin of the United States National Museum* 129: i-xx, 1-598.
- RATHBUN, M. J., 1930 The cancroid crabs of America. *Bulletin of the United States National Museum* 152: i-xvi, 1-609.
- RATHBUN, M. J., 1937 The oxysomatous and allied crabs of America. *Bulletin of the United States National Museum* 166: i-vi, 1-278.
- SAKAI, T., 1976 *Crabs of Japan and the Adjacent Seas*. Tokyo: Kodansha Ltd.
- SCHMITT, W. L., 1942 The species of Aegla, endemic South American fresh water crustaceans. *Proceedings of the United States National Museum* 91: 431-520.
- SMITH, K. V. G., (ed.) 1987 Darwin's Insects. Charles Darwin's entomological notes. *Bulletin of the British Museum (Natural History)*. Historical series 14: 1-141.
- STEBBING, T. R. R., 1914 Crustaceans from the Falkland Islands collected by Mr Rupert Vallentin F.L.S. Part II. *Proceedings of the Linnean Society of London* (1914): 341-378.
- STEPHENSON, W. & HUDSON, J. J., 1957 The Australian Portunids (Crustacea: Portunidae). *Australian Journal of Marine & Freshwater Research* 8: 312-368.

Index of identifications

<i>Actaea</i> sp.	1403	<i>comptus</i> , <i>Pagurus</i>	510, 603,
<i>admete</i> , <i>Thalamita</i>	1418		917
<i>aenaeus</i> , <i>Zoerymus</i>	1450	Conchostraca (undet.)	1005
<i>albatrossis</i> , <i>Acanthocyclus</i>	864	Copepoda (undet.)	1005, 1093
Alpheidae (undet.)	1259	<i>coryphe</i> , <i>Mithrax</i>	145
<i>altimanus</i> , <i>Cyrtograpsus</i>	414	<i>crenulatus</i> , <i>Hemigrapsus</i>	1180, 1209
Amphipoda (undet.)	1418	<i>cristatus</i> <i>pagel</i> ,	
Amphinomidae	822	<i>Dilocarcinus</i>	737
<i>Ampithoe</i> sp.	980	<i>darwini</i> , <i>Pimelometopon</i>	1270
<i>analoga</i> , <i>Emerita</i>	1109	Decapoda (larvac)	850
<i>angulatus</i> , <i>Cyrtograpsus</i>	436	<i>depressa</i> , <i>Plagusia</i>	326
<i>angulosus</i> , <i>Allopetrolisthes</i>	1114, 1256	<i>desmarestii</i> , <i>Petrolisthes</i>	1195
<i>angustipes</i> , <i>Sesarma</i>	144	Dexaminidae (undet.)	1098
<i>annulipes lactea</i> , <i>Austruca</i>	1504	<i>Diastylis</i> sp.	801
<i>antillensis</i> , <i>Dromidea</i>	172	<i>digitalis</i> , <i>Trapezia</i>	1507
Aoridae	448	<i>Dryopoides</i> sp.	507
Araneae (undet.)	1093, 1101	<i>Dynamenella</i> sp.	507
<i>armata</i> , <i>Pterygosquilla</i>	1000	<i>eatoni</i> , <i>Dynamenella</i>	841, 868,
<i>bairdii</i> , <i>Cycloes</i>	59		980
<i>Bopyrus</i> sp.	351	<i>Edotea</i> sp.	800
<i>Bovallia</i> sp.	810	<i>edwardsi</i> , <i>Pagurus</i>	1103
Branchiopoda (undet.)	1005	<i>edwardsii</i> , <i>Petrolisthes</i>	1180
<i>brasiliamus</i> , <i>Percophis</i>	347	<i>elongatus</i> , <i>Petrolisthes</i>	1346
<i>Bresilia</i> sp.	993, 1259	<i>emarginata</i> , <i>Cassidinopsis</i>	507, 556
<i>brevipes</i> , <i>Ampithoe</i>	603	<i>Ethusa</i> sp.	172
Calanoida (undet.)	850, 1104	<i>Exosphaeroma</i> sp.	800
<i>calcareo</i> , <i>Isocladus</i>	589, 622,	<i>ferruginea</i> , <i>Trapezia</i>	1504
	851	<i>fuegiensis</i> , <i>Lembos</i>	841, 868,
<i>Caprella</i> sp.	753		917
Caprellidae	448, 810	<i>galmardii</i> , <i>Paragrapsus</i>	1346
<i>Carcinoplax</i> sp.	1504	<i>galapagoensis</i> , <i>Scolopendra</i>	1298
Caridea (undet.)	603, 851,	<i>Galathea</i> sp.	1504
	999, 1005,	Gammaridea (undet.)	103, 491,
	1418		507, 611,
<i>ceratophthalmus</i> , <i>Ocypode</i>	1403		801, 842,
<i>cessacii</i> , <i>Petrolisthes</i>	12		851, 1005,
<i>chilensis</i> , <i>Excirologana</i>	1109		1110, 1114
<i>chilensis</i> , <i>Hepatus</i>	1250	<i>gaudichaudii</i> ,	
<i>chilensis</i> , <i>Transorchestia</i>	868	<i>Gaudichaudia</i>	997
Chilognatha (undet.)	617, 667,	Geophilomorpha (undet.)	1058
	1093	<i>gigas</i> , <i>Exosphaeroma</i>	551
Chilopoda (undet.)	993	<i>Gonodactylus</i> sp.	1477
<i>Cirolana</i> sp.	802	<i>granulosa</i> , <i>Paralomis</i>	814
<i>Clibanarius</i> sp.	12		

<i>grapsus</i> , <i>Grapsus</i>	1029	<i>panamensis</i> , <i>Clibanarius</i>	1127
<i>gregaria</i> , <i>Munida</i>	839, 1127	Paramphithoidae (undet.)	556
		<i>Parathemisto</i> sp.	834, 839, 841
<i>helleri</i> , <i>Epixanthus</i>	12	<i>perlata</i> , <i>Daira</i>	1346
<i>Herbstia</i> sp.	12	<i>perlatus</i> , <i>Pagurus</i>	1166
Hirudinea (undet.)	1093	<i>perlatus</i> , <i>Pilumnoides</i>	p. 220
Hyperiidæ (undet.)	841	<i>Petrolisthes</i> sp.	351, 1262
<i>Idotea</i> sp.	40	<i>planatus</i> , <i>Halicarcinus</i>	786, 851, 867, 917, 1114, 1504
Idoteidae (undet.)	448		
<i>Isocladus</i> sp.	786	<i>piebejus</i> , <i>Cancer</i>	1078, 1152, 1247
<i>Kuria</i> sp.	507		
<i>lactea</i> , <i>Austruca</i>	1403	Polydesmidea	475
<i>laevigata</i> , <i>Pinnotherella</i>	p. 220	<i>polyodon</i> , <i>Cancer</i>	1030
<i>lanceolata</i> , <i>Exosphaeroma</i>	507, 560, 603, 1103	<i>Pontogeneia</i> sp.	589
		<i>Pseudothelphusa</i> sp.	1223
<i>latreillei</i> , <i>Eurypodius</i>	815, 830, 903	<i>punctatus</i> <i>Ovalipes</i>	222, 1249
<i>latro</i> , <i>Birgus</i>	1428	Pycnogonida (undet.)	786, 1346
<i>lessoni</i> , <i>Pseudosquillaopsis</i>	1203	<i>Pycnogonum</i> sp.	851, 1489
<i>Macrobrachium</i> sp.	1332, 1616	<i>regis</i> , <i>Bovallia</i>	560, 917, 980
<i>magellanica</i> , <i>Edotea</i>	1028	<i>rugata</i> , <i>Liomera</i>	1504
<i>magellanica</i> , <i>Nauticaris</i>	860, 1103	<i>rugosa</i> , <i>Coenobita</i>	1498, 1507
Majidae (undet.)	1504	<i>sanguineus</i> , <i>Leptodius</i>	1500
<i>Megamphopus</i> sp.	448	<i>Sarmatium</i> sp.	1502
<i>Melita</i> sp.	1103, 1460	Scolopendromorpha	617, 622,
<i>metallica</i> , <i>Idotea</i>	448	(undet.)	993, 1093,
<i>Micropanope</i> sp.	1477		1212, 1214
<i>Microphrys</i> sp.	1256, 1503	Scorpiones (undet.)	1214
<i>Mithrax</i> sp.	867	<i>signata</i> , <i>Atergatopsis</i>	1504
<i>Munida</i> sp.	850	Siphonostoma (undet.)	1270
Mysida (undet.)	491, 834, 1005, 1109	<i>spinifrons</i> , <i>Synalpheus</i>	1124
		<i>spinulosum</i> , <i>Peltarion</i>	601
Mysidacea (undet.)	850	Spirostreptidae (undet.)	206, 1058, 1214
Nereidae	1005		
<i>niger</i> , <i>Chlorodiella</i>	1504	Stomatopoda (pseudozoea)	850
<i>nobilii</i> , <i>Petrolisthes</i>	1418	<i>stuederi</i> , <i>Exosphaeroma</i>	560, 980
<i>nodosus</i> , <i>Mithrax</i>	407	<i>subrugosa</i> , <i>Munida</i>	551, 820, 1499
<i>Nymphon</i> sp.	842	<i>Synalpheus</i> sp.	1418
Oligochaeta (undet.)	1101	<i>talcahuano laevis</i> , <i>Aegla</i>	1057
<i>ovata</i> , <i>Micropisa</i>	12	<i>Talorchestia</i> sp.	1164
<i>pacifica</i> , <i>Pella</i>	1114	Tanaidacea (undet.)	589
<i>Palaemon</i> sp.	867	Thoracica (undet.)	1127
Palaemonidae (undet.)	1270, 1333	<i>transversus</i> , <i>Eurypanopeus</i>	1544

<i>truncatus, Betaeus</i>	999	<i>Vaginula</i> sp.	1180
<i>tuberculatus, Petrolisthes</i>	1084	Valvifera (undet.)	145
<i>typa, Amphoroidea</i>	507, 1114	vocans, <i>Uca</i>	1504
<i>Uca</i> sp.	1403	Xanthidae (undet.)	145, 1504
<i>urostylis, Cirolana</i>	351		